

MAGIC



CONSTRUCTION Hand Woven

COMPOSITION 100% Wool

STOCK SIZES (cm) 160 x 230 / 200 x 290 / 250 x 350 / 300 x 400

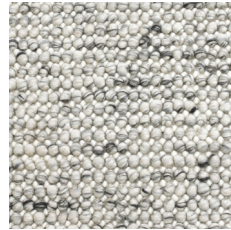
CUSTOM OPTIONS Not available

THICKNESS Approx 20 mm

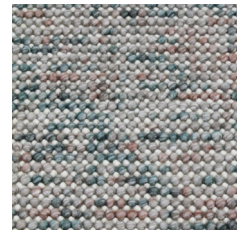
EDGE FINISH Overlocked / hemmed edge

USE PURPOSE Indoor

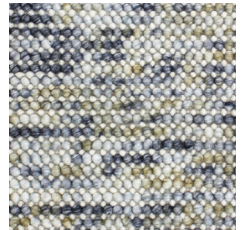
SUITABILITY Residential



ICE



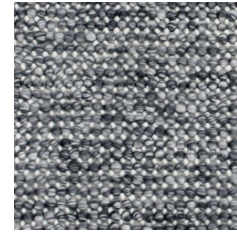
OASIS



MINERAL



LINEN



STORM

LOOP PILE RUG CARE

IMPORTANT Use a flat head when vacuuming. To prevent excess fuzzing, do not use a brush head or turn brush setting off.

Vacuum regularly. Clean spills immediately. Never rub a spill, instead blot any liquids with a dry absorbent white cloth or paper towel. Some stains may be cleaned with a mild clear detergent and lukewarm water. If the stain cannot be removed, seek specialist advice. Do not machine wash.

MANUFACTURING VARIATIONS

All rugs are made by hand which means there is a slight chance that variations in size and colour can occur. Up to 5% variation in size and colour is considered acceptable. Variations in pile height and total thickness of 1-2 mm are considered acceptable.

PRODUCT CHARACTERISTICS

SHEDDING Often new rugs begin to produce fluff as a result of loose fibres that remain in the rug after the manufacturing process. Vacuum regularly and this will reduce over time.

SPROUTING Occasionally loose yarn ends will rise above the pile surface. This is a characteristic of this particular weave. Strands can be safely trimmed to the surface when this occurs with a pair of sharp scissors.