

# GARCIA



**CONSTRUCTION** Handloom Knotted

**COMPOSITION** Wool & Artsilk

**STOCK SIZES (cm)** 160 x 230 / 200 x 290 / 250 x 350 / 300 x 400

**CUSTOM OPTIONS** Custom sizes available

**PILE TYPE** Cut and loop pile

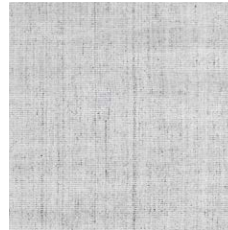
**THICKNESS** Approx 10 mm

**FINISH** No Carving

**EDGE FINISH** Overlocked

**USE PURPOSE** Indoor

**SUITABILITY** Residential



WHISPER



OYSTER



FUDGE

## CARE

Vacuum regularly. Clean spills immediately. Never rub a spill, instead blot any liquids with a dry absorbent white cloth or paper towel. Some stains may be cleaned with a mild clear detergent and lukewarm water. If the stain cannot be removed, seek specialist advice. Do not machine wash.

## MANUFACTURING VARIATIONS

All rugs are made by hand which means there is a slight chance that variations in size and colour can occur. Up to 5% variation in size and colour is considered acceptable. Variations in pile height and total thickness of 1-2 mm are considered acceptable.

## PRODUCT CHARACTERISTICS

**SHEDDING** Often new rugs begin to produce fluff as a result of loose fibres that remain in the rug after the manufacturing process. Vacuum regularly and this will reduce over time.

**SPROUTING** Occasionally loose yarn ends will rise above the pile surface. This is a characteristic of this particular weave. Strands can be safely trimmed to the surface when this occurs with a pair of sharp scissors.

**SHADING** All cut pile rugs are susceptible to exhibit characteristics of shading over time. This is the result of the reversal of pile direction during use causing areas of the rug to appear to have changed colour. This effect is not a manufacturing fault nor can it be prevented.