



CALA



Quality Analytical Services

A43, 64089 393 Ave E
Okotoks, Alberta
T1S 0L1
Tel 1-403-973-5316

Certificate of Analysis

Sample Number: 004485
Version Number:

Sample Receipt Date: 22-Oct-11
Testing Completed Date: 22-Oct-17
Report Date: 22-Oct-17
Customer Reference Number: Grape Gasoline #9- Batch ID#184
Sample Type: Cannabis Dried Flower
Remarks:

Results:

Summary

Parameter	Result	Units
Total THC	27.572	%
Total THC	275.72	mg/g
Total CBD	0.054	%
Moisture	13	%
Total Terpenes	1.53	%

Aflatoxins - adapted from USP 561

Parameter	Result	Units	RL	Comments	QASM
Aflatoxin B1	<RL	µg/Kg	2		QASM028
Aflatoxins B1, B2, G1, G2 - Total	<RL	µg/Kg	4		QASM028

Signed On Behalf Of QAS Ltd:

S. Gardner

Lab Manager

Checked by:

P. Kemp

Senior Analyst

Notes:

RL - Reporting Limit

Tests marked with # are sub contracted

<RL implies that nothing was detected above the RL

** - Result above Client Limit.

The results only apply to the sample tested as received

Test reports shall not be reproduced without the written permission of the laboratory



CALA



Quality Analytical Services

A43, 64089 393 Ave E
Okotoks, Alberta
T1S 0L1
Tel 1-403-973-5316

Certificate of Analysis

Sample Number: 004485
Version Number:

Sample Receipt Date: 22-Oct-11
Testing Completed Date: 22-Oct-17
Report Date: 22-Oct-17
Customer Reference Number: Grape Gasoline #9- Batch ID#184
Sample Type: Cannabis Dried Flower
Remarks:

Results:

Summary

Parameter	Result	Units
Total THC	27.572	%
Total THC	275.72	mg/g
Total CBD	0.054	%
Moisture	13	%
Total Terpenes	1.53	%

Cannabinoids (Full)

Parameter	Result	Units	RL	Comments	QASM
Cannabichromene	<RL	mg/g	0.01		QASM025
Cannabidiol	<RL	mg/g	0.01		QASM025
Cannabidiolic acid	0.62	mg/g	0.01		QASM025
Cannabidivarin	<RL	mg/g	0.01		QASM025
Cannabigerol	1.38	mg/g	0.01		QASM025
Cannabigerolic acid	7.88	mg/g	0.01		QASM025
Cannabinol	<RL	mg/g	0.01		QASM025
Cannabinolic Acid	<RL	mg/g	0.01		QASM025
Tetrahydrocannabinolic acid	304.94	mg/g	0.01		QASM025
Tetrahydrocannabivarin	<RL	mg/g	0.01		QASM025
Δ8-Tetrahydrocannabinol	<RL	mg/g	0.01		QASM025
Δ9-Tetrahydrocannabinol	8.29	mg/g	0.01		QASM025

Signed On Behalf Of QAS Ltd.

S. Gardner
Lab Manager

Checked by:

P. Kemp
Senior Analyst

Notes:

RL - Reporting Limit
Tests marked with # are sub contracted
<RL implies that nothing was detected above the RL
** - Result above Client Limit
The results only apply to the sample tested as received
Test reports shall not be reproduced without the written permission of the laboratory



CALA



Quality Analytical Services

A43, 64089 393 Ave E
Okotoks, Alberta
T1S 0L1
Tel 1-403-973-5316

Certificate of Analysis

Sample Number: 004485
Version Number:

Sample Receipt Date: 22-Oct-11
Testing Completed Date: 22-Oct-17
Report Date: 22-Oct-17
Customer Reference Number: Grape Gasoline #9- Batch ID#184
Sample Type: Cannabis Dried Flower
Remarks:

Results:

Summary

Parameter	Result	Units
Total THC	27.572	%
Total THC	275.72	mg/g
Total CBD	0.054	%
Moisture	13	%
Total Terpenes	1.53	%

Foreign Matter - Method Basis EP 2.8.2

Parameter	Result	Units	RL	Comments	QASM
Foreign Matter	0	%	None		QASM029

Signed On Behalf Of QAS Ltd:

S. Gardner
Lab Manager

Checked by:

P. Kemp
Senior Analyst

Notes:

RL - Reporting Limit
Tests marked with # are sub contracted
<RL implies that nothing was detected above the RL
** - Result above Client Limit
The results only apply to the sample tested as received
Test reports shall not be reproduced without the written permission of the laboratory



CALA



Quality Analytical Services

A43, 64089 393 Ave E
Okotoks, Alberta
T1S 0L1
Tel 1-403-973-5316

Certificate of Analysis

Sample Number: 004485
Version Number:

Sample Receipt Date: 22-Oct-11
Testing Completed Date: 22-Oct-17
Report Date: 22-Oct-17
Customer Reference Number: Grape Gasoline #9- Batch ID#184
Sample Type: Cannabis Dried Flower
Remarks:

Results:

Summary

Parameter	Result	Units
Total THC	27.572	%
Total THC	275.72	mg/g
Total CBD	0.054	%
Moisture	13	%
Total Terpenes	1.53	%

HC - Microbiology

Parameter	Result	Units	RL	Comments	QASM
Bile Tolerant Gram Negative Count	<10	cfu/g	10		#
Escherichia coli	Absent in 1g	cfu/g	1		#
Pseudomonas aeruginosa	Absent in 1g	cfu/g	1		#
Salmonella spp.	Absent in .25g	cfu/g	1		#
Staphylococcus aureus	Absent in 1g	cfu/g	1		#
Total Aerobic Count	50	cfu/g	10		#
Total Yeast & Mold Count	150	cfu/g	10		#

Signed On Behalf Of QAS Ltd.

S. Gardner
Lab Manager

Checked by:

P. Kemp
Senior Analyst

Notes:

RL - Reporting Limit
Tests marked with # are sub contracted
<RL implies that nothing was detected above the RL
** - Result above Client Limit.
The results only apply to the sample tested as received
Test reports shall not be reproduced without the written permission of the laboratory



CALA



Quality Analytical Services

A43, 64089 393 Ave E
Okotoks, Alberta
T1S 0L1
Tel 1-403-973-5316

Certificate of Analysis

Sample Number: 004485
Version Number:

Sample Receipt Date: 22-Oct-11
Testing Completed Date: 22-Oct-17
Report Date: 22-Oct-17
Customer Reference Number: Grape Gasoline #9- Batch ID#184
Sample Type: Cannabis Dried Flower
Remarks:

Results:

Summary

Parameter	Result	Units
Total THC	27.572	%
Total THC	275.72	mg/g
Total CBD	0.054	%
Moisture	13	%
Total Terpenes	1.53	%

Heavy Metals - Method Basis EP 2.4.27

Parameter	Result	Units	RL	Comments	QASM
Arsenic	<RL	µg/g	0.025		QASM011
Cadmium	0.116	µg/g	0.02		QASM011
Lead	0.011	µg/g	0.01		QASM011
Mercury	0.012	µg/g	0.005		QASM011

Signed On Behalf Of QAS Ltd:

S. Gardner
Lab Manager

Checked by:

P. Kemp
Senior Analyst

Notes:

RL - Reporting Limit
Tests marked with # are sub contracted
<RL implies that nothing was detected above the RL
** - Result above Client Limit
The results only apply to the sample tested as received
Test reports shall not be reproduced without the written permission of the laboratory



CALA



Quality Analytical Services

A43, 64089 393 Ave E
Okotoks, Alberta
T1S 0L1
Tel 1-403-973-5316

Certificate of Analysis

Sample Number: 004485
Version Number:

Sample Receipt Date: 22-Oct-11
Testing Completed Date: 22-Oct-17
Report Date: 22-Oct-17
Customer Reference Number: Grape Gasoline #9- Batch ID#184
Sample Type: Cannabis Dried Flower
Remarks:

Results:

Summary

Parameter	Result	Units
Total THC	27.572	%
Total THC	275.72	mg/g
Total CBD	0.054	%
Moisture	13	%
Total Terpenes	1.53	%

Moisture - Method Basis EP 2.2.32

Parameter	Result	Units	RL	Comments	QASM
Moisture	13	%	None		QASM027

Signed On Behalf Of QAS Ltd:

S. Gardner
Lab Manager

Checked by:

P. Kemp
Senior Analyst

Notes:

RL - Reporting Limit

Tests marked with # are sub contracted

<RL implies that nothing was detected above the RL

** - Result above Client Limit

The results only apply to the sample tested as received

Test reports shall not be reproduced without the written permission of the laboratory



CALA



Quality Analytical Services

A43, 64089 393 Ave E
Okotoks, Alberta
T1S 0L1
Tel 1-403-973-5316

Certificate of Analysis

Sample Number: 004485
Version Number:

Sample Receipt Date: 22-Oct-11
Testing Completed Date: 22-Oct-17
Report Date: 22-Oct-17
Customer Reference Number: Grape Gasoline #9- Batch ID#184
Sample Type: Cannabis Dried Flower
Remarks:

Results:

Summary

Parameter	Result	Units
Total THC	27.572	%
Total THC	275.72	mg/g
Total CBD	0.054	%
Moisture	13	%
Total Terpenes	1.53	%

Pesticides - Method Basis EP 2.8.13

Parameter	Result	Units	RL	Comments	QASM
Abamectin	<RL	mg/Kg	0.07		QASM028
Acephate	<RL	mg/Kg	0.02		QASM028
Acequinocyl	<RL	mg/Kg	0.02		QASM028
Acetamiprid	<RL	mg/Kg	0.01		QASM028
Aldicarb	<RL	mg/Kg	0.01		QASM028
Allethrin	<RL	mg/Kg	0.05		QASM028
Azadirachtin	<RL	mg/Kg	0.04		QASM028
Azoxystrobin	<RL	mg/Kg	0.01		QASM028
Benzovindiflupyr	<RL	mg/Kg	0.01		QASM028
Bifenazate	<RL	mg/Kg	0.01		QASM028
Bifenthrin	<RL	mg/Kg	0.01		QASM028
Boscalid	<RL	mg/Kg	0.01		QASM028
Buprofezin	<RL	mg/Kg	0.01		QASM028

Signed On Behalf Of QAS Ltd:

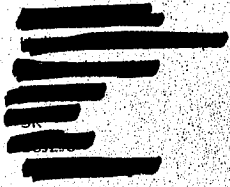
S. Gardner
Lab Manager

Checked by:

P. Kemp
Senior Analyst

Notes:

RL - Reporting Limit
Tests marked with # are sub contracted
<RL implies that nothing was detected above the RL
** - Result above Client Limit
The results only apply to the sample tested as received
Test reports shall not be reproduced without the written permission of the laboratory



CALA



Quality Analytical Services

A43, 64089 393 Ave E
Okotoks, Alberta
T1S 0L1
Tel 1-403-973-5316

Certificate of Analysis

Sample Number: 004485
Version Number:

Sample Receipt Date: 22-Oct-11
Testing Completed Date: 22-Oct-17
Report Date: 22-Oct-17
Customer Reference Number: Grape Gasoline #9- Batch ID#184
Sample Type: Cannabis Dried Flower
Remarks:

Results:

Summary

Parameter	Result	Units
Total THC	27.572	%
Total THC	275.72	mg/g
Total CBD	0.054	%
Moisture	13	%
Total Terpenes	1.53	%

Pesticides - Method Basis EP 2.8.13

Parameter	Result	Units	RL	Comments	QASM
Carbaryl	<RL	mg/Kg	0.01		QASM028
Carbofuran	<RL	mg/Kg	0.02		QASM028
Chlorantraniliprole	<RL	mg/Kg	0.01		QASM028
Chlorfenapyr	<RL	mg/Kg	0.01		QASM028
Chlorpyrifos	<RL	mg/Kg	0.01		QASM028
Clofentezine	<RL	mg/Kg	0.01		QASM028
Clothianidin	<RL	mg/Kg	0.01		QASM028
Coumaphos	<RL	mg/Kg	0.01		QASM028
Cyantraniliprole	<RL	mg/Kg	0.01		QASM028
Cyfluthrin	<RL	mg/Kg	0.02		QASM028
Cypermethrin	<RL	mg/Kg	0.04		QASM028
Cyprodinil	<RL	mg/Kg	0.04		QASM028
Daminozide	<RL	mg/Kg	0.01		QASM028

Signed On Behalf Of QAS Ltd:

S. Gardner
Lab Manager

Checked by:

P. Kemp
Senior Analyst

Notes:

RL - Reporting Limit
Tests marked with # are sub contracted
<RL implies that nothing was detected above the RL
** - Result above Client Limit.
The results only apply to the sample tested as received
Test reports shall not be reproduced without the written permission of the laboratory



CALA



Quality Analytical Services

A43, 64089 393 Ave E
Okotoks, Alberta
T1S 0L1
Tel 1-403-973-5316

Certificate of Analysis

Sample Number: 004485
Version Number:

Sample Receipt Date: 22-Oct-11
Testing Completed Date: 22-Oct-17
Report Date: 22-Oct-17
Customer Reference Number: Grape Gasoline #9- Batch ID#184
Sample Type: Cannabis Dried Flower
Remarks:

Results:

Summary

Parameter	Result	Units
Total THC	27.572	%
Total THC	275.72	mg/g
Total CBD	0.054	%
Moisture	13	%
Total Terpenes	1.53	%

Pesticides - Method Basis EP 2.8.13

Parameter	Result	Units	RL	Comments	QASM
Deltamethrin	<RL	mg/Kg	0.02		QASM028
Diazinon	<RL	mg/Kg	0.01		QASM028
Dichlorvos	<RL	mg/Kg	0.03		QASM028
Dimethoate	<RL	mg/Kg	0.01		QASM028
Dimethomorph	<RL	mg/Kg	0.01		QASM028
Dinotefuran	<RL	mg/Kg	0.02		QASM028
Dodemorph	<RL	mg/Kg	0.01		QASM028
Endosulfan sulfate	<RL	mg/Kg	0.05		QASM028
Endosulfan-alpha	<RL	mg/Kg	0.2		QASM028
Endosulfan-beta	<RL	mg/Kg	0.05		QASM028
Ethoprophos	<RL	mg/Kg	0.01		QASM028
Etofenprox	<RL	mg/Kg	0.01		QASM028
Etozazole	<RL	mg/Kg	0.01		QASM028

Signed On Behalf Of QAS Ltd:

S. Gardner
Lab Manager

Checked by:

P. Kemp
Senior Analyst

Notes:

RL - Reporting Limit
Tests marked with # are sub contracted
<RL implies that nothing was detected above the RL
** - Result above Client Limit.
The results only apply to the sample tested as received
Test reports shall not be reproduced without the written permission of the laboratory



CALA



Quality Analytical Services

A43, 64089 393 Ave E
Okotoks, Alberta
T1S 0L1
Tel 1-403-973-5316

Certificate of Analysis

Sample Number: 004485
Version Number:

Sample Receipt Date: 22-Oct-11
Testing Completed Date: 22-Oct-17
Report Date: 22-Oct-17
Customer Reference Number: Grape Gasoline #9- Batch ID#184
Sample Type: Cannabis Dried Flower
Remarks:

Results:

Summary

Parameter	Result	Units
Total THC	27.572	%
Total THC	275.72	mg/g
Total CBD	0.054	%
Moisture	13	%
Total Terpenes	1.53	%

Pesticides - Method Basis EP 2.8.13

Parameter	Result	Units	RL	Comments	QASM
Etridiazole	<RL	mg/Kg	0.01		QASM028
Fenoxycarb	<RL	mg/Kg	0.01		QASM028
Fenpyroximate	<RL	mg/Kg	0.01		QASM028
Fensulfothion	<RL	mg/Kg	0.01		QASM028
Fenthion	<RL	mg/Kg	0.01		QASM028
Fenvalerate	<RL	mg/Kg	0.07		QASM028
Fipronil	<RL	mg/Kg	0.02		QASM028
Flonicamid	<RL	mg/Kg	0.01		QASM028
Fludioxonil	<RL	mg/Kg	0.02		QASM028
Fluopyram	<RL	mg/Kg	0.01		QASM028
Hexythiazox	<RL	mg/Kg	0.01		QASM028
Imazalil	<RL	mg/Kg	0.01		QASM028
Imidacloprid	<RL	mg/Kg	0.01		QASM028

Signed On Behalf Of QAS Ltd:

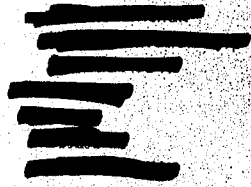
S. Gardner
Lab Manager

Checked by:

P. Kemp
Senior Analyst

Notes:

RL - Reporting Limit
Tests marked with # are sub contracted
<RL implies that nothing was detected above the RL
** - Result above Client Limit
The results only apply to the sample tested as received
Test reports shall not be reproduced without the written permission of the laboratory



CALA



Quality Analytical Services

A43, 64089 393 Ave E
Okotoks, Alberta
T1S 0L1
Tel 1-403-973-5316

Certificate of Analysis

Sample Number: 004485
Version Number:

Sample Receipt Date: 22-Oct-11
Testing Completed Date: 22-Oct-17
Report Date: 22-Oct-17
Customer Reference Number: Grape Gasoline #9- Batch ID#184
Sample Type: Cannabis Dried Flower
Remarks:

Results:

Summary

Parameter	Result	Units
Total THC	27.572	%
Total THC	275.72	mg/g
Total CBD	0.054	%
Moisture	13	%
Total Terpenes	1.53	%

Pesticides - Method Basis EP 2.8.13

Parameter	Result	Units	RL	Comments	QASM
Iprodione	<RL	mg/Kg	0.5		QASM028
Kinoprene	<RL	mg/Kg	0.01		QASM028
Kresoxim-methyl	<RL	mg/Kg	0.01		QASM028
Malathion	<RL	mg/Kg	0.01		QASM028
Metalaxyl	<RL	mg/Kg	0.01		QASM028
Methiocarb	<RL	mg/Kg	0.01		QASM028
Methomyl	<RL	mg/Kg	0.01		QASM028
Methoprene	<RL	mg/Kg	0.04		QASM028
Mevinphos	<RL	mg/Kg	0.01		QASM028
MGK-264	<RL	mg/Kg	0.01		QASM028
Myclobutanil	<RL	mg/Kg	0.01		QASM028
Naled	<RL	mg/Kg	0.01		QASM028
Novaluron	<RL	mg/Kg	0.01		QASM028

Signed On Behalf Of QAS Ltd:

S. Gardner

Lab Manager

Checked by:

P. Kemp

Senior Analyst

Notes:

RL - Reporting Limit

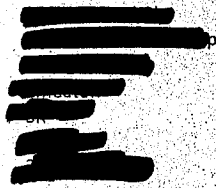
Tests marked with # are sub contracted

<RL implies that nothing was detected above the RL

** - Result above Client Limit

The results only apply to the sample tested as received

Test reports shall not be reproduced without the written permission of the laboratory



CALA



Quality Analytical Services

A43, 64089 397 Ave E
Okotoks, Alberta
T1S 0L1
Tel 1-403-973-5316

Certificate of Analysis

Sample Number: 004485
Version Number:

Sample Receipt Date: 22-Oct-11
Testing Completed Date: 22-Oct-17
Report Date: 22-Oct-17
Customer Reference Number: Grape Gasoline #9- Batch ID#184
Sample Type: Cannabis Dried Flower
Remarks:

Results:

Summary

Parameter	Result	Units
Total THC	27.572	%
Total THC	275.72	mg/g
Total CBD	0.054	%
Moisture	13	%
Total Terpenes	1.53	%

Pesticides - Method Basis EP 2.8.13

Parameter	Result	Units	RL	Comments	QASM
Oxamyl	<RL	mg/Kg	0.01		QASM028
Pacllobutrazol	<RL	mg/Kg	0.01		QASM028
Parathion-methyl	<RL	mg/Kg	0.05		QASM028
Permethrin	<RL	mg/Kg	0.01		QASM028
Phenothrin	<RL	mg/Kg	0.03		QASM028
Phosmet	<RL	mg/Kg	0.01		QASM028
Piperonyl butoxide	<RL	mg/Kg	0.01		QASM028
Pirimicarb	<RL	mg/Kg	0.01		QASM028
Prallethrin	<RL	mg/Kg	0.01		QASM028
Propiconazole	<RL	mg/Kg	0.01		QASM028
Propoxur	<RL	mg/Kg	0.01		QASM028
Pyraclostrobin	<RL	mg/Kg	0.01		QASM028
Pyrethrins	<RL	mg/Kg	0.01		QASM028

Signed On Behalf Of QAS Ltd.

S. Gardner
Lab Manager

Checked by:

P. Kemp
Senior Analyst

Notes:

RL - Reporting Limit
Tests marked with # are sub contracted
<RL implies that nothing was detected above the RL
** - Result above Client Limit
The results only apply to the sample tested as received
Test reports shall not be reproduced without the written permission of the laboratory



CALA



Quality Analytical Services

A43, 64089 393 Ave E
Okotoks, Alberta
T1S 0L1
Tel 1-403-973-5316

Certificate of Analysis

Sample Number: 004485
Version Number:

Sample Receipt Date: 22-Oct-11
Testing Completed Date: 22-Oct-17
Report Date: 22-Oct-17
Customer Reference Number: Grape Gasoline #9- Batch ID#184
Sample Type: Cannabis Dried Flower
Remarks:

Results:

Summary

Parameter	Result	Units
Total THC	27.572	%
Total THC	275.72	mg/g
Total CBD	0.054	%
Moisture	13	%
Total Terpenes	1.53	%

Pesticides - Method Basis EP 2.8.13

Parameter	Result	Units	RL	Comments	QASM
Pyridaben	<RL	mg/Kg	0.01		QASM028
Quintozene	<RL	mg/Kg	0.02		QASM028
Resmethrin	<RL	mg/Kg	0.01		QASM028
Spinetoram	<RL	mg/Kg	0.02		QASM028
Spinosad	<RL	mg/Kg	0.02		QASM028
Spirodiclofen	<RL	mg/Kg	0.03		QASM028
Spiromesifen	<RL	mg/Kg	0.01		QASM028
Spirotetramat	<RL	mg/Kg	0.01		QASM028
Spiroxamine	<RL	mg/Kg	0.02		QASM028
Tebuconazole	<RL	mg/Kg	0.01		QASM028
Tebufenozide	<RL	mg/Kg	0.01		QASM028
Teflubenzuron	<RL	mg/Kg	0.03		QASM028
Tetrachlorvinphos	<RL	mg/Kg	0.01		QASM028

Signed On Behalf Of QAS Ltd.

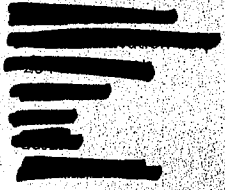
S. Gardner
Lab Manager

Checked by:

P. Kemp
Senior Analyst

Notes:

RL - Reporting Limit
Tests marked with # are sub contracted
<RL implies that nothing was detected above the RL
** - Result above Client Limit.
The results only apply to the sample tested as received
Test reports shall not be reproduced without the written permission of the laboratory



CALA



Quality Analytical Services

A43, 64089 393 Ave E
Okotoks, Alberta
T1S 0L1
Tel 1-403-973-5316

Certificate of Analysis

Sample Number: 004485
Version Number:

Sample Receipt Date: 22-Oct-11
Testing Completed Date: 22-Oct-17
Report Date: 22-Oct-17
Customer Reference Number: Grape Gasoline #9- Batch ID#184
Sample Type: Cannabis Dried Flower
Remarks:

Results:

Summary

Parameter	Result	Units
Total THC	27.572	%
Total THC	275.72	mg/g
Total CBD	0.054	%
Moisture	13	%
Total Terpenes	1.53	%

Pesticides - Method Basis EP 2.8.13

Parameter	Result	Units	RL	Comments	QASM
Tetramethrin	<RL	mg/Kg	0.01		QASM028
Thiacloprid	<RL	mg/Kg	0.01		QASM028
Thiamethoxam	<RL	mg/Kg	0.01		QASM028
Thiophanate-methyl	<RL	mg/Kg	0.01		QASM028
Trifloxystrobin	<RL	mg/Kg	0.01		QASM028

Signed On Behalf Of QAS Ltd:

S. Gardner

Lab Manager

Checked by:

P. Kemp

Senior Analyst

Notes:

RL – Reporting Limit

Tests marked with # are sub contracted

<RL implies that nothing was detected above the RL

** - Result above Client Limit

The results only apply to the sample tested as received

Test reports shall not be reproduced without the written permission of the laboratory



CALA



Quality Analytical Services

A43, 64089 393 Ave E
Okotoks, Alberta
T1S 0L1
Tel 1-403-973-5316

Certificate of Analysis

Sample Number: 004485
Version Number:

Sample Receipt Date: 22-Oct-11
Testing Completed Date: 22-Oct-17
Report Date: 22-Oct-17
Customer Reference Number: Grape Gasoline #9- Batch ID#184
Sample Type: Cannabis Dried Flower
Remarks:

Results:

Summary

Parameter	Result	Units
Total THC	27.572	%
Total THC	275.72	mg/g
Total CBD	0.054	%
Moisture	13	%
Total Terpenes	1.53	%

Terpenes - Method Basis EP 2.2.28/2.2.43

Parameter	Result	Units	RL	Comments	QASM
3-Carene	<RL	mg/Kg	50		QASM024
alpha-Bisabolol	301	mg/Kg	50		QASM024
alpha-Cedrene	<RL	mg/Kg	50		QASM024
alpha-Humulene	439	mg/Kg	50		QASM024
alpha-Pinene	131	mg/Kg	50		QASM024
Alpha-Terpinene	<RL	mg/Kg	50		QASM024
beta-Myrcene	8042	mg/Kg	50		QASM024
beta-Pinene	264	mg/Kg	50		QASM024
Borneol (mix of isomers)	<RL	mg/Kg	50		QASM024
Camphene	<RL	mg/Kg	50		QASM024
Camphor (mix of isomers)	<RL	mg/Kg	50		QASM024
Caryophyllene Oxide	<RL	mg/Kg	50		QASM024
Cedrol	<RL	mg/Kg	50		QASM024

Signed On Behalf Of QAS Ltd:

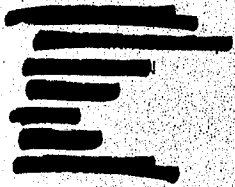
S. Gardner
Lab Manager

Checked by:

P. Kemp
Senior Analyst

Notes:

RL - Reporting Limit
Tests marked with # are sub contracted
<RL implies that nothing was detected above the RL
** - Result above Client Limit
The results only apply to the sample tested as received
Test reports shall not be reproduced without the written permission of the laboratory



CALA



Quality Analytical Services

A43, 64089 393 Ave E
Okotoks, Alberta
T1S 0L1
Tel 1-403-973-5316

Certificate of Analysis

Sample Number: 004485
Version Number:

Sample Receipt Date: 22-Oct-11
Testing Completed Date: 22-Oct-17
Report Date: 22-Oct-17
Customer Reference Number: Grape Gasoline #9- Batch ID#184
Sample Type: Cannabis Dried Flower
Remarks:

Results:

Summary

Parameter	Result	Units
Total THC	27.572	%
Total THC	275.72	mg/g
Total CBD	0.054	%
Moisture	13	%
Total Terpenes	1.53	%

Terpenes - Method Basis EP 2.2.28/2.2.43

Parameter	Result	Units	RL	Comments	QASM
cis-Nerolidol	<RL	mg/Kg	50		QASM024
Eucalyptol	<RL	mg/Kg	50		QASM024
Fenchol	102	mg/Kg	50		QASM024
Fenchone (mix of isomers)	<RL	mg/Kg	50		QASM024
gamma-Terpinene	<RL	mg/Kg	50		QASM024
Geraniol	<RL	mg/Kg	50		QASM024
Geranyl Acetate	<RL	mg/Kg	50		QASM024
Guaiol	<RL	mg/Kg	50		QASM024
Isobornol	<RL	mg/Kg	50		QASM024
Isopulegol	<RL	mg/Kg	50		QASM024
Limonene	1034	mg/Kg	50		QASM024
Linalool	994	mg/Kg	50		QASM024
Menthol	<RL	mg/Kg	50		QASM024

Signed On Behalf Of QAS Ltd:

S. Gardner
Lab Manager

Checked by:

P. Kemp
Senior Analyst

Notes:

RL - Reporting Limit
Tests marked with # are sub contracted
<RL implies that nothing was detected above the RL
** - Result above Client Limit
The results only apply to the sample tested as received
Test reports shall not be reproduced without the written permission of the laboratory



CALA



Quality Analytical Services

A43, 64089 393 Ave E
Okotoks, Alberta
T1S 0L1
Tel 1-403-973-5316

Certificate of Analysis

Sample Number: 004485
Version Number:

Sample Receipt Date: 22-Oct-11
Testing Completed Date: 22-Oct-17
Report Date: 22-Oct-17
Customer Reference Number: Grape Gasoline #9- Batch ID#184
Sample Type: Cannabis Dried Flower
Remarks:

Results:

Summary

Parameter	Result	Units
Total THC	27.572	%
Total THC	275.72	mg/g
Total CBD	0.054	%
Moisture	13	%
Total Terpenes	1.53	%

Terpenes - Method Basis EP 2.2.28/2.2.43

Parameter	Result	Units	RL	Comments	QASM
Nerol	<RL	mg/Kg	50		QASM024
Ocimene	2369	mg/Kg	50		QASM024
Phellandrene	<RL	mg/Kg	50		QASM024
Pulegone	<RL	mg/Kg	50		QASM024
Sabinene	<RL	mg/Kg	50		QASM024
Sabinene Hydrate	<RL	mg/Kg	50		QASM024
Terpineol (mix of isom...	157	mg/Kg	50		QASM024
Terpinolene	<RL	mg/Kg	50		QASM024
trans-Caryophyllene	1441	mg/Kg	50		QASM024
trans-Nerolidol	<RL	mg/Kg	50		QASM024
Valencene	<RL	mg/Kg	50		QASM024

Signed On Behalf Of QAS Ltd:

S. Gardner
Lab Manager

Checked by:

P. Kemp
Senior Analyst

Notes:

RL - Reporting Limit
Tests marked with # are sub contracted
<RL implies that nothing was detected above the RL
** - Result above Client Limit
The results only apply to the sample tested as received
Test reports shall not be reproduced without the written permission of the laboratory