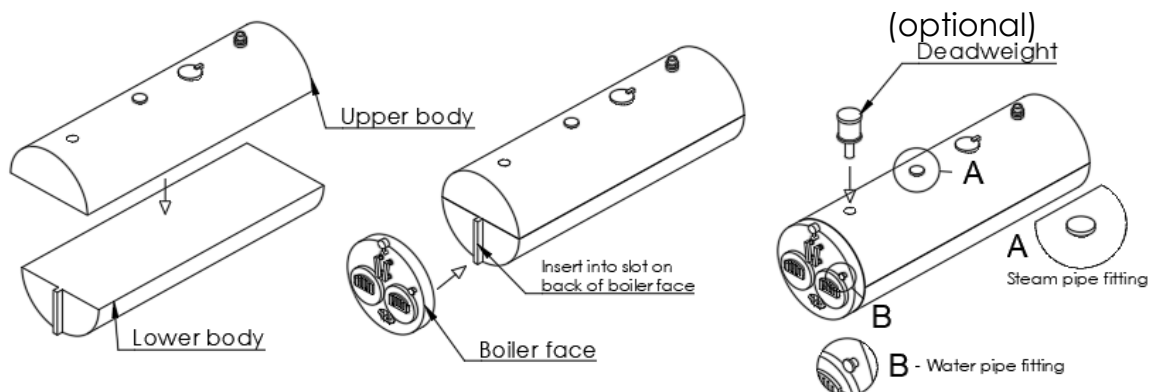


# Lancashire Boiler (barrel)



## Kit contents

- Upper body
- Lower body
- Boiler face
- Deadweight

## Assembly instructions

### 1. Glue two body half together

With the hole on the upper body at the same end as the vertical bar on the lower body, glue the two parts together. Take time to ensure the two parts are aligned for the best finish.

### 2. Attached the boiler face

Glue the boiler face in place on the front of the body, using standard superglue. The lower body has a vertical bar that slots into the back of the boiler face, to help align the face.

### 3. Add the deadweight (optional)

Depending how the model is going to be used on a layout (e.g. a boiler in transit or being removed), you may wish to skip this part. Glue the small pin of the deadweight into the hole in the top of the upper body.

### 4. Decorate

Paint and decorate the boiler as you see fit. Acrylic paints will work well. We recommend spraying the model with a primer before painting.

### 5. Add further detailing (optional)

If you want to add a little more detail to the model, you have the option of adding pipework to the steam pipe and water pipe fittings (labelled A and B in the diagram).