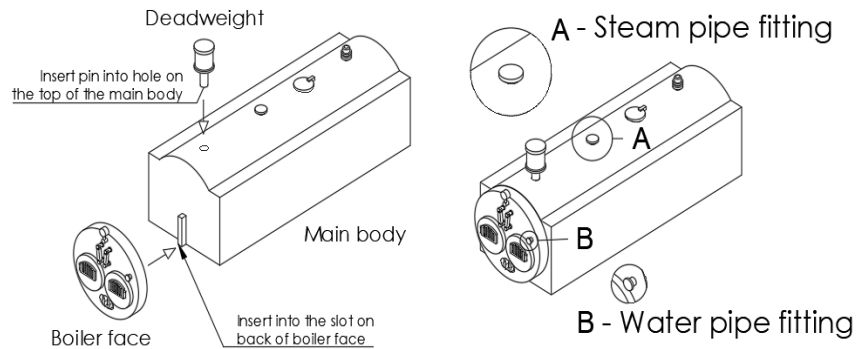


# Lancashire Boiler

## Kit contents

- Main body
- Boiler face
- Deadweight



## Assembly instructions

### 1. Attached the boiler face

Glue the boiler face in place on the front of the main body, using standard superglue. The main body has a vertical bar that slots into the back of the boiler face, to help align the face.

### 2. Add the deadweight

Glue the small pin of the deadweight into the hole in the top of the main body.

### 3. Decorate

Paint and decorate the boiler as you see fit. Acrylic paints will work well. We recommend spraying the model with a primer before painting.

### 4. Add detailing (optional)

If you want to add a little more detail to the model, you have the option of adding pipework to the steam pipe and water pipe fittings (labelled A and B in the diagram).