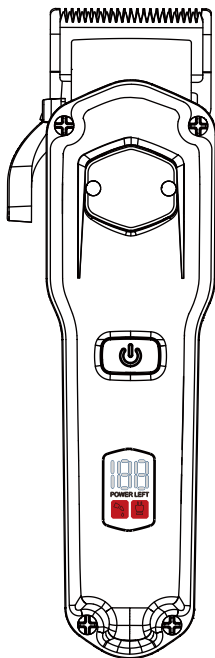


# Professional Pet Clippers

User Manual

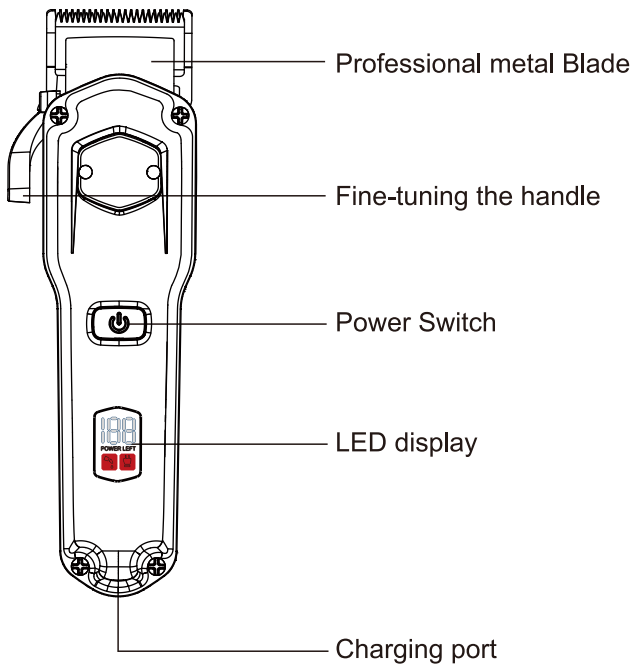
Model: RFC-676



Thank you for choosing our products. For better use and prolonging the life of clippers, please read the operation manual carefully before use.

If you ever have any issues with your pet grooming kit, please contact us by email at [Support@oneisall.com](mailto:Support@oneisall.com)

ON-D63



Brush



Oil bottle



Protective cover



USB charging cable



3mm



6mm



10mm



13mm



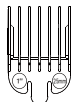
16mm



19mm



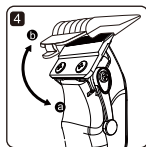
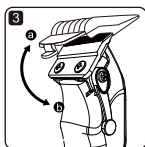
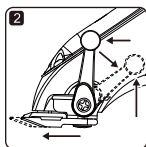
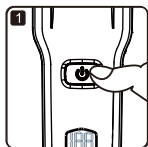
22mm



25mm

## Using Methods

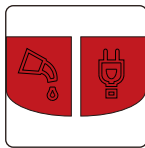
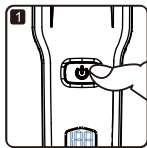
1. Press the power, the display light up.
2. fine-tune the cutter Adjust the cutter by rotating the taper lever from forward.
3. Mount the limit comb:  
A: Align the limit comb with the blade edge  
B: Slightly forward push to mount it.
4. Disassemble the limit comb:  
Just pull hard the limit comb.



## 5. Travel lock function

Press and hold the switch for 3 seconds, the product is locked, and the red indicator light flashes for 3 seconds;

Press and hold the switch for 3 seconds while the red indicator light flashes for 3 seconds, the product is turned on.

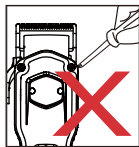


## 6. Cleaning & Maintenance

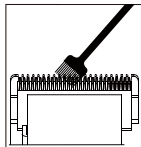
Every 60 minutes of use, the oil bottle symbol on the display flashes to indicate Add lubricating oil.

## Tips

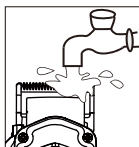
- 1.To ensure the normal operation of the blade, please do not disassemble the cutter head!
- 2.To clean the blade you can use the matching brush to gently sweep away the excess hair.
- 3.It can be washed under the faucet.
- 4.After rinsing, please wipe clean with a dry cloth.
- 5.Drip matching lubricating oil on the blade.
- 6.After maintenance, put the protective cover on the cutter head to protect the cutter head.



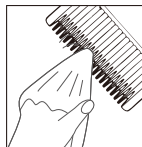
1



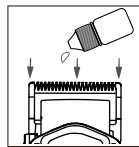
2



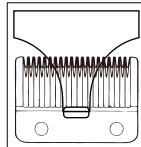
3



4



5

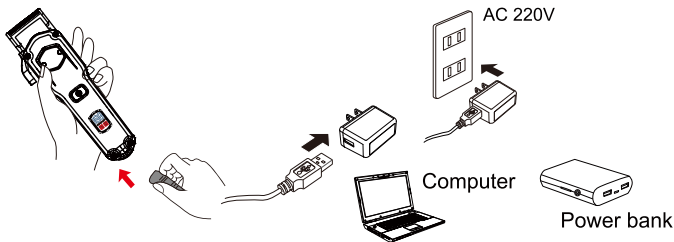


6

## Plug-in Using Methods

- 1.Turned off the machine, plug the USB cable into the 5V/1A adapter (desktop/mobile power and other power supplies with USB interface) to charge (the charging indicator will light up)

2.The display will show the charging status, just unplug the charging cable after it is fully charged.



## LCD Screen Display



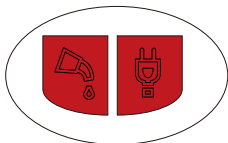
Battery percentage display(1%-100%)

### Left-Add oil indication

It needs to add oil to the blade when the light is on

### Right-Charging Indication

Charging light will flash when power's less than 15%. Please charge immediately



Left Right



**Work while charging is available**

**(Please turn off the machine before charging)**

## Charging Instructions

1..Please charge for 3 hours when purchasing a new product for the first time. After 3 to 4 times of full charge and discharge, the battery capacity will reach the best condition.

Specifications	Product name: Electric Dog Clippers	Model:RFC-676
	voltage: 3.7v	Battery type: 2000mAh
	Output: 5W-1A	Power:10w
	Charging Time: 3H	Working time: 4H

2.The best ambient temperature for charging use is between 5°-40°C.

Problem	Problem Causes	Solution
The product heats up during use	Trimming parts attached to debris	<a href="mailto:Support@oneisall.com">Support@oneisall.com</a>
Does not work	The battery is broken	please contact the mailbox: <a href="mailto:Support@oneisall.com">Support@oneisall.com</a>
	Other	please contact the mailbox: <a href="mailto:Support@oneisall.com">Support@oneisall.com</a>
Can't charge	The charging environment temperature is too high or too low	Charging in an environment in 40°C or 50°C

## Q & A

### **Q: Any suggestions before using electric clippers?**

A1: It is recommended to wash and dry the pet first.

A2: It is recommended that if the hair is too long, trim with scissors and comb first.

A3: It is recommended that before and after using the electric hair clipper, a little oil should be dripped on the cutter head for lubrication and maintenance.

### **Q: What does the limit comb 3mm / 6mm / 10mm / 13mm / 16mm 19mm / 22mm / 25mm mean? How to use it?**

A1: You can choose according to your pet's hair retention needs.

### **Q: Can this pet clipper be used on pets' faces? How many decibels is the noise?**

A1: It is not recommended to use the face. The noise is controlled within 55 db.

### **Q: Can it be used while charging? Charging time and working time?**

A1: It can be directly connected to the charger for wired operation.

A2: 3 hours of charging and 4 hours of working.

### **Q: Can Dog clippers be washed?**

A1: The product can be washed under the tap, IPX7 waterproof

**Q: Will the blade get hot?**

A1: After the product has been working for 30 minutes, the temperature of the cutter head is about 36°C (96.8°F), and the temperature is within the acceptable range of somatosensory.

**Q: What should I do if the battery cannot be charged or turned on?**

A1: You can contact our after-sales service as soon as possible, the email is: [Support@oneisall.com](mailto:Support@oneisall.com).

A2: If it is not used for a long time, it is recommended to charge the hair clipper at least once every three months to ensure battery life.

## **Lifetime Replacement Guarantee**

Thanks for your purchase. We always stand behind our quality products, if you ever have any issues with your purchase, please contact us for a free replacement or refund. We will get back to you within 24 hours.



# Contact Us

## WE ARE READY TO HELP

Oneisall offers a standard **2-year** warranty. If you have any issues with your Oneisall product, please do not hesitate to contact us. Be sure to include your proof of purchase, model number, and any relevant photos or videos in your message to expedite the process. Our Oneisall support team is available 7 days a week and will respond to your inquiry within **24 hours**. Thank you for choosing Oneisall.

Please note that the Oneisall warranty does not apply to used products or purchases made from unauthorized sellers. It's important to be aware that the warranty also does not cover consumable parts such as blades, guards, filters, brushes, and similar items. These parts may require regular replacement or maintenance.

✉ [support@oneisall.com](mailto:support@oneisall.com)

📞 +1 877-522-8578 (US) **Mon-Fri** 8am-5pm(PST)

🌐 [www.oneisall.com](http://www.oneisall.com)



@Oneisall Official

# oneisall<sup>®</sup>

**Any problems you have, please contact us :  
support@oneisall.com**