

## Remember To Always:

- Shake bottle thoroughly prior to application of Trissola True+
- Use Nitrile Gloves when applying Trissola True+
- Do not over apply Trissola True+ solution
- Keep Trissola True+ away from contact with the skin
- Keep Trissola True+ away from irritated scalp or open abrasions
- Blow dry the hair 100% dry with cool-medium air before ironing the hair

From dull and frizzy to smooth and shiny in just 90 minutes.

Trissola True+ Restructuring Keratin Treatment eliminates frizz and curls, adding incredible shine for 3-6 months. Coconut oil, the best for natural nutrition of the hair, provides essential proteins for nourishing damaged hair. Keratin improves all layers of the hair, enhancing strength and elasticity, and providing long lasting conditioning effects. Panthenol pro-vitamin B-5 seals the cuticle, adding an abundance of hydration and shine to the hair. A complex blend of fatty acids to enhance and provide moisture retention, improves the hair's overall health.



Extend The Life Of Your Trissola True+ Treatment.

Trissola offers a sulfate, phosphate, and paraben free home care line. The color safe formula also provides UV protection. Trissola's Hydrating Shampoo and Conditioner, Leave-in Conditioner and Intense Hydrating Mask are all infused with protein and fatty acids that hydrate and repair dry to damaged hair.



www.trissola.com

envy  
professional

(877) 408-2234 • Sherman Oaks, CA 91423  
facebook.com/trissola • twitter.com/trissola • youtube.com/trissolousa

## FAQ

### What is Trissola True+?

True+ is a heat-activated restructuring keratin treatment that can be used on every hair type. True+ will leave the hair smooth, frizz-free and manageable with incredible shine for up to six months. Wash and style the same day; no restrictions.

### Do I need to apply True+ Solution panel-by-panel or can I apply it in small sections?

It is better to apply panel-by-panel to ensure quick and comfortable application for both stylist and client. Applying in small sections can create oversaturation of solution, difficulty in blow-drying and excess smoke when ironing.

### Can I apply True+ Solution to the whole head and then blow-dry the hair?

No. It is essential to apply and dry with cool to medium air two panels at a time, to ensure comfort to both you and your client. With this exclusive method, smoke and fumes will be reduced to a minimum and ensure safety. Note: Never use High Heat. Follow the step-by-step technique accordingly.

### What are some key points to remember when applying True+ Solution?

When drying the front panels, blow-dry away from the face to avoid contact with the eyes or skin. As you iron the hair, watch where the smoke is going and move your body position away from it at all times.

### Can I apply hair color right before doing a True+ keratin treatment?

Yes, for optimal results color the hair two days before the treatment. A demi- or semi-permanent may be applied if needed during the service after the ironing procedure. Rinse the hair thoroughly before applying your demi- or semi-permanent color and follow with the pH balancing mask.

### Can True+ Keratin treatment be done on chemically treated, previously straightened or relaxed hair?

Yes, but it is recommended to wait a few days between any chemical services, and complete a test strand first. You will need to adjust the temperature of the iron accordingly, depending on the hair structure.

### Can Trissola True+ be applied onto hair extensions?

Yes, but make sure to keep the solution at least ½ inch away from the bond or tabs, and iron accordingly.

### How often can a client have Trissola True+ done and do I have to redo the whole head each time?

Yes. This treatment is not permanent and will not break the disulfide bonds. You will need to reapply the True+ Solution to all of the hair and pass the iron more times on the base to mid-shaft and less times on the mid-shaft through ends. Too many passes of the iron on the ends of the hair can make them brittle and dry. Please refer to the step-by-step procedure.

before



after

### Is it important to avoid the True+ Solution from coming in contact with the scalp?

Yes, keep the True+ Solution 1/8" to ¼" away from the scalp as this treatment may cause the scalp to become sensitive or itchy. If any irritation occurs, rinse the treatment out immediately.

### When shampooing the hair what are some key points?

Do not manipulate or scrub the scalp with Prep Shampoo. The pH of the shampoo may lead to irritation and sensitivity of the scalp if over manipulated. Shampoo the hair once and leave on for 5 minutes then rinse. You may shampoo twice for coarse and resistant hair. Note: The hair should feel squeaky clean.

### Can I use brushes when blow-drying the hair?

NO. Use fingers only to dry the hair. Brushes will compromise the elasticity of the hair structure, and placing a dryer directly on the brush will create smoke.

### Can I skip Step 3 (the pH balancing mask) or have the client use it at home?

Absolutely not! This step must be done immediately after ironing the hair. It will restore the proper pH balance, sealing in the treatment for longevity, adding shine and ensuring that the hair is healthy.

### Can my clients wash their hair right after Trissola True+, and what shampoo and conditioner should they use?

Yes, clients may wash their hair at any time with no restrictions! For guaranteed results we recommend to use Trissola sulfate, phosphate, and paraben free home care line. Salts and some sulfates found in other hair care lines will wash Trissola True+ treatment out quickly.

### Will swimming in a pool or sea affect the treatment?

Yes. Salt from the sea and chlorine from the pool will strip the hair, reducing the longevity of the treatment. We recommend that clients apply Trissola Conditioner to damp hair for protection before entering the pool or sea. Once they come out of the water, it is important that they rinse the hair thoroughly and cleanse with Trissola Shampoo to remove sea salt or chlorine and follow with Intense Hydrating Mask.

### How often can True+ Keratin treatment be done and how long will the service last?

The treatment will last up to six months depending on porosity, texture and how often your client washes her hair. This treatment can be reapplied when you notice their hair is becoming unmanageable or frizzy.

### Can True+ be used on children, pregnant or nursing women?

No, it is not recommended, and the client should consult a doctor first.

Proper ventilation is always important during any chemical procedure!

True+

Restructuring Keratin Treatment

Step-By-Step

trissola



## Safety First

This product contains Methylene Glycol and it is important that you follow the step by step procedure to create a safe environment for you and your clients.

- **DO NOT MANIPULATE OR SCRUB DURING THE SHAMPOO PROCESS.** Manipulating or scrubbing will create irritation to the scalp.
- **USE THE APPROPRIATE AMOUNT OF PRODUCT ACCORDING TO THE STEP BY STEP BROCHURE.** Oversaturation of product will create difficulty in blow-drying and excess smoke when ironing.
- **APPLY AND DRY 2 SECTIONS AT A TIME.** It is essential to apply and dry two sections at a time to ensure comfort to both you and your client. With this exclusive method, smoke and fumes will be reduced to a minimum and ensure safety. Follow the step by step brochure technique accordingly.
- **DO NOT USE ANY BRUSHES THROUGHOUT THE BLOWDRY PROCEDURE.** Use fingers only to dry the hair. Brushes will compromise elasticity of the hair structure and placing a dryer directly on the brush will create smoke.
- **KEEP BLOWDRYER AWAY FROM HAIR AND SCALP.** Approx 3-6 inches away will eliminate excess smoke. Always blow dry in a downward motion and in one direction, this will help remove frizz and smooth the hair.
- **BLOWDRY ONLY ON COOL TO MEDIUM TEMPERATURE.** Hot temperatures will create smoke on wet hair.
- **IRON ACCORDING TO THE RECOMMENDED TEMPERATURE AND TECHNIQUE AS SHOWN IN THE STEP BY STEP BROCHURE.** This is important for healthy looking hair and consistent results. Too many passes of the iron will make the ends of the hair brittle and dry.
- **BE AWARE OF YOUR BODY POSITIONING FOR THE PROTECTION OF YOU AND YOUR CLIENT.** As you iron the hair, keep smoke away from you and your client. Watch where the smoke is going and keep your body positioned away from it at all times.
- **RINSE, AND APPLY CONDITIONING MASK.** This step must be done immediately after ironing the hair, it will restore the proper pH balance to ensure healthy hair and shine sealing in the treatment for longevity. **CAUTION:** Skipping this step will cause the hair to become brittle and dry!
- **PROPER VENTILATION IS ALWAYS IMPORTANT DURING ANY CHEMICAL PROCEDURE.**

english

## How To Apply



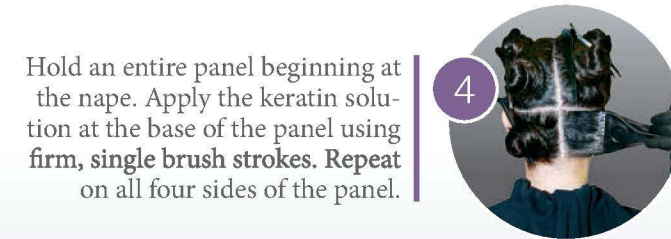
- 1 Apply Step 1 prep shampoo from base through ends, being careful **not** to manipulate the scalp! Leave on for 5 minutes, rinse thoroughly and repeat if necessary. You may shampoo twice for coarse or resistant hair. Note: It is **EXTREMELY** important that the **hair is left squeaky clean, with no residue on the hair.**



Using your hands, blow dry the hair approximately 70%.



- 3 Separate the hair into 6 equal panels and secure each panel with a clip.



Hold an entire panel beginning at the nape. Apply the keratin solution at the base of the panel using **firm, single brush strokes. Repeat** on all four sides of the panel.



- 5 Separate the panel in half and apply the keratin solution to the upper and lower parts of the section.



Use a **fine** tooth comb to comb through the entire panel, from the base through the ends, making sure the whole length is covered by the product. **DO NOT over saturate the hair with the solution!** If there is residue on the comb, you have applied too much. Take the excess solution and apply to the next panel.



- 7 Using the blow-dryer set to **cold - medium** air, dry the two panels completely using your hands, **NO BRUSHES.** It's essential to dry two panels at a time to ensure comfort to both the stylist and the client. With this exclusive method, smoke and fumes are reduced to a minimum. Repeat this process on the remaining panels, completing two at a time.

When applying the keratin solution to the two front panels, make sure the client keeps their eyes closed. Blow dry the panels away from the face to avoid contact with the client's eyes and skin.



- 8 Re-section the hair and secure with a clip. Take thin sections and iron at a 90 degree angle perpendicular to the scalp, to achieve consistent smooth results. Follow the Temperature chart below.



Rinse the hair thoroughly with warm water.



- 10 Apply pH balancing mask on towel dried hair from scalp through ends. Leave on for 5-10 minutes, then rinse thoroughly.

Blow dry and finish as desired. Clients may wash their hair at any time with no restrictions.



### Iron Temperature

Fine/ Damaged Hair	390° F (200° C) 6 times base to mid 3 times porous ends
Medium Hair	410° F (210° C) 8 times base to mid 4 times porous ends
Coarse / Resistant Hair	450 F (230 C) 8 times base to mid 4 times porous ends

When flat ironing it is **VERY** important you follow the technique in step 9. The finer the sections, the smoother the results will be. Pass slowly and steadily over the hair six to eight times. You will notice the cuticle is closed and the hair appears shiny.

español

## Cómo Aplicar

- 1 Lavar el cabello con el champú pre-tratamiento 1 desde la raíz hasta las puntas, sin aplicarlo en el cuero cabelludo. Dejar reposar durante 5 minutos y aclarar bien. Repetir la operación si fuese necesario.
- 2 Secar el cabello hasta 70% con un secador de pelo y usando los dedos.
- 3 Dividir el cabello en 6 partes iguales y atar cada mechón con un clip.
- 4 Coger un mechón partiendo de la nuca. Aplicar la queratina en la base del mechón con una paletina. Repetir la operación en cada lado del mechón.
- 5 Separar el mechón en dos (superior e inferior) y aplicar la queratina en la parte superior e inferior de los dos nuevos mechones.
- 6 Peinar toda la longitud del mechón, desde la raíz hasta la punta, para distribuir uniformemente la queratina. ¡No saturar el cabello con queratina! El excedente de producto se quedará en el peine. Se puede aplicar el exceso de producto en otros mechones para no gastar queratina.
- 7 Secar los mechones con los dedos usando un secador de pelo con aire frío. No se debe utilizar cepillo para el pelo. Para mayor comodidad del estilista y de la clienta, se recomienda secar dos mechones a la vez. Gracias a este método exclusivo, los vapores se reducen al mínimo. Repetir la operación en todos los mechones (siempre de dos en dos).
- 8 Asegurarse de que la clienta mantenga los ojos cerrados cuando se aplica la queratina sobre los mechones de delante. Secar los mechones lo suficientemente lejos de la cara como para evitar el contacto con los ojos y la piel de la clienta.
- 9 Dividir de nuevo el cabello y atar los mechones con clips. Utilizar la plancha sobre pequeños mechones para sellar completamente la queratina. Para un resultado liso y óptimo, la plancha debe colocarse en un ángulo de 90° con respecto al cuero cabelludo. Cabello normal/resistente/rizado: 230 °C (450 °F). Alisar 8 veces y 4 veces en las puntas abiertas. Cabello rubio/fino/sensibilizado: 180-200 °C (350-390 °F). Alisar 6 veces y 3 veces en las puntas abiertas. Repetir la operación para cada mechón.
- 10 Aclarar el cabello con agua tibia.
- 11 Secar el cabello con una toalla y aplicar la mascarilla neutralizante del cuero cabelludo hasta las puntas. Dejar reposar durante 5-10 minutos y aclarar bien.
- 12 Secar y peinar el cabello. Las clientas pueden lavarse el pelo cuando quieran sin ninguna restricción.