



Product Specification

Product Code	615		
Product Name	BOODLES Boosted - Chocolate Speckle		
Packaging Configuration	Single serve	Nett Weight	30g e and 90g e

Product Description

We keep it light taking the crispy, natural goodness of seeds and grains, like quinoa, buckwheat, soy and rice crisps and smothering them in smooth, creamy chocolate. Ooh, and we do it with 50% less sugar*.

Ingredients

Chocolate 53% (Sugar, Cocoa Solids [35%], Coconut Milk Powder, Chicory Root, Sunflower Lecithin, Natural Vanilla Flavour), Grain and Seed Mix 38% (Cocoa **Soy** Crisp, Cocoa Rice Crisp, Quinoa Crisp, Buckwheat), Dark Choc Chips (**Soy**), Sprinkles 2% (Carotene, Anthocyanin, Curcumin, Chlorophyll)

Nutritional Information

Serve Size	30g	
	Per Serve	Per 100g
Energy	624 kj	2079 kj
Protein	5.1 g	17.0 g
Fat Total	7.1 g	23.6 g
Fat Saturated	4.6 g	15.3 g
Carb Total	16.5 g	55.0 g
Sugar	8.6 g	28.6 g
Sodium	72 mg	242 mg
Fibre	0.5 g	1.7 g
Gluten	ND	ND

Analytical Limits

SPC	<10,000 cfu/g
Yeast	<100 cfu/g
Mould	<100 cfu/g
Salmonella	ND/25g
E.coli	<10 cfu/g
Water Activity	≤0.65

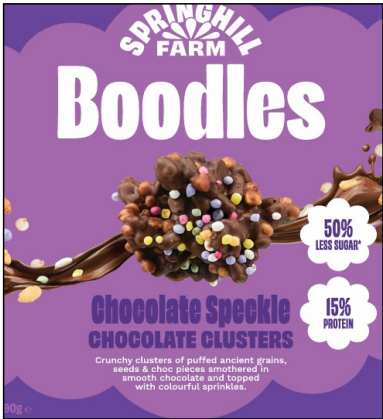
Allergen Declaration

Contains

SOY

May be Present

Tree Nuts, Peanut, Milk, Egg, Sesame



Claims	Source of Protein, 15% Protein, Gluten Free, 50% Less Sugar, 100% Plant Based, 100% Natural ingredients, Aussie Made.
Shelf Life	12 Months
Storage and Handling	Cool storage, ambient display
Country of Origin	Made in Australia from Australian imported ingredients

Issue Date	10/04/2025	Version	3
------------	------------	---------	---