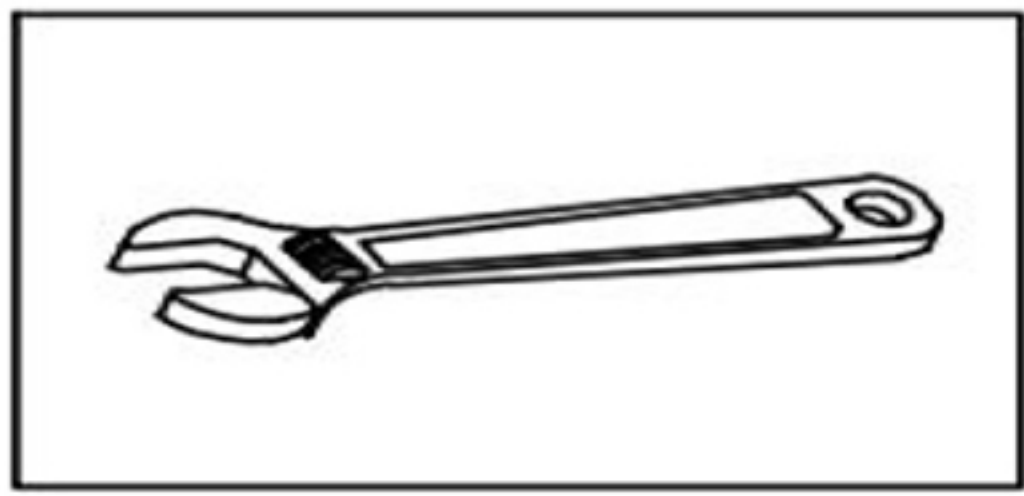
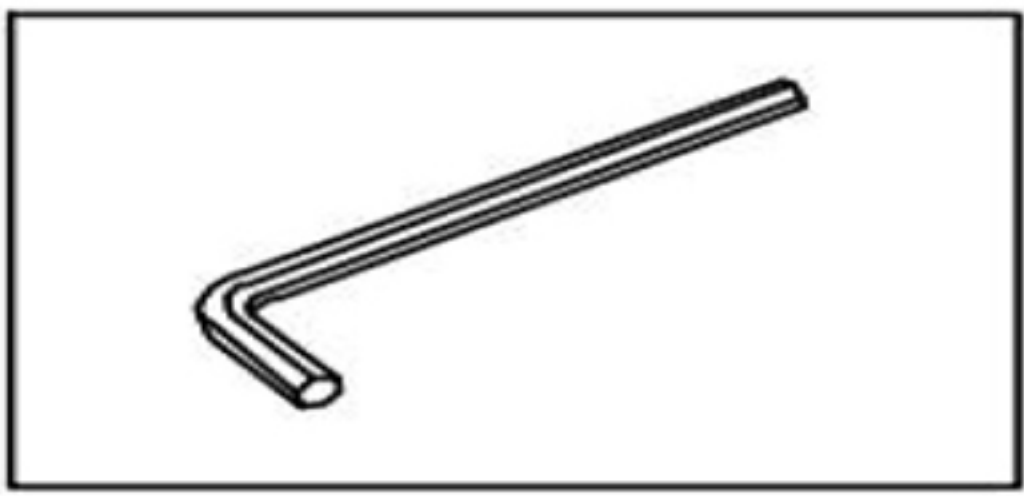


# Deck Mounted Bathtub Faucet Installation

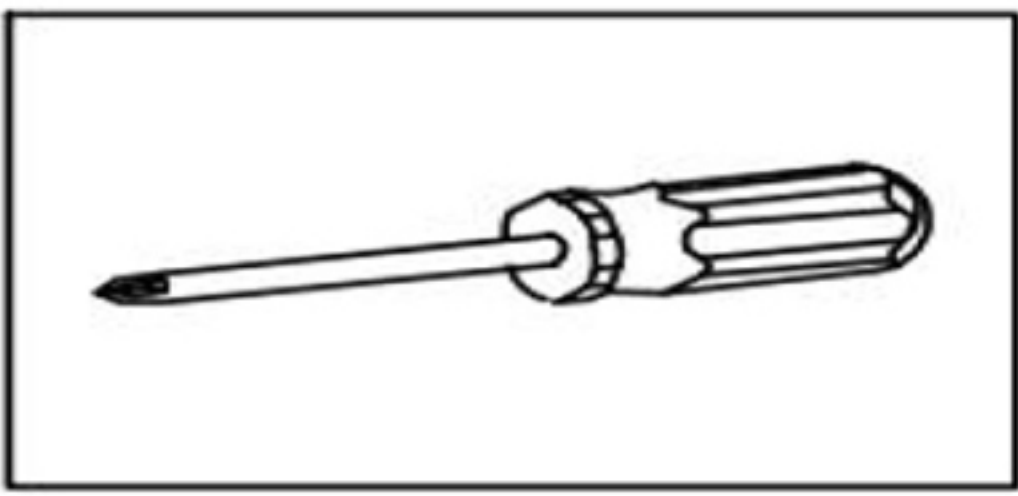
## INSTALLATION MANUAL Tools You Will Need:



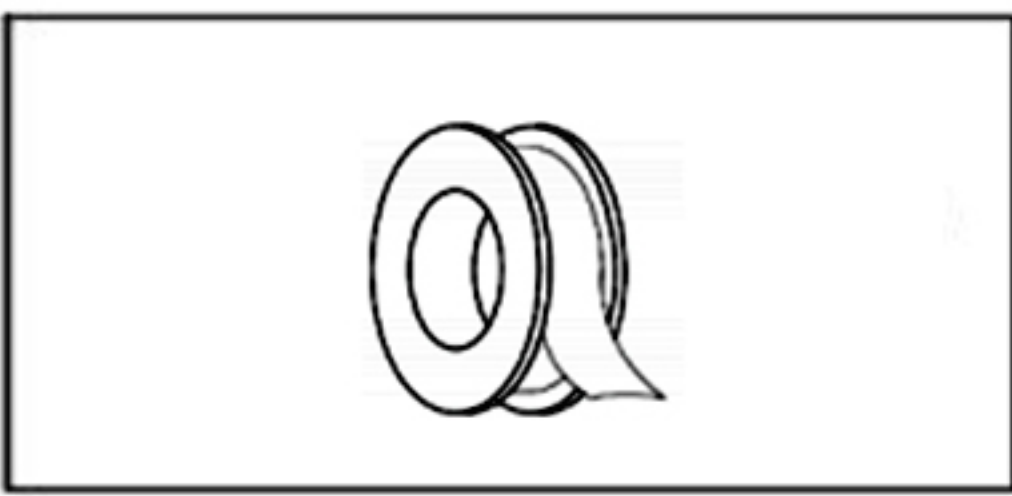
Adjustable Wrench



Allen Key



Philips Screwdriver



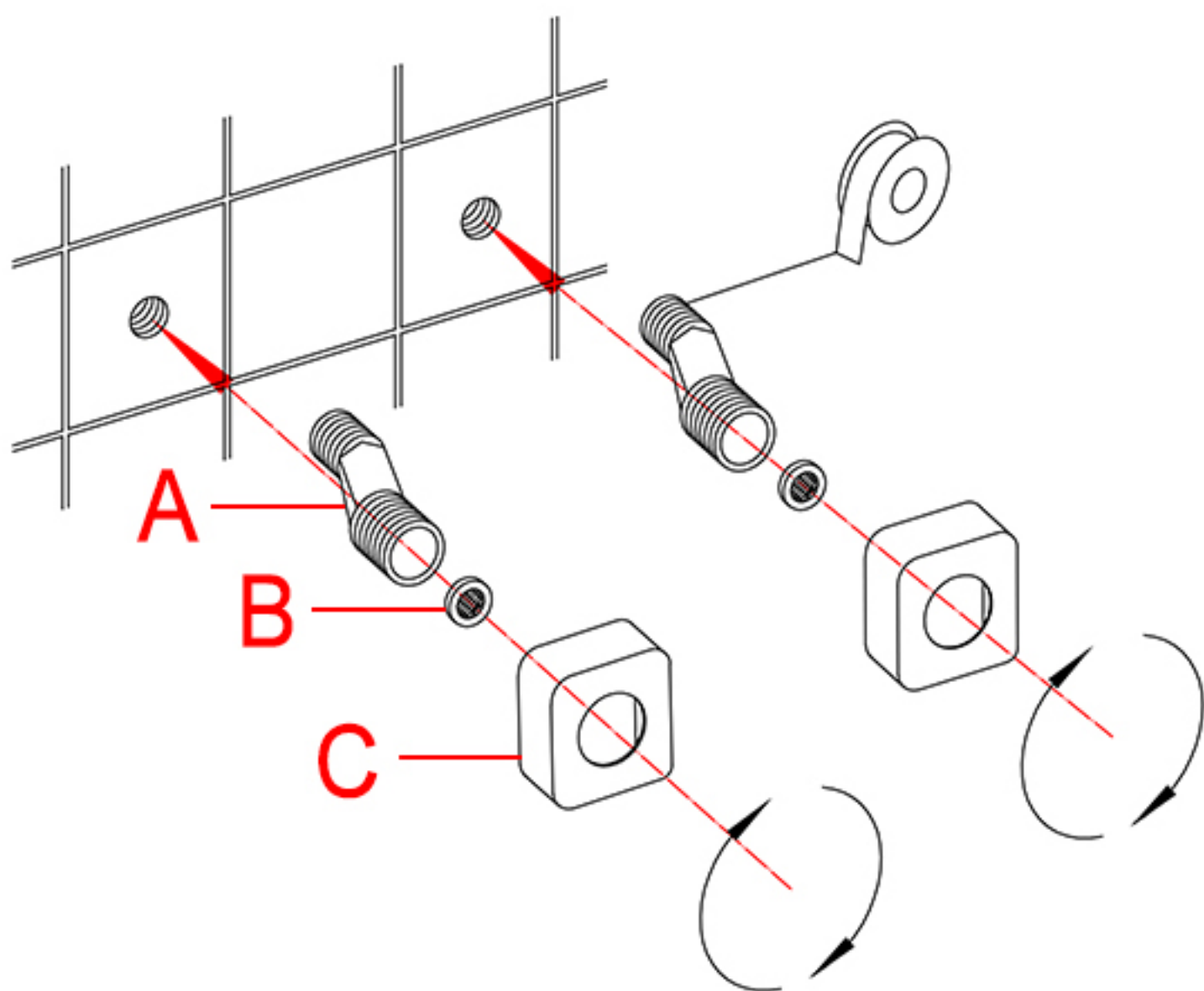
Teflon Tape

### Before the Installation

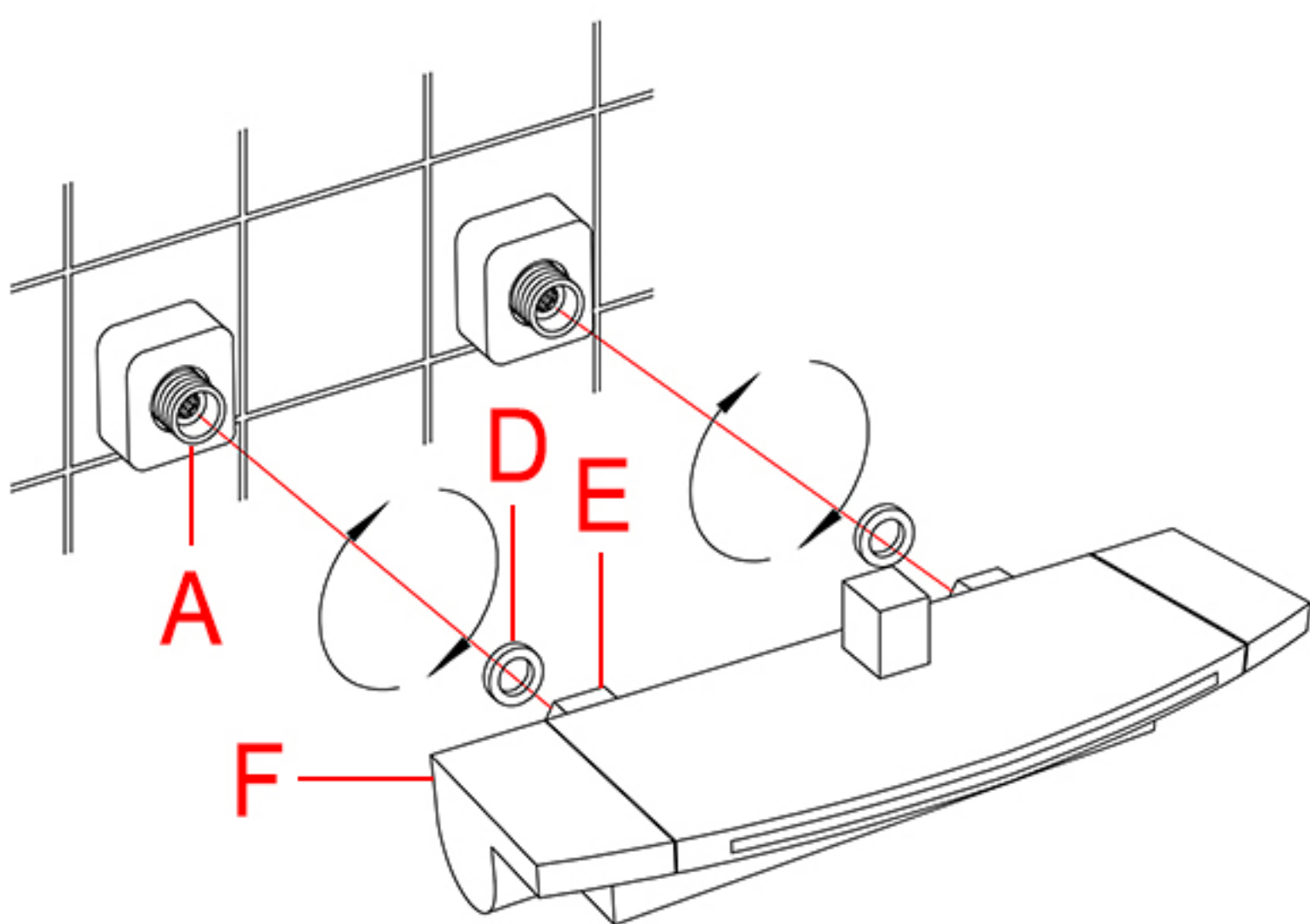
1. Check the package and confirm all parts are included. If any part is missing or damaged, please contact us.
2. Do not disassemble the main body, as it has been installed & commissioned correctly & precisely before leaving the factory.
3. Shut off the main water supply prior to beginning installation.
4. Do flush the water supply lines to remove any dirt and debris before installation **(IMPORTANT)**.
5. Make sure to connect the hot/cold inlet pipe correctly. If standing in front, connect hot water pipe to the left and cold water pipe to the right.
6. After the installation, check for leaks and make sure every joint is safely sealed.

### Cleaning and Maintenance

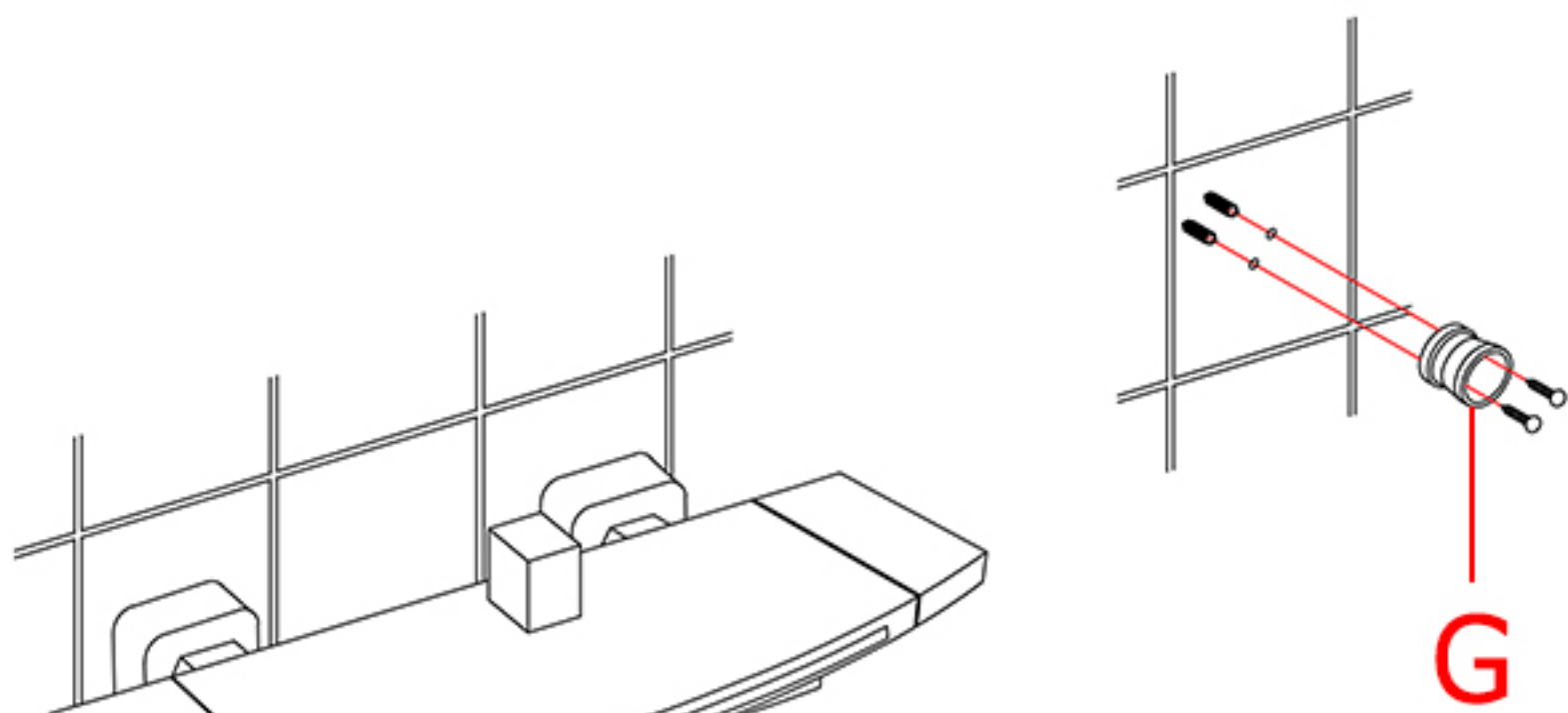
1. Rinse with clean water and dry with a soft cloth.
2. Do not use any detergent, acid, polisher, abrasives, or harsh cleaners.
3. Do not use cloth with a coarse surface.



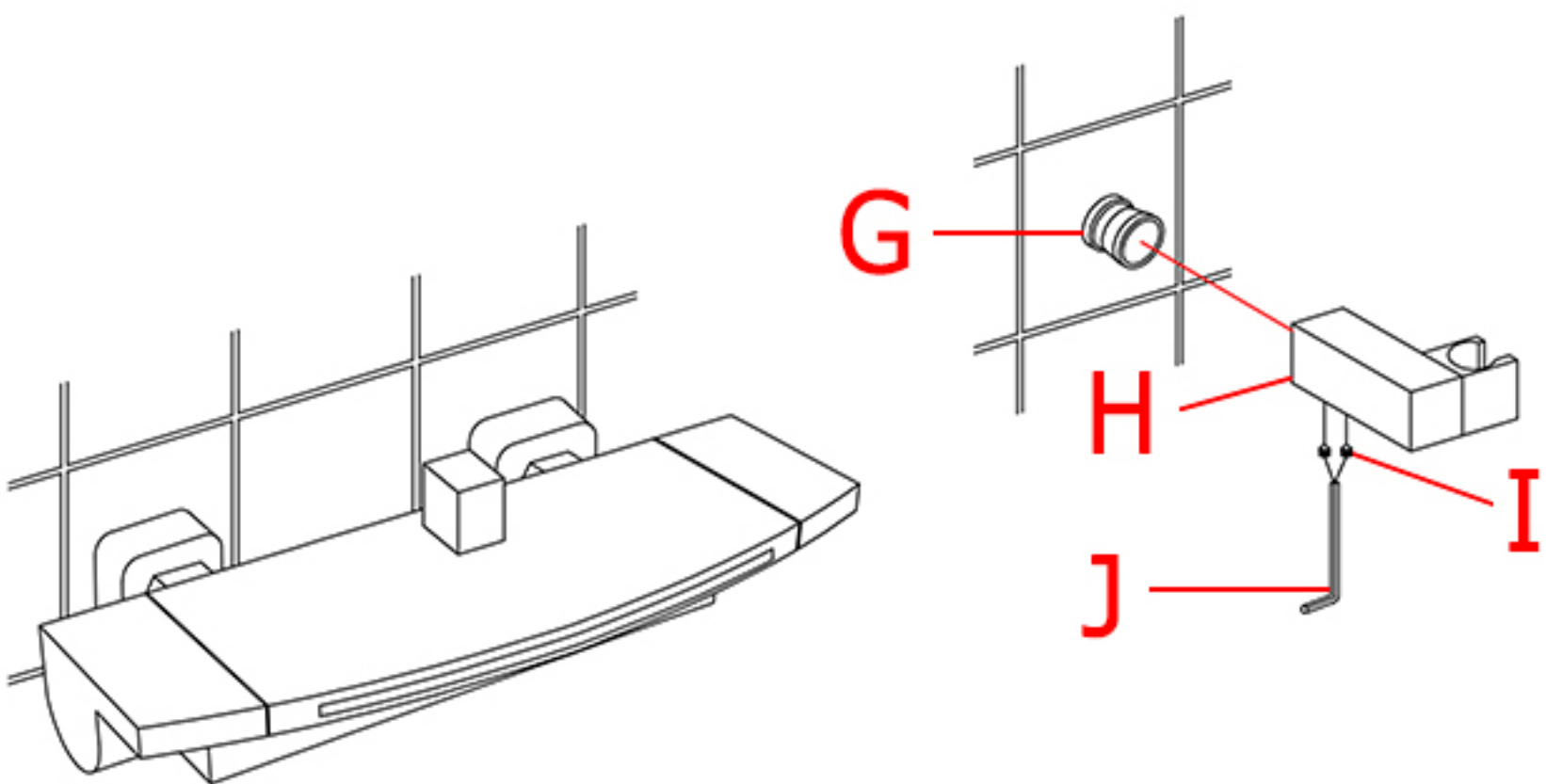
1. Wrap the threads of the s-unions (A) with Teflon tape. Screw the s-union into the female fittings of water supplies (Make sure that the s-unions are level). Add the screen washers (B) to s-unions (A) and place the escutcheons (C) onto the s-unions (A).



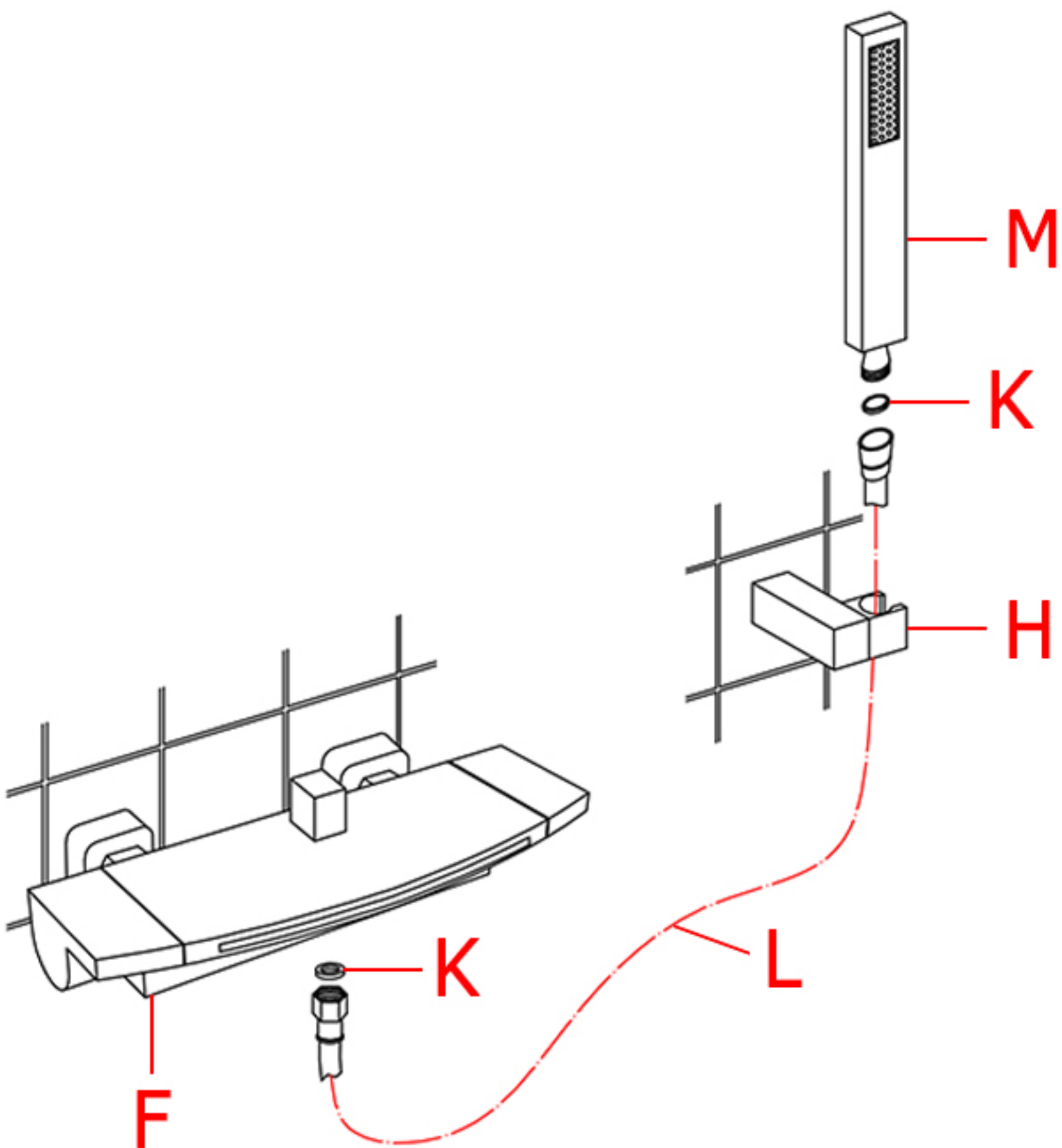
2. Add rubber washers (D) to the connector nuts (E) of the valve body (F). Thread and tighten the connector nuts (E) onto the s-unions (A).



3. Fix the mounting bracket (G) to the wall with screws.



4. Attach the hand shower holder (H) to the mounting bracket (G) and tighten the set screws (I) with Allen key (J).



5. Turn on the water supply and let water run for at least 1 minute to clear any debris. Connect hose (L) to the valve body (F) and to the hand shower (M) and make sure rubber washers (K) is added to both ends. Place the hand shower (M) in the hand shower holder (H).