



DISTINCTIVE KITCHEN CABINETS

How-to-Measure Guide For New Kitchen Cabinets



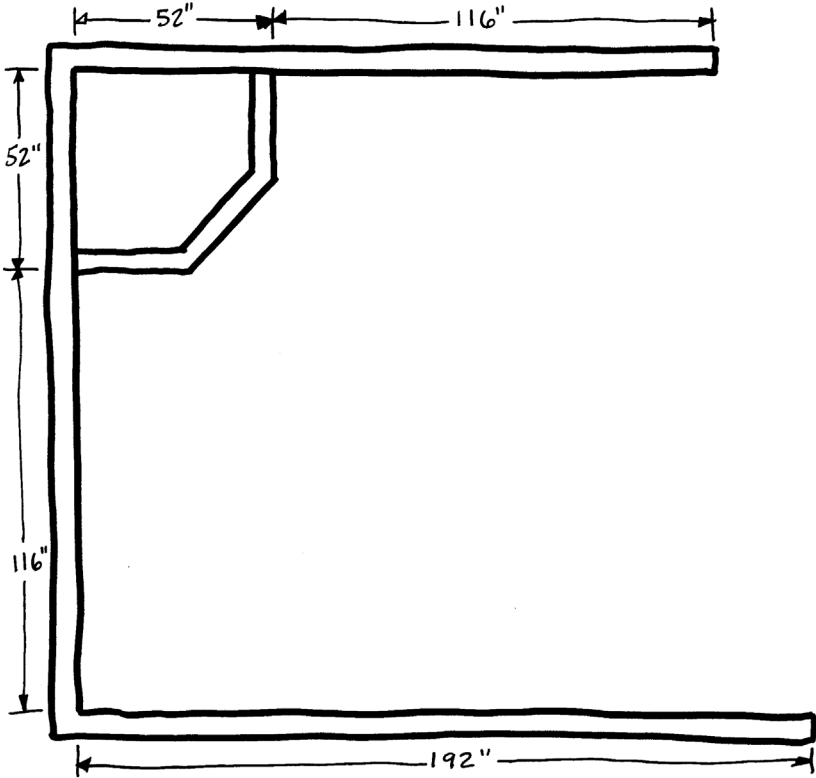
DISTINCTIVE KITCHEN CABINETS

DistinctiveKitchenCabinets.com

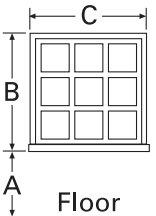
STEP-BY-STEP MEASURING GUIDE

1 The following step-by-step instructions will make measuring for your new project a snap! All that's required is paper, pencil and a tape measure. Accuracy is the key to a successful project, so take your time and be sure to double check all measurements.

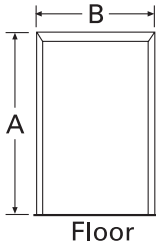
Begin in any corner of the room, with tape measure at waist height, and measure to an adjacent wall. Always measure in inches only, not feet and inches! Record your first measurement and continue around the room measuring all walls where cabinetry will be installed. Once completed, draw the floor plan and add your measurements like the example below.



2 Now, measure all doors, windows and wall openings. Any trim around doors, windows or openings is considered part of the opening, and should be included in your measurement. Record your measurements (in inches) on the charts provided below for reference in the next step.



WINDOW MEASUREMENTS			
WINDOW#	DIMENSION "A"	DIMENSION "B"	DIMENSION "C"
#1			
#2			
#3			
#4			

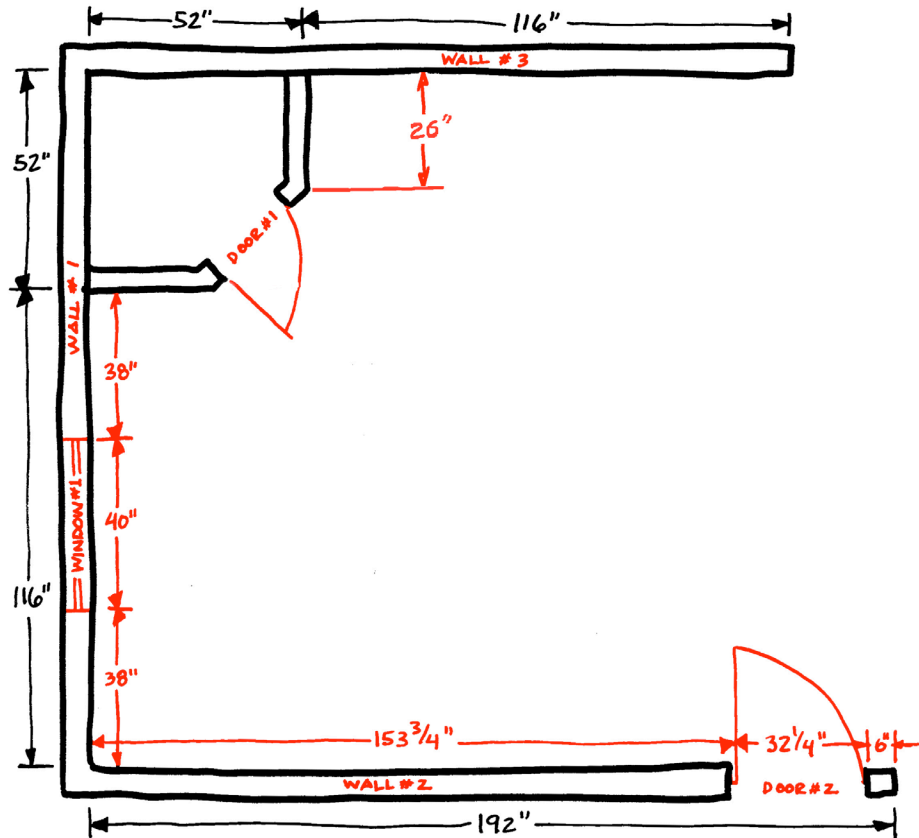


DOOR MEASUREMENTS		
DOOR#	DIMENSION "A"	DIMENSION "B"
#1		
#2		
#3		
#4		

STEP-BY-STEP MEASURING GUIDE

3

The next step is to locate all openings on your floor plan. Measure from the wall corner to outside edge of opening trim and locate on drawing. Add opening dimension and then, measure from outside edge of trim to adjacent wall. Repeat process for all openings. Identify all openings from the charts in step 2 and then label wall numbers for future elevation drawing reference. When placing doors on drawing, be sure to indicate which way the door opens.



4

ABOUT YOUR CEILING HEIGHT:

Floor to ceiling height: _____

Straight Vaulted Soffit*

If there is a soffit*, will it remain? Yes No

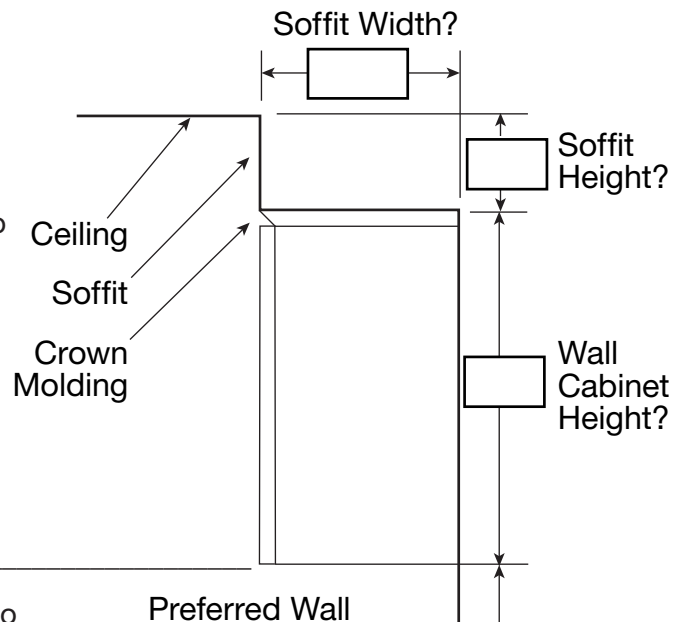
If yes, please mark dimensions on the diagram to the right.

*A soffit, also called a bulkhead, is the area between the top of a wall cabinet and the ceiling.

FLOOR TYPE:

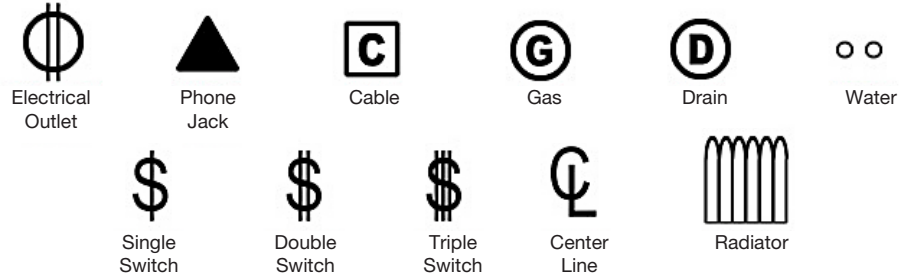
Tile Vinyl Wood Other _____

Will you keep your current floor? Yes No

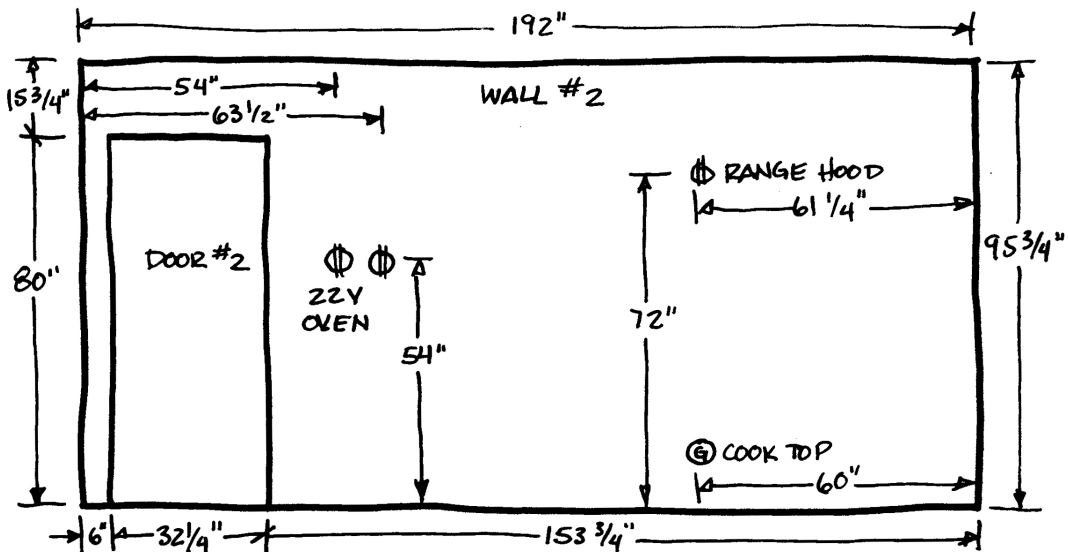
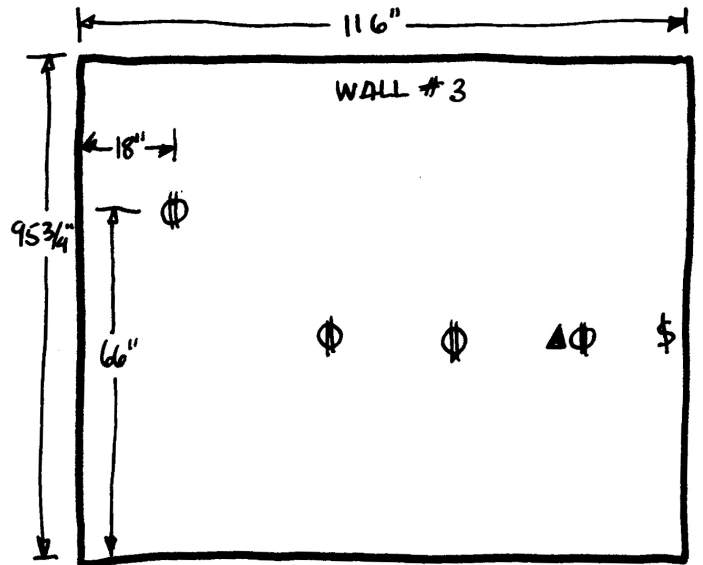
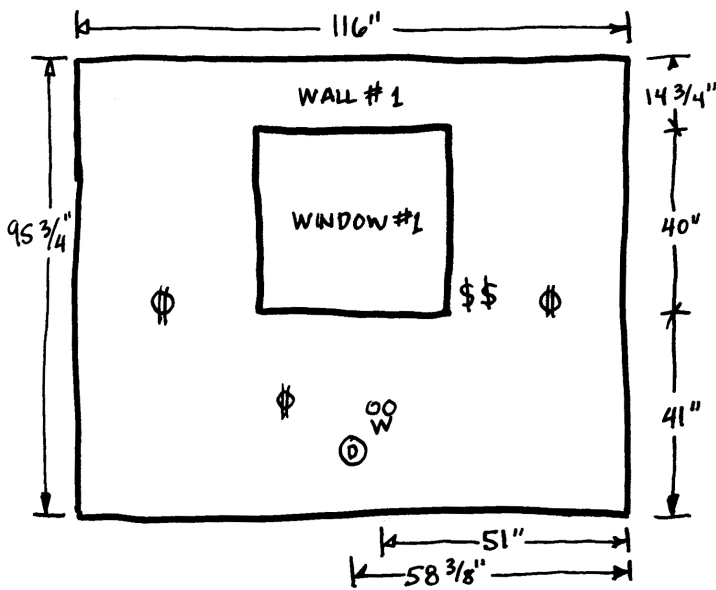


STEP-BY-STEP MEASURING GUIDE

5 Now, draw an elevation of each wall and locate all openings. Be sure to include the ceiling height and show soffits (boxed build-down from ceiling), if you have them or plan on adding them. For easy identification, use the symbols shown below to locate water lines, drain lines, electrical outlets/switches, etc.



Enter the centerline location dimensions for any applicable utility services and finally, identify any wall areas that are not to receive cabinetry or any obstructions that may complicate design.



That completes the measuring requirements. Please provide:

1. Floor plan & elevation drawings of your space
2. Photos of your space to help our designers visualize what they're working with.
3. Photos of any ideas you would like incorporated into your new design.

***PLEASE PROVIDE THEM TO US BY:**

- 1) Visiting our website: DistinctiveKitchenCabinets.com
- 2) Click on the **FREE DESIGN & QUOTE PAGE**
- 3) Click on the **RED** button **"FREE DESIGN AND QUOTE REQUEST FORM"**
- 4) Answer a few questions and upload your information at the bottom of the form.

***You will also be able to upload your measurements, photos of your space & photos of ideas through the form.**

****It only takes a few minutes to complete & your project will go directly to one of our designers!***

**DKC****DISTINCTIVE KITCHEN CABINETS**