

Part List

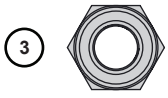
DO NOT RETURN PRODUCT IF YOU ARE MISSING PARTS. PLEASE CALL: 1 (800) 972-6130

No.	Part #	Qty	Description
1	1006084	5	Bolt, HexHd 1/4 x 3/4 SS
3	1005198	6	Nut, NylonLock, SS: 1/4"-20
4	1017543	1	Plate, Linkage
5	1017501	1	Bracket, Linkage
7	1017340	1	Control Linkage Assembly
8	1001255	3	Bolt, 1/4-20 x 1" HexHd,SS
9	1017551	1	Bolt, HexHd 1/4-20 x 1.50
10	1017503	1	Spring, Gate
11	1008431	1	Rate Gate Link, Formed
12	1017580	1	Plate, Hopper Bottom
13	1000203	1	Hopper Bottom Bearing
14	1004880	4	Bolt, HexHd 1/4 x 1/2 SS
15	1001521	2	Guide, Rate Gate/Accuway
16	1000210	1	Rate Gate
20	1000215	1	Pine Tree Clip
21	1000211	1	Dial Mount
22	1000213	1	Dial, Plastic
23	1000198	2	Felt Washer
24	1000051	1	Spreading Spinner
25	1000844	1	Agitator Blade
26	1017420	1	Spinner Shaft, 50 Lb
27	1000054	1	Roll Pin 1/8 x 7/8
28	1001301	2	3/8 Spinner Shaft Bushing
29	1001518	1	Pinion Gear - Metal
30	1001299	2	Gearbox Bushing 5/8"
31	1018126	1	Axle, Wheel SS
32	1001304	1	Dowel Pin, 3/16 x 1, SS
33	1001516	1	Bevel Gear-metal
34	1005389	1	Nylon Spacer, Pin Retain
35	1005336	1	Gear Box Cover Front
36	1005368	1	Grease Zerk 1/4 Drive IN
37	1017710	8	Bolt, PhlpHd 10-24 x 5/8" SS
38	1005337	1	Gear Box Cover Rear
39	1001308	8	Nut, NylonLock, #10-24 SS
40	1000225	2	Handle Grip
41	1019217	1	Weldment, Handle, SS
42	1000000	1	On-off Decal
51	1017502	1	Linkage
52	1019222	1	Handle, Lower, SS
57	1017504	2	Cap, Plastic
58	L-1744-6	1	Label, Serial#, Spyker
59	1019219	1	Medium Frame Weldment, SS
60	1019223	1	Stand, Med Frame, SS
63	1001607	2	Wheel, 13"
64	F-283	2	Bearing, Axle
67	1019225	1	Manual

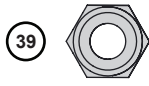
No.	Part #	Qty	Description
68	1017577	1	Cover, Hopper 50#
69	1017545	1	Screen, 50#
70	1019224	1	Hopper, 50# Blue
72	1017709	1	Decal Spyker Ice
74	1000053	1	Roll Pin, 1/8 x 3/4
75	1017730	1	Spacer, Plastic
77	1017776	1	Support Bracket
78	1001273	1	Hairpin (299 Agitator), SS
79	1017626	3	Label, Reflective
80	1019349	1	Deflector
81	1018993	4	Spacer, Plastic
82	1019231-LH	1	Mounting Bracket, LH
83	1019231-RH	1	Mounting Bracket, RH
84	1018708	4	Stiffener Plate
86	1018738	2	Spring
87	1018740	2	External Tooth Lockwasher
88	1004975	2	Nut, 1/4-20 Hex Flange
89	1007386	2	Bolt, Carriage, SS: 1/4"-20 x 3/4"
90	1019001	2	Bolt, HexHd: 1/4"-20 x 1-3/4"

No.	Part #	Qty	Description
92	1018577	1	Parts Bag
2	1001554	9	Washer, Nylon
3	1005198	23	Nut, NylonLock 1/4-20, SS
6	1001533	2	Nylon Flange Bushing
43	1001351	7	Washer, 1/4" SS
44	1007888	4	Bolt, HexHd, 1/4 x 2-1/4 SS
45	1017371	1	Bolt, HexHd, 1/4 x 3-1/4 SS
46	1001262	10	Bolt, HexHd, 1/4 x 1-1/2 SS
47	1017617	1	Plate, Guide
48	1007828	2	Knob, Handle
49	1017346	1	Spring, Control Lever
50	1017345	1	Lever, Control
53	1001315	4	Nut, NylonLock 5/16-18
54	45M1111SS	6	Washer, Flat, SS-5/16"
55	1008811	2	Bolt, Hex 5/16-18 x 1 SS316
56	1017374	2	Bolt, Carriage, 5/16 x 3/4
61	1005414	1	Rue Ring Locking Pin
62	1001350	5	Washer, Flat SS
65	1001274	1	Clevis Pin, 3/16 x 1-3/4
66	1019596	1	Cotter Ring
73	1017344	1	Control Lever Stop
76	1017725	2	Lock Washer Ext/Int Tooth 5/16

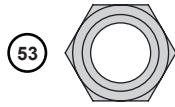
DO NOT RETURN PRODUCT IF YOU ARE MISSING PARTS. PLEASE CALL: 1 (800) 972-6130



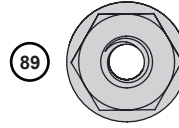
3 Nut: Nylon Lock,
1/4" - 20 (x29)
1005198



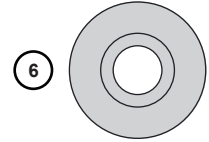
39 Nut: Nylon Lock,
SS - #10-24 (x8)
1001308



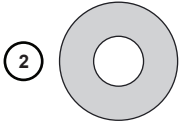
53 Nut: Nylon Lock,
5/16" - 18 (x4)
1001315



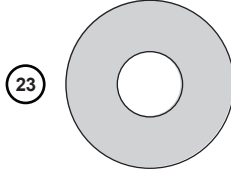
89 Nut: Hex Flange
1/4" - 20 (x2)
1004975



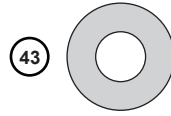
6 Flange Bushing
Nylon (x2)
1001533



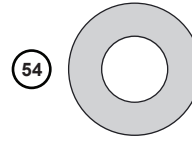
2 Washer,
Nylon (x10)
1001554



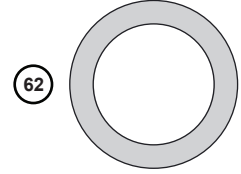
23 Washer,
Felt (x2)
1000198



43 Washer, SS
1/4" (x7)
1001351



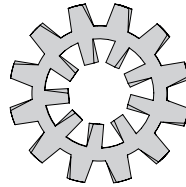
54 Washer, Flat
SS, 5/16" (x6)
45M1111SS



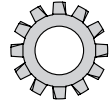
62 Washer, Flat
SS (x5)
1001350

*Exterior circumference of washers can vary. These dimensions are a measurement of the internal diameter of the washer.

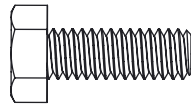
76 Washer, Lock; 5/16
External/Internal (x2)
1017225



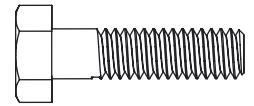
87 Washer, Lock; SS, 1/4
(8-18) External Tooth (x2)
1018740



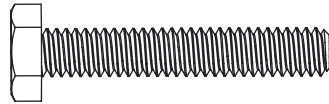
1 Bolt: Hex Head, SS
1/4 x 3/4" (x5)



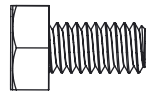
8 Bolt: Hex Head, SS
1/4" - 20 x 1" (x3)



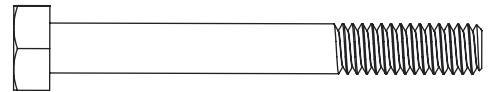
9 Bolt: Hex Head
1/4-20 x 1.50 (x1)



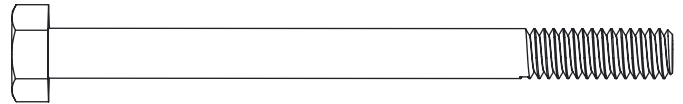
14 Bolt: Hex Head, SS
1/4 x 1/2" (x4)



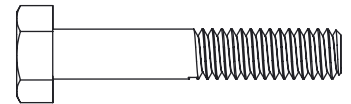
44 Bolt: Hex Head, SS, 1/4 x 2-1/4" (x4)



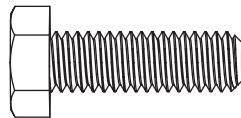
45 Bolt: Hex Head, SS, 1/4 x 3-1/4" (x1)



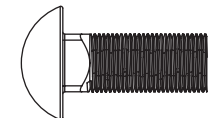
46 Bolt: Hex Head, SS, 1/4 x 1-1/2" (x10)



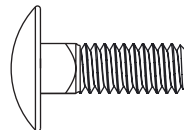
55 Bolt: Hex Head, SS
5/16-18 x 1" (x2)



56 Bolt: Carriage
5/16 x 3/4" (x2)



90 Bolt: Carriage, SS
1/4" - 20 x 3/4" (x2)



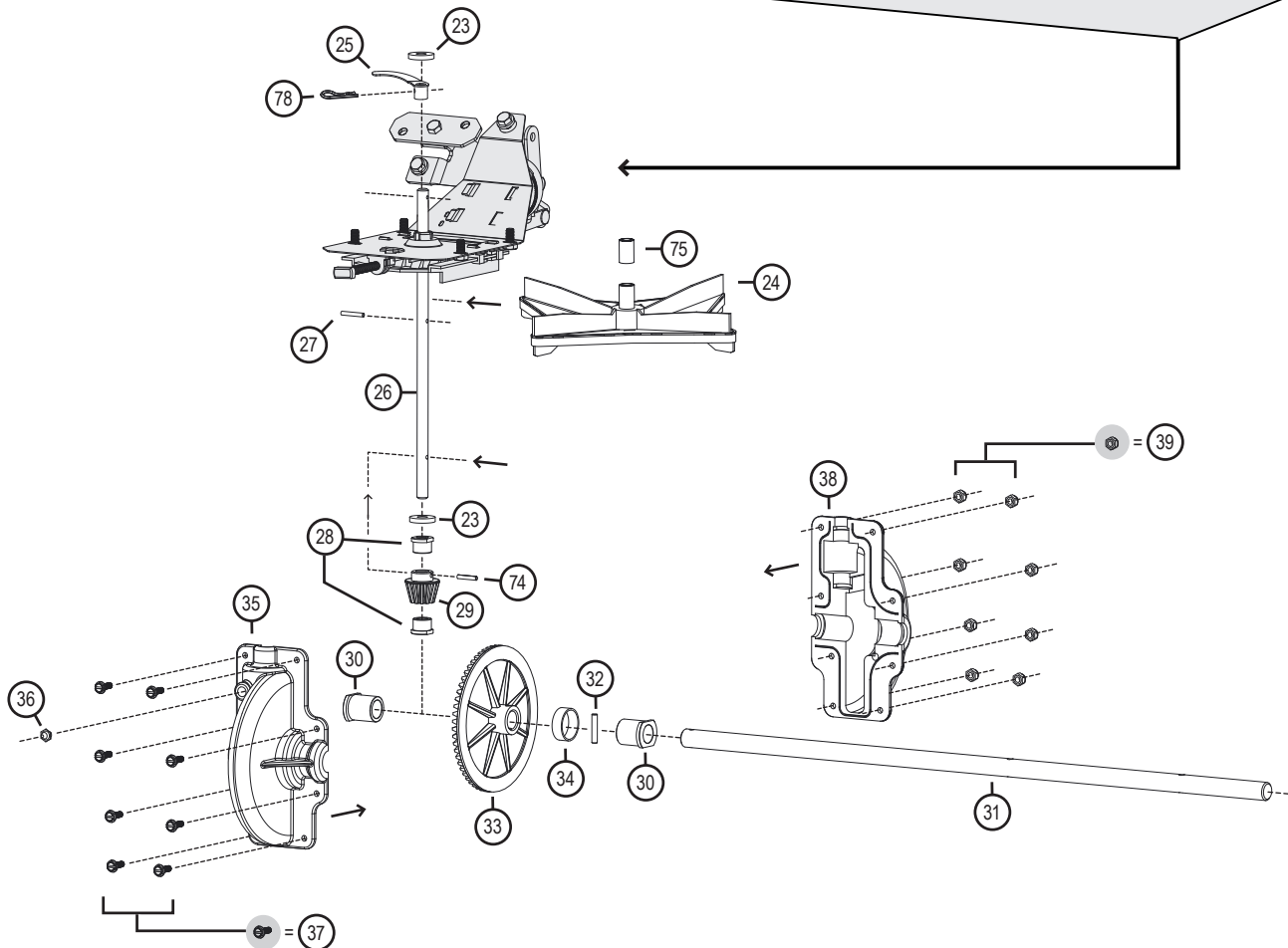
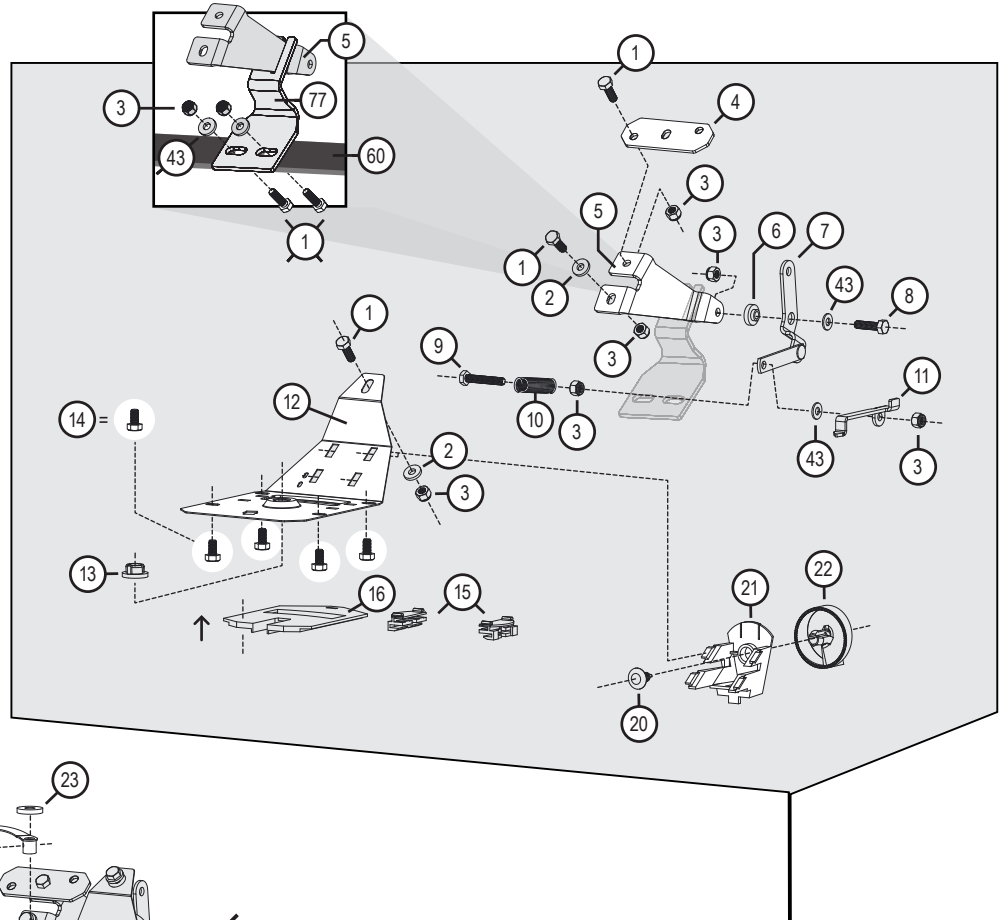
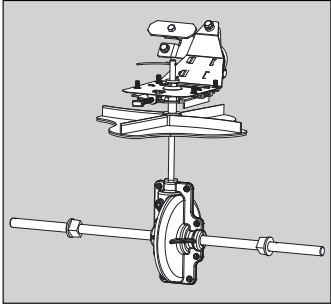
91 Bolt: Hex Head, SS
1/4" - 20 x 1-3/4" (x2)



Part Explosions

DO NOT RETURN PRODUCT IF YOU ARE MISSING PARTS. PLEASE CALL: 1 (800) 972-6130

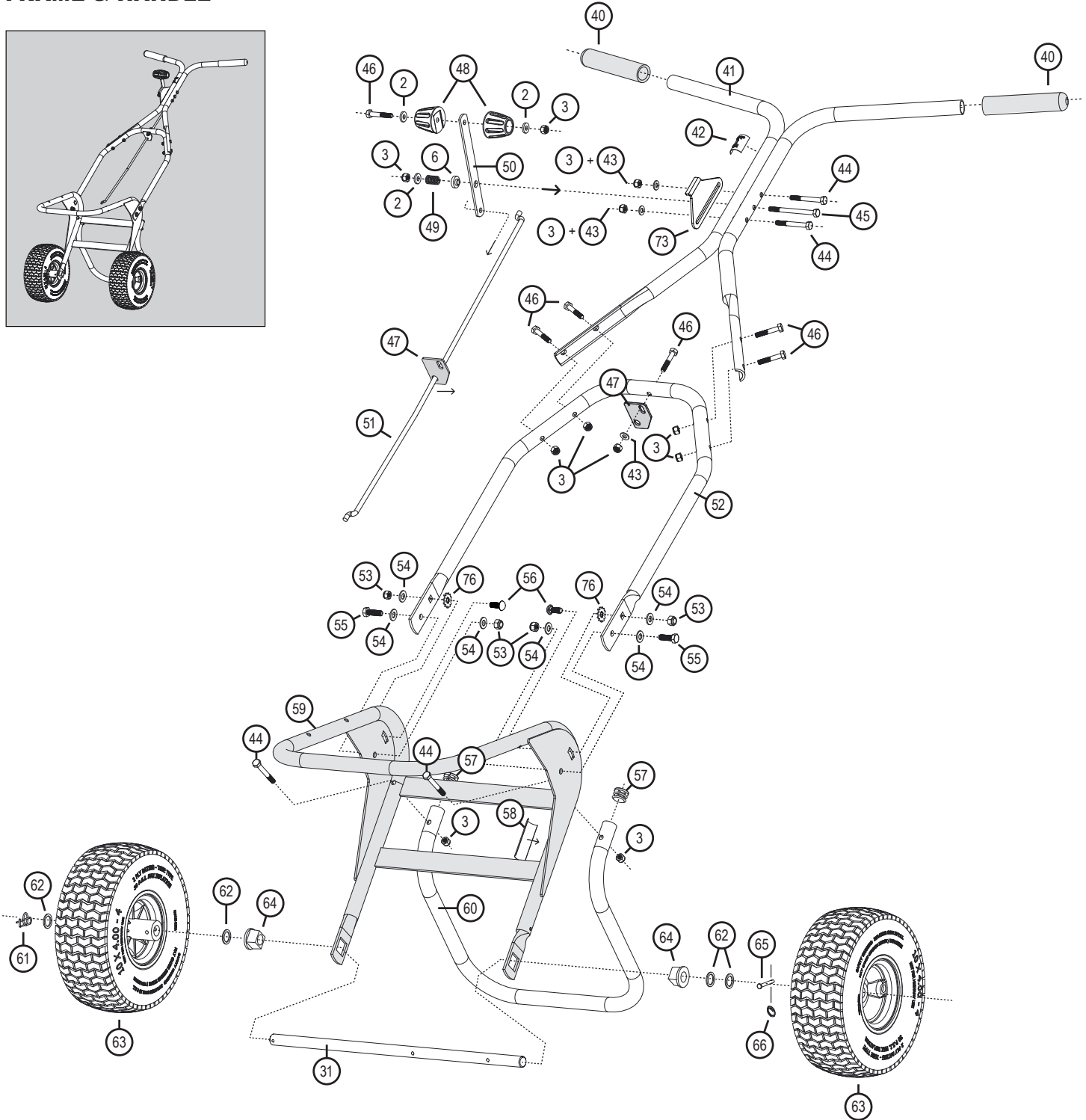
RATE GATE + AXLE / SPINNER



Part Explosions

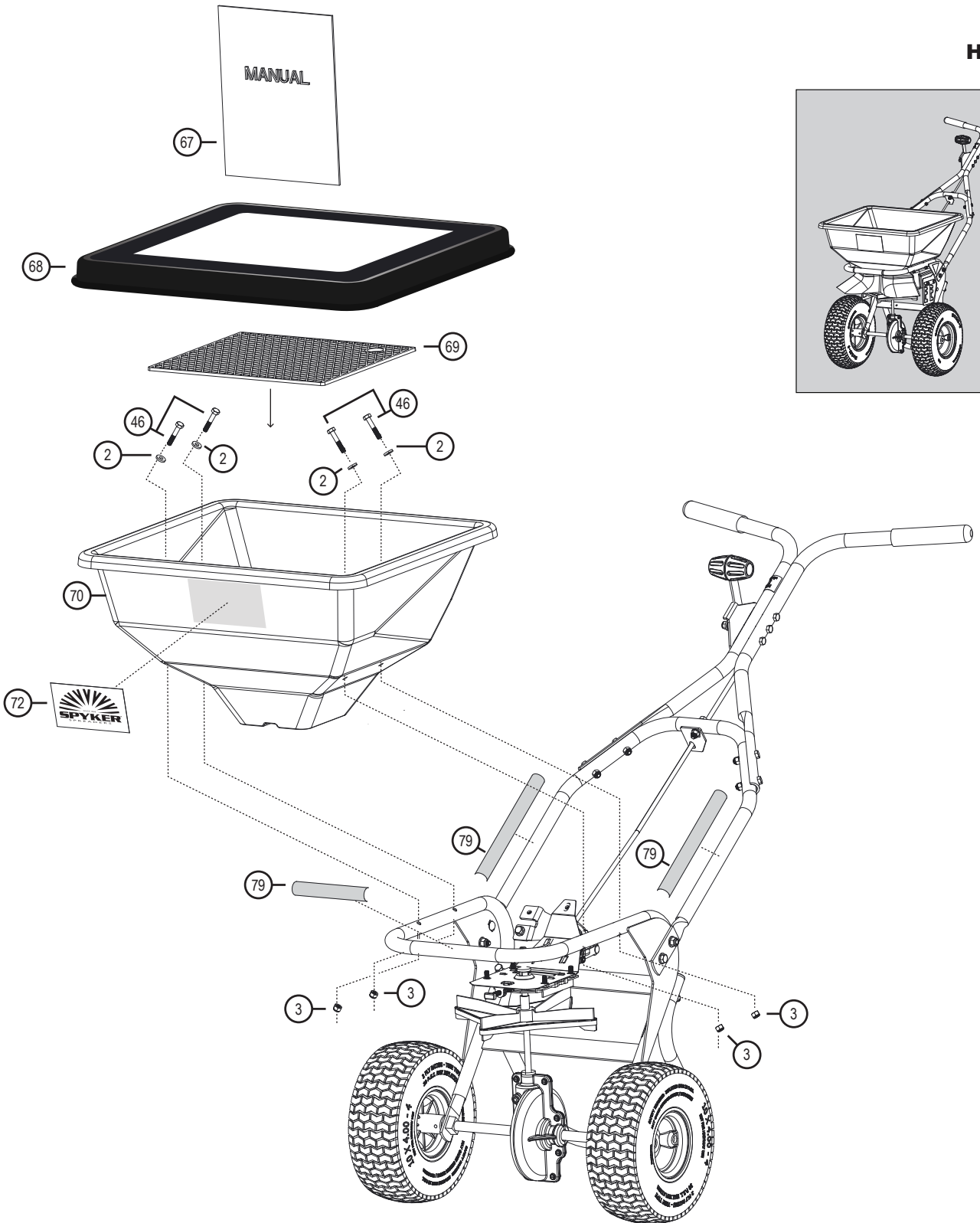
DO NOT RETURN PRODUCT IF YOU ARE MISSING PARTS. PLEASE CALL: 1 (800) 972-6130

FRAME & HANDLE



DO NOT RETURN PRODUCT IF YOU ARE MISSING PARTS. PLEASE CALL: 1 (800) 972-6130

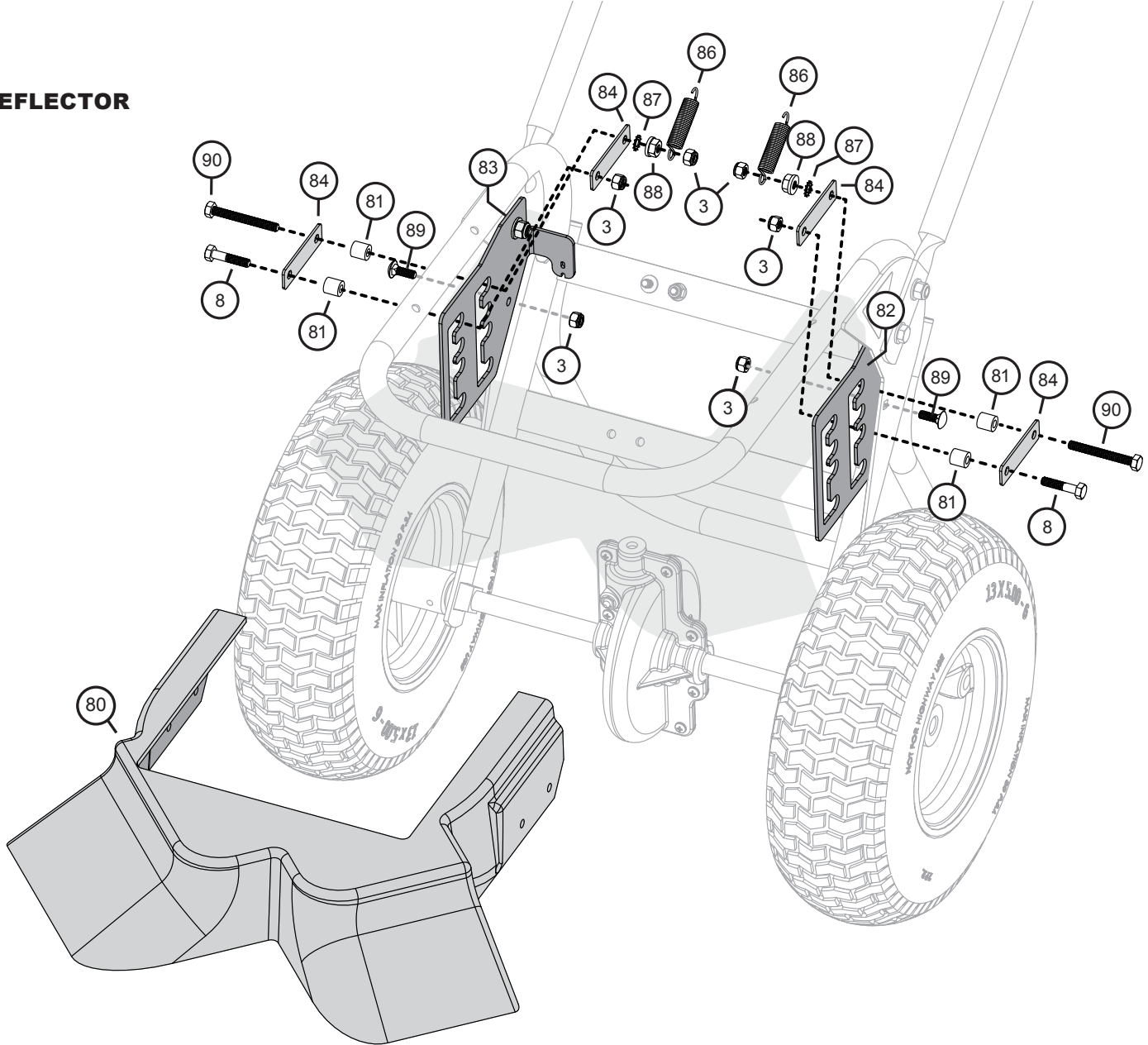
HOPPER



Part Explosions

DO NOT RETURN PRODUCT IF YOU ARE MISSING PARTS. PLEASE CALL: 1 (800) 972-6130

DEFLECTOR



No.	Part #	Qty	Description
3	1005198	6	Nut, NylonLock, SS: 1/4"-20
8	1001255	2	Bolt, HexHd, SS: 1/4"-20 x 1"
80	1019349	1	Deflector
81	1018993	4	Spacer, Plastic
82	1019231-LH	1	Mounting Bracket, LH
83	1019231-RH	1	Mounting Bracket, RH

No.	Part #	Qty	Description
84	1018708	4	Stiffener Plate
86	1018738	2	Spring
87	1018740	2	External Tooth Lockwasher
88	1004975	2	Nut, 1/4-20 Hex Flange
89	1007386	2	Bolt, Carriage, SS: 1/4"-20 x 3/4"
90	1019001	2	Bolt, HexHd: 1/4"-20 x 1-3/4"