

# Part List

DO NOT RETURN PRODUCT IF YOU ARE MISSING PARTS. PLEASE CALL: 1 (800) 972-6130

No.	Part #	Qty	Description
1	1006084	5	Bolt, HexHd 1/4 x 3/4 SS
4	1017543	1	Plate, Linkage
5	1017501	1	Bracket, Linkage
7	1017340	1	Control Linkage Assembly
8	1001255	1	Screw 1/4-20 x 1" HexHd,SS
9	1017551	1	Bolt,HexHd 1/4-20 x 1.50
10	1017503	1	Spring, Gate
11	1008431	1	Rate Gate Link, Formed
12	1017580	1	Plate, Hopper Bottom
13	1000203	1	Hopper Bottom Bearing
14	1004880	4	Bolt, HexHd 1/4 x 1/2 SS
15	1001521	2	Guide, Rate Gate/Accuway
16	1000210	1	Rate Gate
17	1001523	1	Accuway Diffuser
18	1001525	1	Accuway Adj. Nut Bracket
19	1001526	1	Accuway Adjustment Screw
20	1000215	1	Pine Tree Clip
21	1000211	1	Dial Mount
22	1000213	1	Dial, Plastic
23	1000198	2	Felt Washer
24	1000051	1	Spreading Spinner
25	1000223	1	Agitator Wire
26	1017420	1	Spinner Shaft, 50 Lb
27	1000054	1	Roll Pin 1/8 x 7/8
28	1001301	2	3/8 Spinner Shaft Bushing
29	1001518	1	Pinion Gear - Metal
30	1001299	2	Gearbox Bushing 5/8"
31	1018126	1	Axle, Wheel SS
32	1001304	1	Dowel Pin, 3/16 x 1, SS
33	1001516	1	Bevel Gear-metal
34	1005389	1	Nylon Spacer, Pin Retain
35	1005336	1	Gear Box Cover Front
36	1005368	1	Grease Zerk 1/4 Drive IN
37	1017710	8	Bolt, PhlpHd 10-24 x 5/8" SS
38	1005337	1	Gear Box Cover Rear
39	1001308	8	Nut, NylonLock, #10-24 SS
40	1000225	2	Handle Grip
41	1017616	1	Weldment, Handle
42	1000000	1	On-off Decal
51	1017502	1	Linkage
52	1017614	1	Handle, Lower
57	1017504	2	Cap, Plastic




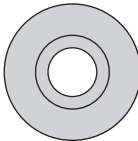
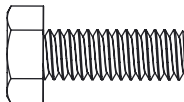
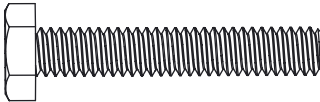
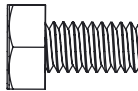


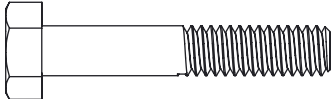
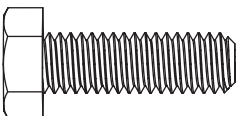
No.	Part #	Qty	Description
58	L-1744-6	1	Label, Serial#, Spyker
59	1017410	1	Medium Frame Weldment, PC
60	1018125	1	Stand, Med Frame, PC
63	1001607	2	Wheel, 13"
64	F-283	2	Bearing, Axle
67	1017628	1	Manual
68	1017577	1	Cover, Hopper 50#
69	1017545	1	Screen, 50#
70	1020302	1	Hopper, 50# with Decals
71	1001386	1	Spyker Accuway Label
72	1008067	1	Decal; Spyker Square Blue
74	1000053	1	Roll Pin, 1/8 x 3/4
75	1017730	1	Spacer, Plastic
77	1017776	1	Support Bracket
78	1020283	1	Decal; QR Code, Calibration

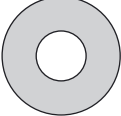
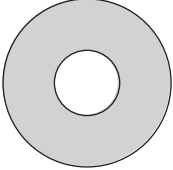
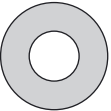
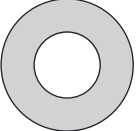
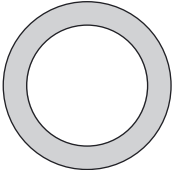
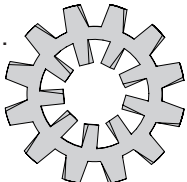
No.	Part #	Qty	Description
78	1018577	1	Parts Bag
2	1001554	9	Washer, Nylon
3	1005198	23	Nut, NylonLock 1/4-20, SS
6	1001533	2	Nylon Flange Bushing
43	1001351	7	Washer, 1/4" SS
44	1007888	4	Bolt, HexHd, 1/4 x 2-1/4 SS
45	1017371	1	Bolt, HexHd, 1/4 x 3-1/4 SS
46	1001262	10	Bolt, HexHd, 1/4 x 1-1/2 SS
47	1017617	1	Plate, Guide
48	1007828	2	Knob, Handle
49	1017346	1	Spring, Control Lever
50	1017345	1	Lever, Control
53	1001315	4	Nut, NylonLock 5/16-18
54	45M1111SS	6	Washer, Flat, SS-5/16"
55	1008811	2	Bolt, Hex 5/16-18 x 1 SS316
56	1017374	2	Bolt, Carriage, 5/16 x 3/4
61	1005414	1	Rue Ring Locking Pin
62	1001350	5	Washer, Flat SS
65	1001274	1	Clevis Pin, 3/16 x 1-3/4
66	1019596	1	Cotter Ring
73	1017344	1	Control Lever Stop
76	1017725	2	Lock Washer Ext/Int Tooth 5/16

# Hardware Identifier

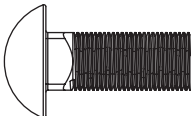
DO NOT RETURN PRODUCT IF YOU ARE MISSING PARTS. PLEASE CALL: 1 (800) 972-6130

ILLUSTRATIONS ON THIS PAGE ARE TO SCALE FOR FASTER IDENTIFICATION OF HARDWARE DURING ASSEMBLY.

- 3 Nut: Nylon Lock  
1/4"-20 (x23) .....   
**1005198**
- 39 Nut: Nylon Lock, SS  
#10-24 (x8) .....   
**1001308**
- 53 Nut: Nylon Lock  
5/16"-18 (x4) .....   
**1001315**
- 6 Flange Bushing  
Nylon (x2) .....   
**1001533**
- 1 Bolt: Hex Head, SS  
1/4 x 3/4" (x5) .....   
**1006084**
- 9 Bolt: Hex Head  
1/4-20 x 1.50 (x1) ...   
**1017551**
- 14 Bolt: Hex Head, SS  
1/4 x 1/2" (x4) .....   
**1004880**
- 44 Bolt: Hex Head, SS  
1/4 x 2-1/4" (x4) .....   
**1007888**
- 45 Bolt: Hex Head, SS  
1/4 x 3-1/4" (x1) .....   
**1017371**
- 46 Bolt: Hex Head, SS  
1/4 x 1-1/2" (x10) .....   
**1001262**
- 55 Bolt: Hex Head, SS  
5/16-18 x 1" (x2) .....   
**1008811**

- 2 Washer  
Nylon (x10) .....   
**1001554**
- 23 Washer:  
Felt (x2) .....   
**1000198**
- 43 Washer  
SS 1/4" (x7) .....   
**1001351**
- 54 Washer: Flat  
SS 5/16" (x6) .....   
**45M1111SS**
- 62 Washer: Flat  
SS (x5) .....   
**1001350**
- 76 Lock Washer: 5/16  
Ext/Int Tooth (x2) .....   
**1017225**

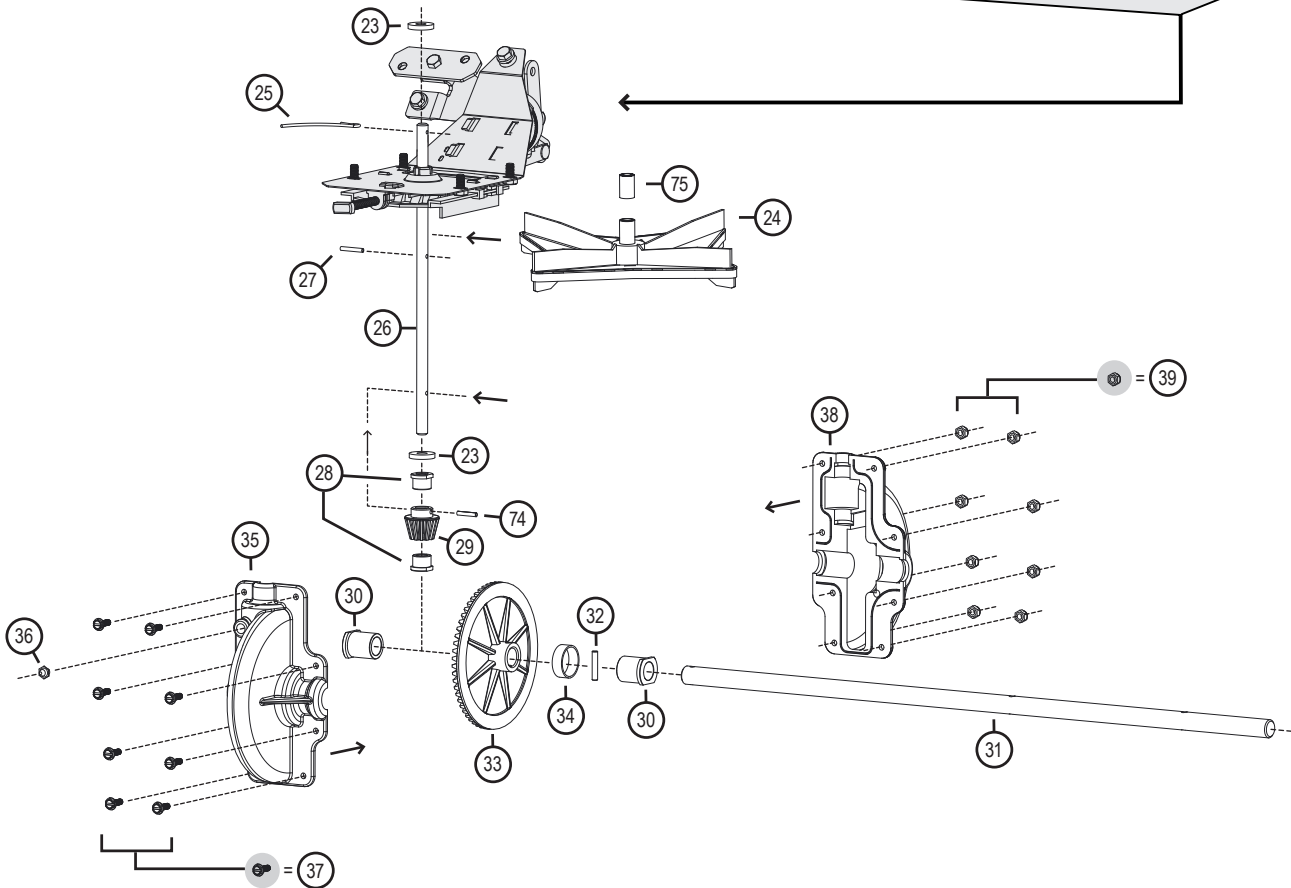
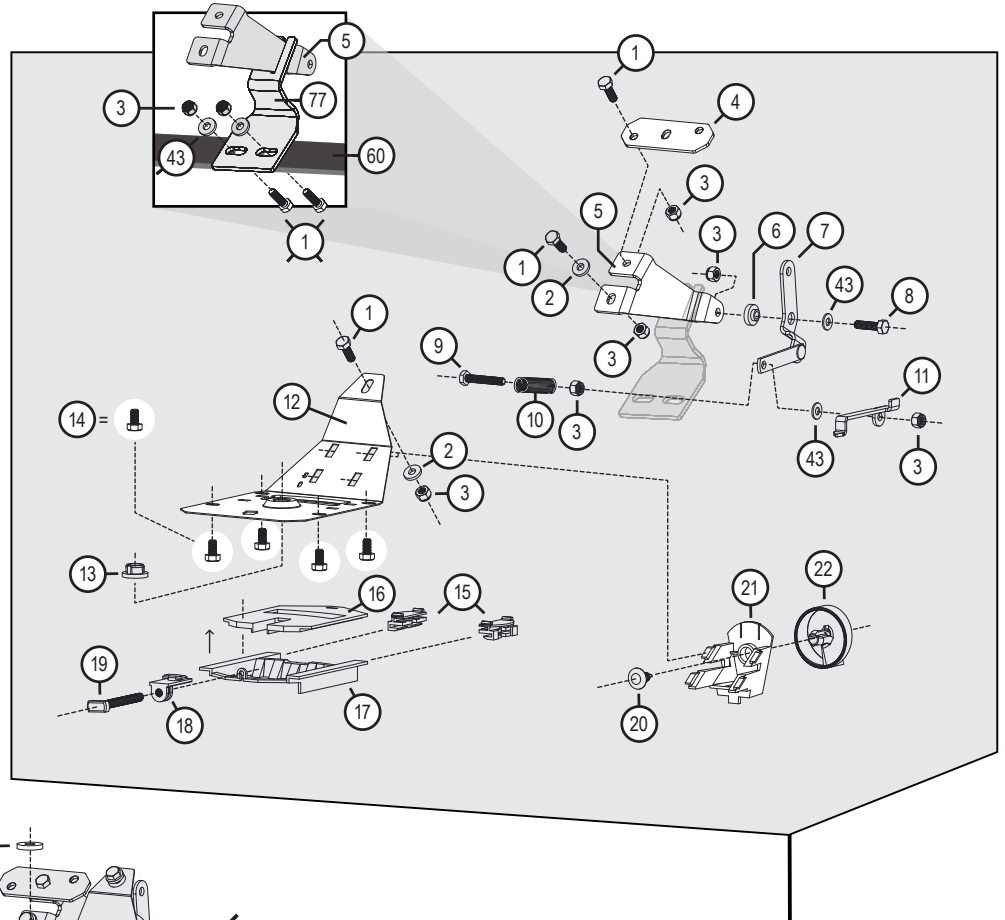
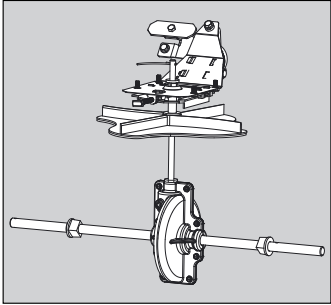
\*Exterior circumference of washers can vary. These dimensions are a measurement of the internal diameter of the washer.

- 56 Bolt: Carriage  
5/16 x 3/4" (x2) .....   
**1017374**

# Part Explosions

DO NOT RETURN PRODUCT IF YOU ARE MISSING PARTS. PLEASE CALL: 1 (800) 972-6130

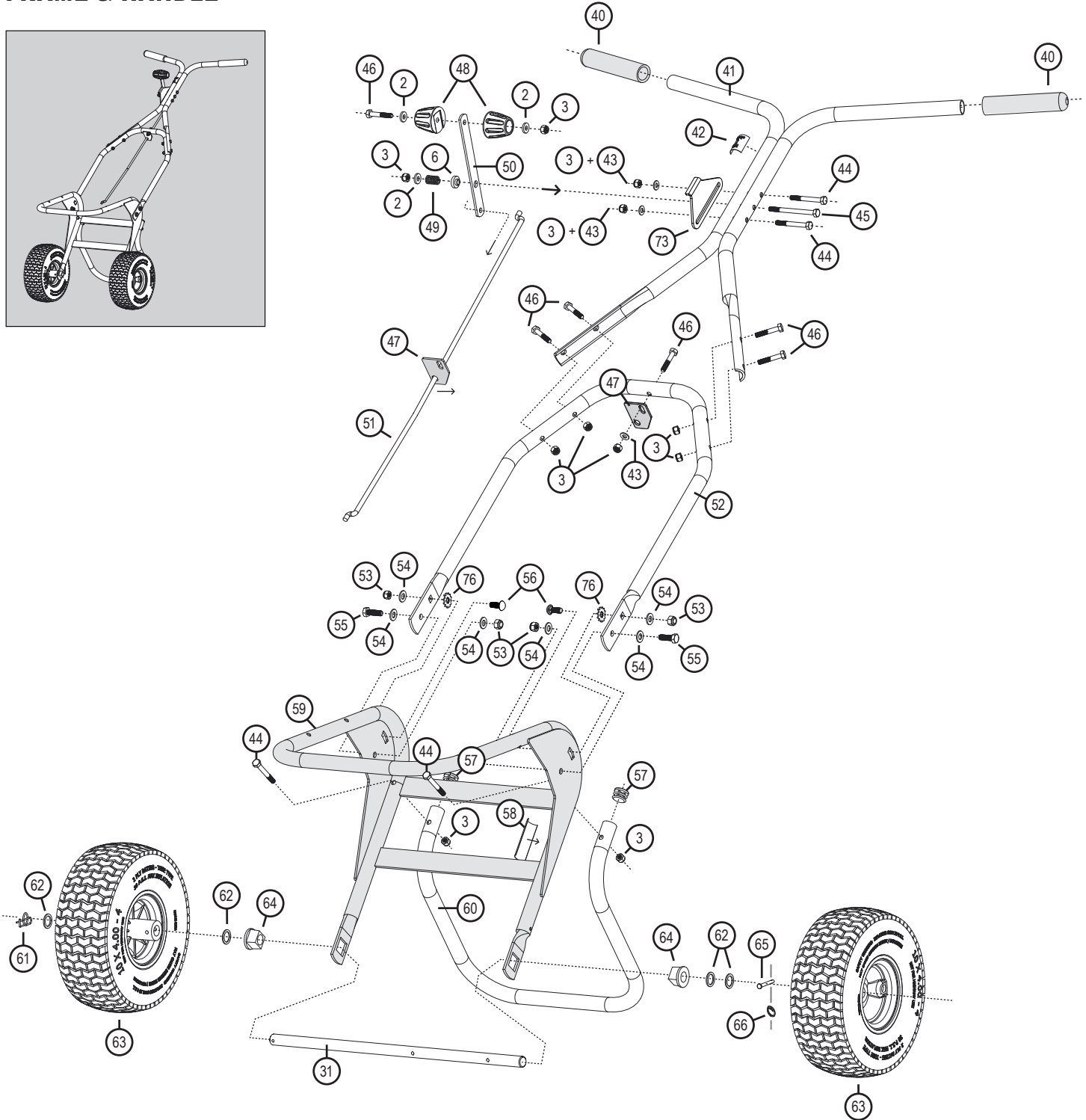
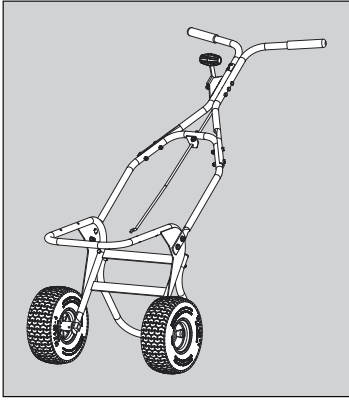
## RATE GATE + AXLE / SPINNER



# Part Explosions

DO NOT RETURN PRODUCT IF YOU ARE MISSING PARTS. PLEASE CALL: 1 (800) 972-6130

## FRAME & HANDLE



# Part Explosions

DO NOT RETURN PRODUCT IF YOU ARE MISSING PARTS. PLEASE CALL: 1 (800) 972-6130

## HOPPER



1020283

