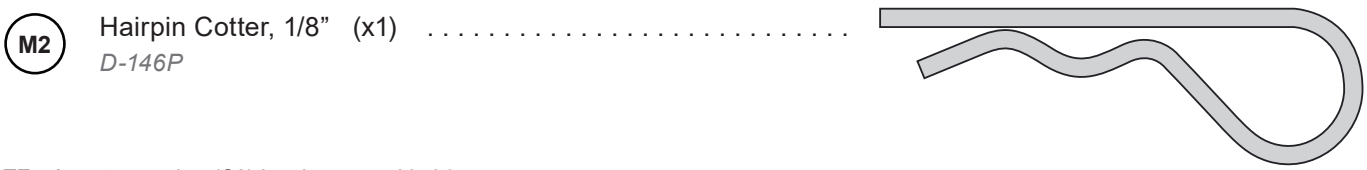
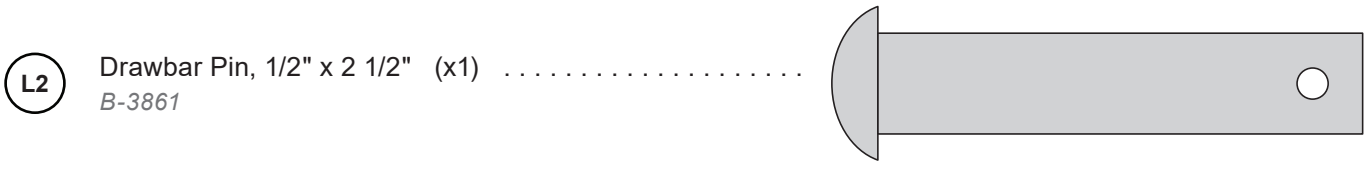
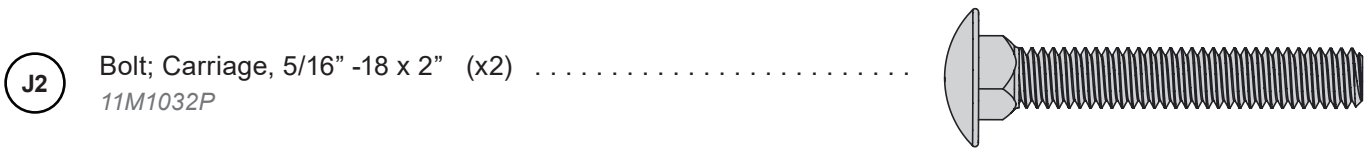
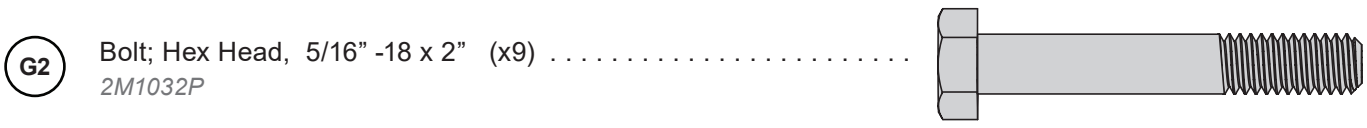
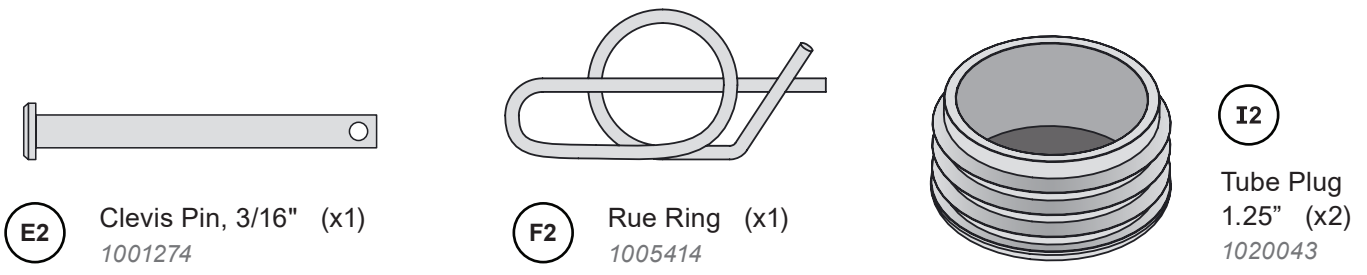
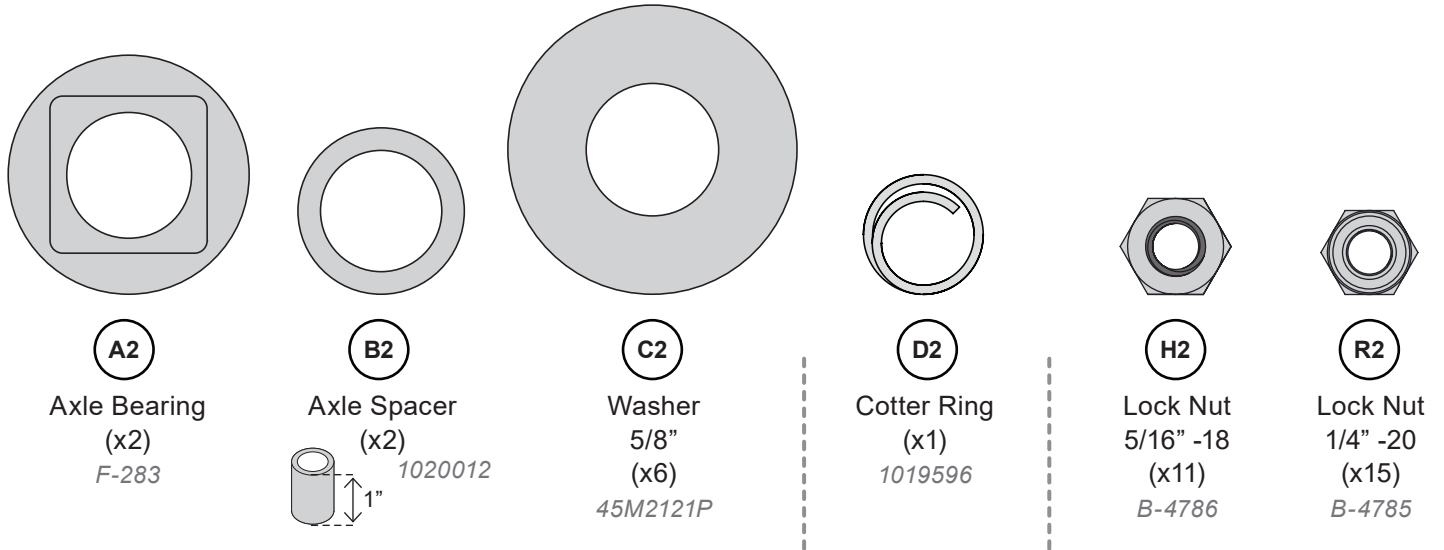


Hardware Identifier

ILLUSTRATIONS ON THIS PAGE ARE TO SCALE FOR FASTER IDENTIFICATION OF HARDWARE DURING ASSEMBLY.

DO NOT RETURN PRODUCT IF YOU ARE MISSING PARTS. PLEASE CALL: 1 (800) 972-6130

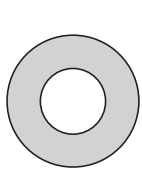


NOTE: An extra washer (C2) has been provided / may be remaining after assembly is complete.

Hardware Identifier

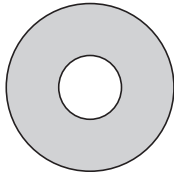
ILLUSTRATIONS ON THIS PAGE ARE TO SCALE FOR FASTER IDENTIFICATION OF HARDWARE DURING ASSEMBLY.

DO NOT RETURN PRODUCT IF YOU ARE MISSING PARTS. PLEASE CALL: 1 (800) 972-6130



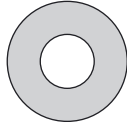
K2

Washer
5/16"
(x2)
45M1111P



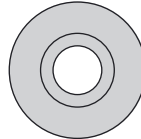
N2

Felt
Washer
(x2)



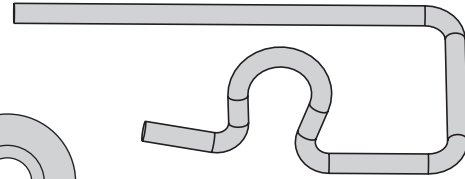
Q2

Washer
1/4"
(x5)
45M0909P



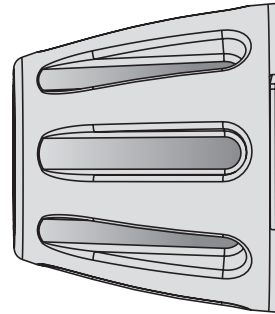
U2

Nylon Flange
Bushing
(x4)
1001533



O2

Spinner
Clip (x1)
1001683



W2

Handle
Knobs (x2)
1007828

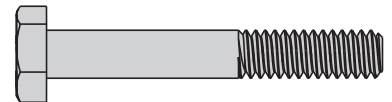
P2

Bolt; Hex Head, 1/4" -20 x 2" (x4)



S2

Bolt; Hex Head, 1/4" -20 x 1-3/4" (x3)



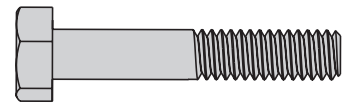
T2

Bolt; Hex Head, 1/4" -20 x 2-1/4" (x1)



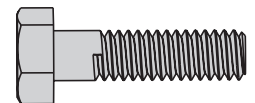
V2

Bolt; Hex Head, 1/4" -20 x 1-1/2" (x1)



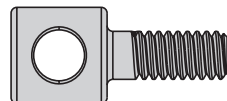
X2

Bolt; Hex Head, 1/4" -20 x 1" (x3)



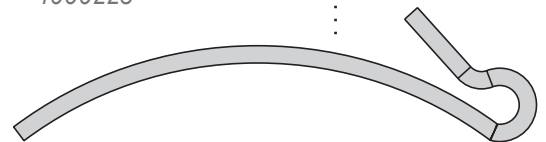
Y2

Linkage Pin (x1)



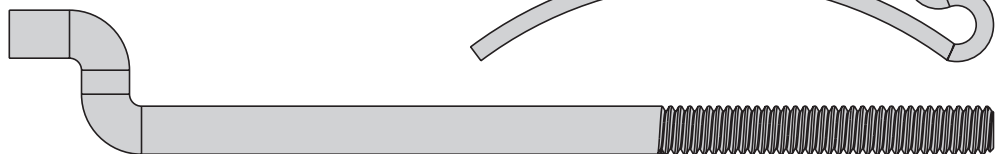
A3

Agitator (x1)



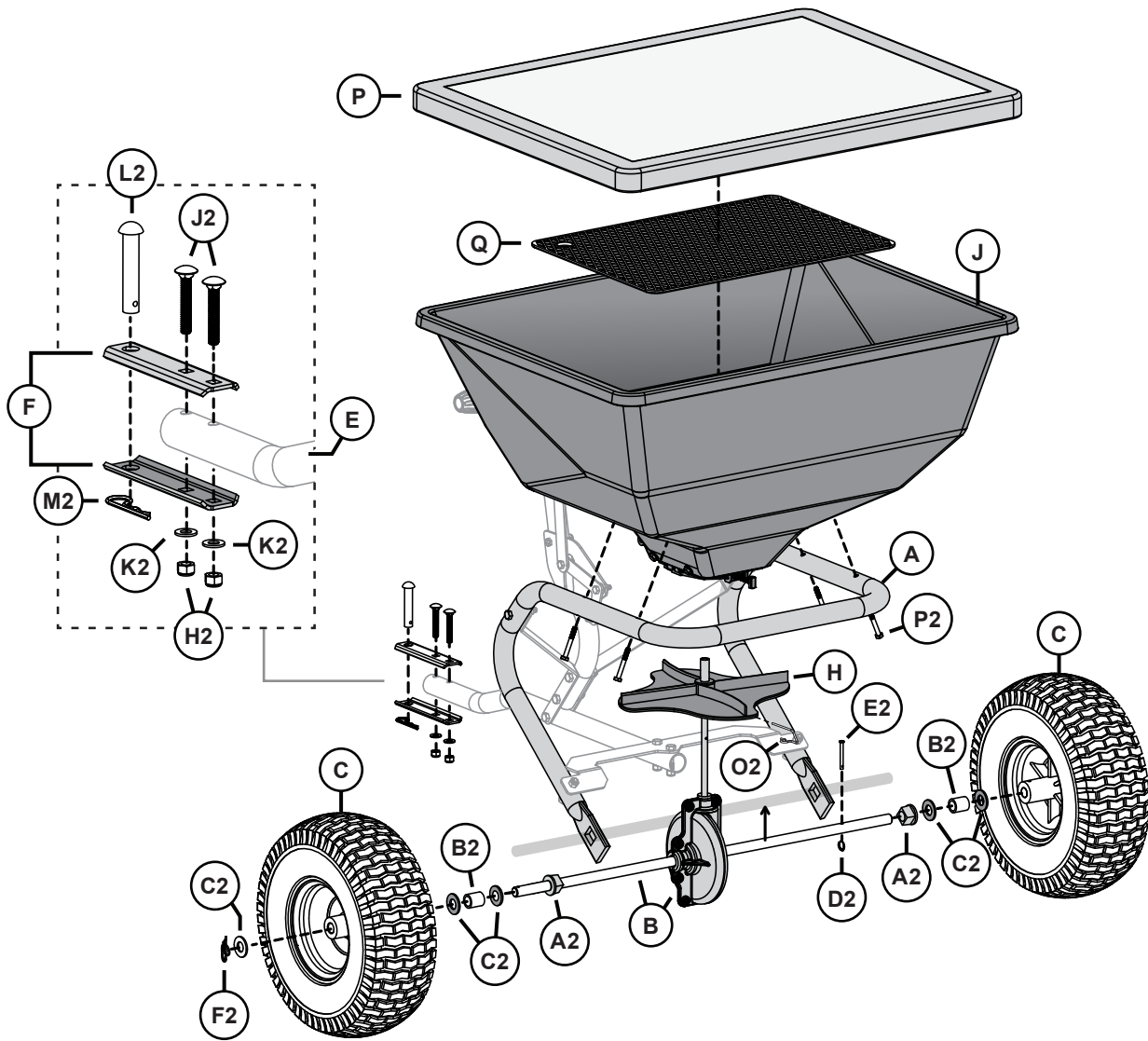
Z2

Linkage
Rod (x1)



Part Explosion

DO NOT RETURN PRODUCT IF YOU ARE MISSING PARTS. PLEASE CALL: 1 (800) 972-6130



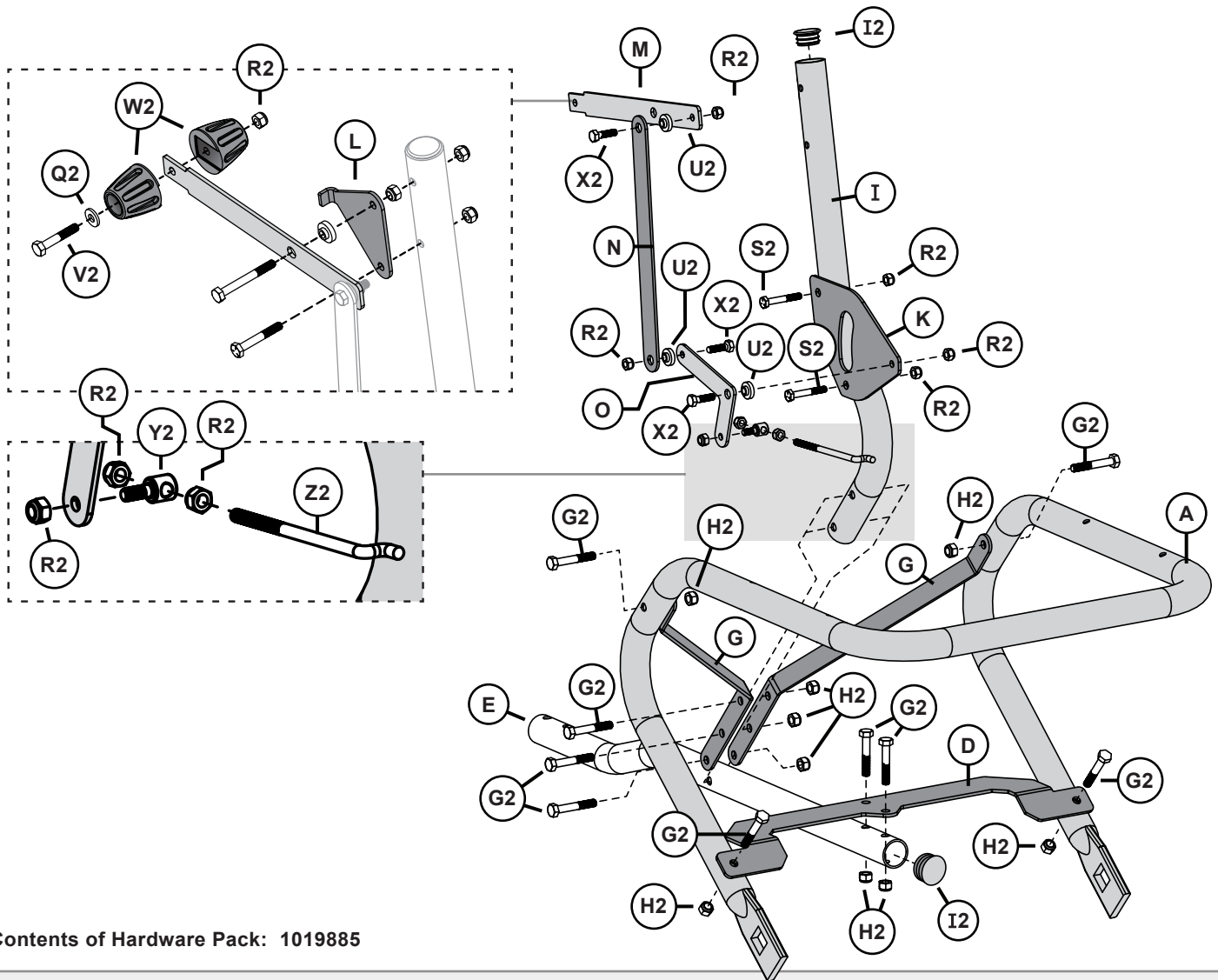
No.	Part #	Qty	Description
A	1019891-10	1	Painted Frame, 200#
B	1019992-2	1	Axle Assembly, 200#
C	1019863	2	Pneumatic Wheel, 15-6-6
D	1019894-10	1	Painted Cross Brace, 200#
E	1019896-10	1	Tow Bar
F	R-892-10	2	Clevis
G	1020016-10	2	Tow Bar Brace
H	1000607	1	Spinner - Drilled (black)
I	1019895-10	1	Riser Bar
J	1020128	1	Hopper, 200lb

^L 1019899 1 Tow Spreader Gate Assy

No.	Part #	Qty	Description
K	1019869-10	1	Pivot Plate
L	1019868-10	1	Lever Stop Bracket
M	1019870-10	1	Gate Lever
N	1019872-10	1	Linkage Arm
O	1019873-10	1	Linkage Pivot
P	1019901	1	Hopper Cover
Q	1019900	1	Screen

Part Explosion

DO NOT RETURN PRODUCT IF YOU ARE MISSING PARTS. PLEASE CALL: 1 (800) 972-6130



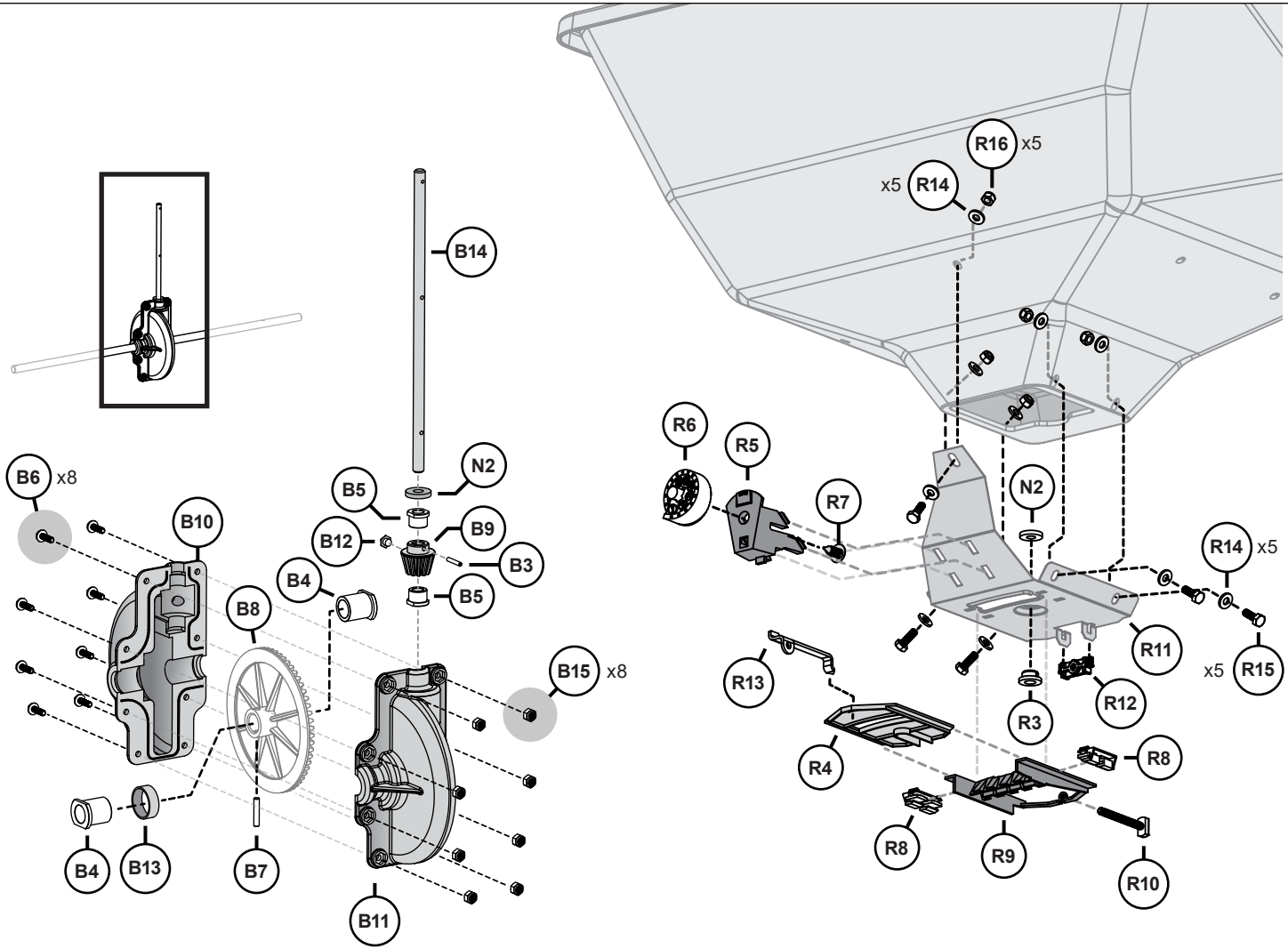
Contents of Hardware Pack: 1019885

No.	Part #	Qty	Description
A2	F-283	2	Axle Bearing
B2	1020012	2	Axle Spacer, 0.625
C2	45M2121P	6	Washer; Flat, 5/8
D2	1019596	1	Cotter Ring, S/S
E2	1001274	1	Clevis Pin, 3/16 x 1-3/4
F2	1005414	1	Rue Ring Locking Pin
G2	2M1032P	9	Bolt; Hex Head, 5/16 x 2
H2	B-4786	11	Nut; Nylon Lock, 5/16-18
I2	1020043	2	Tube Plug, 1.25" 14ga
J2	11M1032P	2	Bolt; Carriage, 5/16 x 2
K2	45M1111P	2	Washer; Flat, 5/16
L2	B-3861	1	Pin; Hitch, 1/2" x 2-1/2"
M2	D-146P	1	Cotter; Hairpin, 1/8", #211
N2	1000198	2	Felt Washer

No.	Part #	Qty	Description
O2	1001683	1	Spinner Clip
P2	2M0832P	4	Bolt; Hex Head, 1/4 x 2
Q2	45M0909P	5	Washer; SAE Flat, 1/4"
R2	B-4785	15	Nut; Nylon Lock, 1/4-20
S2	2M0828P	3	Bolt; Hex Head, 1/4 x 1-3/4
T2	2M0836P	1	Bolt; Hex Head, 1/4 x 2-1/4
U2	1001533	4	Nylon Flange Bushing
V2	2M0824P	1	Bolt; Hex Head, 1/4 x 1-1/2
W2	1007828	2	Knob, Handle
X2	2M0816P	3	Bolt; Hex Head, 1/4 x 1
Y2	1019874	1	Linkage Pin
Z2	1019875	1	Linkage Rod
A3	1000223	1	Agitator Wire

Part Explosion

DO NOT RETURN PRODUCT IF YOU ARE MISSING PARTS. PLEASE CALL: 1 (800) 972-6130



No.	Part #	Qty	Description
B	101992-2		TRANSMISSION
B3	1000053	1	Roll Pin, 1/8 x 3/4"
B4	1001299	2	Gearbox Bushing, 5/8"
B5	1001301	2	Bushing; Spinner Shaft, 3/8"
B6	1001303	8	Bolt; Flange Head, 10-24 x 5/8" SS
B7	1001304	1	Dowel Pin; SS, 3/16 x 1"
B8	1001516	1	Bevel; Gear
B9	1001518	1	Pinion; Gear
B10	1005336	1	Gear Box Cover; Front
B11	1005337	1	Gear Box Cover; Rear
B12	1005368	1	Grease Zerk Drive IN, 1/4"
B13	1005389	1	Nylon Spacer, Pin Retain
B14	1019860	1	Fan Shaft, Tow Spreader
B15	B-3385	8	Nut, Nylon Lock, #10-24
N2	1000198	1	Felt Washer

No.	Part #	Qty	Description
	1019899		GATE ASSEMBLY
N2	1000198	1	Felt Washer
R3	1000203	1	Hopper Bottom Bearing
R4	1000210	1	Rate Gate
R5	1000211	1	Dial Mount
R6	1000213	1	Dial, Plastic
R7	1000215	1	Pine Tree Clip
R8	1001521	2	Guide, Rate Gate/Accuway
R9	1001523	1	Accuway Diffuser
R10	1001526	1	Accuway Adjustment Screw
R11	1019761	1	Hopper Bottom
R12	1019861	1	Accuway Adjustment Nut
R13	1019876	1	Rate Gate Link
R14	45M0909P	10	Washer, SAE Flat, 1/4"
R15	2M0812P	5	Bolt, Hex Head, 1/4 x 3/4
R16	B-4785	5	Nut, Nylon Lock 1/4-20