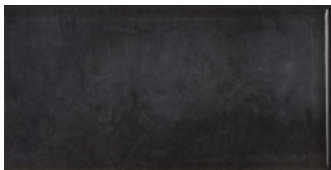


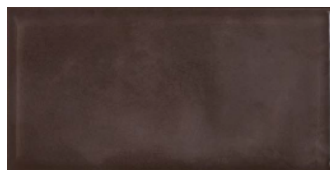
BE IN by IRIS CERAMICA



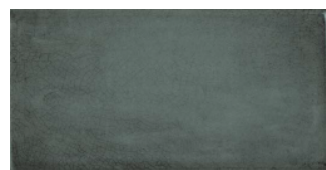
Color Availability



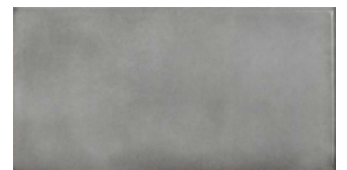
Black



Brown



*Green Sea



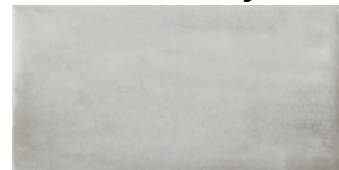
*Grey



Rose



*Turquoise












*White

SPECIFICATIONS

Wall tiles

CLASSIFICATION IN ACCORDANCE WITH EN 14411 - ANNEX L - GROUP B III

PHYSICAL-CHEMICAL PROPERTIES	STANDARD OF TEST	REQUIRED VALUE	AVERAGE VALUE
 Sizes	ISO 10545.2	Length and width Thickness Linearity Wedging Warpage	$\pm 0,6\%$ $\pm 0,5\%$ $\pm 5\%$ $\pm 5\%$ $\pm 0,5\%$ $\pm 0,3\%$ $\pm 0,6\%$ $\pm 0,4\%$ $\pm 0,5\%$ $\pm 0,3\%$
 Water absorption	ISO 10545.3	$E \leq 10\%$	$\sim 16\%$
 Bending strength	ISO 10545.4	Modulus of rupture	R 15 N/mm ² 22 N/mm ²
 Resistance to abrasion	ISO 10545.7	According to manufacturer's data	Indicated in the catalog
 Coefficient of linear thermal expansion	ISO 10545.8	Test method available [≥]	$8 \times 10^{-6} \text{ } ^\circ\text{C}^{-1}$
 Resistance to thermal shock	ISO 10545.9	Test method available	
 Crazing resistance	ISO 10545.11	Test method available	Guaranteed
 Chemical resistance	ISO 10545.13	Test method available	Guaranteed
 Stain resistance	ISO 10545.14	$1 < X < 5$	Indicated in the catalog

CLASS 5 Stains removed with warm running water (without any detergents)

