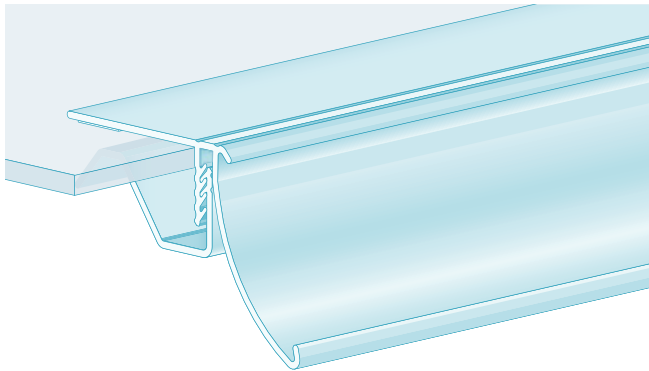


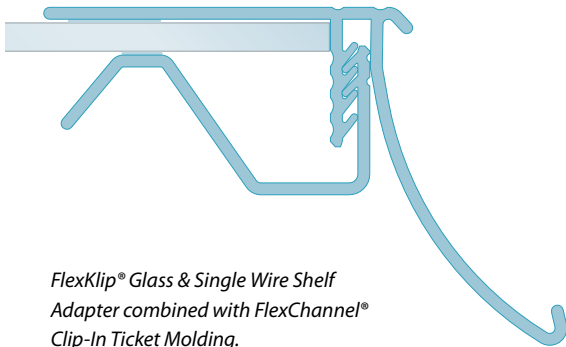
FlexKlip® Glass & Single Wire Shelf Adapter



For Glass and Single Wire Shelving up to 0.5" Thick

The FlexKlip® Glass and Single Wire Shelf Adapter is a **semi-permanent molding** that installs over your existing shelf to create a **price channel**.

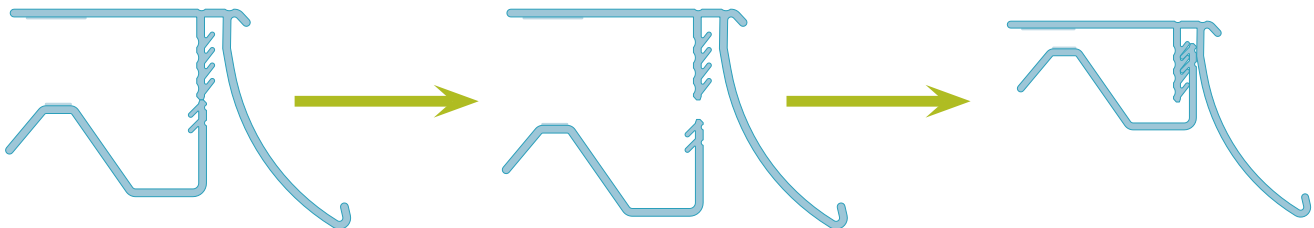
You can use sign clips directly in the price channel or you can combine it with a **FlexChannel® Clip-In Ticket Molding** for overall **SKU reduction** for your ticket molding program. FlexKlip® shelf adapters are designed to stay on the fixture as the clip-in molding is replaced when needed.



FlexKlip® Glass & Single Wire Shelf Adapter combined with FlexChannel® Clip-In Ticket Molding.

Features

- Made with thicker PVC plastic for durability
- Shipped as one piece
- Groove for bending and splitting apart into two pieces
- Ratchet allows height variance for installation
- Grip beads prevent molding from sliding side to side
- Price Channel fits 1.25" H price tickets, FlexChannel® ticket moldings, and other sign accessories.
- Fits shelves and single wire applications up to 0.5" thick



kostklip®
LIFE AT THE SHELF EDGE

Toll-Free North America 1.800.661.5547

Kost Klip Manufacturing Ltd. | www.kostklip.com | sales@kostklip.com

291A-FlexKlip Glass & Single Wire Shelf Adapter_Product Sheet | Printed in Canada