



Electrostatic Waterborne Solutions

Proven Reliability and Ease of Use for Spraying Waterborne Material



Table of Contents

Electrostatic Waterborne Solutions

Systems

HydroShield®

HydroShield® Color Change Valves

WB100™ & WB3000™

Applicators

Pro Xp™ Manual and Automatic Electrostatic Waterborne Gun

Pro Xp™ WBx External Charge Waterborne Air Spray Gun

Pro Xpc™ Auto Electrostatic Air Spray Gun

ProBell® Waterborne Rotary Atomizer

Proven reliability and ease of use for spraying waterborne material

Superior transfer efficiency, reduced manufacturing costs and positive environmental impact

Graco offers three solutions for spraying waterborne coatings with electrostatic applicators.



HydroShield Waterborne Systems

Operator friendly isolation systems allow flexibility and control of the spraying process in both manual and automatic applications.

WB100 and WB3000 Isolation Systems

Durable low and high pressure isolation cabinets contain five gallons (19 L) of charged material.



Pro Xp WBx Manual and Automatic Electrostatic Guns

High performing guns externally charge material — no additional equipment required.

HydroShield®

Waterborne Systems

Reliable components and system control make HydroShield an operator friendly solution. Improve transfer efficiency and safety, while easily spraying waterborne material with manual or automatic electrostatic air spray and air assist guns.



Refill without shutting system down

Higher productivity is achieved by not needing to shut down the system to refill. The internal isolation pump automatically refills when the manual gun trigger is released or automatic spraying pauses briefly.

Unique operator control

The controller interface allows the operator to set system parameters and spray settings for precise process control.

Market proven components

Comprised of spray guns, controller interface and other parts used in the marketplace for years, HydroShield brings together Graco durability into one system.

Built-in safety

In addition to safely grounding components to protect the operator, the automatic refill feature reduces the need to open the isolation cabinet. Reduced operator interaction means a safer workplace.

System configuration flexibility

HydroShield is available in a variety of configurations.

- Low pressure systems spray with manual or automatic air spray guns.
- High pressure systems include a Merkur pump and a manual or automatic gun for air assisted airless spraying.
- Options for gun hoses and gun flush box ready systems are also available.
- System configurations with color change valves and flushing sequence capability.

Ease of painting without operator interaction with the supply system

Low Pressure Feed System

Feed with a low pressure paint supply, including Triton, pressure pot or circulation system

Controller Interface

Operate easily with system functions in one location and simple screens

Light Tower

Indicates the fluid level in the internal pump. Settings may be customized but standard is:

Green: 50% full or more

Yellow: Below 50% full, but more than 10% full

Red: Below 10% full



Isolation Cabinet

Constructed with durable materials and components for extended life

Isolation Valve

Designed to allow the system to fill without concern of electrostatic breakdown

Cleansing Solution

Ensures the isolation valve is cleaned of residual waterborne material

Ground Rod

Protects the operator when opening the cabinet

Isolation Pump

Contains 1150cc (39 oz) of material which refills for continuous spraying



Air Assist Systems

Merkur 15:1 or 30:1 pump inside the cabinet boosts fluid pressure to the high pressure gun

Service Components

Easy access and few parts make downtime minimal and maintenance simple

Air Spray Systems

Low pressure configurations deliver a high finish quality with the Pro Xp WB gun

Pro Xp Manual Waterborne Guns

When the trigger is released the system is activated to fill (see page 12).



Gun Flush Box Ready

Configurations are available to connect and control gun flush box operation

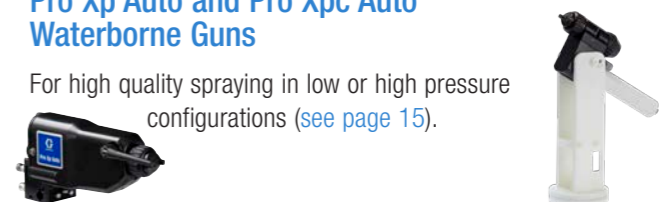


Color Change Valves

Valves for color change and flush sequences mount on the side of the cabinet (see page 7)

Pro Xp Auto and Pro Xpc Auto Waterborne Guns

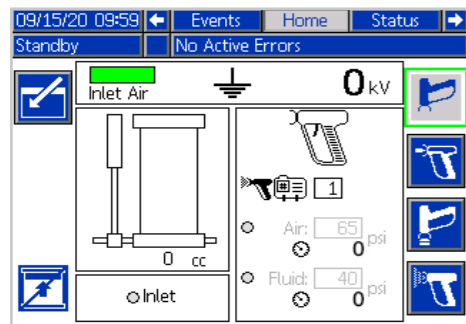
For high quality spraying in low or high pressure configurations (see page 15).



Spray settings in one location on simple screens making it easy to operate

Home Screen

Information about the system status and operation modes

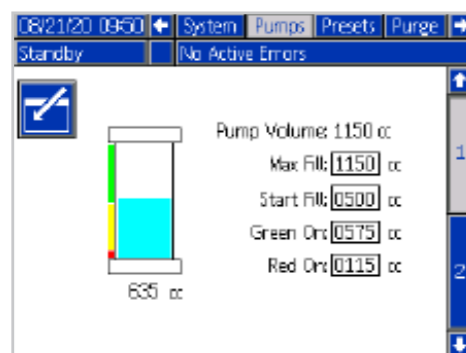


System status indicates pump fill level, inlet air, ground status and kV output.

Do not fill mode reduces material waste.

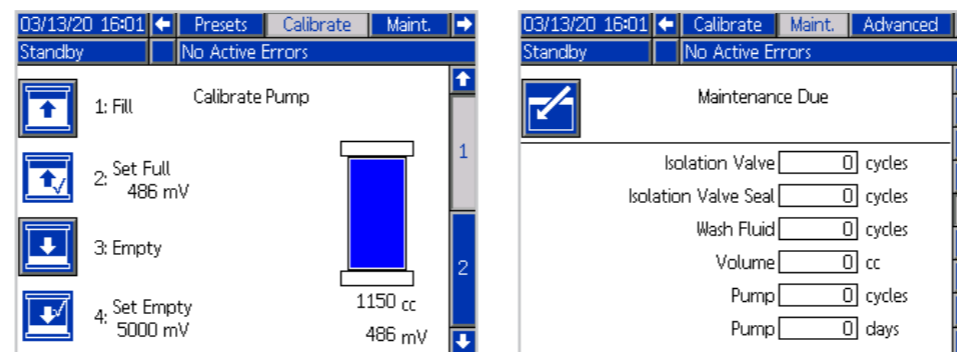
Pump Fill Screen

Customize maximum volume and level of pump depletion before refill based on production needs. Light tower indicator can also be customized.



Maintenance Screens

Keep your system running smoothly with calibration capability and maintenance schedules

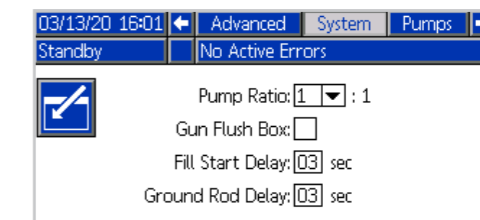


Operation modes show:

- standby
- prime
- purge
- spray

Delay Settings Screen

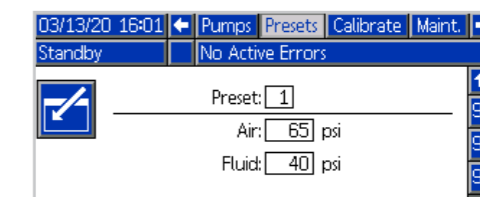
Customize fill delay and ground rod delay for painter spray techniques



Preset status indicates preset setting and actual air and fluid pressure

Preset Screen

Configure as many as 99 presets for different gun air and fluid pressure needs



Color change and flushing capability maximizes productivity and minimizes material waste



HydroShield color change valves allow for ease of managing multiple colors and precisely control flushing. Low pressure or high pressure systems are available.

HydroShield Color Change Systems are equipped with 6 valves – 3 valves for colors and 3 valves for flush sequences – including flush material, air push and a dump valve.

- Color change sequences are completed through the controller interface with either manual or preset purge operations.
- Dump valve allows for minimal waste by recovering material in the isolation pump.
- Flushing sequences with flush material and air chop for complete rinse of the system.
- Color change valves can be added for manufacturing flexibility.

Home Screen

Visually indicates flush sequence action including changing pump colors for material contents

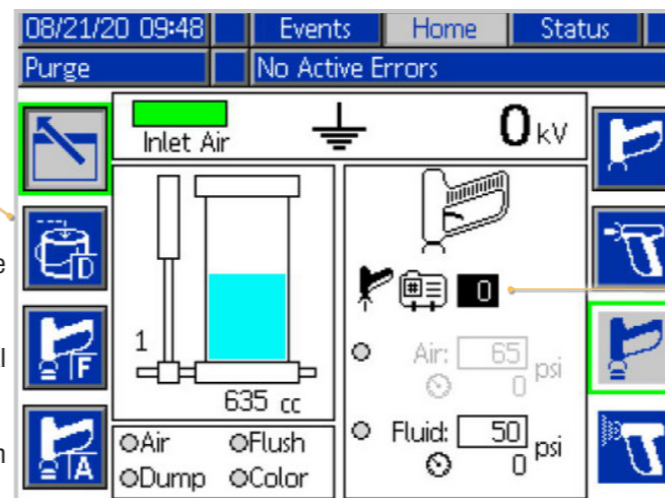
Manual Purge

Operation by cycling between buttons for

Dump Valve

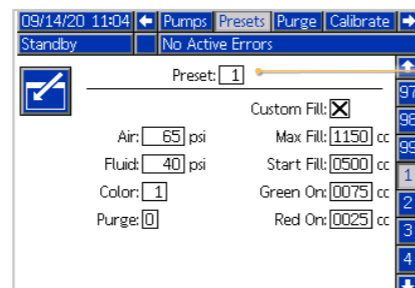
Flush Material

Air Push



Purge Sequences

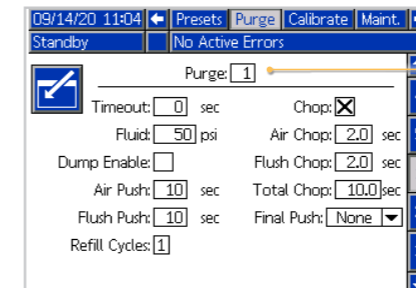
Can be set up and activated with presets



99 Spray Presets

Optimize spraying and flushing with customizable settings for

- Air and fluid pressure to the gun
- Color valve designation for the material
- Purge Profile for optimal flushing sequence
- Custom fill level of the internal isolation pump, including light tower indication



Purge Profiles

Allow for 5 unique presets which designate

- Flush fluid pressure and time
- Number of cycles the internal isolation pump is refilled
- Ability to activate material dump from the isolation pump
- Sequence and time setup of flush chop with air and flush material

Technical Specifications

Air Spray

Maximum Fluid Working Pressure	100 psi (0.7 MPa, 7.0 bar)
Maximum Fluid Inlet Pressure	100 psi (0.7 MPa, 7.0 bar)
Maximum Air Working Pressure	100 psi (0.7 MPa, 7.0 bar)
Minimum System Inlet Air Pressure	70 psi (0.48 MPa, 4.8 bar)
Maximum System Inlet Air Pressure	100 psi (0.7 MPa, 7.0 bar)
Isolation System Air Inlet Fitting	1/2 npt(m)
Isolation System Fluid Inlet Fitting	1/4 npsm(m)
Maximum Fluid Hose Length	100 ft. (30.5 m)
Maximum Fluid Operating Temperature	120°F (48°C)
External Power Requirements	100-240VAC, 50-60Hz
Weight	250 lb (113 kg)
Approvals	FM US, FMC, CE
Manual	3A7312

Air Assist

Maximum Fluid Working Pressure	
Mercur 15:1 System	1500 psi (10.4 MPa, 100 bar)
Mercur 30:1 System	3000 psi (20.7 MPa, 200 bar)
Maximum Fluid Inlet Pressure	100 psi (0.7 MPa, 7.0 bar)
Maximum Air Working Pressure	100 psi (0.7 MPa, 7.0 bar)
Minimum System Inlet Air Pressure	70 psi (0.48 MPa, 4.8 bar)
Maximum System Inlet Air Pressure	100 psi (0.7 MPa, 7.0 bar)
Isolation System Air Inlet Fitting	1/2 npt(m)
Isolation System Fluid Inlet Fitting	1/4 npsm(m)
Maximum Fluid Operating Temperature	120°F (48°C)
External Power Requirements	100-240VAC, 50-60Hz
Weight	300 lb (136kg)
Approvals	FM US, FMC, CE
Manual	3A7370

Ordering Information

Air Spray

Part Number	Type	Gun Included	Color Change and Flush Valves**	Gun Flush Box Equipped*	25 ft air and fluid hose	50 ft air and fluid hose
WMBL00	Manual	No				
WMBL01	Manual	No		x		
WMBL02	Manual	No	x			
WMBL03	Manual	No	x	x		
WMBL20	Manual	Air Spray			x	
WMBL40	Manual	Air Spray				x
WMBL41	Manual	Air Spray		x		x
WMBL42	Manual	Air Spray	x			x
WMBL43	Manual	Air Spray	x	x		x
WMBL60	Manual	Mold Release			x	
WMBL80	Manual	Mold Release				x
WABL00	Automatic	No				
WABL01 [†]	Automatic	No				
WABL02	Automatic	No	x			
WABL03 [†]	Automatic	No	x			

[†]Does not include a fluid regulator

Air Assist

Part Number	Type	Pump Included	Air Assist Gun included	Color Change and Flush Valves**	Gun Flush Box Equipped*	25 ft air and fluid hose	50 ft air and fluid hose
WMBH00	Manual	Merkur 30:1					
WMBH01	Manual	Merkur 30:1			x		
WMBH02	Manual	Merkur 30:1		x			
WMBH03	Manual	Merkur 30:1		x	x		
WMBH04	Manual	Merkur 15:1					
WMBH05	Manual	Merkur 15:1			x		
WMBH06	Manual	Merkur 15:1		x			
WMBH07	Manual	Merkur 15:1		x	x		
WMBH20	Manual	Merkur 30:1	x			x	
WMBH40	Manual	Merkur 30:1	x				x
WMBH41	Manual	Merkur 30:1	x		x		x
WMBH42	Manual	Merkur 30:1	x	x			x
WMBH43	Manual	Merkur 30:1	x	x	x		x
WMBH44	Manual	Merkur 15:1	x				x
WMBH45	Manual	Merkur 15:1	x		x		x
WMBH47	Manual	Merkur 15:1	x	x	x		x
WABH00	Automatic	Merkur 30:1					
WABH02	Automatic	Merkur 30:1		x			

*Gun flush box must be purchased separately

**Systems include 6 fluid valves (3 color and 3 flush). Additional valves may be added.

Part Number	Grounded Air Hose with stainless steel braid ground path (Red)
235070	25 foot (7.6 m)
235071	36 foot (11 m)
235072	50 foot (15 m)
235073	75 foot (23 m)
235074	100 foot (30.5 m)

Part Number	Air Assist WB Fluid Hose
25R012	25 foot (7.6 m)
25R013	36 foot (11 m)
25R014	50 foot (15 m)
25R015	75 foot (23 m)
25R016	100 foot (30.5 m)

Part Number	Air Spray WB Fluid Hose
25R002	25 foot (7.6 m)
25R003	36 foot (11 m)
25R004	50 foot (15 m)
25R005	75 foot (23 m)
25R006	100 foot (30.5 m)

Part Number	Description
25R200	HydroShield Cleansing Solution, 1 gallon bottle
26B400	Triton 1:1 Supply pump and Mount kit
26D031	1 Color Change Valve Kit
26D032	2 Color Change Valve Kit

WB100™ & WB3000™ Isolation Systems

The dependable way to isolate waterborne coatings. Ideal for electrostatic spray booths.

Standard Voltage Display

Easily monitor voltage for overall performance

WB100 with Triton™ 1:1 Pump

Use for low pressure spraying with waterborne electrostatic air spray gun

Material Supply Container

Easily remove and refill 5 gallon (19 liter) container

Portable Cabinet

Move to various applications

WB3000 with a Merkur® ES 30:1 Air Assist Pump

Use for high pressure spraying with waterborne electrostatic air-assist gun



Pro Xp WB Electrostatic Gun

Standard and smart models provide excellent material savings, outstanding ergonomics and superior finish quality.



Ordering Information

Part Number	Description
WB100	
24N580	Waterborne isolation enclosure with standard electrostatic air spray gun L60T18, grounded air hose 235070 and waterborne fluid hose 24M732.
24P629	Waterborne isolation enclosure with smart electrostatic air spray gun L60M18, grounded air hose 235070 and waterborne fluid hose 24M732.
24P734	Waterborne isolation enclosure with mold release smart electrostatic gun L60M19, grounded air hose 235070 and waterborne fluid hose 24M732.
WB3000	
24N551	Waterborne isolation enclosure with standard electrostatic air-assist gun H60T18, grounded air hose 235070 and waterborne fluid hose 24M508.
24P632	Waterborne isolation enclosure with smart electrostatic air spray gun H60M18, grounded air hose 235070 and waterborne fluid hose 24M508.

Technical Specifications

WB100

Maximum Fluid Working Pressure	100 psi (0.7 MPa, 7.0 bar)
Maximum Air Working Pressure	100 psi (0.7 MPa, 7.0 bar)
Minimum Air Pressure at Gun Inlet.....	45 psi (0.32 MPa, 3.2 bar)
Maximum System Inlet Air Pressure.....	100 psi (0.7 MPa, 7.0 bar)
WB System Air Consumption.....	15–20 scfm (425–565 l/min)
Short Circuit Current Output.....	125 microamperes
Voltage Output.....	0.35 J with fluid hose 24M733 installed with Pro Xp WB gun 60 kV
Isolation Enclosure Air Inlet Fitting.....	1/4 npt
Triton Pump	Manual 309303
WB100 Manual	3A2496

WB3000

Maximum Fluid Working Pressure	3000 psi (21 MPa, 210 bar)
Maximum Air Working Pressure	100 psi (0.7 MPa, 7.0 bar)
Minimum Air Pressure at Gun Inlet.....	45 psi (0.32 MPa, 3.2 bar)
Maximum System Inlet Air Pressure.....	100 psi (0.7 MPa, 7.0 bar)
WB System Air Consumption.....	7.5–14 scfm (220–400 l/min)
Short Circuit Current Output.....	125 microamperes
Voltage Output.....	0.35 J with fluid hose 24M733 installed with Pro Xp WB gun 60 kV
Isolation Enclosure Air Inlet Fitting.....	1/4 npt
Merkur Pump.....	Manual 3A0732
WB3000 Manual	3A2497

Reliably isolate and spray waterborne coatings at 100 or 3000 psi

Pro Xp™ Waterborne (WB) Guns

Electrostatically spray waterborne materials with isolation systems

High transfer efficiency for low or high pressure applications

Alternator Speed Indicator

Changes color with electrostatic performance

Control Knobs

Access and adjust easily

Atomizing Air Control

Adjust from full to minimal to fit spraying needs

Ergonomic Handle

Fits nicely in your hand for comfortable spraying

Internal Power Supply

Improve operator mobility with no heavy cords to slow down spraying

Light Trigger Pull

Reduces muscle strain and operator fatigue

Smart Controls

Available for all waterborne models

- kV, current and hertz
- Easy, low kV setting
- Digital diagnostic mode for troubleshooting



Pro Xp WB models for HydroShield and WB isolation systems

Air Spray Gun

- For low pressure spraying
- Delivers high quality finish
 - Sprays with various aircaps and nozzles



Air Assist Gun

- For high pressure spraying
- Delivers a fine finish
 - Sprays with AEF or AEM tip



Mold Release Gun

- For low pressure spraying with an air assist spray tip
- Delivers fine atomized particles needed for mold release applications
 - Sprays with an AEM or AEF spray tip



Ordering Information

Pro Xp WB Air Spray Ordering Information

Part Number	Item	Description
L60T18	Pro Xp60 WB	Standard electrostatic air spray gun for waterborne coatings.
L60M18	Pro Xp60 WB	Smart electrostatic air spray gun for waterborne coatings.
L60M19	Pro Xp60 MR	Smart electrostatic air spray gun for waterborne mold release coating applications. Requires an AEM or AEF spray tip for operation.



Aircap Selection Chart

Part Number (color)	Pattern Shape	Length in (cm)	Recommended Fluid Viscosity cp at 70°F (21°C)	Recommended Production Rates
24N477 (black)	Round end	15-17 (381-432)	Light to medium (20-70 cp)	Up to 15 oz/min (450 cc/min)
24W279 (green)	Round end	15-17 (381-432)	Light to medium (20-70 cp)	Up to 15 oz/min (450 cc/min)
24N438 (black)	Round end	15-17 (381-432)	Light to medium (20-70 cp)	Up to 15 oz/min (450 cc/min)
24N376 (black), 24N276 (blue) 24N277 (red), 24N278 (green)	Tapered end	17-19 (432- 483)	Light to medium (20-70 cp)	Up to 15 oz/min (450 cc/min)
24N274 (black)	Tapered end	12-14 (305-356)	Light to medium (20-70 cp)	Up to 15 oz/min (450 cc/min)

- Distance to target: 10 in (254 mm)
- Inlet air pressure: 50 psi (3.4 bar, 34 kPa)
- Fan air: adjusted for maximum width
- Fluid flow rate: 10 oz/min (300 cc/min)

Nozzles Selection Chart

Color Coded Fluid Nozzle for Standard Materials

Part Number	Color	Orifice Size - mm (inch)
24N619	Black	0.55 (0.022)
24N613	Black	0.75 (0.029)
25N895	Green	1.0 (0.042)
25N896	Gray	1.2 (0.047)
24N616	Black	1.5 (0.055)
25N897	Brown	1.8 (0.070)
24N618	Black	2.0 (0.080)

Precision high wear nozzles (PHW) for Abrasive Materials

hardened SST seat and damage resistant SST tip; for standard coatings, abrasives, and metallics

Part Number	Color	Orifice Size - mm (inch)
25N831	Green	1.0 (0.042)
25N832	Gray	1.2 (0.047)
25N833	Black	1.5 (0.055)
25N834	Brown	1.8 (0.070)

For a complete list of parts and accessories, refer to the Pro Xp Waterborne Manual 3A2496.

Technical Specifications

	Pro Xp60	Pro Xp60 AA
Maximum Voltage Output.....	60 kV	60 kV
Maximum Working Fluid Pressure.....	100 psi (7 bar, 0.7 MPa)	3000 psi (210 bar, 21 MPa)
Maximum Working Air Pressure	100 psi (7 bar, 0.7 MPa)	100 psi (7 bar, 0.7 MPa)
Gun Weight (without hose)*	21 oz (600 g)	23 oz (660 g)
Gun Length.....	9.5 in (24 cm)	9.7 in (24.5 cm)
Recommended paint resistivity range	≤ 1 MΩ/cm	≤ 1 MΩ/cm
Fluid Inlet.....	3/8 npsm(m)	1/4-18 npsm(m)
Air Inlet.....	1/4 npsm(m) left handed thread	1/4 npsm(m) left handed thread
Instruction Manual	3A2496	3A2497

*Standard gun model. For other models reference the instruction manual.

Pro Xp WB Air Assist Ordering Information

Part Number	Item	Description
H60T18	Pro Xp60 AA WB	Standard electrostatic air-assist gun for waterborne coatings.
H60M18	Pro Xp60 AA WB	Smart electrostatic air-assist gun for waterborne coatings.



AEF Fine Finish Pre-Orifice Spray Tips

Recommended for high finish quality applications at low and medium pressures. AEF tips have a pre-orifice that assists in atomizing sheer thinning materials. Order desired tip, Part No. AEFxxx, where xxx = 3-digit number from the matrix below.

Orifice Size inch (mm)	Fluid Output fl oz/min (l/min)		Maximum Pattern Width at 12 inches (305 mm) inches (mm)					
	at 600 psi (41 bar, 4.1 MPa)	at 1000 psi (70 bar, 7.0 MPa)	6-8 (150-200)	8-10 (200-250)	10-12 (250-300)	12-14 (300-350)	14-16 (350-400)	16-18 (400-450)
0.008 (0.203)	8.5 (0.25)	11.0 (0.32)				608		
0.010 (0.254)	9.5 (0.28)	12.5 (0.37)	310	410	510	610	710	810
0.012 (0.305)	12.0 (0.35)	16.0 (0.47)	312	412	512	612	712	812
0.014 (0.356)	16.0 (0.47)	21.0 (0.62)	314	414	514	614	714	814
0.016 (0.406)	20.0 (0.59)	26.5 (0.78)	-	416	516	616	716	-

* Tips are tested in water.

Fluid output (Q) at other pressures (P) can be calculated by this formula: $Q = (0.041) (QT) \sqrt{P}$ where QT = fluid output (fl oz/min) at 600 psi from the above table for the selected orifice size.

AEM Spray Tips

Recommended for high finish quality applications at low and medium pressures.

Order desired tip, Part No. AEMxxx, where xxx = 3-digit number from the matrix below.

Orifice Size inch (mm)	Fluid Output fl oz/min (l/min)		Maximum Pattern Width at 12 inches (305 mm) inches (mm)							
	at 600 psi (41 bar, 4.1 MPa)	at 1000 psi (70 bar, 7.0 MPa)	2-4 (50-100)	4-6 (100-150)	6-8 (150-200)	8-10 (200-250)	10-12 (250-300)	12-14 (300-350)	14-16 (350-400)	16-18 (400-450)
0.007 (0.178)	4.0 (0.1)	5.2 (0.15)	107	207	307	-	-	-	-	-
0.009 (0.229)	7.0 (0.2)	9.1 (0.27)	-	209	309	409	509	609	-	-
0.011 (0.279)	10.0 (0.3)	13.0 (0.4)	-	211	311	411	511	611	711	-
0.013 (0.330)	13.0 (0.4)	16.9 (0.5)	-	213	313	413	513	613	713	813
0.015 (0.381)	17.0 (0.5)	22.0 (0.7)	-	215	315	415	515	615	715	815
0.017 (0.432)	22.0 (0.7)	28.5 (0.85)	-	217	317	417	517	617	717	-
0.019 (0.483)	28.0 (0.8)	36.3 (1.09)	-	-	319	419	519	619	719	-
0.021 (0.533)	35.0 (1.0)	45.4 (1.36)	-	-	-	421	521	621	721	821
0.023 (0.584)	40.0 (1.2)	51.9 (1.56)	-	-	-	423	523	623	723	823
0.025 (0.635)	50.0 (1.5)	64.8 (1.94)	-	-	-	425	525	625	725	825
0.029 (0.736)	68.0 (1.9)	88.2 (2.65)	-	-	-	-	-	-	-	829
0.031 (0.787)	78.0 (2.2)	101.1 (3.03)	-	-	-	431	-	631	-	831
0.033 (0.838)	88.0 (2.5)	114.1 (3.42)	-	-	-	-	-	-	-	833
0.037 (0.939)	108.0 (3.1)	140.0 (4.20)	-	-	-	-	-	-	737	-
0.039 (0.990)	118.0 (3.4)	153.0 (4.59)	-	-	-	-	539	-	-	-

* Tips are tested in water.

Fluid output (Q) at other pressures (P) can be calculated by this formula: $Q = (0.041) (QT) \sqrt{P}$ where QT = fluid output (fl oz/min) at 600 psi from the above table for the selected orifice size.

Pro Xp™ WBx External Charge Waterborne Air Spray Gun

Reduce material and environmental costs without extra equipment. Waterborne material stays grounded and is charged at tip of the gun with a probe, delivering a consistent, high quality finish.

Two Probe Options for Different Needs

- Long probe provides the best transfer efficiency and wrap
- Short probe provides electrostatic charging in tight spaces

Increased Operator Comfort

- Lightweight, compact design with ergonomic handle makes all-day spraying comfortable

Optimized for Waterborne Paints

- Superior finish quality
- Designed so air caps stay clean longer

Improved Operator Control

- Smart gun eliminates guesswork
- Control knobs make spraying adjustments easy



180°

No Tool Probe Removal
Turn 180° to remove

External Charging Probes
Designed for quick release and easy cleaning

Ordering Information

Pro Xp 40 kV WBx Gun Models

Part Number	Description
L40M28	Smart 40 kV air spray gun
L40T28	Standard 40 kV spray gun

Probe Kit Ordering Information

Part Number	Description
25E639	Long probe kit includes 2 probes
25E664	Short probe kit includes 2 probes

Technical Specifications

Maximum Voltage Output.....	40 kV
Maximum Working Fluid Pressure.....	100 psi (7 bar, 0.7 MPa)
Maximum Working Air Pressure.....	100 psi (7 bar, 0.7 MPa)
Gun Weight (without hose)*	19.8 oz (560 g)
Gun Length.....	8.7 in (22 cm)
Recommended paint resistivity range	≤ 1 MΩ/cm
Fluid Inlet.....	3/8 npsm(m)
Air Inlet.....	1/4 npsm(m) left handed thread
Instruction Manual	3A4795

For a complete list of parts and accessories, refer to the Pro Xp WBx Waterborne Manual **3A4795**

*Standard gun model. For other models reference the instruction manual.

Pro Xp™ Auto Waterborne Guns

Get the spray performance and transfer efficiency of our manual Pro Xp guns in an automatic version. Every automatic Pro Xp gun is tested and delivered with a certificate indicating it meets all of Graco's requirements for spray pattern, mechanical performance and electrical performance so you know you're getting a quality product.

Dependability

- Durable components give you extra peace of mind knowing that you'll spend less time fixing and more time spraying

Maximize Your Profits

- Higher transfer efficiency equals less waste – saving you money on material
- New aircaps use less air and help lower your energy bill



Ordering Information

Pro Xp Auto Gun Models

Part Number	Description
LA1T28	60 kV, rear manifold mount, external charge, air spray
LA2T28	60 kV, bottom manifold mount, external charge, air spray
LA1M28	60 kV, rear manifold mount, external charge, air spray
LA2M28	60 kV, bottom manifold mount, external charge, air spray
LA1M18	60 kV, rear manifold mount, air spray
LA1T18	60 kV, rear manifold mount, air spray
HA1M18	60 kV, rear manifold mount, air assist
HA1T18	60 kV, rear manifold mount, air assist

Technical Specifications

Maximum Fluid Working Pressure.....	100 psi (7 bar, 0.7 MPa)
Maximum Working Air Pressure	100 psi (7 bar, 0.7 MPa)
Maximum Fluid Operating Temperature.....	120°F (48°C)
Paint Resistivity Range Solventborne Gun	3 megohm/cm to infinity
Paint Resistivity Range Waterborne Gun	≤3 megohm/cm
Short Circuit Current Output.....	125 microamperes
Gun Weight (approx. depending on gun model)	2.6 lb (1.2 kg)
Gun Length	10.6 in (27 cm)
Waterborne Models.....	60 kV
Atomizing Air Inlet Fitting	5/16 in (8 mm) OD nylon tube
Fan Air Inlet Fitting	5/16 in (8 mm) OD nylon tube
Cylinder Air Inlet Fitting	5/32 in (4 mm) OD nylon tube
Fluid Inlet Fitting	1/4 -18 npsm(m)

For a complete list of parts and accessories, refer to the Pro Xp Auto Manual 333012 or brochure 345066

Pro Xpc™ Auto

The Pro Xpc Auto electrostatic spray gun offers excellent finish quality, leading class transfer efficiency. It's safe, durable, designed for efficient system integration and comes with a serialized certificate of performance — so you can rest easy that your Pro Xpc Auto won't let you down.

Compact & Lightweight

- Spray in tight spaces and corners with compact design
- Weight makes it ideal for robots and fixtures with lower payloads (2 lb/0.91 kg)

Finish Quality

- Superior finish quality and leading class transfer efficiency with Pro Xp atomization
- Air Spray gun designed to spray a variety of materials including solventborne, high conductive and waterborne

Ordering Information

Pro Xpc Auto Gun Models

Part Number	Description
LC1028	Rear manifold gun for waterborne material
LC2028	Bottom manifold gun for waterborne material

Technical Specifications

Maximum Fluid Working Pressure.....	100 psi (7 bar, 0.7 MPa)
Maximum Working Air Pressure	100 psi (7 bar, 0.7 MPa)
Minimum Cylinder Actuating Pressure.....	50 psi (3.4 bar, 0.34 MPa)
Maximum Fluid Operating Temperature.....	120°F (48°C)
Paint Resistivity Range Solventborne Gun	3 megohm/cm to infinity
Paint Resistivity Range Waterborne Gun	≤3 megohm/cm
Short Circuit Current Output.....	150 microamperes
Gun Weight (approx. depending on gun model)	2.0 lb (0.9 kg)
Gun Length.....	5.7 in (14.5 cm)
Solventborne Models	0-100 kV
Waterborne Models.....	0-60 kV
Atomizing Air Inlet Fitting	5/16 in (8 mm) OD nylon tube
Fan Air Inlet Fitting	5/16 in (8 mm) OD nylon tube
Cylinder Air Inlet Fitting	1/4 in (6 mm) OD nylon tube
Fluid Inlet Fitting	1/4 in (6 mm) PFE tube



ProBell® Rotary Atomizer

Each ProBell rotary bell atomizer delivers superior quality, precision spraying with uniform atomization and an easily adjustable spray pattern for the most demanding finishing applications.

Durable

- Stainless steel air cap cover protects bell cup and air cap
- Air bearing has no parts to wear out
- Turbine assembly is a proven design

Safe

- Cable connection improves safety while reducing system complexity
- Arc detection shuts off electrostatics, ensuring a safe environment conductive and waterborne

Ordering Information

Pro Bell Rotary Atomizer Models

Hollow Wrist Robot Applicator Models

PART NO.	BELL CUP SIZE	NOZZLE SIZE
R5A248	50 mm	1.0 mm
R5A258	50 mm	1.25 mm
R5A268	50 mm	1.5 mm
R3A238	30 mm	0.75 mm
R3A248	30 mm	1.0 mm
R3A258	30 mm	1.25 mm
R3A268	30 mm	1.5 mm
R1A238	15 mm	0.75 mm
R1A248	15 mm	1.0 mm
R1A258	15 mm	1.25 mm

Standard Bell Applicator Models

PART NO.	BELL CUP SIZE	NOZZLE SIZE
R5A148	50 mm	1.0 mm
R5A158	50 mm	1.25 mm
R5A168	50 mm	1.5 mm
R3A138	30 mm	0.75 mm
R3A148	30 mm	1.0 mm
R3A158	30 mm	1.25 mm
R3A168	30 mm	1.5 mm
R1A138	15 mm	0.75 mm
R1A148	15 mm	1.0 mm
R1A158	15 mm	1.25 mm

Technical Specifications

Maximum air working pressure.....	100 psi (0.7 MPa, 7.0 bar)
Maximum fluid working pressure.....	150 psi (1.0 MPa, 10.3 bar)
Bearing air — minimum required	80 psi (0.55 MPa, 5.5 bar)
Turbine speed — maximum operating	60,000 rpm
Viscosity range	30-150 centistrokes
Maximum flow rate, 50 mm cup	500 cc/min
Maximum flow rate, 30 mm cup	400 cc/min
Maximum flow rate, 15 mm cup	100 cc/min
Maximum voltage output	100 kV for solventborne systems 60 kV for waterborne systems
Maximum current draw	150 micro-amperes
Applicator weight.....	Hollow Wrist Model 13.5 lbs (6 kg) Standard Model 9 lbs (4 kg)
Paint resistivity range.....	1 megohm/cm to infinity



Have Questions...

Contact Us

**Call 877-84GRACO
(1-877-844-7226)**

Visit Graco.com/finishing

All written and visual data contained in this document are based on the latest product information available at the time of publication. Graco reserves the right to make changes at any time without notice.

Call today for product information or to request a demonstration.

877.84GRACO (1-877-844-7226) or visit us at www.graco.com/finishing.

©2021 Graco Inc. Form No. 345157 Rev. D 10/21 Electronic Only.
All other brand names or marks are used for identification purposes and are trademarks of their respective owners. For more information on Graco's intellectual property, see www.graco.com/patent or www.graco.com/trademarks.

