



ColorMax[®] 2 powder spray booth

Engineered for Fast Color Change

Performance by design

Nordson

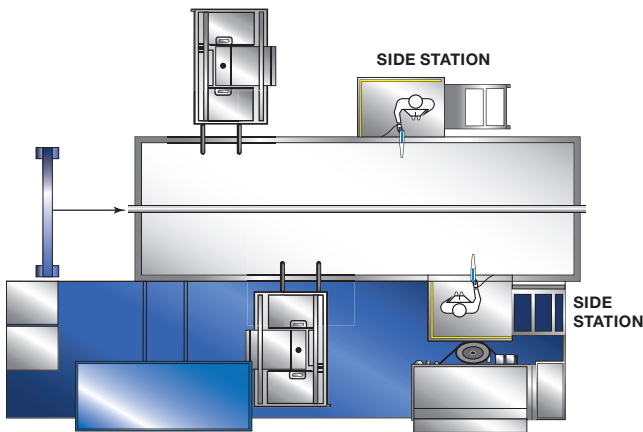
The ColorMax 2 System – Fast Color Change in Three Standard Models

The ColorMax 2 quick color change powder spray system is optimized for efficient, repeatable powder application and fast, contamination-free color change. Numerous system features help to minimize powder in process and aid in system cleaning – providing the ability to change colors quickly.

The fully integrated design of the ColorMax 2 system substantially reduces downtime and material waste for improved productivity. With the superior operating flexibility of the ColorMax 2 system, powder coaters are able to easily manage a broad range of colors, as well as both short and long runs to fit lean production schedules. As a result, manufacturers achieve maximum productivity with minimum downtime.

The ColorMax 2 system is available in three model types – engineered, cubed and hybrid. Based on your application parameters, you can choose the configuration that best meets your needs. Model types are determined by the location of the manual operator station, as illustrated in the tables below.

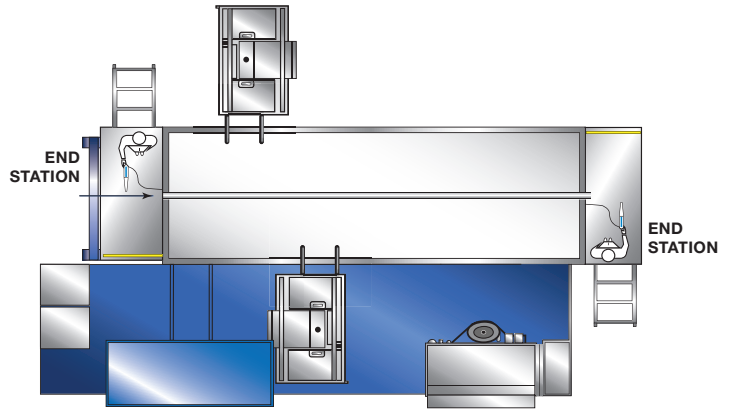
- **The ColorMax 2 engineered system** allows manual stations on the side of the booth.



Layout CE (Illustrated Above)

ColorMax 2 Engineered			
	Layout AE	Layout BE	Layout CE
End Station	0	0	0
Side Station	0	1	2

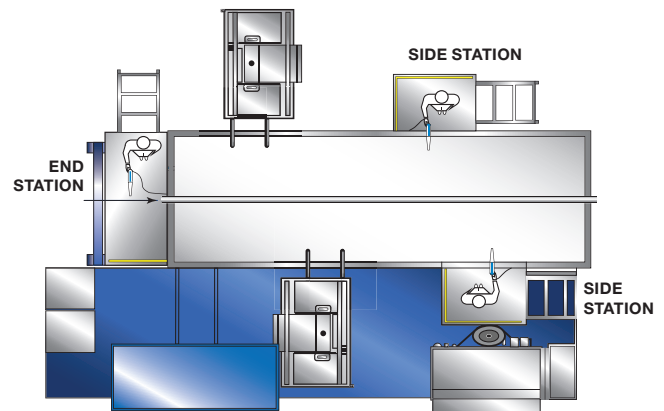
- **The ColorMax 2 cubed system** always has manual stations positioned at the front and back ends of the booth.



Layout AC (Illustrated Above)

ColorMax 2 Cubed	
	Layout AC
End Station	2
Side Station	0

- **The ColorMax 2 hybrid system** allows you to position manual stations at either the front or back of the booth, as well as on the sides.



Layout BH (Illustrated Above)

ColorMax 2 Hybrid		
	Layout AH	Layout BH
End Station	1	1
Side Station	1	2

Configuration arrangements are available within each model type (Engineered, Cubed, Hybrid) to accommodate several application requirements.

Contamination-Free Color Change

- **Uniquely designed, easy-to-clean, steel twin cyclones** facilitate complete cleaning of all surfaces.
- **Hinged sections on the twin cyclone pivot open** for easy access.
- **Open design** provides thorough visual inspection of areas that could cause cross-contamination.

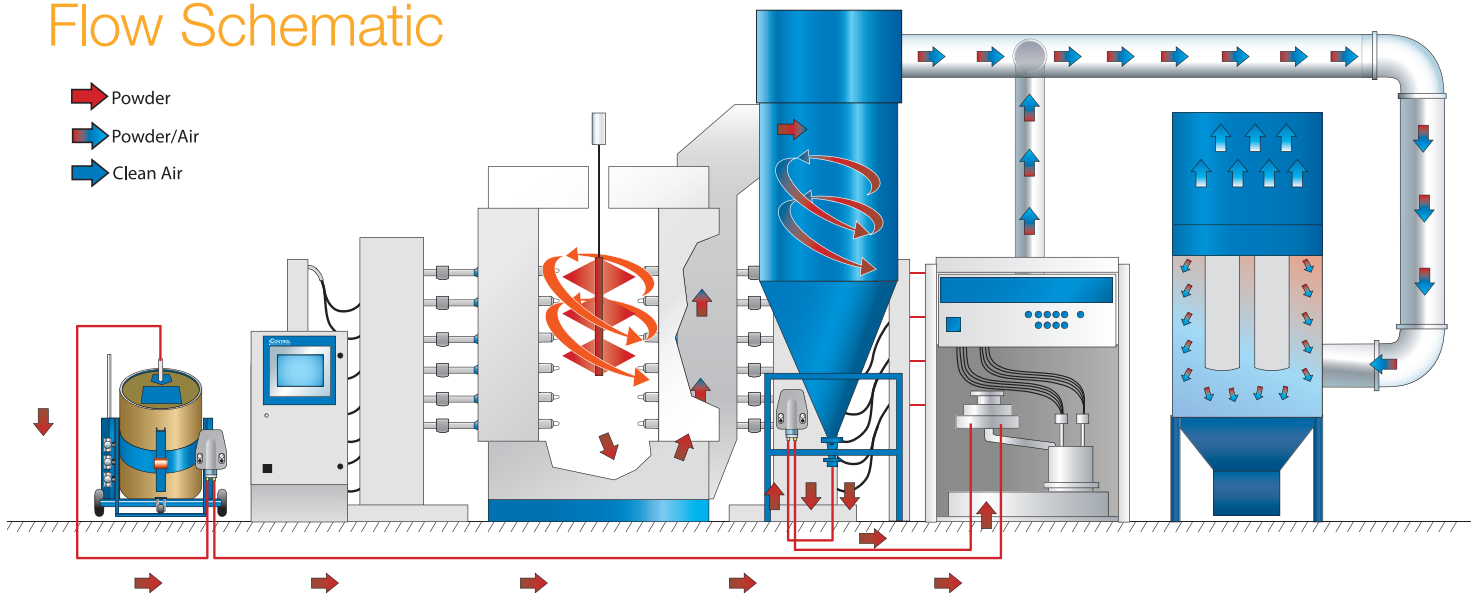


Optimized Powder Recovery/Recycling

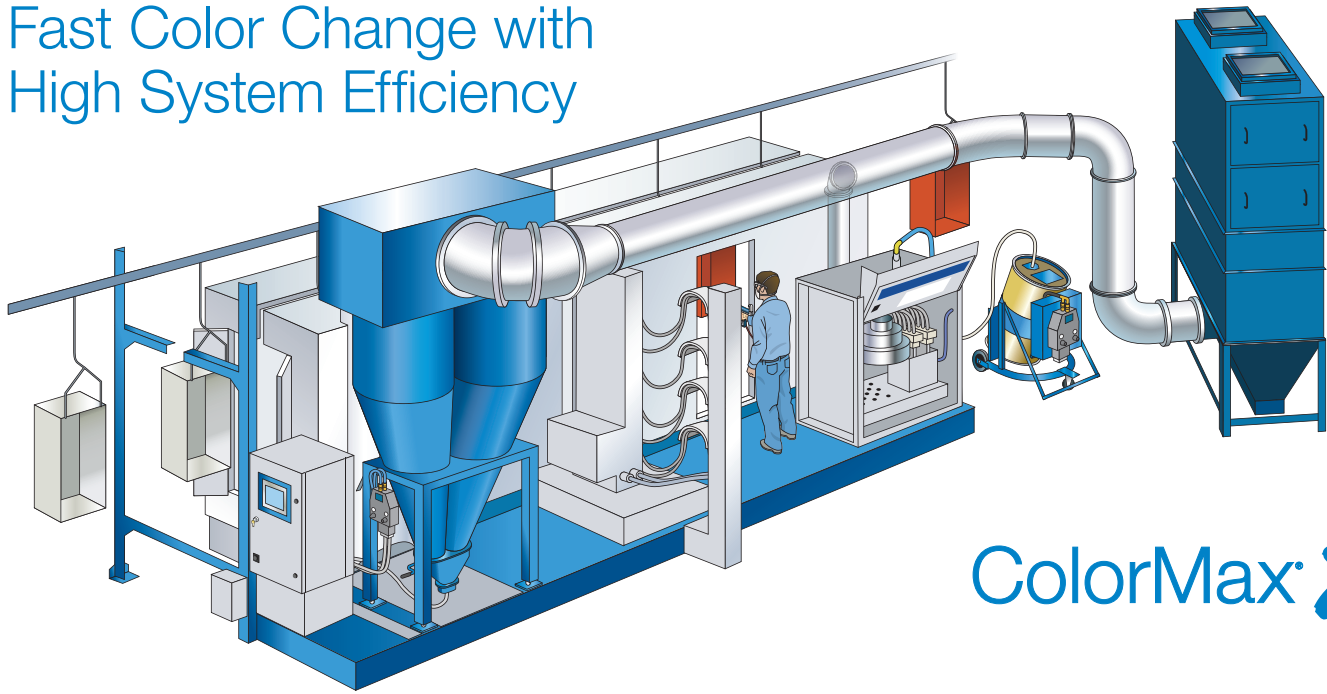
- **Using the Prodigy® HDLV transfer pump**, the ColorMax 2 system continuously evacuates powder from the twin cyclone resulting in maximum cyclone efficiency.
- **The high transfer output of the HDLV transfer pump** results in minimum powder in process at any given time during operation.



Flow Schematic



Fast Color Change with High System Efficiency



ColorMax²

Streamlined Canopy and Booth Design

- **The booth's non-conductive canopy is constructed with patented Apogee[®] composite material** for minimal powder attraction and retention resulting in minimal powder in process.
- **Reduced powder attraction/retention also results in less powder** to clean during color change and easier removal of the powder from the canopy using only compressed air.
- **The stainless steel booth floor** provides maximum durability and grounding of operators during cleaning for improved safety.

Pre-Assembled Utility Deck Speeds Installation Time

The pre-assembled utility deck speeds installation time. The utility deck incorporates pre-installed electrical utilities, pneumatic pipe, tubing and powder delivery hoses for a plug-and-play installation. As a result, powder coaters achieve minimum downtime and maximum productivity.



AeroWash[™] Base Cleaning System

The AeroWash air knives use compressed air to periodically remove settled powder from the booth floor into the high velocity AeroDeck air stream.



AeroDeck[™] Air Distribution System

The AeroDeck high velocity air stream keeps airborne powder from the AeroWash air knives moving to the cyclone – minimizing powder build-up in the spray booth and reducing color change time.



Built-in Safety

The ColorMax 2 system meets applicable NFPA safety requirements to assure safe and reliable operation.



Encore® Powder Feed Center

The ColorMax® 2 system incorporates the Encore powder feed center. This feed center is designed for fully automatic powder delivery, recovery and color change, with maximum powder usage and minimal powder loss.

- **Accommodates up to 27 pumps in one feed center.**
- **The Encore in-line pump design** allows for quick and thorough cleaning of the entire powder delivery circuit.
- **A high-pressure compressed air purge manifold sends a powerful burst of air through the siphon tube, pump, powder hose and guns** for quick, effective, automatic cleaning during color change.
- **The highly efficient vibratory sieve with deck screen** helps to eliminate any potential contaminants from both virgin and reclaimed powder sources.



Automatic Gun Cleaning

High pressure air knives are located at the automatic gun slots. This allows high-pressure, automated cleaning of the gun exterior. It also eliminates disassembly and manual cleaning, all while speeding color change time.



iControl® 2 Integrated Control System

The iControl system includes closed-loop digital control for atomizing and flow rate to the pump, helping to eliminate variations in powder flow at the gun. A compact flash drive is used to store up to 255 user-configurable presets by color or part type for optimum repeatability of all powder application parameters. The iControl system also provides user-configurable presets for part identification and in/out positioning of reciprocators and oscillators, as well as speed and stroke of reciprocators.

- **In/out positioning of guns** – includes user-configurable presets for lancing, contouring, and positioning based on part depth, shape, and width. The in/out positioner control allows for more precision application for a variety of part sizes and shapes.
- **Reciprocator control** – includes user-configurable presets for variable speed and stroke length. Reciprocator control allows for greater control of varying part heights and conveyor speeds.



Features and Benefits

- **The fully integrated design of the ColorMax® 2 system substantially reduces downtime and material waste – and improves productivity.**
- **The system is optimized** for efficient, repeatable powder application and fast contamination-free color change.
- **The ColorMax 2 system meets applicable NFPA safety requirements** to assure safe and reliable operation.
- **A high-pressure compressed air purge manifold sends a powerful burst of air through the siphon tube, pump, powder hose and guns** for quick, effective, automatic cleaning during color change.
- **Uniquely designed, easy-to-clean, steel twin cyclones** facilitate complete cleaning of all surfaces.
- **The highly efficient vibratory sieve with deck screen** helps to eliminate any potential contaminants from both virgin and reclaimed powder sources.

AeroWash™ and AeroDeck™ Air Stream

- **The AeroWash air knives use compressed air** to periodically remove settled powder from the booth floor into the high velocity Aero-Deck air stream.
- **The AeroDeck high velocity air stream** keeps airborne powder from the AeroWash air knives moving to the cyclone.
- **Automated cleaning of the gun exterior with high pressure air knives located at the automatic gun slots** eliminates disassembly and manual cleaning and helps to further speed color change time.

Booth Construction

- **Non-conductive canopy with patented Apogee® composite material** reduces powder attraction and retention for minimal powder in process.
- **The stainless steel booth floor** provides maximum durability and grounding of operators during cleaning for improved safety.

Encore Feed Center and Pump

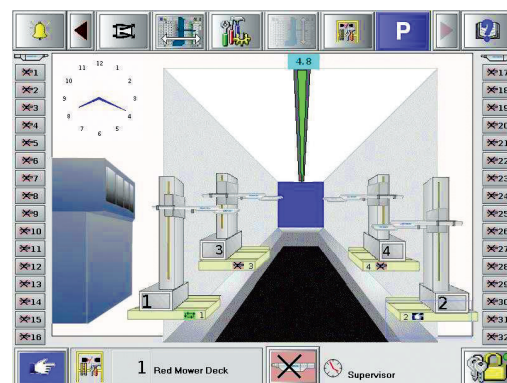
- **The Encore powder feed center** is designed for fully automatic powder delivery, recovery and color change – with maximum powder usage and minimal powder loss.
- **The Encore in-line pump** allows for quick and thorough cleaning of the entire powder delivery circuit.

Prodigy HDLV Technology

- **The Prodigy HDLV transfer pump continuously evacuates powder from the twin cyclone** resulting in maximum cyclone efficiency.
- **The high transfer output of the HDLV transfer pump** results in minimum powder in process at any given time during operation.

iControl System

- **Patented Select Charge® technology provides application-specific coating modes** for unmatched application efficiency.
- **Provides user-configurable presets** for part identification, in/out positioning of reciprocators and oscillators, as well as speed and stroke of reciprocators.
- **Closed loop digital control** for atomizing and flow rate to the pump help eliminate variations in powder flow at the gun.
- **A compact flash drive in the iControl system is used to store up to 255 user configurable presets by color or part type** for optimum repeatability of all powder application parameters.



ColorMax® 2 Booth Specifications

	FEED HOPPER VERSION	FEED CENTER VERSION
BOOTH		
Booth Base Width	1.5 m, 1.75 m, 2.0 m, 2.25 m, 2.5 m	1.5 m, 1.75 m, 2.0 m, 2.25 m, 2.5 m
Booth Base Length	4.5 m, 6.0 m, 7.5 m, 9.0 m	4.5 m, 6.0 m, 7.5 m
Booth Roller Base	Yes	Yes
Booth Canopy	Apogee®	Apogee®
Booth Cleaning Blowoff Gun	Standard	Standard
Feed Center	Not Available	Standard
Gun Cleaning Purge	Not Available	Standard
Gun Outside Blowoff	Optional	Standard
Fire Detection (FS-10R†)	Standard	Standard
POWDER DELIVERY		
Feed Center Sieve	Not Available	Standard
Vibratory Sieve	Available	Not Available
Nordson Sieve	Available	Not Available
AZO Sieve	Available	Not Available
150 lb. Hopper w/Cart	Available	Not Available
HTM Hopper	Available	Not Available
Automatic Guns (Encore®)	Standard	Standard
Cyclone Transfer	Transfer Pumps	HDLV™ Transfer System
GUN CONTROL / POSITIONER		
Auto Gun Console	Standard	Standard
Auto Gun Purge	Optional	With Feed Center
Oscillator	Optional	Optional
Reciprocator	Optional	Optional
Fixed Gun Stand	Optional	Optional
In/Out Gun Positioner* (Auto or Manual)	Optional	Optional
CONTROLS		
iControl® Integrated Control System	Optional	Optional
Encore® Auto Controller	Optional	Not Available
Smart-Coat IC	Optional	Optional
Encoder Assembly	Optional	Standard
Part ID Stand	Optional	Standard
Photo Eyes (ATC)	Optional	Standard
Light Curtain (Vertical)	Optional	Optional
Light Curtain (Horizontal)	Optional	Optional

†FS-10R is a trademark of Fire Sentry Corporation

*Varies with booth width and gun length

Why choose Nordson

In highly competitive manufacturing markets, productivity is vital and performance is essential. That's why we apply both to everything we do, whether it's our products, expertise or outstanding customer service. We'll always be there to help maintain the new standards you've set, with expert service and support delivered through our teams working across the globe.

This unique Nordson approach helps you reach new levels of production, while working more accurately, efficiently and competitively than ever. Precisely why manufacturers who demand quality, can rely on Nordson.

Performance by design

Nordson Industrial Coating Systems

100 Nordson Drive
Amherst, OH, 44001
USA

Phone: +1.440.985.4000
www.nordson.com/ics



[/Nordson_Coating](https://twitter.com/Nordson_Coating)



[/NordsonICS](https://www.youtube.com/NordsonICS)



[/company/nordson-industrial-coating-systems](https://www.linkedin.com/company/nordson-industrial-coating-systems)

Find your local Nordson office:
www.nordson.com/icslocations

