

8/10-FRAME ASSEMBLED BEEHIVE KIT



PACKAGE INCLUDE:

HIVE PARTS :



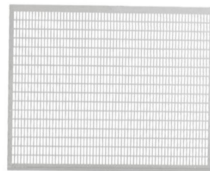
8/10-Frame
Assembled Bee Box



8/10-Frame Outer Cover
Bottom Board,
Entrance Reducer



8/10-Frame Inner
Cover



8/10-Frame Queen
Excluder



8/10* Plastic
Foundatin Sheets



8/10* Frames



Nails for Frame
Assembly



BEEKEEPING TOOL SET :

1 . BEE SMOKER

Excellent engineering design,
can maximize the amount of wind
blown out.

2 . BEEKEEPING GLOVES

Goatskin leather beekeeping gloves
offer unparalleled flexibility and
comfortable.

3 . BEEKEEPING GRIP

Reliable Stainless Steel and Wooden
handle, Convenient and durable to
use.High quality, solid and strong.

4 . FRAME HOLDER

Getting more easily to hold the
frames near beehives, Made of
Stainless Steel. No Rust.



5 . SMOKER PELLETT

Made of Chinese Natural Herb , which makes bees calm down, and healthy.



6 . UNCAPPING KNIFE

Ultrathin and sharp.And non-slip wooden handle convenient to extractor scraping honey.



7 . BEEHIVE SHOVEL

The matching of wooden handle and stainless steel handle is comfortable to hold.



8 . BEEKEEPING BRUSH

This brush is to remove bees from the hive frames during inspection. The bristles won't harm bees.



9 . J HOOK

Made of steel ,painted red ,it is very hard to bend or break,a very multi-function tool.



10 . L HOOK

The large hook end lifts the frame, and the other end is used to scrape off excess wax on the frame.



11 . UNCAPPING FORK

Sturdy moulded plastic with sharp tines
Easy to clean with hot water,soap and a brush



12 . NEW UNCAPPING FORK

Stainless steel and quality wood,smooth and not hurt the hand, more convenient to use.



13 . SPUR WIRE WHEEL EMBEDDER

The embedder used to push the wire into the wax.



14 . QUEEN CAGE*2

The beekeeping rearing cup is easy to use for catching a queen bee



15 . BEE FEEDER

Easily install in the entrance of the hive, well constructed, easy to change and to fill.



16 . BEETLE TRAP

It made from reliable plastic that is light, an effectively keep your bees safe.

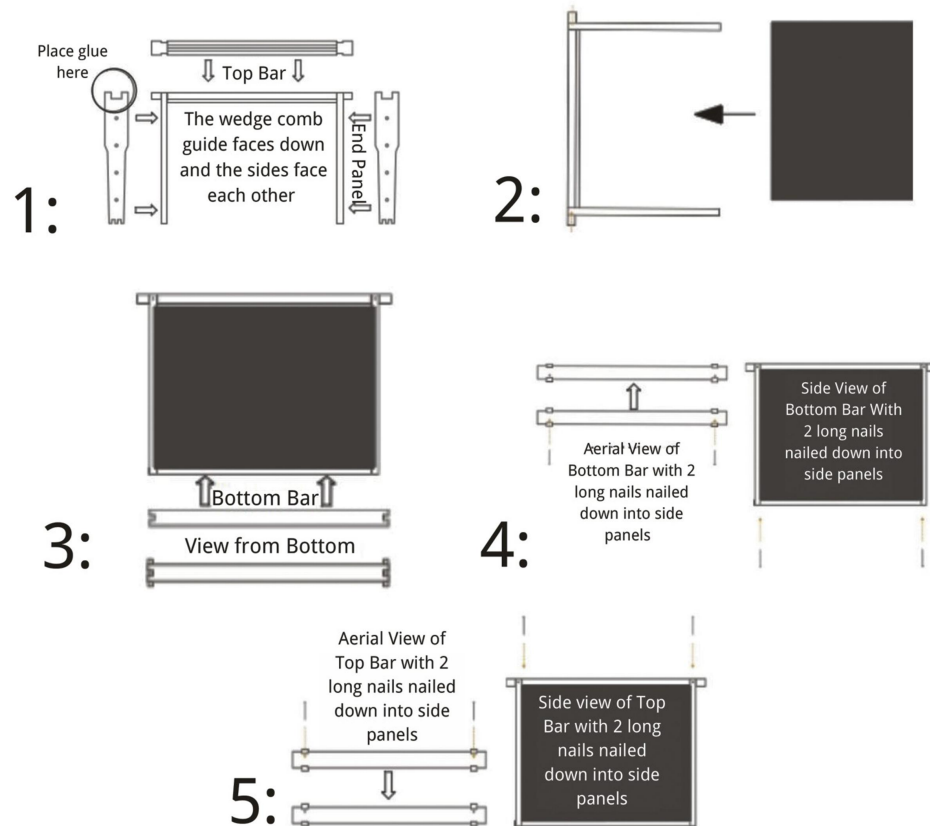


17 . QUEEN MARK TUBE

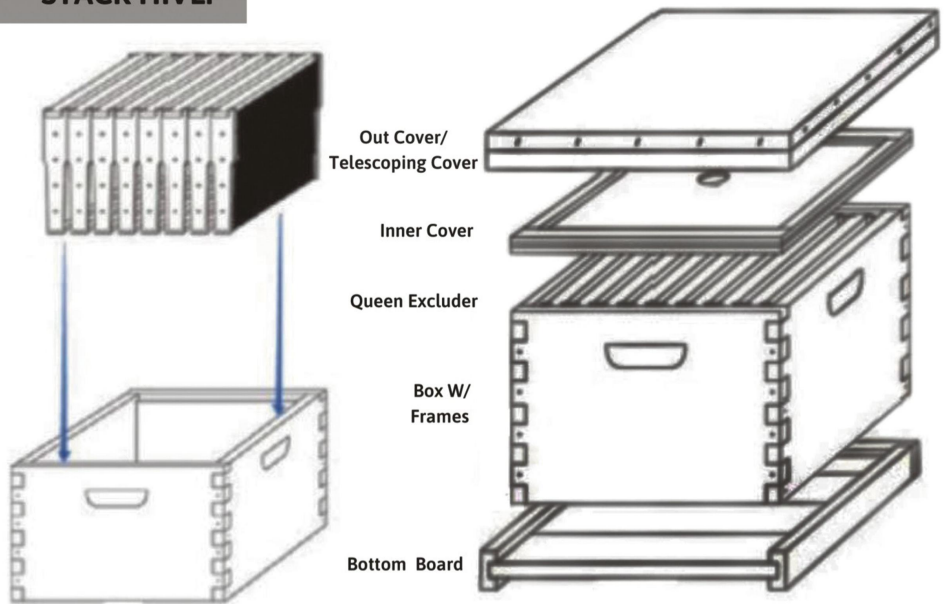
Can adjust the height of the the sponge in the marking bucket, and then using the marking tool to mark it



HOW TO ASSEMBLE THE BEEHIVE FRAME



STACK HIVE:



PLACE THE FRAMES IN THE BOXES. PUSH THE FRAMES TOGETHER IN THE MIDDLE

STACK THE HIVE PARTS IN THE ABOVE ORDER



WWW.MAYBEEHIVES.COM