

# 8/10-FRAME ASSEMBLED BEEHIVE KIT



## PACKAGE INCLUDE:

### HIVE PARTS :



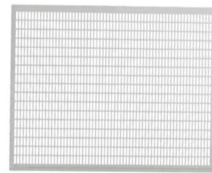
8/10-Frame  
Assembled Bee Box



8/10-Frame Outer Cover  
Bottom Board,  
Entrance Reducer



8/10-Frame Inner  
Cover



8/10-Frame Queen  
Excluder



8/10\* Plastic  
Foundation Sheets



8/10\* Frames



Nails for Frame  
Assembly



### BEEKEEPING TOOL SET :

#### 1 . BEE SMOKER

Excellent engineering design, can maximize the amount of wind blown out.

#### 2 . BEEKEEPING GLOVES

Goatskin leather beekeeping gloves offer unparalleled flexibility and comfortable.

#### 3 . BEEKEEPING GRIP

Reliable Stainless Steel and Wooden handle, Convenient and durable to use. High quality, solid and strong.

#### 4 . FRAME HOLDER

Getting more easily to hold the frames near beehives, Made of Stainless Steel. No Rust.



5 . BEE HAT

Keep out scary and annoying flying insects and bees. Lightweight and Durable.Easy to carry.



6 . UNCAPPING KNIFE

Z- Shaped with serrated design, ultrathin and sharp.And non-slip wooden handle convenient to extractor scraping honey.



7 . BEETLE TRAP\*2

TThe traps are built in a double-compartment style using high quality plastic, they do not harm any bee that comes into contact with them.



8 . BEEKEEPING BRUSH

This brush is perfect to gently remove bees from the hive frames during inspection. The special soft bristles won't harm bees.



9 . J HOOK

It has gripping teeth and to the side is a nice sharp cutting edge.The prying end isn't overly sharp and has a nice angle to it.



10 . L HOOK

The large hooked end is ideal for lifting up frames and the flat end is used to scrape off any excess wax or propolis on the frames and hive walls.



11 . MULTI - FUNCTION TOOL

The scraper is beveled to provide effective scraping without damaging the wood surface.



12 . UNCAPPING FORK

Sturdy moulded plastic with sharp tines Easy to clean with hot water,soap and a brush



13 . BEEHIVE SHOVEL

The matching of wooden handle and stainless steel handle is ergonomic and comfortable to hold.



14 . SMOKER PELLET\*2

Burn for a long time.Won't leave behind thick smoke or residue. Material safety and health.Harmless to bees.







15 . BEE FEEDER

Extended tray makes feeding more accessible inside the hive, easily install in the entrance of the hive, well constructed, easy to change and to fill.



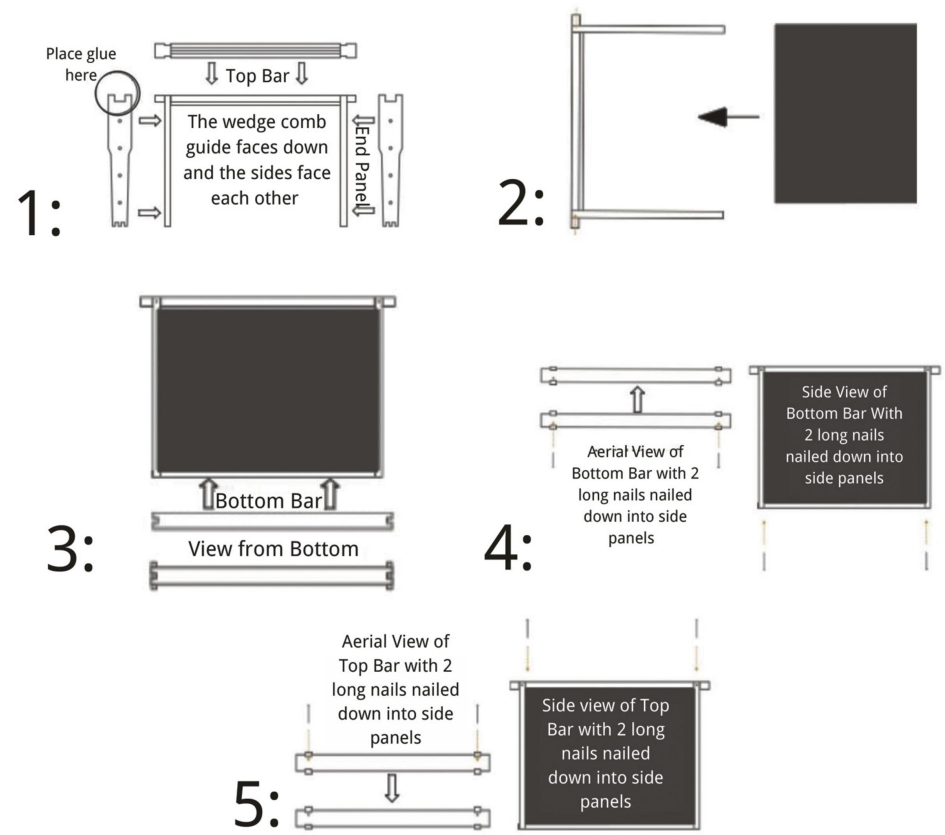
16 . ENTRANCE FEEDER

Very easy to monitor sugar syrup levels and convenient to clean, easily can be seen how much food is remained .

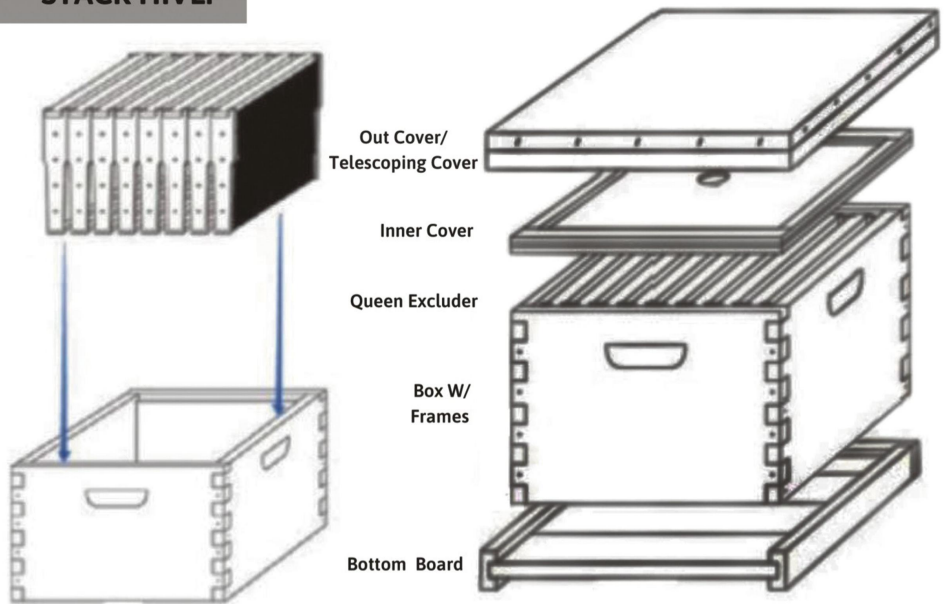
			
17 . QUEEN CAGE	18 . QUEEN CAGE	19 . SPUR WIRE WHEEL EMBEDDER	20 . QUEEN MARK TUBE
The queen cage is made from plastic, wear-resistant and durable. Lightweight and small in size, portable to carry.	This bee clip is transparent design, has a light spring and a small volume, the opening of the clip can be controlled with one hand easily.	High quality, long service life, convenient and easy to use. Wooden handle, stainless steel gear, strong and sturdy.	Can adjust the height of the the sponge in the marking bucket, and then using the marking tool to mark it.



## HOW TO ASSEMBLE THE BEEHIVE FRAME



**STACK HIVE:**



PLACE THE FRAMES IN THE  
BOXES. PUSH THE FRAMES  
TOGETHER IN THE MIDDLE

STACK THE HIVE PARTS IN THE ABOVE ORDER



**WWW.MAYBEEHIVES.COM**