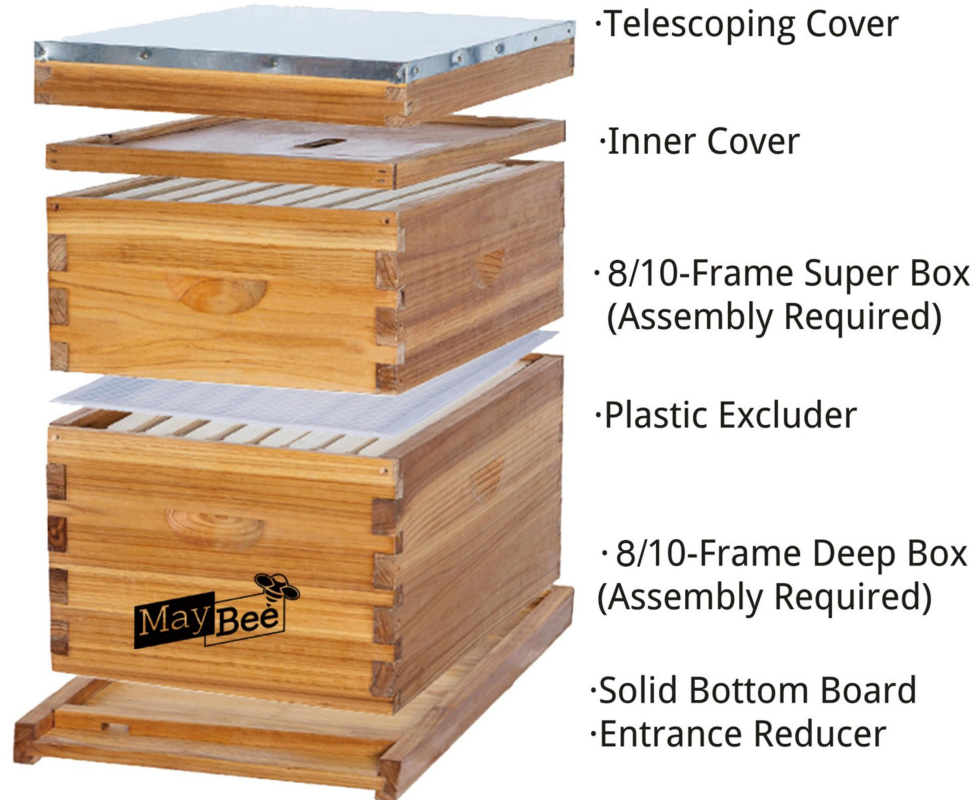




8/10-FRAME BEEHIVE(1 DEEP,1 SUPER)

PACKAGE CONTENTS :



8/10*Deep Frames & Foundations
(Assembly Required)



8/10*Medium Frames & Foundations
(Assembly Required)

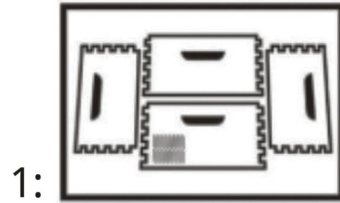


Nails for Frame



Screws for Beehive

ASSEMBLY STEPS



Put the 2 side panels and 2 end panels together to make a box (Matching boards should be across from one another.)

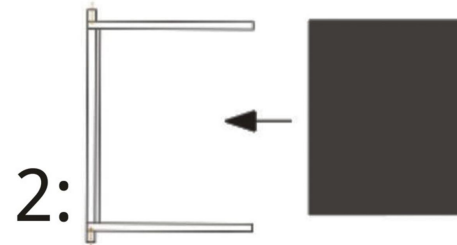
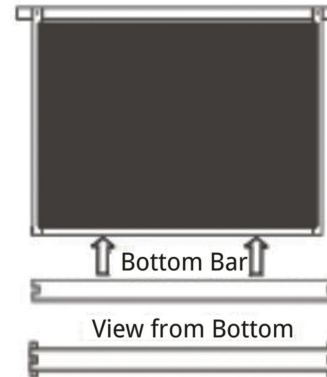
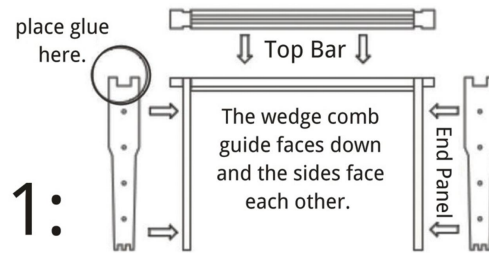


Make sure all 4 handles are facing out and towards the top

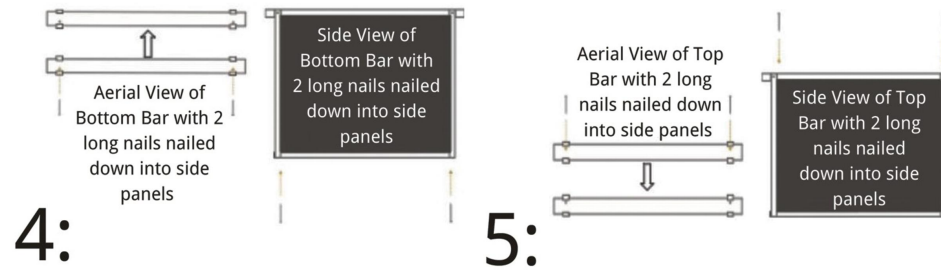


Found the Pre-drill holes (in the center of "leg" of the pre-cut joint) and use screws to fix the box

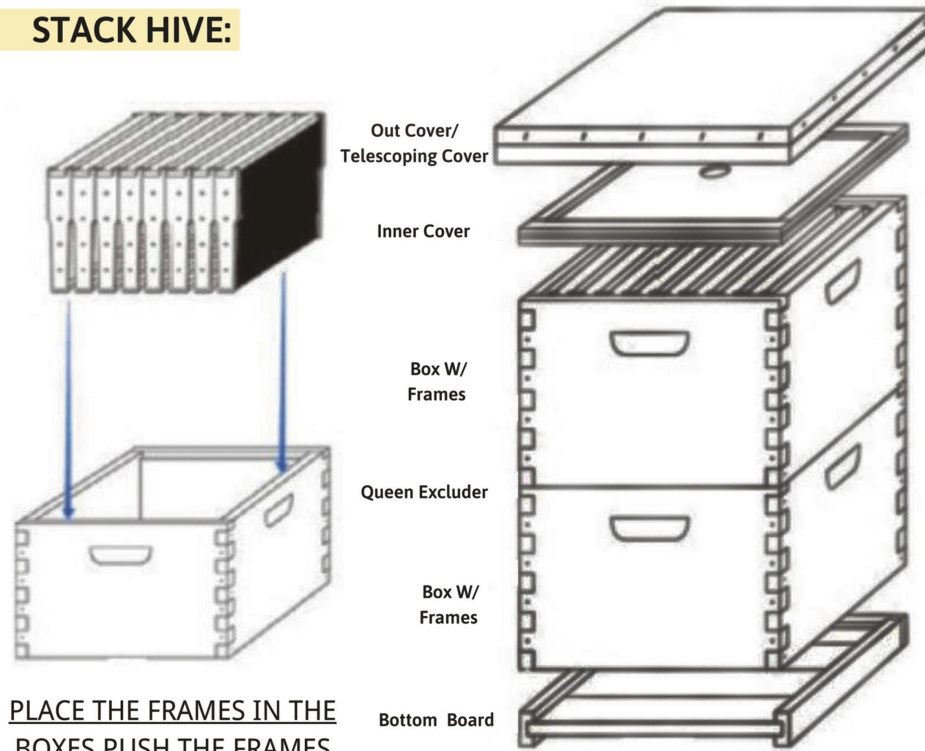
REPEAT ABOVE STEPS FOR EACH ADDITIONAL BOX. →



ASSEMBLY STEPS (TO BE CONTINUED):



STACK HIVE:



PLACE THE FRAMES IN THE BOXES. PUSH THE FRAMES TOGETHER IN THE MIDDLE

STACK THE HIVE PARTS IN THE ABOVE ORDER