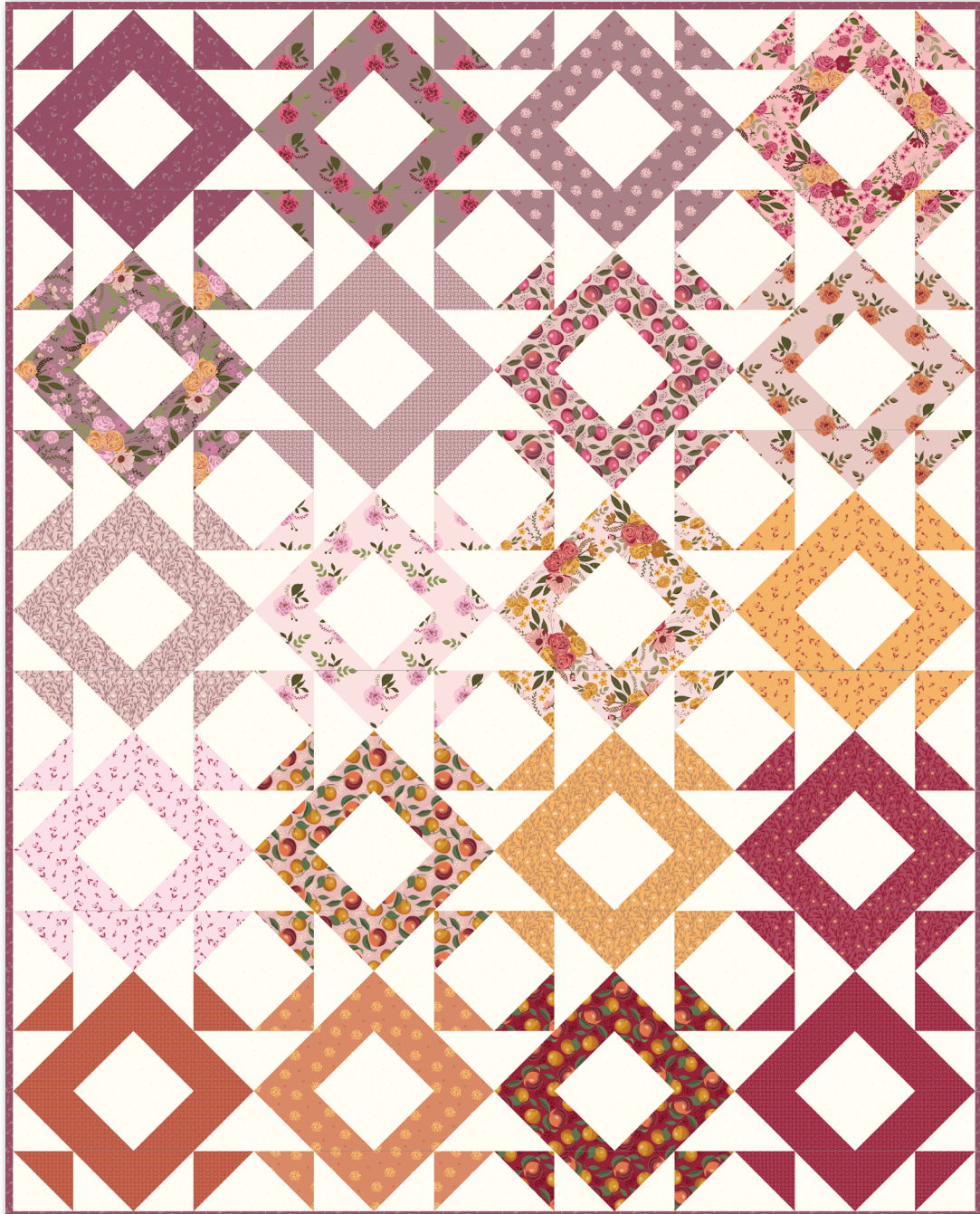


SONG OF IMAGINATION


Riley Blake
DESIGNS™



36 1/2" x 45 1/2"



= Beginner



09/01/2023

SONG OF IMAGINATION

FINISHED QUILT SIZE 36 ½" x 45 ½"

Please read all instructions before beginning the project.
Yardage calculated using a 42" usable width of fabric.

GENERAL INSTRUCTIONS

Please check our website www.rileyblakedesigns.com/pattern-updates for any revisions before starting this project. This pattern requires a basic knowledge of quilting techniques and terminology. The quilt and block diagrams portrayed are virtual images. The layout and look of your project may differ when using actual fabric.

WOF = Width of Fabric
RST = Right Sides Together
HST = Half Square Triangle
SNF = Stitch and Flip
FG = Flying Geese

FABRIC REQUIREMENTS

All fabrics are from the Petal Song collection unless otherwise indicated.

1 Petal Song Fat Quarter Bundle (FQ-13710-21)
1 ½ yards Dapple Dot Tone-on-Tone Cream (C650-CREAM)
½ yard Wine Tossed Posies (C13713-WINE)*

*Binding

OTHER SUPPLIES

1 ¼ yards WIDEBACK backing fabric of your choice
Basic Sewing Supplies
Batting (44 ½" x 53 ½")

CUTTING INSTRUCTIONS

Please read all pattern instructions before cutting fabrics.
Use a straight edge ruler and rotary cutter to cut your fabrics and label all cuts as noted.

Fat Quarter Bundle

From (20) Fat Quarters:

Cut (1) 3 ¼" x 22" strips; subcut:
(2) 3 ¼" x 3 ¼" squares, label A.
(4) 2 ¾" x 2 ¾" squares, label B.

Cut (1) 6" x 22" strip; subcut:
(1) 6" x 6" square, label C.



Dapple Dot Tone-on-Tone Cream

Cut (3) 5" x WOF strips; subcut:
(20) 5" x 5" squares, label D.
(4) 3 ¼" x 3 ¼" squares, label E.
Cut (3) 3 ¼" x WOF strips; subcut:
(36) 3 ¼" x 3 ¼" squares, label E.
Cut (7) 3 ⅜" x WOF strips; subcut:
(80) 3 ⅜" x 3 ⅜" squares, label F.



Wine Tossed Posies

Cut (5) 2 ½" x WOF strips, put aside for binding.

ASSEMBLY INSTRUCTIONS

SEWING TECHNIQUES

Measurements include ¼" seam allowance. Sew with right sides together unless otherwise stated. Refer to the quilt diagram for placement of the prints. Press seams as shown by the arrows in each diagram or as described in each step for best results. Dimensions listed in steps are unfinished sizes unless stated otherwise.

Some angled pieces are constructed using the Stitch and Flip, 2-At-A-Time Half Square Triangles, 4-At-A-Time Half Square Triangles, and 4-At-A-Time Flying Geese methods. These methods are described below and referenced throughout the pattern.

STITCH AND FLIP METHOD (SNF)

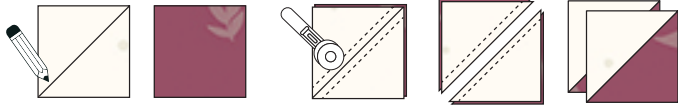
Place (2) pieces RST, matching raw edges in the corner to be replaced. Draw a diagonal line on the wrong side of the smaller piece across the corner. Stitch on the drawn line. Trim the seam allowance above the sewn line to ¼". Flip the small piece away from the bottom piece and press, replacing the corner. The size of the larger, original piece does not change.



SONG OF IMAGINATION

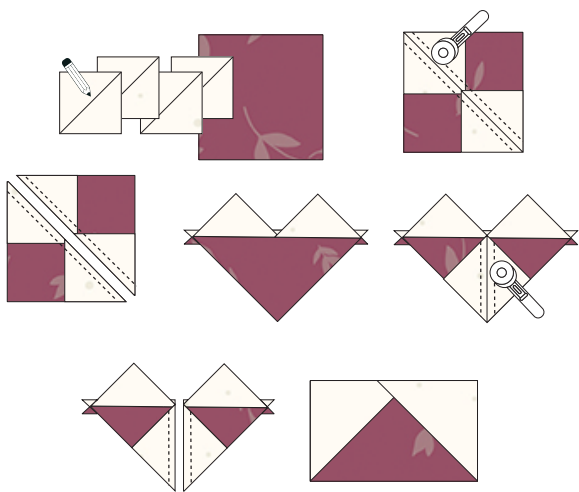
2-AT-A-TIME HALF SQUARE TRIANGLE METHOD (HST)

Place (2) squares RST. Draw a diagonal line on the wrong side of one square. Stitch $\frac{1}{4}$ " on each side of the drawn line. Cut on the drawn line to create (2) HSTs. Press toward the darker fabric. Trim HSTs to desired size.



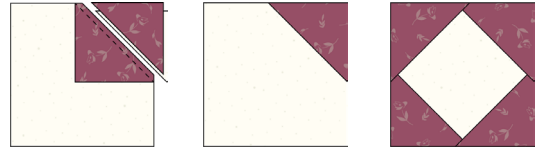
4-AT-A-TIME FLYING GEESE (FG)

Take (1) large square and (4) smaller squares. Draw a diagonal line from corner to corner on the wrong side of each of the smaller squares. Place (2) smaller squares, RST, diagonally on the larger square, matching raw edges in the corners. The smaller squares will overlap and the diagonal lines should form one long line. Sew $\frac{1}{4}$ " on each side of the drawn line. Cut on the drawn line. Flip the smaller triangles away from the bottom triangle and press seams open. Take (1) sub unit just created and place (1) small square, RST, on the larger square, matching raw edges in the corner. Sew $\frac{1}{4}$ " on each side of the drawn line. Cut on the drawn line. Repeat with the remaining subunit and small square. Press seams open and trim to the desired size.

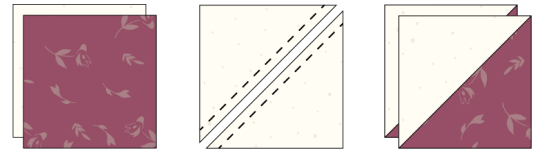


BLOCK ASSEMBLY

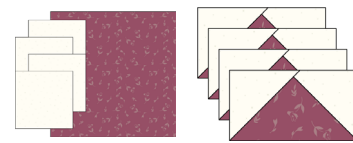
1. Using the SNF method, replace all (4) corners of a D square with a B square.



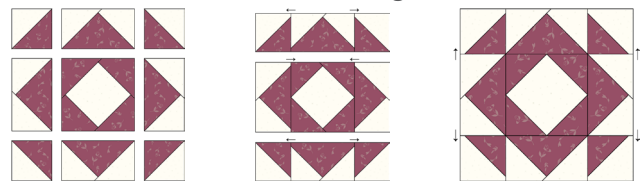
2. Using the HST method, pair (1) E square with (1) A square. Trim to $2\frac{3}{4}$ " square. Make (4) total HST Units.



3. Using the FG method, pair (1) C square and (4) F squares to make (4) FG units. Trim to $2\frac{3}{4}$ " x 5".



4. Lay out the block as shown. Sew the units together to make rows and sew the rows together to make a block.



Your block should measure $9\frac{1}{2}$ " x $9\frac{1}{2}$ " unfinished.

5. Repeat to make (20) blocks total.

QUILT ASSEMBLY

6. Lay out your quilt top as shown in the Quilt Layout Diagram. Sew together the blocks to make rows and sew the rows together to make the quilt top. Your quilt top should measure $36\frac{1}{2}$ " x $45\frac{1}{2}$ " unfinished.

FINISHING INSTRUCTIONS

Finish quilt by layering the quilt top, batting, and backing. Baste quilt layers together and quilt as desired. Bind with the (5) Wine Tossed Posies strips.

Enjoy and share your quilt using the hashtags [#petalsongfabric](#), [#songofimaginationquilt](#), [#rileyblakedesigns](#) and [#iloverileyblake](#).

SONG OF IMAGINATION

QUILT LAYOUT DIAGRAM

Finished Size: 36 1/2" x 45 1/2"

