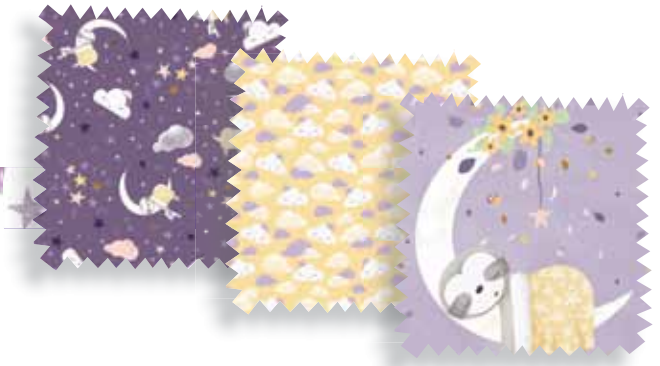


# Sleepy Sloth

Quilt Design by Stacey Day



Quilt size: approximately 54" x 62"

Featuring fabrics from  
*Sleepy Sloth by Debbie Monson*



P&B Textiles • pbtex.com • 800-351-9087 • 208 Clock Tower Square, Portsmouth, RI 02871

# Sleepy Sloth

Fabric collection by Debbie Monson

Dreaming quilt designed by Stacey Day

Skill level: Experienced Beginner • Finished Quilt Size: approximately 54" x 62"

## Quilt Yardages:

|  |             |
|--|-------------|
| Fabric A: <b>SSOL 5193 PA-C</b> .....        | 1 panel     |
| Fabric B: <b>SSOL 5194 CC</b> .....          | 2/3 yard    |
| Fabric C: <b>SSOL 5195 Y</b> .....           | 1/2 yard    |
| Fabric D: <b>SSOL 5197 C</b> .....           | 1 yard      |
| Fabric E: <b>SSOL 5196 Y</b> .....           | 5/8 yard    |
| Backing: <b>SSOL 5194 CC suggested</b> ..... | 3 1/2 yards |
| Batting .....                                | 62" x 70"   |

## Cutting Instructions:

*Please read all instructions carefully before beginning. Strips are cut across the width of fabric (perpendicular to selvages) unless otherwise stated. All seams are sewn with a 1/4" seam unless otherwise stated. Label all pieces.*

### From Fabric A:

1. Cut one 34 1/2" x 42 1/2" rectangle from panel, centering design.

### From Fabric B:

1. Cut six 3 1/2" strips. Sew strips together end to end with diagonal seams. Trim seams to 1/4" and press open. From this pieced strip, cut two 3 1/2" x 49 1/2" strips and two 3 1/2" x 51 1/2" strips. (3rd Border)

### From Fabric C:

1. Cut five 1 1/2" strips. Sew strips together end to end with diagonal seams. Trim seams to 1/4" and press open. From this pieced strip, cut two 1 1/2" x 43 1/2" strips and two 1 1/2" x 49 1/2" strips. (2nd Border)
2. Cut five 1 1/2" strips. Sew strips together end to end with diagonal seams. Trim seams to 1/4" and press open. From this pieced strip, cut two 1 1/2" x 51 1/2" strips and two 1 1/2" x 57 1/2" strips. (4th Border)

### From Fabric D:

1. Cut five 4" strips. Sew strips together end to end with diagonal seams. Trim seams to 1/4" and press open. From this pieced strip, cut two 4" x 41 1/2" strips and two 4" x 42 1/2" strips. (1st Border)
2. Cut six 2" strips. Sew strips together end to end with diagonal seams. Trim seams to 1/4" and press open. From this pieced strip, cut two 2" x 54 1/2" strips and two 2" x 59 1/2" strips. (5th Border)

### From Fabric E:

1. Cut seven 2 1/2" strips. (Binding)

## Piecing Instructions:

 Refer to Quilt Diagram.

1. Sew one 4" x 42 1/2" D strip to each side of 34 1/2" x 42 1/2" A rectangle. Press. Sew one 4" x 41 1/2" D strip to the top and bottom. Press.
2. Sew one 1 1/2" x 49 1/2" C strip to each side of the quilt center. Press. Sew one 1 1/2" x 43 1/2" C strip to the top and bottom. Press.
3. Sew one 3 1/2" x 51 1/2" B strip to each side of the quilt center. Press. Sew one 3 1/2" x 49 1/2" B strip to the top and bottom. Press.
4. Sew one 1 1/2" x 57 1/2" C strip to each side of the quilt center. Press. Sew one 1 1/2" x 51 1/2" C strip to the top and bottom. Press.
5. Sew one 2" x 59 1/2" D strip to each side of the quilt center. Press. Sew one 2" x 54 1/2" D strip to the top and bottom. Press.

## Finishing:

1. Prepare backing with two widths of fabric using horizontal seam/s. Press seams open and trim backing to 62" x 70".
2. Layer quilt, batting, and backing. Baste layers together.
3. Quilt as desired.
4. Trim layers even with quilt top squaring corners.
5. Join seven 2 1/2" E binding strips with diagonal seams. Press seams open. Attach binding using your favorite method.
6. Make a label and sew to the back of the quilt.



*Quilt Diagram*

# Sleepy Sloth

Fabric Collection by Debbie Monson



SSLO 5193 PA-B



SSLO 5193 PA-C\*



SSLO 5194 CC\*†



SSLO 5194 DB



SSLO 5195 G



SSLO 5195 Y\*



SSLO 5196 G



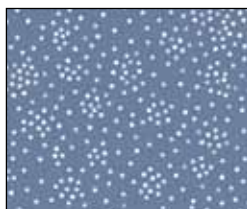
SSLO 5196 WB



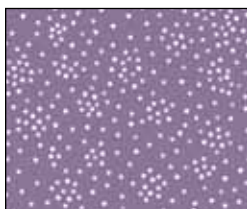
SSLO 5196 WC



SSLO 5196 Y\*



SSLO 5197 B



SSLO 5197 C\*



SSLO 5197 WG



SSLO 5197 WY



\*Fabrics used in quilt.

†Backing