



iReliev®

iReliev® Relaxable™ Foot Massager Ottoman



## INDICATIONS

Read this instruction manual before operation. Be sure to comply with all CAUTIONS and WARNINGS in this manual. Failure to follow and implement according to the use and operating instructions can cause harm to the user or device.

**This device is suitable for physical massage to temporarily relieve pain and reduce soreness.**

## WARNING

The iReliev® Relaxable™ Foot Massager Ottoman is not intended for medical use. Consult your doctor prior to using this product if you are pregnant, have a pacemaker or if you have any concerns regarding your health. This Foot Massager is NOT recommended for use by diabetics. Never leave the Foot Massager unattended while in use, especially if children are present. DO NOT use this product for more than 20 minutes at a time.

<b>Model Numbers</b>	<b>Color</b>
Model # MA-8000-GR	Gray
Model # MA-8000-BL	Blue
Model # MA-8000-PK	Pink



## **Thank you for purchasing the iReliev® Relaxable™ Foot Massager Ottoman!**

Please read this manual carefully before use to ensure proper operation and use. Please keep this manual in a safe place for future reference.

### **TABLE OF CONTENTS**

Warnings.....	2-3
What's Included.....	4
About Rechargeable Batteries.....	5
Product Description.....	6-7
After Use & Specs.....	8
Troubleshooting.....	9
You may also like.....	10-15

## **⚠ WARNINGS**

To reduce the risk of malfunction, electric shock, injury, fire, death, and equipment damage, please read all instructions and warnings in this manual carefully before using this product.

- 1.** Do not operate the controller with wet hands or pull on the controller wire.
- 2.** Do not splash water on the controller. It could cause malfunction.
- 3.** Do not place heavy objects on top of the controller.
- 4.** Do not use adapters outside of the original factory to avoid fire or damage to the product.
- 5.** Do not charge the product for more than 3 hours at a time.
- 6.** Do not plug in the adapter with wet hands.
- 7.** Do not place the product into a fire or near any fire source.
- 8.** Remove the adapter by grasping the plug and pulling it from the adapter. Do not remove adapter by pulling on the wires.
- 9.** Do not squeeze the adapter wires.
- 10.** Do not disassemble this product in any way.
- 11.** When the adapter wire is damaged, do not disassemble or replace it without permission.
- 12.** Do not use this product in temperatures below 32 F.
- 13.** Do not use this product in damp or dusty environments to avoid electrical shock or machine failure.
- 14.** Do not use during a lightning strike. Unplug the adapter from the power socket during severe weather.
- 15.** Do not place the product on uneven ground for use.
- 16.** Do not disassemble the internal components of this product to avoid the possibility of machine failure. Please contact our customer support if you encounter an error.
- 17.** Remove the power plug from the socket after use and when not in use.
- 18.** In case of power failure, immediately cut off the power switch and unplug the power plug from the socket.
- 19.** Best results occur in individuals weighing up to 265 lbs.
- 20.** Do not use other therapeutic equipment while using this product.
- 21.** This product can only be used by one person. Do not use with two or more people at the same time.

22. When using this product, please remove jewelry or other loose items from around the ankles.
23. Before use, please confirm that the fabric on all contact parts is not damaged. If there is any damage, please stop using immediately and contact customer service.
24. The product cannot be used while it is charging.
25. If you feel any physical abnormalities during use, please stop using product immediately and consult your doctor.
26. Make sure there are no animals or other items in the main machine before use.
27. Charge the battery every 60 days, even when not in use, to avoid damage to the battery.
28. Do not stand on this product to avoid injury or malfunction.
29. Do not push or pull this product on floors and carpets that are easily damaged.
30. Product must be kept in a well-ventilated area.

**NOTE:**

Do not use this product without your physician's consent if you have a serious health condition that could be contraindicated.

## WHAT'S INCLUDED?

### Contents:

- iReliev® Relaxable™ Foot Massager Ottoman
- Wall charger



## **ABOUT RECHARGEABLE BATTERIES**

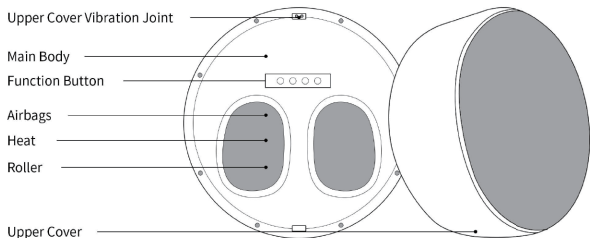
- Disconnect the device from the power supply before removing the battery.
- Remove the battery from the device.
- Dispose of battery properly.

### **WARNING:**

For the purposes of recharging the battery, only use the detachable supply unit provided with this appliance.

Do not allow children play with or use this appliance.

# PRODUCT DESCRIPTION



## OPERATION GUIDE



### Power Connection

Lithium battery design, in the case of sufficient power, no need to connect the adapter for use; If the power is low, it can be used after charging.



### Upper Body Function

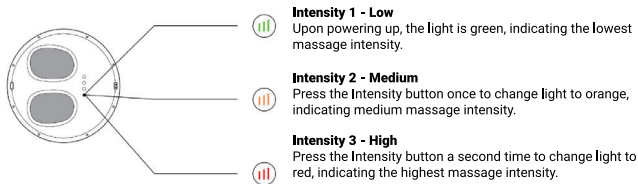
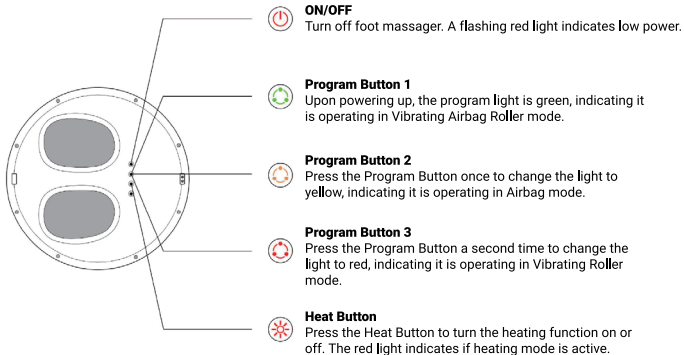
Under the condition that the upper cover is closed, the upper cover cushion can be used for vibration massage.



### Foot Massager

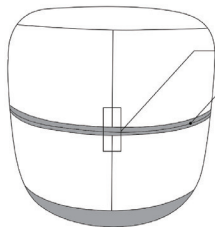
Remove upper cover to access foot massager.





**Upper Cover Massage Button**  
Close the cover before pressing the upper cover massage button.

## AFTER USE INSTRUCTIONS



Align the joint of the top cover with the joint of the main engine base.

Make sure top cover and main engine base are fully closed .

**\*If the upper and lower cover are not fully closed, the machine and outer cover may be damaged.**

## SPECIFICATIONS

Product Name: iReliev® Relaxable™ Foot Massager Ottoman	Rated Voltage: 110-220v
Package Size: 17.9" x 17.9" x 17.9"	Rated Power: 50/60Hz
Color Choice: Grey/Pink/Blue	Noise: 55dB
GW: 26.5 lbs	Charging time: About 3 hours
NW: 22 lbs	Weight capacity: 265 lbs
Intended for use by adults 18 and over	

## TROUBLESHOOTING GUIDE

Problems/Issues	Problems/Issues	Troubleshoot Method
Sounds like tapping or humming noise	The sound of the motor working normally, or the friction between the massage wheel and the cloth cover	Normal
Unable to turn on	No or low Battery	Install or charge battery

For problems not described above: Please turn off power supply and contact our Customer Service Department by calling **855-723-2582** or emailing **WeCare@iReliev.com**

### **NOTE:**

Do not dismantle the product by yourself. We are not responsible for damage of the product, or persons, caused by improper use. Thank you for your cooperation.

During the first year of use for the product, please routinely check for the following:

- Burnt smell
- Abnormal electrical behavior
- Overheated power cord
- Other abnormal phenomenon

If any of the above issues occur, please turn the machine off and/or unplug it from the power source to prevent the occurrence of power faults and accidents. Contact Customer Service for further assistance.

YOU MAY ALSO LIKE THESE OTHER  
IRELIEV® PRODUCTS

Wireless

## Premium TENS + EMS Therapeutic Wearable System

Experience the freedom of wireless TENS + EMS muscle stimulation coupled with powerful medical-grade strength technology and a low-profile design. The convenience and simplicity of this system make it the clear leader within the iReliev® line-up of pain relief and muscle stimulation devices.

Model # ET-5050





Wired

## Premium TENS + EMS Pain Relief & Recovery

Our best-selling 2-in-1 Pain Relief & Recovery System just got better. It combines the best features of our previous TENS + EMS system with the added benefits of rechargeability and an extra-large lighted digital display.



Model # ET-8080



Reusable & Versatile

## Hot & Cold Therapy Gel Pack

Soothe your strains and pain with our reusable microwaveable hot/cold pack. Heated or frozen, our product stays flexible for ease of use. Our packs are made of soft-touch vinyl. Use the included velcro strap to secure the pack to your arm or leg.



Comes in 3 sizes



Joint & Muscle Ache Relief

## Pain Relief Roll-on Gel

We know you will love our formulated all-natural Pain Relief Gel. It is perfect for soothing aches and pains or just sore muscles. It comes in your choice of 3 oz. Roll-on or single-use packets. Try it today.



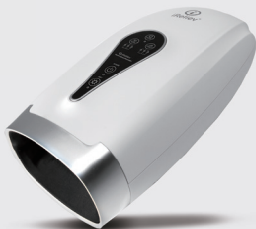
Model # TO-3RO



Relief and Relaxation

## Hand & Wrist Massager

You will enjoy this gentle, warming massage. It is perfect for soothing arthritis, carpal tunnel syndrome, and general fatigue or achiness from overuse.



Model # MA-7000-WH

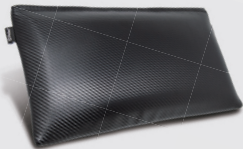




Relaxable™ Series

## Pillow Massager

This stylish lumbar pillow comes in your choice of four colors and features breathable fabric on the back in a coordinating solid color. The classic design makes it the perfect accent for any home or office decor.



Comes in 4 colors



**iReliev**<sup>®</sup>

ExcelHealth Inc.

**www.iReliev.com**

5825 Park Vista Circle  
Fort Worth, TX 76244

If you have questions about your  
**iReliev® Relaxable™ Foot Massager Ottoman**  
Contact your Reseller or ExcelHealth Inc. at:  
855-723-2582 or visit [www.iReliev.com](http://www.iReliev.com)

