

EC DECLARATION OF CONFORMITY

1. Unique identification number of the toy:

GEM1JPUKAW2015

2. Name and address of the manufacturer or his authorised representative:

Name: Kukka

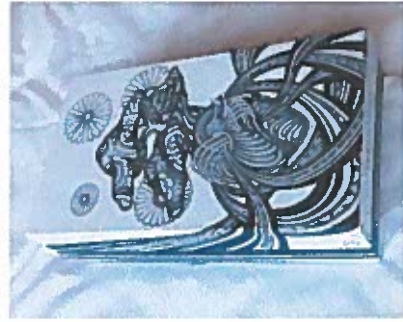
Address: KURKIA CO., LTD. 1-14-24 #901 KYOMACHIBORI, NISHI-KU, OSAKA CITY, OSAKA, JAPAN 550-0003

3. This declaration of conformity is issued under the responsibility of the brand "Twoodie" in accordance with the manufacturer.

Name: Twoodie Public Benefit Corporation

Address: Unit 2191, PO Box 6945, London, W1A 6US

4. Object of the declaration:



(Images on paper may vary)

Each product GEM1JPUKAW2015 contains:

12 x wooden gems, 1 x velvet bag with ribbon, 1 x printed cardboard box, tissue paper, paper inserts (care instructions and product info)

Product Name:	Product description
Woodie Wooden Gems	12 piece wooden block set in emerald gemstone shape
Identification number GEM1JPUKAW2015	4 different species of wood: US Oak, US Cherry, Japanese Zelkova, US Walnut

5. The object declaration described in point 4 is in conformity with the relevant EU harmonization legislation:

EN71-1:2014	
EN71-2:2011+A1:2014	
EN71-3:2013+A1:2014	
EN 14362-1	
EN 14362-3	
Packaging (94/62/EC)	EPA 3052
	EPA 3060A
	EPA 7196A

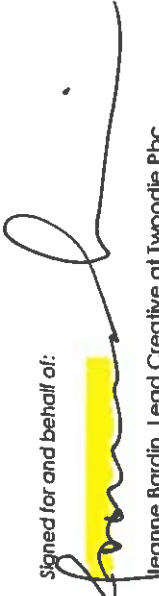
6. References to the relevant harmonized standards used, or references to the specification to which conformity is declared:

Standard	Version	Report Number	Date of issue	Testing Lab
EN 71-1	EN71-1:2014	S1504906	13-Oct-15	STS
EN 71-2	EN71-2:2011+A1:2014	S1504906	13-Oct-15	STS
EN 71-3	EN 71-3:2013+A1:2014	S1504906	13-Oct-15	STS
EN 71-1	2011+A3:2014 (exclude clause 6.7)	S1503070	11-Aug-15	STS
EN 71-2	2011+A1:2014	S1503070	11-Aug-15	STS
EN 71-3	2013+A1:2014	S1503070	11-Aug-15	STS
EN 14362-1	EN 14362-1:2012 solvent extract and determined by GC/MS and HPLC	S1503070	11-Aug-15	STS
EN 14362-3	EN 14362-3:2012, solvent extract and determined by GC/MS and HPLC	S1503070	11-Aug-15	STS
EPA 3052	Referring to EPA 3052-1996	S1503645	15-Sep-15	STS
EPA 7196	Referring to EPA 7196A-1992	S1503645	15-Sep-15	STS

EPA 3060	Referring to EPA 3060A-1996	S1503645	15-Sep-15	STS
----------	-----------------------------	----------	-----------	-----

7. Additional information:

Reference	Version	Report Number	Date of Issue	Testing Lab	Contact
Packaging (94/62/EC) :	Cadmium, Lead, Mercury and Total Chromium referring to EPA 3052-1996, determined by Inductively Coupled Plasma - Atomic Emission Spectrometry(ICP-AES).	S1503070	11-Aug-15	STS	STSenquiry@stseservice.com, tel +86 (0) 755-8285 6835
EPA 3052 Heavy Metals Content in Packaging Material European Parliament and Council Directive 94/62/EC	Chromium(VI) referring to EPA 3060A-1996 + EPA 7196A-1992, determined by spectrophotometer	S1503070	11-Aug-15	STS	STSenquiry@stseservice.com, tel +86 (0) 755-8285 6835
EPA 3060A Heavy Metals Content in Packaging Material European Parliament and Council Directive 94/62/EC	Chromium(VI) referring to EPA 3060A-1996 + EPA 7196A-1992, determined by spectrophotometer	S1503070	11-Aug-15	STS	STSenquiry@stseservice.com, tel +86 (0) 755-8285 6835
EPA 7196A Heavy Metals Content in Packaging Material European Parliament and Council Directive 94/62/EC	Cadmium, Lead, Mercury and Total Chromium referring to EPA 3052-1996, determined by Inductively Coupled Plasma - Atomic Emission Spectrometry(ICP-AES).	S1503645	15-Sep-15	STS	STSenquiry@stseservice.com, tel +86 (0) 755-8285 6835
Heavy Metals Content in Packaging Material European Parliament and Council Directive 94/62/EC	Chromium(VI) referring to EPA 3060A-1996 + EPA 7196A-1992, determined by spectrophotometer	S1503645	15-Sep-15	STS	STSenquiry@stseservice.com, tel +86 (0) 755-8285 6835

Signed for and behalf of: 
 Jeanne Bardin, Lead Creative at Twoodie Pbc