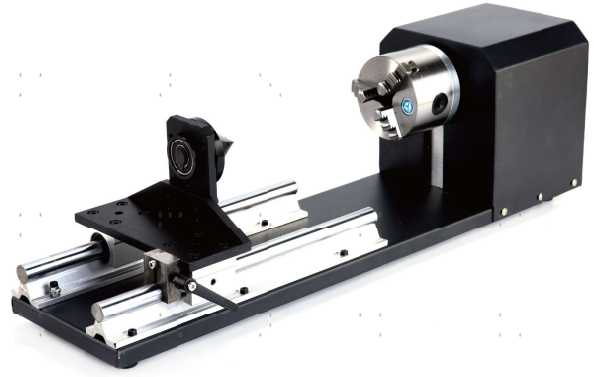


# Laser Engraving Rotary Axis



## Safety Information

- Keep this device clean and free of potentially flammable or reflective dust and swarf.
- **DO NOT** place body parts in or near the engraving path.
- **ALWAYS** wear appropriate personal protective equipment such as protective eyewear when operating your laser. If this device is being used on an open bed, it is also recommended to secure the worksite or erect protective screens around the laser path to prevent injury to passersby.
- **DO NOT** use this device with items too wide for its chuck or too long for its rail.
- **DO NOT** assemble or disassemble this device without proper training.

## Specifications

Input Voltage	24 V
Rated Power	46 W
Swing over Bed	9.5 cm (3.7 in.)
Bed Length	58 cm (22.8 in.)
Bed Width	15 cm (6 in.)
Carriage Travel Range	0–30 cm (0–11.8 in.)
Chuck Diameter	7.9 cm (3.1 in.)
Chuck Clamping Range	0–3 cm (0–1.1 in.)
Spindle Bore Diameter	1.5 cm (0.6 in.)
Product Dimensions	15×58×18 cm (6×22.8×7 in.)
Net Weight	9 kg (19.8 lb.)

## Installation

1. Place this rotary axis on the workbed. Ensure that the placement allows the laser head to move along the full range of its X axis without obstruction.
2. Connect the rotary device's connection to the Y-axis port inside the engraver or the rotary axis port behind your engraver.

## Operation

1. Expand the chuck's clamp by inserting its key and turning anti-clockwise.
2. Place your workpiece into the chuck. Secure it in place by closing the chuck around it, turning the check key clockwise.
3. Slide the tailstock to the end of your workpiece & secure it in place by rotating its lever clockwise.
4. Use your engraver's control panel or your engraving software to add your design.

## Maintenance

- Clean this device with a soft moist cloth to remove any dust or debris that may accumulate. Allow time for any moisture to air dry before further use.
- Apply a thin layer of lubricant to the chuck and spindle bore after cleaning.

## Contact Us

Thank you for choosing our products! If you have any questions or comments, contact us at [help@cs-supportpro.com](mailto:help@cs-supportpro.com) and we'll resolve your issue ASAP!

For a .pdf copy of the latest version of these instructions, use the appropriate app on your smartphone to scan the QR code to the right.

