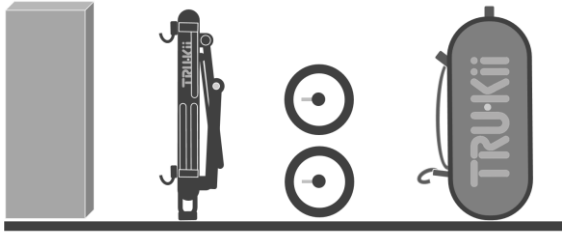
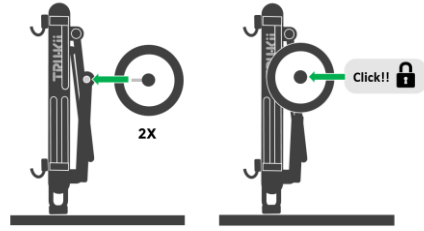


1. BOX CONTENT AND ASSEMBLY

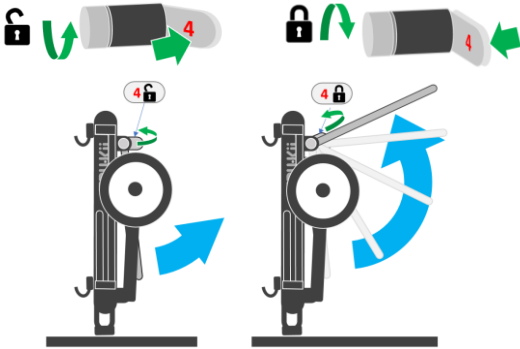


Remove product from packaging.

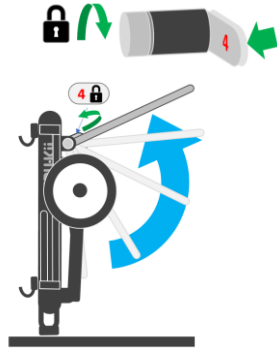


Attach wheels.

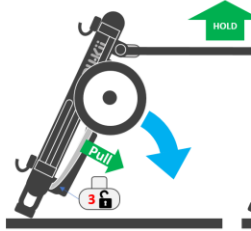
2. UNFOLDING FOR USE



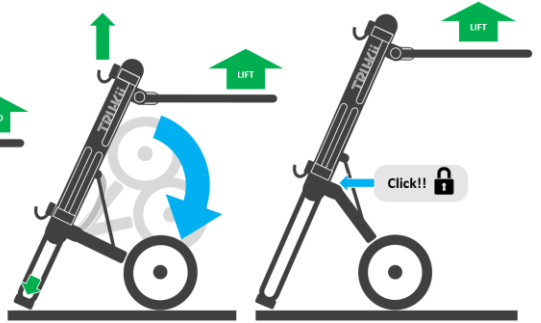
Unlock handle **4**.



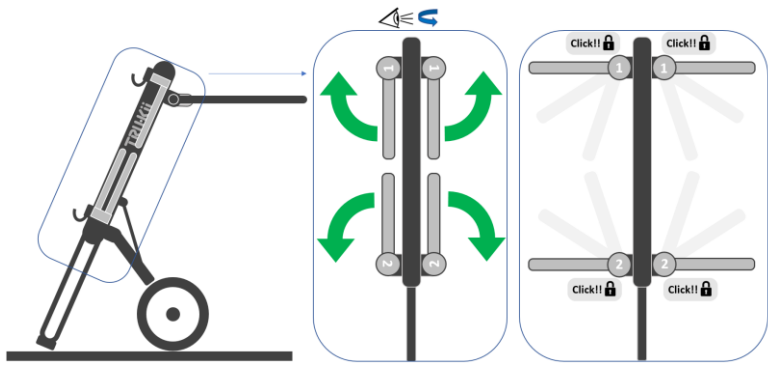
Adjust handle then lock **4**.



Release leg lock **3** by pulling strap

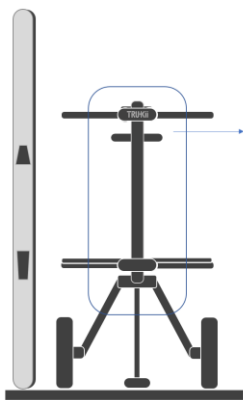


Lift frame as legs unfold. Legs lock when fully open.

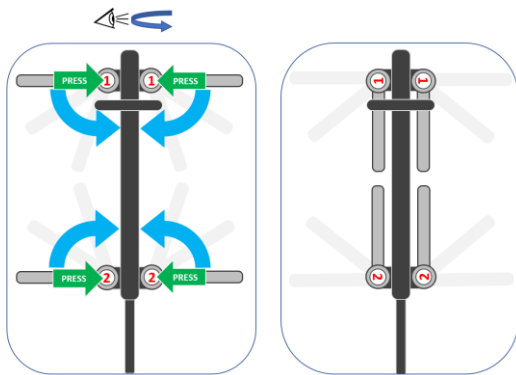


Unfold ski support arms 1 and 2 until they click in place.

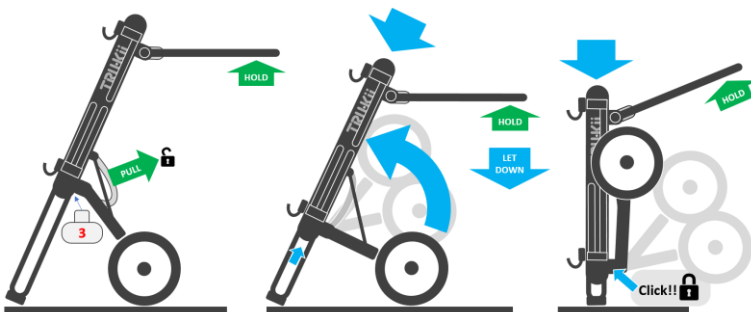
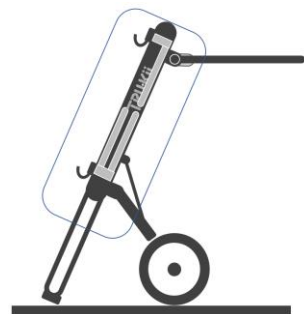
3. FOLDING FOR STORAGE



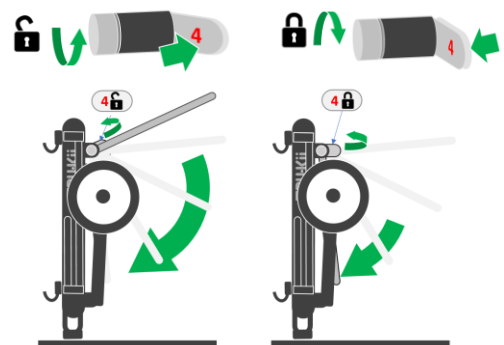
Remove all skis from cart.



Press **1** & **2** to fold ski support arms.

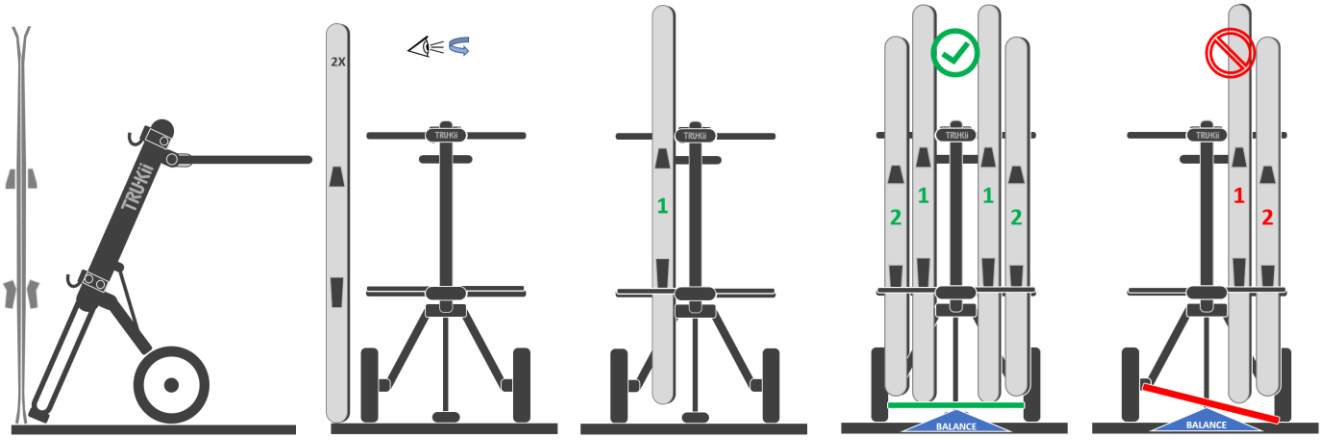


Pull lever **3** webbing strap to release frame lock. Support handle while allowing frame to collapse down as wheels fold up.



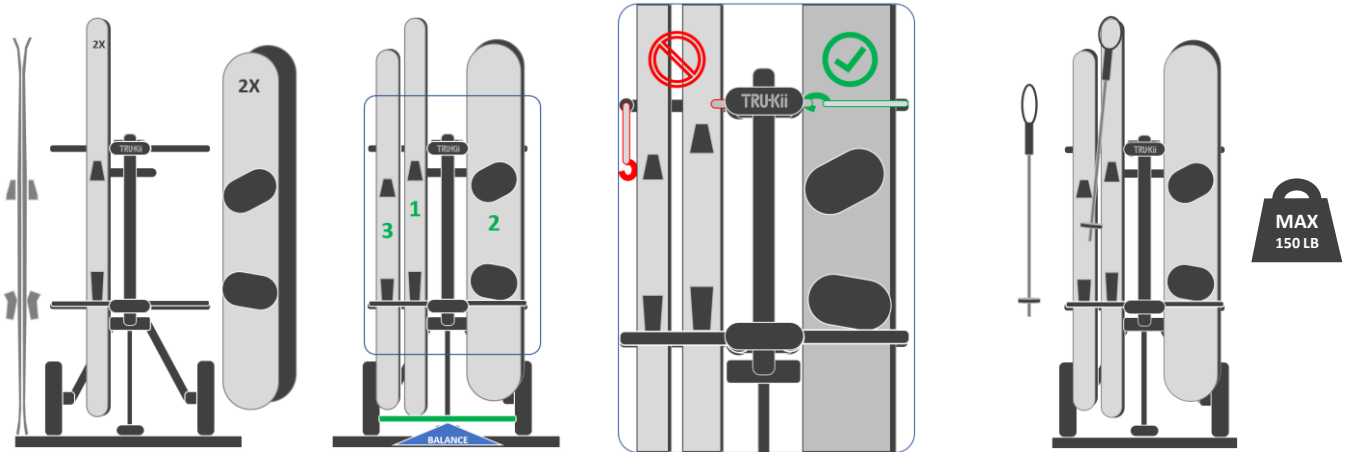
Unlock handle **4**. Loosen dial and fold handle down. Tighten dial and relock handle **4**.

4. LOADING SKIS AND SNOWBOARDS



Load heavier skis first. Place them closest to center of cart.

Load evenly to balance weight

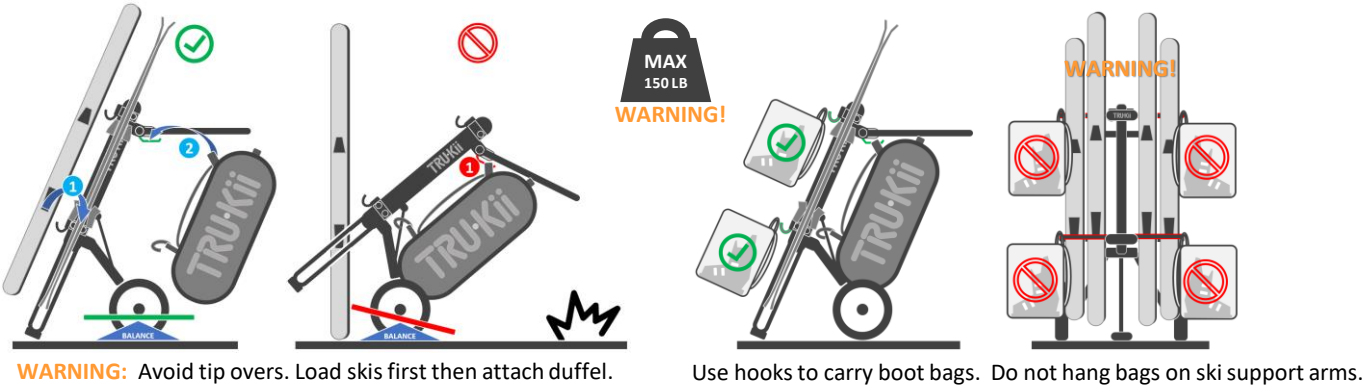


Load skis and snowboards to balance weight.

Attach cords to secure skis & snowboards

Hang poles on ski tips.

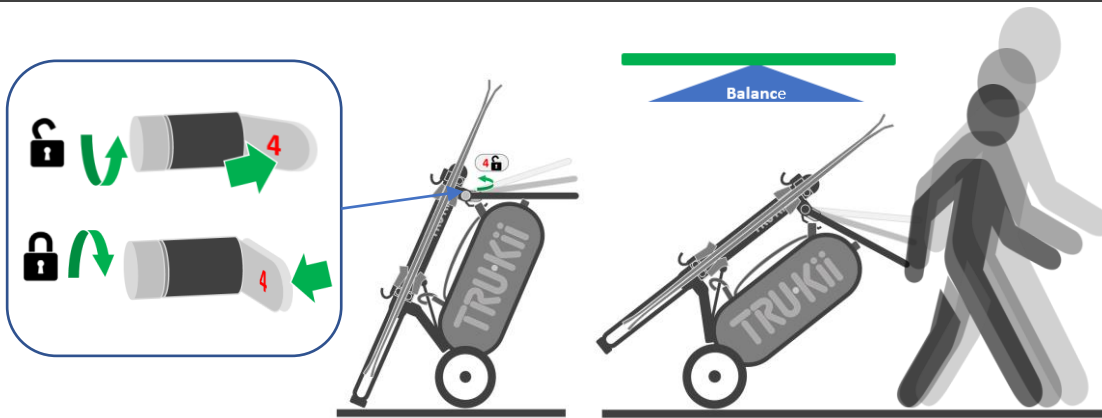
5. LOADING TRU·Kii DUFFEL AND BOOT BAGS



WARNING: Avoid tip overs. Load skis first then attach duffel.

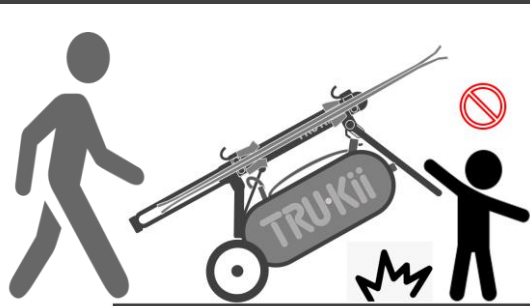
Use hooks to carry boot bags. Do not hang bags on ski support arms.

6. ADJUSTING HANDLE

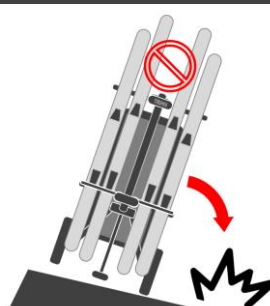


Adjust handle to balance weight at your hand height when pulling. You should feel very little weight in your hand.

7. WARNINGS



WARNING: Do not let children pull or play near cart!



WARNING: When traversing steeper terrain, use caution.

Go to trukii.com for instructional videos.

TRU·Kii LLC
50 Adams Street
STE 002
Milton Village, MA
02187
USA

Made in China.