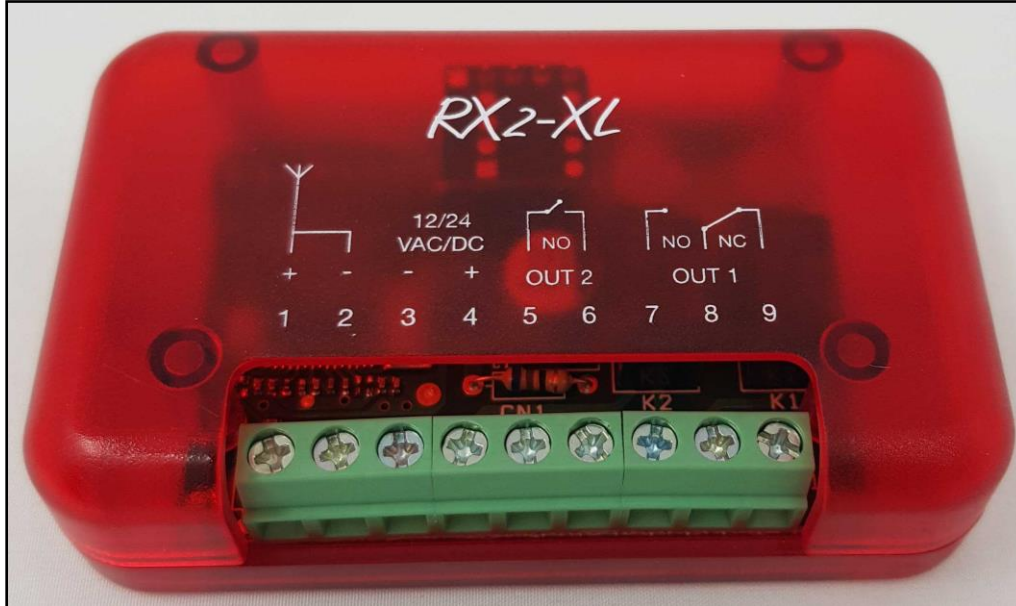


SELF-LEARNING UNIVERSAL RECEIVER

RX2-XL



1) General Safety Precautions

This installation manual is intended for qualified personnel only.

EDGESMITH LTD cannot be held responsible for any damage or injury due to improper use or any use other than the intended usage indicated in this manual.

Installation, electrical connections and adjustments must be performed by qualified personnel, in accordance with best practices and in compliance with applicable regulations.

Before installing the product, make sure it is in perfect condition.

Only use original spare parts when repairing or replacing products.

The packaging materials (plastic, polystyrene, etc.) should not be discarded in the environment or left within reach of children, as they are a potential source of danger.

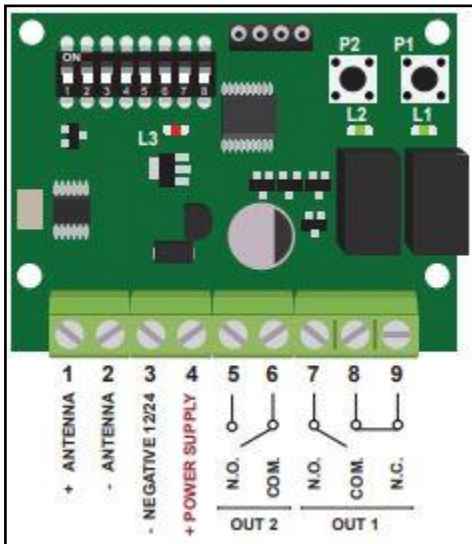
2) Technical Specifications

POWER SUPPLY	12/24V DC/AC
POWER ABSORPTION	17mA standby
OUTPUT RELAY CONTACT	Max 1A 30Vdc
WORKING TEMPERATURE	-20°/+60°C
SENSIBILITY	≥ -106 dBm
FREQUENCY	433Mhz

3) Product Description

Self-Learning Universal Receiver. This manual is used for the installation for the workings of TAST-R universal keypad and the SYNUS-2 roger dual channel remote.

4) Receiver Wiring



TERMINAL	DESCRIPTION
1 & 2	Antenna
3	Power Negative
4	Power positive
5	OUT2 N.O
6	OUT2 COM
7	OUT1 N.O
8	OUT1 COM
9	OUT1 N.C

5) Keypad DIP switches

	RECOMMENDED		DESCRIPTION
DIP 1	OFF	ON	EB rolling code function activated
DIP 2	OFF	ON	HCS rolling code function activated
DIP 3	ON	ON	Reduce the output activation 0.8 to 0.3s
DIP 4	OFF	ON	The receiver will only accept the same type of code of the first memorized remote controls, the next one should have the same type of code
DIP 5	OFF	ON	If you are using the HCS rolling code function, DIP 2 in ON, keep pressed button 1 and 2 of the remote control which has been already memorized, the codes learning is in the OUT1. If you are memorizing EB rolling code, DIP1 ON, you activate the self-memorization of the remote controls with the same installation code.
DIP 6	OFF	ON	Excluding the step-by-step function on the time outputs
DIP 7	OFF	ON	It activate the managing of the inverted code (differential Manchester encoding)
DIP 8	ON	ON	Not used

6) Memory Reset

It is necessary to perform a memory reset so that the receiver can learn a new code.

- Press and hold button P1 until the **RED** LED is off.
- Release P1 and wait until the **RED** LED is off or flashing.

7) Storing of a transmitter

- Firmly push and release the push button corresponding to the desired output (P1 for OUT1, P2 for OUT2). The corresponding **GREEN** LED lights up.
- Press the button on the remote you wish to allocate for that OUTPUT. The **GREEN** LED will flash quickly for 2 seconds to show that the code has been stored.

Recommended that the top button on the remote be allocated to P1 and bottom button to be allocated to P2

If the code is not being stored, check to make sure the remote is in fixed code – on the SYNUS-2 remotes – check to make sure the LED at the top corner of the remote is flashing **RED when the button is being pushed.**

8) Deleting of a transmitter

- Press and hold P1 and P2 Simultaneously.
- Press the button on the remote you wish to remove.
- The **GREEN** and **RED** LEDs will flash briefly to confirm the cancellation.