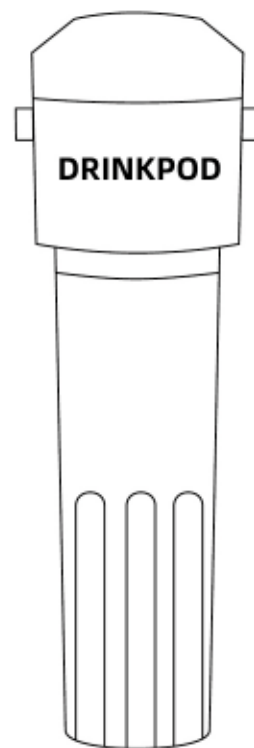




Drinkpod, LLC
2124 Avenue U, Brooklyn NY 11229
Email: support@drinkpod.com
Website: www.drinkpod.com



UnderSink Water Filtration System

System Model#: DPWF20K
Replacement Model #: RF20K

FREQUENTLY ASKED QUESTIONS

Q: Does this system remove TDS?

A: This Undersink Water Filtration System cannot reduce TDS. TDS stands for total dissolved solids. It is composed of inorganic salts and a small amount of organic matter. This filter cannot lower the TDS value because it removes harmful substances while retaining minerals such as potassium, calcium, sodium, and magnesium, which are beneficial for your health.

Q: What is the filter service life?

A: Ultra High Capacity: 20,000 gallons.

Q: Where can I buy a replacement filter?

A: For replacement water filters visit WWW.DRINKPOD.COM/RF20K

Q: Do I need to flush the filter after installation?

A: The new filter should be flushed for 5 mins to condition it. The water filter is made from coconut shell activated carbon block, less harmless charcoal residuals and fines can be found in the new filter. The flush process will remove carbon fines out of the system.

CAUTION

DO NOT INSTALL THIS PRODUCT UNTIL YOU READ AND UNDERSTAND ALL INSTRUCTIONS. FAILURE TO FOLLOW THESE INSTRUCTIONS MAY RESULT IN PERSONAL INJURY, PROPERTY DAMAGE, OR PRODUCT FAILURE.

Product Specifications

Working Pressure	30-120PSI
Min. Temperature	40°F
Max. Temperature	100°F(Not for HOT water)
Micron Rating	0.5 Micron
Flow Rate	>2.5GPM/60PSI
Service Life	20000 Gallons

*Flow rate varies based on the regional water pressure/quality.

Parts List



Tools You May Need

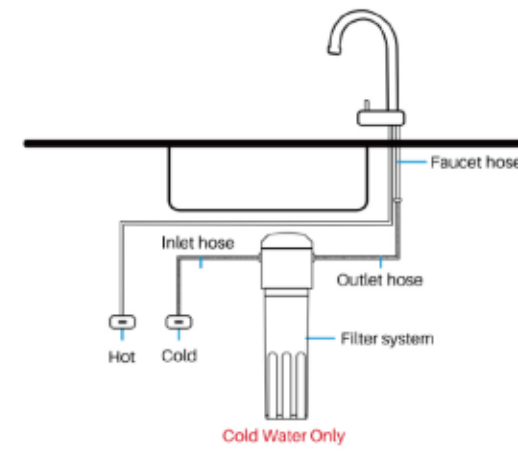


Installation Steps

1.The quick-connect connectors can be found on both sides of the filter head. Insert the inlet and outlet water hoses as instructed; push them in until you feel a "Click" action.



2.Find the desired location to mount the water filtration system.



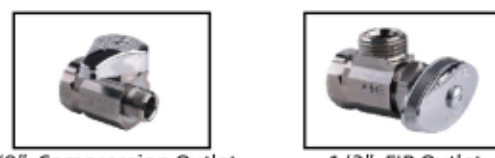
3.Place the installation template at the desired location with at least 4 inches of space between the bottom of the filter cartridge and the floor.



Installation Preparation

1.First, let's determine the under-kitchen compression water inlet size. You could find either a 1/2" or 3/8" OD compression inlet valve under the kitchen cabinet.

2.Please check the following image and pick out the suitable accessories and adapters that work best with your current under kitchen layout.



3.For 1/2" FIP outlet valve, please get the compression hose to 1/2" FIP adapter and adapter 3/8" ready.



4.For the 3/8" OD Compression outlet valve, you do NOT need to use any of the compression hose adapters.

4.Drill through the holes marked on the template; leave 1/3" length of the screws outside for attaching the filter head. Remove and discard the template after drilling.



If the water inlet valve is a 3/8" compression connection, you can connect the system directly.

1.Turn off the water inlet valve; leave the faucet ON. Place a towel under your water inlet valve to catch any dripping water.

2.Disconnect the faucet hose from the water inlet valve.



3.Connect the filtration system's inlet hose with the water inlet valve.

4.Connect the faucet hose with the filtration system's outlet hose to complete the set up.



5.Make sure the faucet is turned on and then turn the water inlet valve back on to flush the new system for 5 minutes to condition the new filter.

6.Turn off the faucet to pressurize the new connected system and check for any possible leakage.



If it is a 1/2" FIP water inlet valve, please get the 1/2" FIP to 3/8" compression adapter.

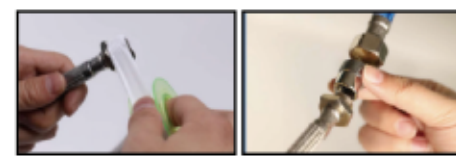
1.Turn off the water inlet valve; leave the faucet ON. Place a towel under your water inlet valve to catch any dripping water.

2.Disconnect the faucet hose from the water inlet valve, attach the 1/2" FIP to 3/8" compression adapter. Make sure the O ring is in position; apply Teflon tape at a clockwise direction 7 times only if needed.



3.Connect the filtration system's water inlet hose onto the adapter.

4.Attach the 3/8" compression to 1/2" FIP adapter onto the filter system's outlet hose, then connect the faucet's hose. Make sure the O ring is in position; apply Teflon tape at a clockwise direction 7 times only if needed.



5.Make sure the faucet is turned on and then turn the water inlet valve back on to flush the new system for 5 minutes to condition the new filter.

6.Turn off the faucet to pressurize the new connected system and check for any possible leakage.



Tips: It is completely normal for water to spurt out due to the trapped air inside the system.

Filter Replacement

- 1.Turn about 1/4 turn to the left to release the filter, then remove the old filter.
- 2.Align, insert, and twist the new filter to the right about 1/4 turn to complete the installation.
- 3.Flush about 2-3 gallons to condition the new filter.



WARNING

- To reduce the risk associated with choking, keep children away during the installation of this product.
- To reduce the risk of property damage due to water leakage, this filter MUST be installed and maintained in accordance with the product's instructions and specifications.
- Do not use with water that is microbiologically unsafe or unknown quality without adequate disinfection before or after the system.
- Testing results were performed under designated standard individual laboratory, the actual conditions, and performance may vary.
- Protect from freezing, remove filter cartridge when temperatures are expected to drop below 40°F(4°C).
- The filter should be used with cold water only. Do not install on hot water supply lines. The maximum operating water temperature of this filter system is 100°F(38°C).
- Do not install where water hammer conditions may occur. If water hammer conditions exist, you must install a water hammer arrestor. Contact a plumbing professional if you are uncertain how to check for this condition.
- Where a backflow prevention device is installed on a water system, a device for controlling pressure due to thermal expansion must be installed.

Contact Us

Email: support@drinkpod.com
Website: www.drinkpod.com

SCAN HERE FOR REPLACEMENT FILTERS.



www.drinkpod.com