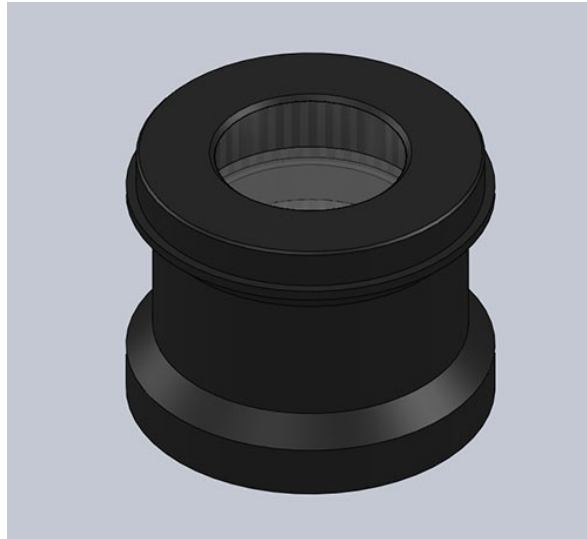


STARIZONA SCT CORRECTOR LF



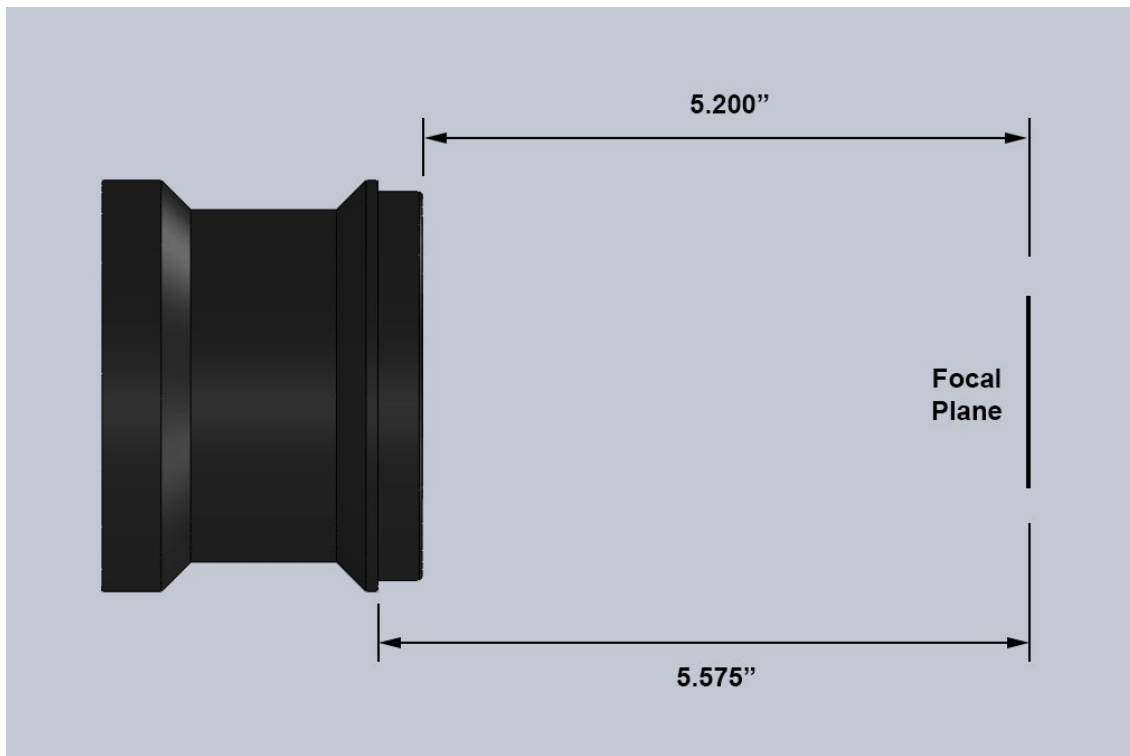
Starizona's SCT Corrector LF is a large format focal reducer and coma corrector for Celestron 11" and 14" standard Schmidt-Cassegrain telescopes (SCTs). It provides a flat field, free from coma, over a 42mm (full-frame) image circle, while increasing the photographic speed of the telescope by 2 times.

Installing the SCT Corrector LF

The SCT Corrector LF lens is designed to attach to the large 3.29" threads on the rear cell of C11 and C14 telescopes. Remove the adapter that steps the large threads down to the 2" SCT threads, and thread the SCT Corrector LF lens onto the rear cell of the telescope.

Attaching a Camera

As with all coma correctors and field flatteners, the backfocus distance from the SCT Corrector LF lens to the sensor in your camera (the focal plane) is critical. If this distance is incorrect, the edge of the field will not be sharp, but will show elongated stars. The diagram below shows the correct distance from the end of the male threads, or from the base of the threads.



The threads are the same as those on the rear cell of the telescope, so standard accessories can be attached, but adapters may be required to set the proper distance. Contact Starizona for help in choosing adapters, or having the necessary parts made.

If using a Crayford focuser, such as a Feathertouch focuser, it may be possible to set the correct distance by racking the drawtube in or out. Once the correct distance is set, you will need to roughly focus by using the primary mirror focus knob. This will set the primary mirror at the correct position. Fine-tuning of the focus can then be done with the Crayford focuser. If using an autofocuser such as the MicroTouch, be sure there is sufficient travel left in the focuser to train the focuser (using the First Light Wizard in FocusMax, for example). This will depend on the telescope, camera pixel size, and software settings, but is typically around 0.125\".

STARIZONA
5757 N. Oracle Rd.
Tucson, AZ 85704
520-292-5010
www.starizona.com