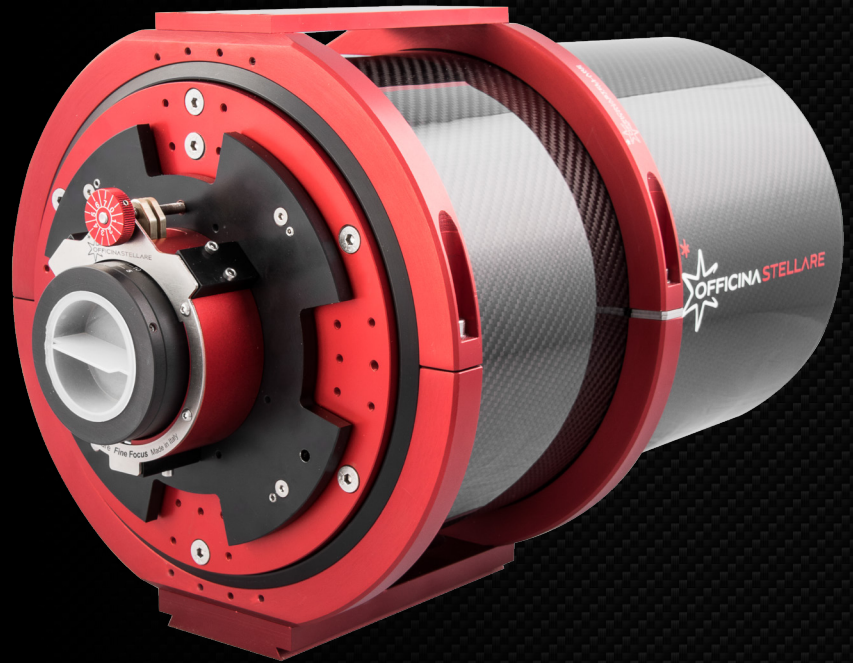


What's new in the RH200-AT and RH200MKII-AT



NEW FEATURES FOR BOTH MODELS

- new athermal mechanic, ready to work at any temperature condition
- new nano coating, better transmission and resistance to moisture. Easy clean.
- more accessories provided: rings, losmandy dovetail, upper dovetail
- new mechanical zero tip tilt installed (RH200-AT)
- new tip tilt system for heavy payloads (RH200 MKII-AT)
- new stronger lens cell's mechanic
- new baffle design to avoid any straylight



From the old model, the new RH200 maintains only the same superb optical quality and the price.

Now, with the same price, we give more quality, more design, more optical and mechanical features, more accessories.

TIP TILT DIFFERENCIES BETWEEN RH200-AT AND RH200 MARK II-AT

The RH200 MKII-AT offers a new tip tilt system, designed for heavy payloads. It can be regulated with 2 bronze cursors. This tip tilt system is highly recommended only for experienced users. For all the rest, the RH200-AT has a new mechanical zero for the classic 4 points tip tilt system. This means, if a user needs to return at a start point after a bad regulation, now is possible as easy as turning a screw. The classic tip tilt system is the best one for most setups.

Classic RH200-AT tip tilt system

- 4 regulation screws
- 4 locking grains
- mechanical zero point on each regulation screw



RH200 Mark II tip tilt system

- 2 bronze regulation cursors
- thumb screw for general stiffness
- locking pivot system



RH200-AT series new accessories



TIP TILT MOTORS FOR MARK II-AT

RH200 Mark II-AT can be equipped with motors on its new tip tilt system. They are provided with a controller and software for remote control. This picture shows an RH200 (previous version) with tip tilt motors and motorkit installed.



0.8x REDUCER

RH200 is one of the fastest astrographs ever. And it can become faster with the new 0.8x reducer, from f/3 to f/2.4. To be installed, needs a low profile focuser (e.g., FLI ATLAS or Optec LEO) and special adapters provided from us, designed on customer's equipment. This reducer works with any RH200 version and, as well, with any RH telescope.



DELUXE SOFT TRANSPORT BAG

Officina Stellare designed a new deluxe transport bag for the RH200-AT, older RH200 and any other telescope with a comparable size. It's hard padded, given with a separator and straps to secure the telescope safely to the bag. And, as well, it has the unique Officina Stellare design.



FF72 AND MOTORKIT

Our RH200 is provided, by default, with our FF72 Fine Focuser. It's a very good focuser, capable of very fine focus regulation and holding medium size payloads. It can be equipped with our Motorkit with hardware/software interface to pilot it through ASCOM drivers (provided).

