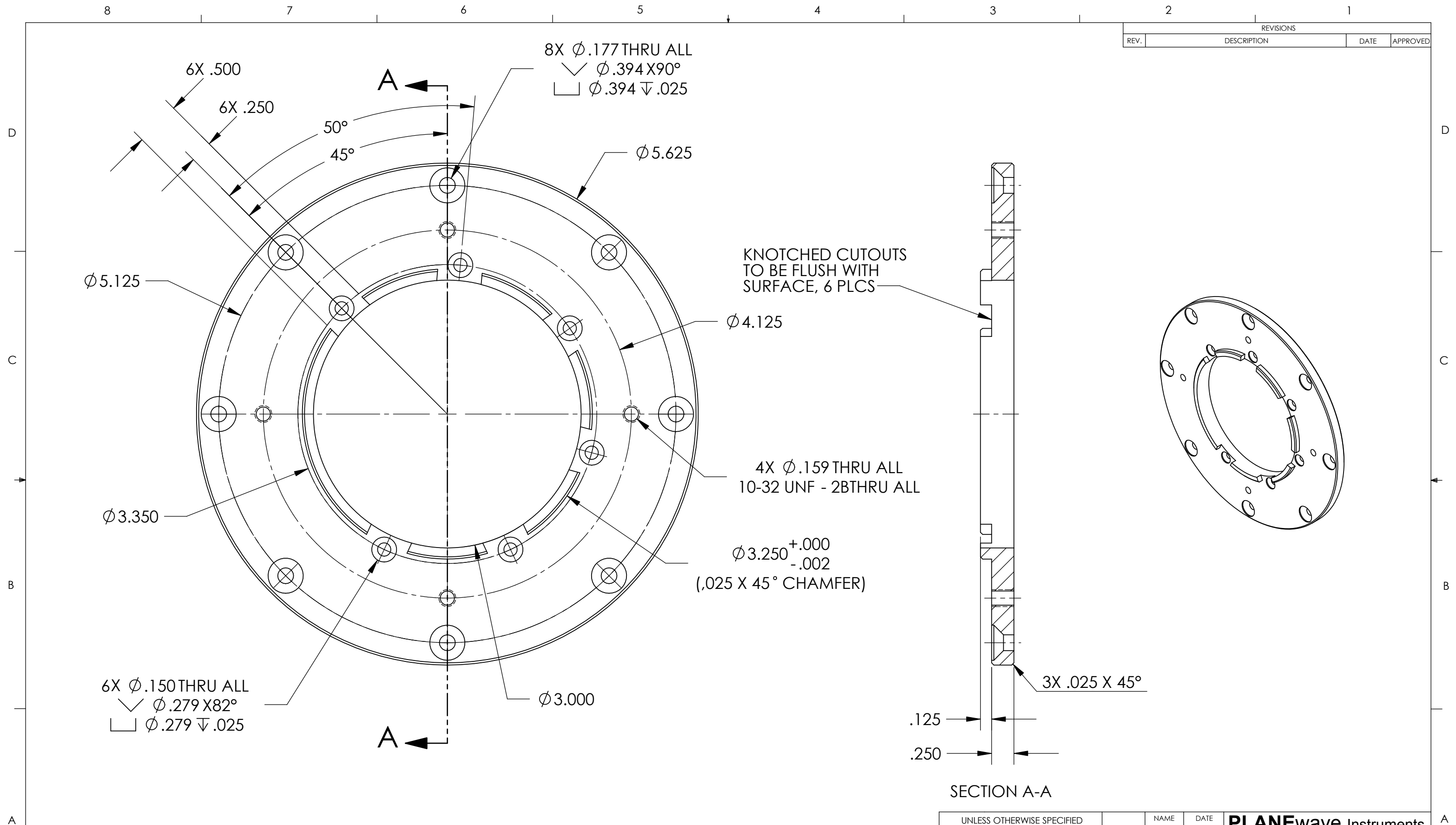


REVISIONS			
REV.	DESCRIPTION	DATE	APPROVED



**NOTES:**

1. REMOVE ALL SHARP EDGES.
2. FINISH: BLACK ANODIZE PER MIL-A-8625, TYPE II, CLASS 2

**PROPRIETARY AND CONFIDENTIAL**  
 THE INFORMATION CONTAINED IN THIS DRAWING IS THE SOLE PROPERTY OF PLANEWAVE INSTRUMENTS. ANY REPRODUCTION IN PART OR AS A WHOLE WITHOUT THE WRITTEN PERMISSION OF PLANEWAVE INSTRUMENTS IS PROHIBITED.

UNLESS OTHERWISE SPECIFIED TOLERANCES  
 DECIMAL DIM .XXXX±.0005  
 .XXX±.005  
 .XX±.02  
 ANGULAR DIM MACHINED ±0° 30'  
 LOCATING ±0° 30'  
 FORMED ±1°  
 CHAMFERS ±5°  
 SURFACE FINISH 63  
 MAX R 0.015  
 BREAK ALL SHARP EDGES & REMOVE BURRS.

DRAWN	NAME	DATE
CHECKED	BP	7/14/08
ENG APPR.		
MATERIAL		
6061-T6 AL ALLOY		
FINISH		
SEE NOTE		

<b>PLANewave Instruments</b>		
TITLE		
ADAPTER,ALTA CCD AND FWA		
SIZE	DWG. NO.	REV.
B	200396	A
SCALE:1:1	CAD FILE: 200396A	SHEET 1 OF 1