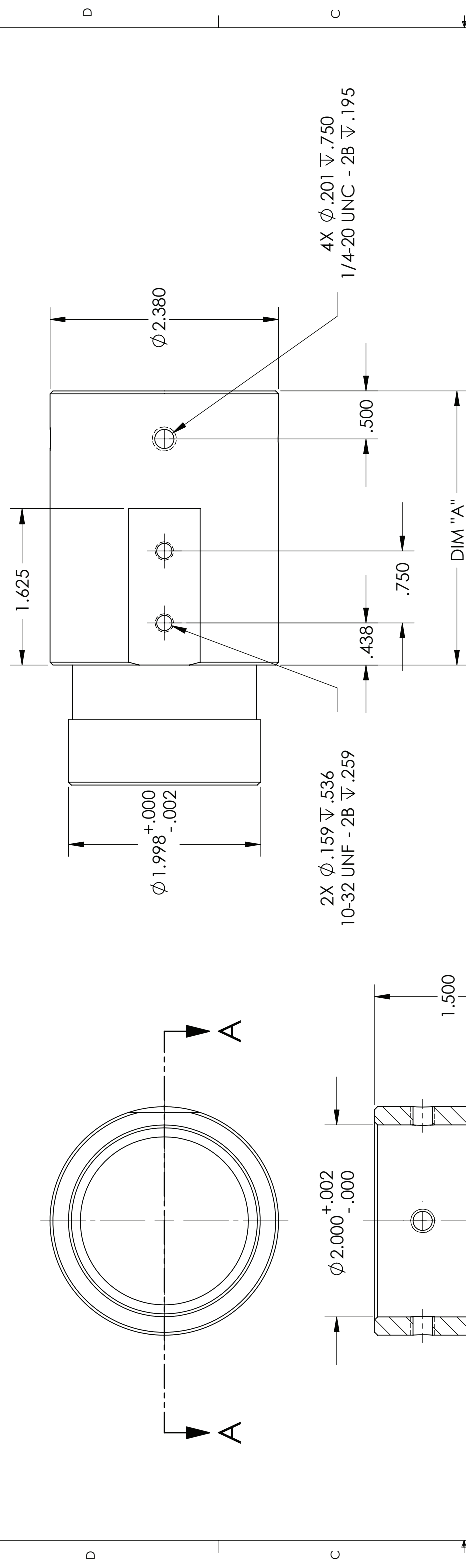
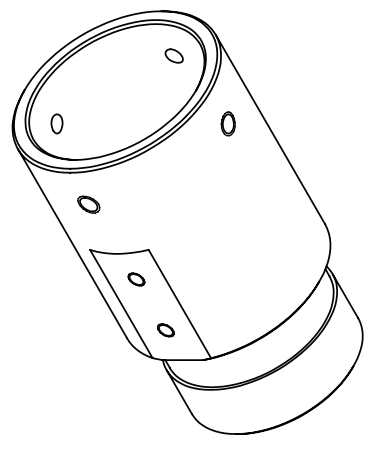


REV.	DESCRIPTION	DATE	APPROVED



PART NUMBER	DIM "A"
200368-1	3.850
200368-2	2.850
200368-3	3.300



NOTES:

1. REMOVE ALL SHARP EDGES.
2. BLACK ANODIZE PER MIL-A-8625F, TYPE II, CLASS 2

PROPRIETARY AND CONFIDENTIAL
 THE INFORMATION CONTAINED IN THIS DRAWING IS THE SOLE PROPERTY OF PLANEWAVE INSTRUMENTS. ANY REPRODUCTION IN PART OR AS A WHOLE WITHOUT THE WRITTEN PERMISSION OF PLANEWAVE INSTRUMENTS IS PROHIBITED.

UNLESS OTHERWISE SPECIFIED TOLERANCES		NAME	DATE
DECIMAL DIM	XXXX \pm .0005	W. ZHOU	1/5/2007
ANGULAR DIM	MACHINED $\pm 0^{\circ} 30'$	CHECKED	
LOCATING	$\pm 0^{\circ} 30'$	ENG. APPR.	
FORMED	$\pm 1^{\circ}$	MATERIAL	6061-T6 AL ALLOY
CHAMFERS	$\pm .5^{\circ}$	FINISH	SEE NOTE

PLANEWAVE Instruments	
TITLE	
SPACER, CCD ST10	
SIZE DWG. NO.	REV.
B	200368
SCALE:1:1	CAD FILE:200368B
	SHEET 1 OF 1

SECTION A-A