

Mounting rail socket

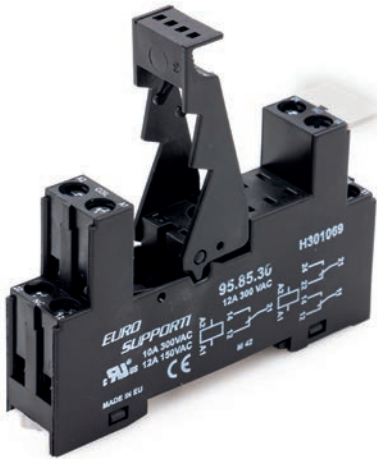
SRD SGR2

for SGR282 ZK

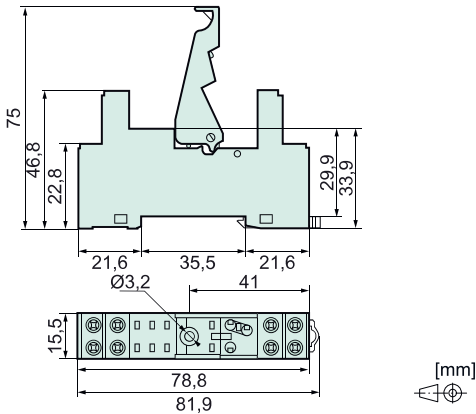


Features

- Plug-in socket with screw terminals
- For relay series SGR282 ZK (VAR1, VAR2)
- With plastic retaining bracket
- Identification plate (1 piece)
- Mounting
 - on mounting rail 35 mm (IEC 60715)
 - central mounting with M3 screw



Dimensions

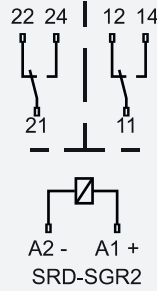


Technical data

Limit continuous current*	8 A
Rated voltage	300 VAC
Connections:	
- Cross sections for wire	2 x 2,5 mm ²
- Cross sections for stranded wire	2 x 1,5 mm ²
- Torque	max. 0,8 Nm

*max. note max. contact load in the relay data sheet

Circuit diagram (top view)



Insulation data

Rated insulation voltage (IEC 60664-1)	250 VAC
Basic insulation	— — — — —
- Air and creepage distance (min.)	4 mm
- Test voltage	2500 V _{rms} / 1 min
Creepage resistance	CTI 250
Pollution degree	2
Overvoltage category	III

Mechanical data

Weight	approx. 40 g
--------	--------------

Other data

Ambient temperature	-25 °C ... +70 °C
Approvals	UL, cUL
UL File	E140923

Mounting instructions

Mounting	on 35 mm mounting rail (IEC 60715)
Mounting	with central fastening Screw M3
- Torque	max. 1,28 Nm

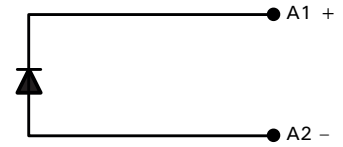
Product key

SRD	SGR2	Socket type	Mounting rail socket
SGR2	Relay series	SGR282 ZK	

Options, Accessories

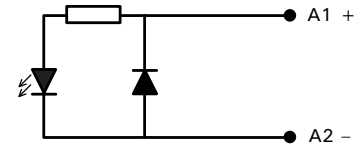
SRD SGR2 M01

- Integrated freewheeling diode
- Suitable for 6 VDC to 230 VDC (+ at terminal A1)



SRD SGR2 M03

- Integrated freewheeling diode
- green LED
- Suitable for 6 VDC to 24 VDC(+ at terminal A1)



SRD SGR2 M05

- green LED
- Integrated reverse polarity protection
- Suitable for 6 VDC to 24 VDC (+ at terminal A1)

