



Haller

Lock C



Instruction manual – User

1 User mode summary

As a user, you can operate the lock C with a key card or your smartphone. The USM Haller lock C has up to three user modes.

Public Locker mode

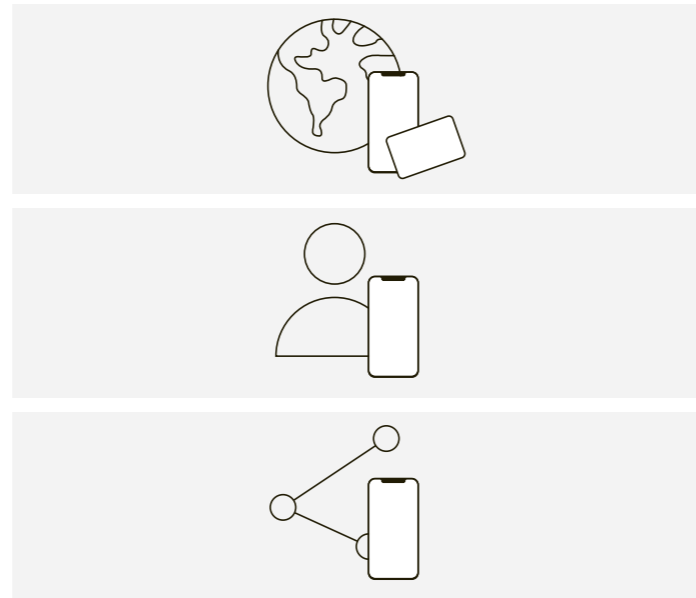
- Free choice of locker
- Temporary use

Personal Locker mode

- Assigned lockers
- Safe and long-term storage of documents, equipment or personal belongings.

Shared Locker mode

- Shared lockers
- Temporary or long-term access





2 User area of the USM app

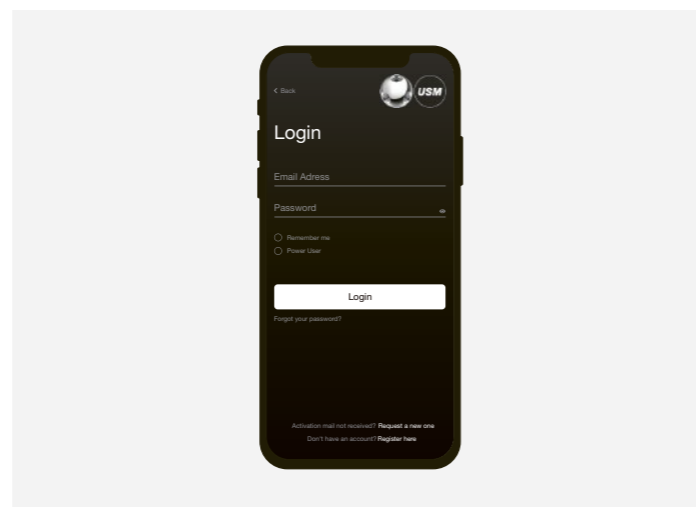
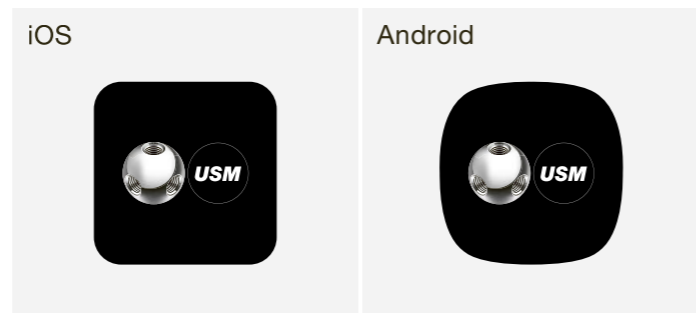
If you use a key card, you can skip to the next point. The USM app is required for both “Personal Locker mode” and “Shared Locker mode”.

Registering as a user

1. Download the USM app.
2. Select the desired language.
3. Register.
4. Once you have registered, log in to the app.

 Before logging in, untick the “Power User” tick box. Leave this tick box unticked at all times!

 You are now a user with access to the user area.



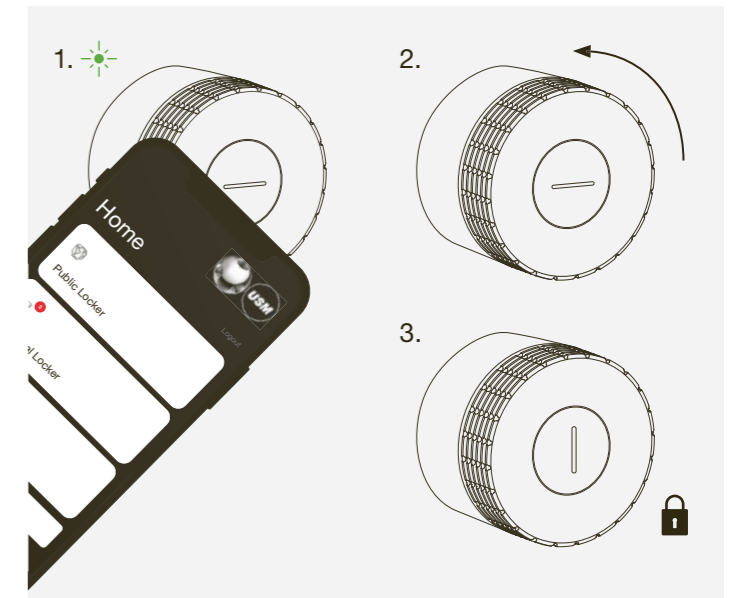
3 Operating lock C

Locking lock C*


1. Hold your key card or your smartphone (with the app open) in the middle of the lock C that you wish to lock.
Flashing signal: 1 × green
2. Turn the lock handle 90° counterclockwise so that the slot is in vertical position and the bolt inside moves upwards.
3. The lock is now locked.


* If the “Auto Close” function is activated, end users only need to hold their smartphone on the lock to open the locker. To close it, end users simply turn the lock handle 90° counterclockwise without needing to use the smartphone again. The lock locks automatically after 4 seconds.


This function is enabled by the Power User and is available in both “Personal Locker mode” and “Shared Locker mode”.

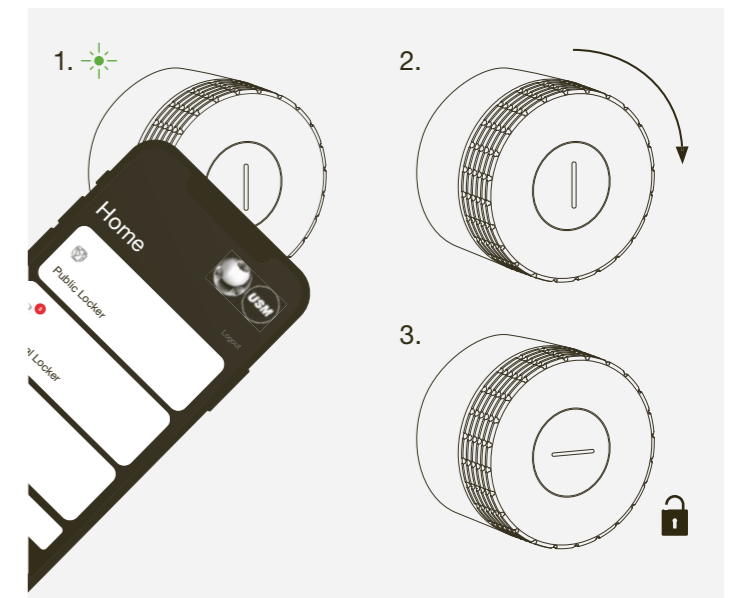


Opening lock C

1. Hold your key card or your smartphone (with the app open) in the middle of the lock C that you wish to open.
Flashing signal: 1 × green
(if the “Auto Close” function is activated)
Flashing signal: 2 × green  (1 × green, after 4 sec. 1 × green)
2. Turn the lock handle 90° clockwise so that the slot is in horizontal position and the bolt is retracted.
3. The lock is now open.

 The lock can only be opened with the same key card or smartphone that it was locked with (except in “Shared Locker mode”).

 All locks can be opened by the Power User in an emergency.



4 Naming lock C

You have the option of naming your lock or changing the names of your locks.

This can help you to find your way around and locate your locks; it is also helpful when managing several locks. You can choose the names as you wish.

Examples:

- Describe the location:
row 2 locker 3, top-left locker, lock 5 in green unit
- Describe the type of use:
private, office, XY group project, team locker

Naming lock C

1. Go to the home screen in the relevant mode, i.e. “Public Locker”, “Personal Locker” or “Shared Locker” mode.
2. Select the desired lock C by tapping on the relevant tile.
3. Press “Rename” and change the name.
4. Then tap on “Save” to save the new name.



Switzerland

USM U. Schärer Söhne AG
Thunstrasse 55, 3110 Münsingen
Phone +41 31 720 72 72, info.ch@usm.com

Germany

USM U. Schärer Söhne GmbH
Siemensstraße 4a, 77815 Bühl
Phone +49 7223 80 94 0, info.de@usm.com

France

USM U. Schärer Fils SA, Showroom
23, rue de Bourgogne, 75007 Paris
Phone +33 1 53 59 30 37, info.fr@usm.com

United Kingdom

USM U. Schaerer Sons Ltd., London Showroom
Ground Floor, 49–51 Central St., London, EC1V 8AB
Phone +44 207 183 3470, info.uk@usm.com

USA

USM U. Schaerer Sons Inc., New York Showroom
28–30 Greene Street, New York, NY 10013
Phone +1 212 371 1230, info.us@usm.com

Japan

USM U. Schaerer Sons K.K., Tokyo Showroom
Marunouchi MY PLAZA 1 · 2F
2-1-1 Marunouchi, Chiyoda-ku, Tokyo 100-0005
Phone +81 3 5220 2221, info.jp@usm.com

All other countries

contact USM Switzerland.