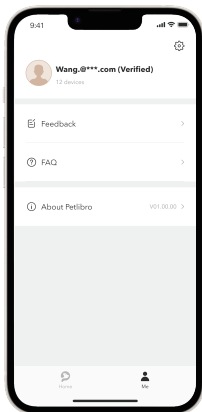


## Feedback & FAQ

Go to Me > Feedback in the app to chat with a customer service staff online or send an inquiry email. You can also check the FAQ in the app.



Model: PLAF103

## QUICK START GUIDE

Granary Automatic Pet Feeder  
WiFi Control 3L/5L



## KEY SECTIONS IN THE USER MANUAL

Section	Reference page in the manual
Installation	Page 06
Power on	Page 08
Recommended feeding portions	Page 15
Disassemble for cleaning	Page 16

## APP CONTROL

### Network, router & system requirements

- The feeder supports 2.4GHz and 5GHz Wi-Fi.
- Keep the feeder close to your router for a better Wi-Fi connection. The ideal range is within 6m (19.7ft) without obstacles and walls.
- Supports iPhones running iOS 12.0 or later and Android smartphones running Android 5.0 or later.

### Install the app & log in

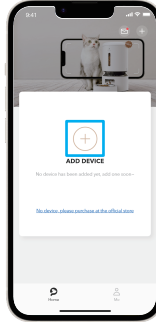
1. Scan the QR code below or search "PETLIBRO" in the App Store  or Google Play  to download the App.
2. Sign up and log into your account.



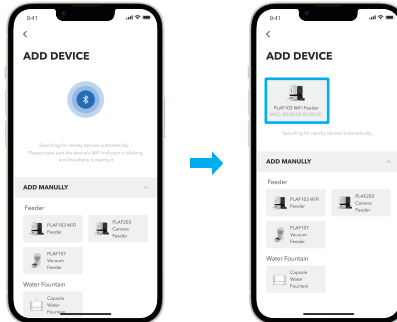
### Automatically add the device

Turn on the Bluetooth and Location services on your phone before adding a device.

1. Open the app and tap the "+" symbol.



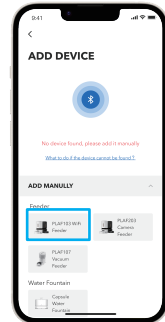
2. The app will automatically search nearby devices. Tap the device you want to add and follow the on-screen instructions.



### Manually add the device

If the app can't find any devices, you can manually add the device.

1. Tap the device you want to add in the "ADD MANUALLY" list and follow the on-screen instructions.



2. Tap the device for controls.

**Note:** All successfully added devices will appear in the Home page.

