

SNAPKIS

Transformers 0-4

USER MANUAL

Group 0+,I
Suitable from 0kg to 18kg
(approx. Birth to 4 yrs)



SNAPKIS

601 Sims Drive, Pan-I Complex
Singapore 387382

www.snapkis.com

Approved to ECE R44-04 standard
(Please read this instruction manual carefully before installation)



Contents

- 1. Application of Car Seat 1
- 2. Understanding Your Vehicle 2
- 3. Safety information..... 3
- 4. Car seat parts 5
- 5. How to ensure the shoulder belts are at the correct height 6
- 6. How to adjust the shoulder belts 6
- 7. How to fasten the harness buckle 7
- 8. How to adjust and secure the harness 7
- 9. How to adjust the reclining position of the car seat 8
- 10. How to use the red lock-off 9
- 11. How to install car seat rear-facing for Group 0+ (0-13kg) 9
- 12. How to install car seat forward facing for Group I (9-18kg) 11
- 13. How to remove the car seat cover..... 13
- 14. Cleaning & Maintenance 15

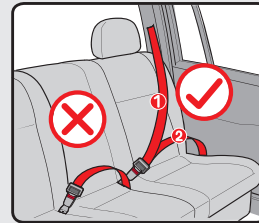
1. Application of Car Seat

For your child's safety, please follow below instructions:

Rear-facing installation (Group 0+)	Forward facing installation (Group I)
Child with a body weight between 0-13kg (approx. Birth to 1 year)	Child with a body weight between 9-18kg (approx. 9 months to 4 years)

2. Understanding Your Vehicle

1. This is a "Universal" child restraint. It is approved to ECE R44-04, for general use in vehicles and it will fit most, but not all vehicles.
2. A correct fit is likely if the vehicle is capable of accepting a "Universal child restraint for this age group.
3. If in doubt, please contact manufacturer or retailer.



⚠ WARNING

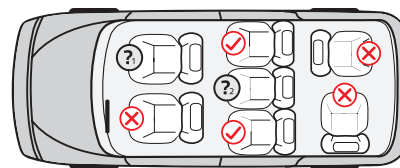
This car seat can only be installed using a 3-point seat belt.

- ❶ Vehicle seat belt – shoulder belt
- ❷ Vehicle seat belt – lap belt

This car seat is suitable for all vehicles equipped with a 3-point seat belt, approved to ECE R16 regulation.

This car seat only can be installed on a forward facing passenger seat. Do not install the child car seat at the lateral and rear facing passenger seat.

- ✔ Suitable to install car seat at this position
- ✘ Do not install car seat at this position



- ❓ Do not install the car seat at the front passenger seat with an active airbag
- ❓ The car seat can be used if this passenger seat has a 3-point seat belt

Note: Above illustration is based on a left hand drive car

3. Safety Information

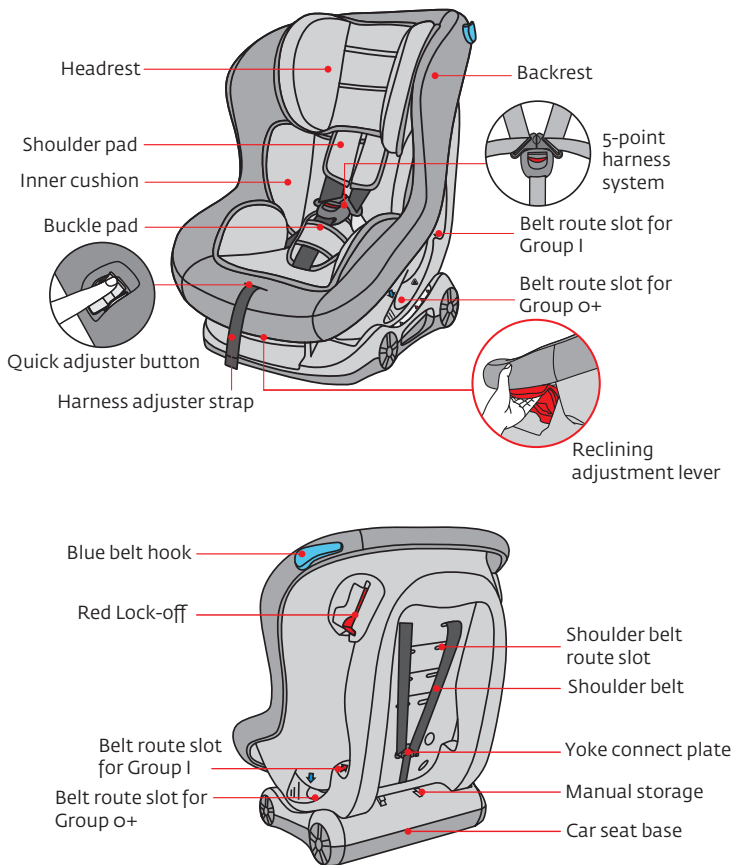
⚠ WARNING

For your child's safety, please read this user manual carefully.

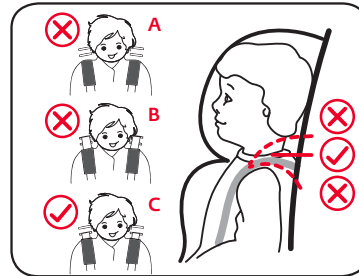
- 1) This car seat should only be installed by an adult and is suitable for children from 0 to 18 kg.
- 2) This car seat can be installed both forward and rear-facing using a vehicle 3-point seat belt. Do not install this car seat in a forward facing position if your child weighs less than 9kg.
- 3) Never place the car seat on a vehicle seat with an active airbag.
- 4) Please follow the installation diagrams on the car seat or user manual when installing the car seat in your vehicle.
- 5) The car seat should be properly secured so that your child is well protected in the event of an accident.
- 6) Always keep the car seat secured in the vehicle even when it is unoccupied.
- 7) For your child's safety, do not use a damaged or second-hand car seat. This car seat should be changed timely when it has been subject to violent stress in an accident.
- 8) Never use the car seat without the cover.
- 9) Do not put your child at risk by using other replacement cover which could prevent the car seat from protecting your child as it should.
- 10) Please cover the car seat properly when the vehicle is parked under direct sunlight. The parts of the car seat that are not provided with a textile cover should be kept away from the sunlight, otherwise it may be too hot for your child's skin.
- 11) The harness buckle cannot be in semi-locked state. Always ensure the car seat is secured before using. In case of emergency, your child can be taken out quickly.
- 12) Keep the car seat away from corrosive fluids.

- 13) Please keep the child car seat in a safe place when not in use. Do not place heavy objects on the car seat.
- 14) Please follow the installation instructions closely. Do not allow the car seat to be jammed in the vehicle door, seat runners, etc.
- 15) Do not make any additions or changes to the car seat. Do not use other installation methods except for the instructions provided in the user manual.
- 16) Do not use any load bearing contact points other than those described in the instructions and marked on the car seat.
- 17) Any luggage or other objects liable to cause injuries in the event of collision should be properly secured.
- 18) Do not install car seat on an unlocked foldable vehicle seat as it may lead to the car seat losing its effectiveness in an emergency brake situation.
- 19) Do not put any padding under the car seat to increase height because it may cause the car seat to lose its effectiveness in the event of an accident.
- 20) Do not leave your child on the car seat unattended.
- 21) Please stop your vehicle in a safe area when your child accidentally unfasten the seat belt. Secure the seat belt properly before continuing the journey.
- 22) Any straps holding the car seat to the vehicle should be tight. Any straps restraining the child should be adjusted according to the child's body and not be twisted.
- 23) The lap section of the harness should be worn as low as possible, over your child's hips.
- 24) The user manual should be retained for the life span of the car seat.

4. Car Seat Parts



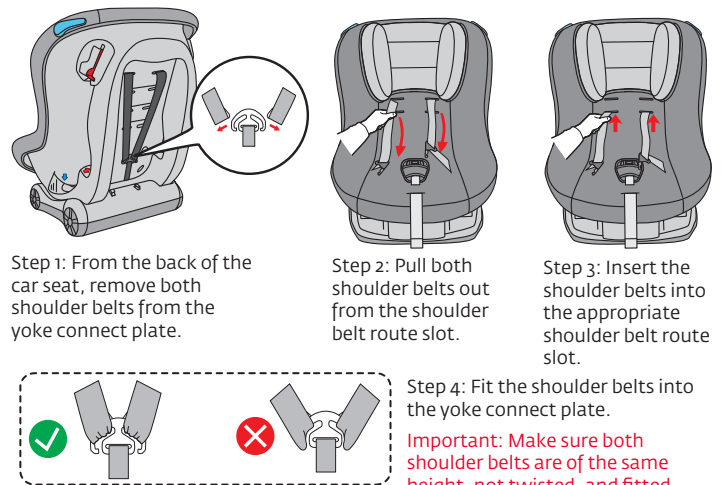
5. How to ensure the shoulder belts are at the correct height



For your child's safety, always check that the height of the shoulder belts are adjusted according to the size/height of your child. The shoulder belt should be at the same level as your child's shoulder or slightly higher (as shown in the diagram).

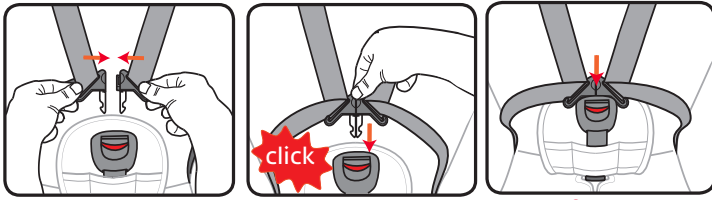
6. How to adjust the shoulder belts

If the height of the shoulder belt is not suitable for your child, adjust it according to the following steps:



Step 4: Fit the shoulder belts into the yoke connect plate.
Important: Make sure both shoulder belts are of the same height, not twisted, and fitted properly into the yoke connect plate.

7. How to fasten the harness buckle



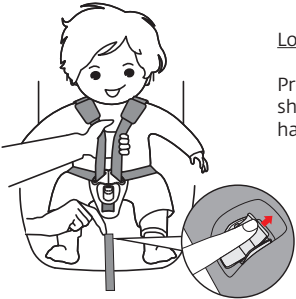
Follow the method shown in the diagrams above:

Step 1: Put the right and left tongues of the buckle together. Ensure the buckle tongues are firmly together.

Step 2: Insert the joined buckles tongues into the harness buckle until you hear a "click" sound. Make sure the harness buckle is secure by pulling the shoulder belt upwards.

Step 3: To release the harness, press the red button on the harness buckle. The red button passed the safety test and meets the safety standard. It is difficult for a child to unfasten the harness buckle on his own.

8. How to adjust and secure the harness



Loosening the harness

Press the quick adjuster button and pull the shoulder belts towards yourself to loosen the harness.

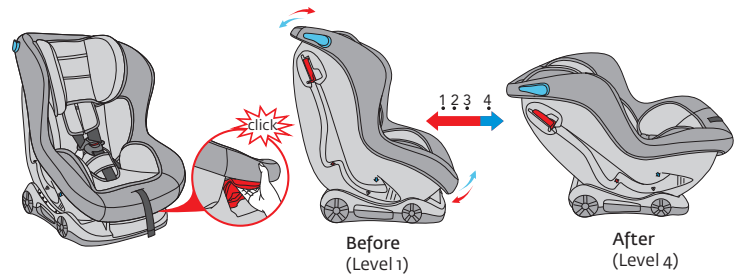
Tightening the harness

Place your child in the car seat. Insert the joined buckles tongues into the harness buckle. Adjust the position of the lap and shoulder belts. Pull the harness adjuster strap until the harness is tight.

⚠ Important: Tighten the harness as far as possible, while ensuring your child is comfortable.



9. How to adjust the reclining position of the car seat



This car seat can be adjusted to four reclining positions. For Group 0+, adjust the car seat to level 4. For Group I, adjust the car seat to level 1, 2 or 3.

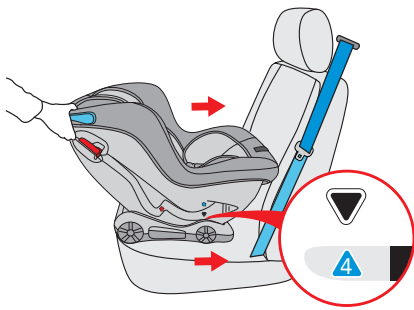
Pull the reclining adjustment lever and adjust the car seat to the most suitable position. Release the reclining adjustment lever and you should hear a "click" sound.

10. How to use the red lock-off



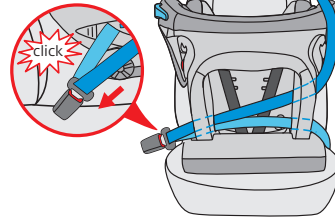
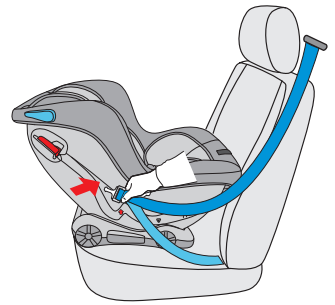
Open the red lock-off which is located at the side of the car seat, then insert the vehicle shoulder belt into the red lock-off.

11. How to install car seat rear-facing for Group 0+ (0-13kg, approx. birth to 1 year)

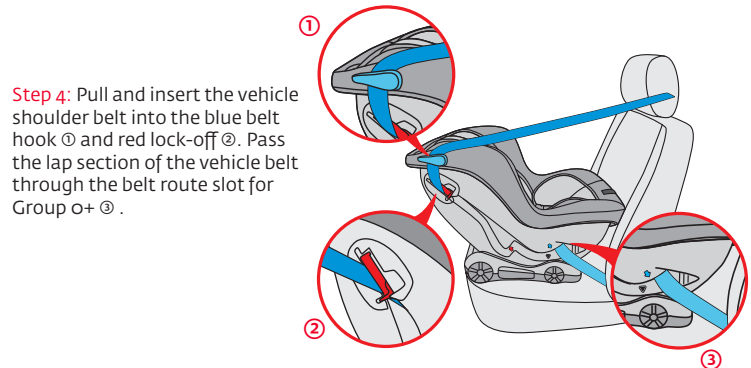


Step 1: Adjust the reclining position of the car seat to level 4. Place the car seat facing the vehicle seat backrest. Make sure the front of the car seat is resting firmly against the vehicle seat backrest.

Step 2: Pull out the vehicle seat belt and pass it through the seat belt route slot at the back of the car seat.

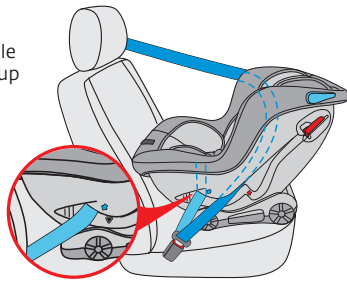
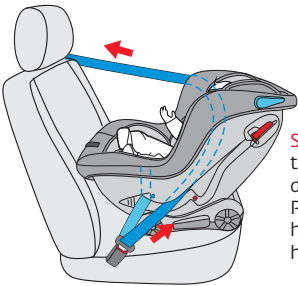


Step 3: Pass the vehicle seat belt through the other seat belt route slot and fasten it into the buckle until you hear a "click" sound.



Step 4: Pull and insert the vehicle shoulder belt into the blue belt hook ① and red lock-off ②. Pass the lap section of the vehicle belt through the belt route slot for Group 0+ ③.

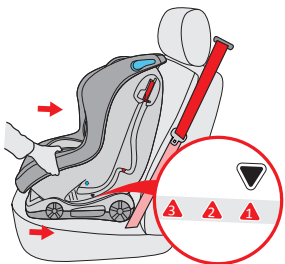
Step 5: Pass the lap section of the vehicle belt through the belt route slot for Group 0+ located on the other side of the car seat.



Step 6: Pull the vehicle seat belt by following the direction of the red arrows (as shown in the diagram) and make sure the seat belt is tight. Place your child into the car seat and secure him with the 5-point harness. Ensure the harness is not twisted.

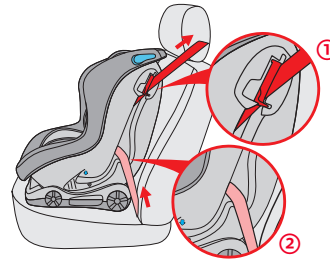
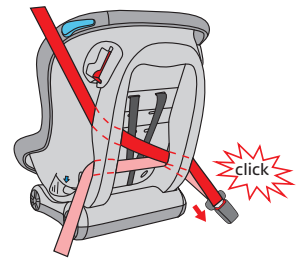
⚠ Important: Do not use any load bearing contact points other than those described in the instructions and marked on the child restraint.

12. How to install car seat forward facing for Group I (9-18kg, approx. 9mths to 4 years)



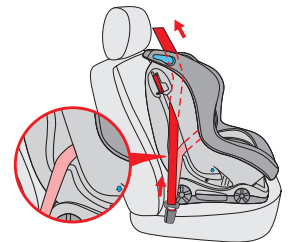
Step 1: Adjust the car seat to the suitable position (level 1, 2 or 3). Place the car seat forward facing on the vehicle seat. Make sure it is resting firmly against the vehicle seat backrest.

Step 2: Pass the vehicle seat belt through both seat belt route slots of the backrest and fasten it into the buckle until you hear a "click" sound.



Step 3: Insert the vehicle shoulder belt into the red lock-off ①. Pass the vehicle lap belt through the belt route slot for Group I ②.

Step 4: Pass the lap section of the vehicle belt through the belt route slot for Group I on the other side of the car seat. Tighten the vehicle seat belt according to the direction of the red arrows. Make sure the seat belt is tight and remove any slack.



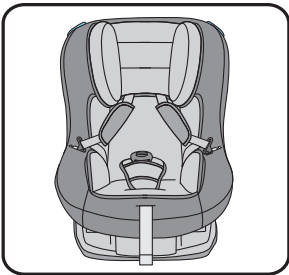
Step 5: Place your child into the car seat and secure him with the 5-point harness. Ensure the harness is not twisted.

Note: Reclining position (level 1, 2, 3) is only suitable for forward-facing installation. It can be adjusted before or after installation.

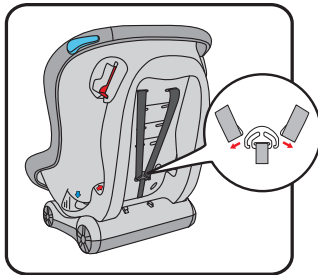


▲ Important: Do not use any load bearing contact points other than those described in the instructions and marked on the child restraint.

13. How to remove the car seat cover



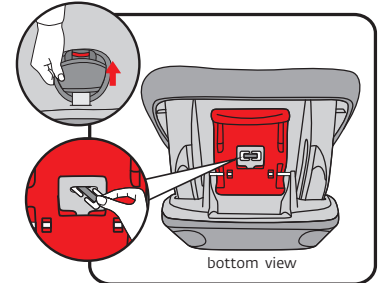
Step 1: Press the red button on the harness buckle to release the 5-point harness system.



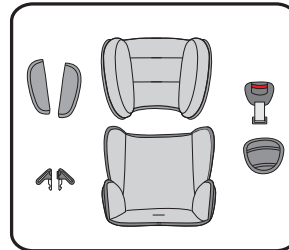
Step 2: Turn the car seat to the back, remove both shoulder belts from the yoke connect plate.



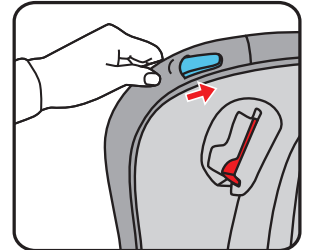
Step 3: From the front of the car seat, pull both shoulder belts out from the shoulder belt route slots.



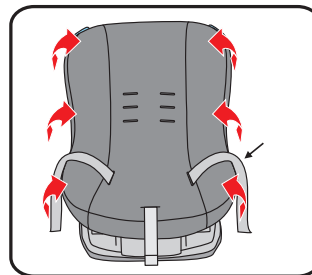
Step 4: Adjust the reclining position of the car seat to level 4. Remove the buckle metal plate from the crotch belt hole.



Step 5: The 5-point harness system, inner cushion and other equipment can be removed from the front of the car seat easily. Please keep the equipment properly for future use.



Step 6: Take off the car seat cover from the blue belt hook.



Step 7: Remove the car seat cover.

Notice: Do not remove the harness straps from the car seat unless necessary.

To re-fit the car seat cover, please follow the above method in the reverse order.

14. Cleaning & Maintenance

Periodically check the car seat for damage or worn parts. Do not use this car seat if any part is damaged or worn.

5-point harness buckle

A 5-point harness buckle is a safety feature. Please use water to clean the 5-point harness buckle as food, drink and other residues may easily accumulate in the buckle. If the buckle is jammed, please contact manufacturer or retailer.

5-point harness belts and plastic components

Wipe the 5-point harness belts and plastic components with warm water and mild soap.

Car seat cover

Never use this car seat without the cover.

The car seat cover is washable. We do not recommend removing the car seat cover frequently. Please refit the car seat cover after washing and make sure all components are refitted properly.

Machine/Hand wash the car seat cover in water below 30 °C with mild soap. Do not use any solvent, cleaning chemicals and lubricant on the car seat.

Do not remove or make any additions to the car seat cover and 5-point harness system.

Flat dry. Avoid drying the seat cover in direct sunlight.

Do not dry clean.



Machine/
Hand wash,
below 30 °C



Do not bleach



Do not
tumble



Do not wring



Do not iron