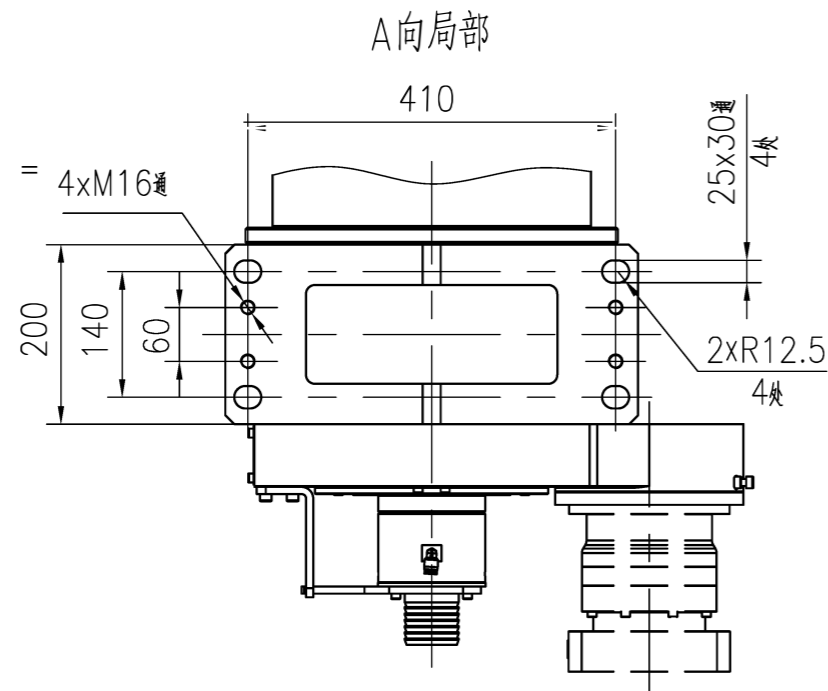
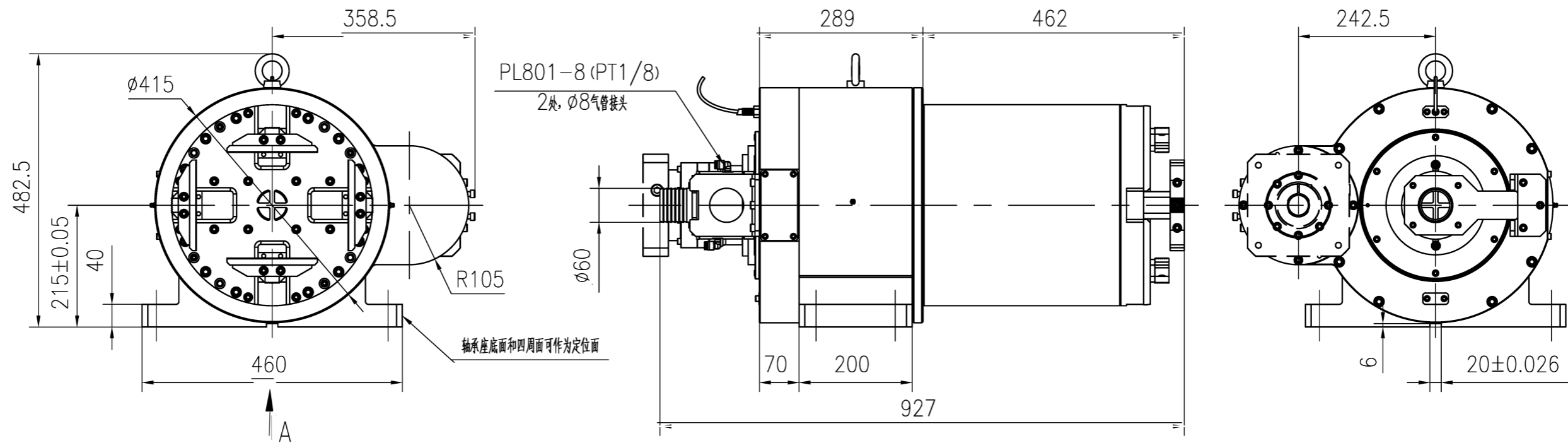


RY350-13-0050



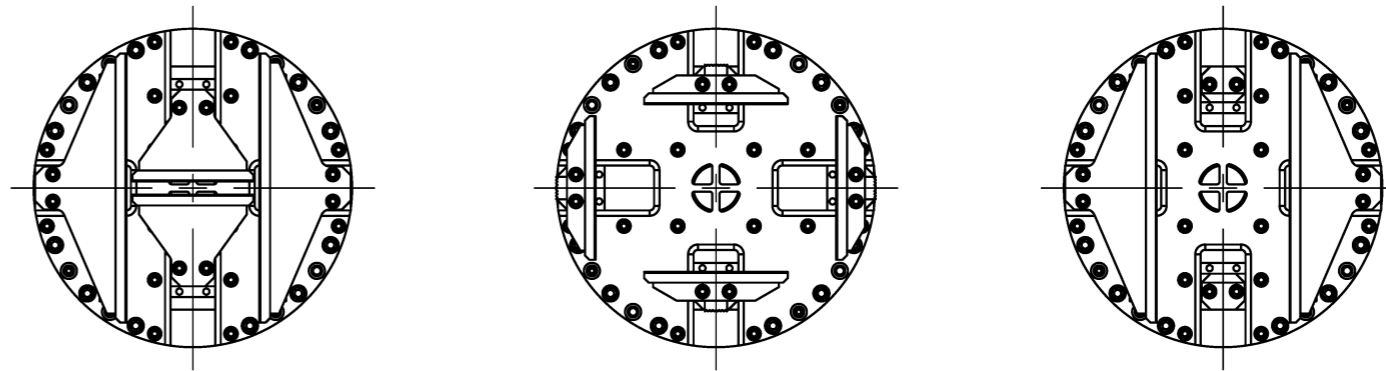
First Set of Jaws

- Internal Clamping, First Range: ϕ 20-95 mm
- Internal Clamping, Second Range: ϕ 70-145 mm
- Slotting: No. 5-14
- I-Beam Slot Beam: No. 10-14

Second Set of Jaws

- Internal Clamping, First Range: ϕ 140-215 mm
- Internal Clamping, Second Range: ϕ 190-265 mm
- External Clamping, First Range: ϕ 230-300 mm
- External Clamping, Second Range: ϕ 280-355 mm
- I-Beam Slot Beam: No. 14-25 (compatible with the First Set of Jaws)

I-Beam Slot Beam Jaws (compatible with the First Set of Jaws)
I-Beam Slot Beam: No. 18-28



Technical Requirements

- The chuck can hold round tubes with a diameter of ϕ 20- ϕ 355 mm and can support tubes with an outer diameter of less than ϕ 355 mm.
- The theoretical value: Under an air pressure of 0.7 MPa, the maximum clamping force of a single jaw is $4.5 \pm 10\%$ kN ($459 \pm 10\%$ kgf); the minimum driving air pressure of the chuck is 0.3 MPa, and the single jaw stroke is 42 mm.
- The internal clamping range is ϕ 20- ϕ 265 mm; the external clamping range is ϕ 230- ϕ 355 mm.
- The return stroke accuracy of the chuck is ≤ 0.15 mm, and the repeat positioning accuracy is ≤ 0.15 mm.
- Specified rotation speed is 150 r/min; rotational inertia is 48000 kg·cm²; gear reduction ratio is 1:3.

借通用件登记

描图

校描

旧底图总号

签字

日期

外形图							常州市润洲精密机械科技有限公司		
							350后卡		
							RY350-13-0050		
标记	处数	更改文件号	签字	日期	图样标记	版本	数量	重量	比例
设计			标准化		S	A	1	380	1:8
审核					共 1 页		第 1 页		
工艺			日期						