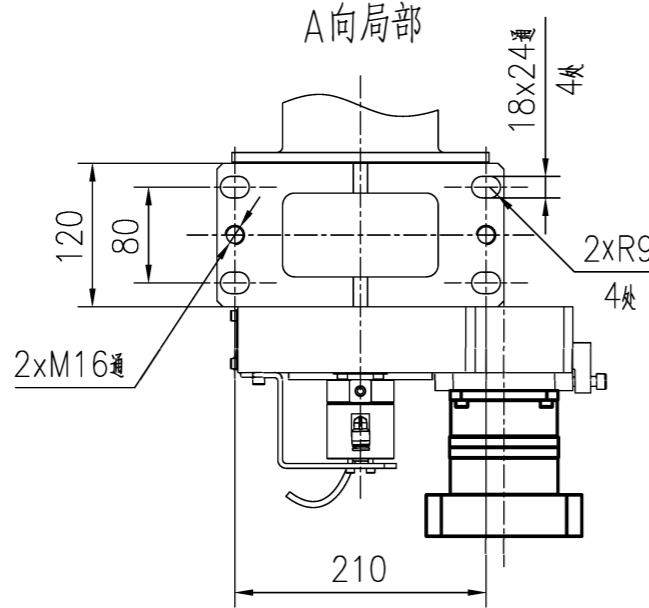
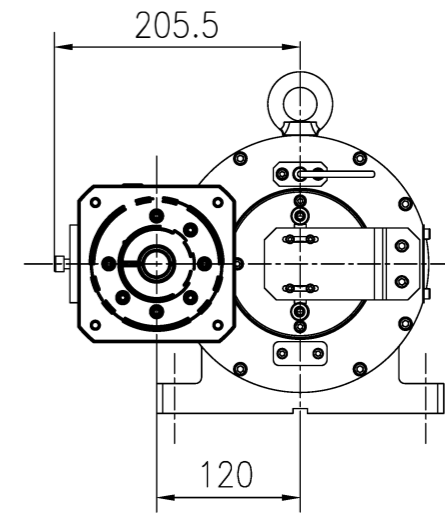
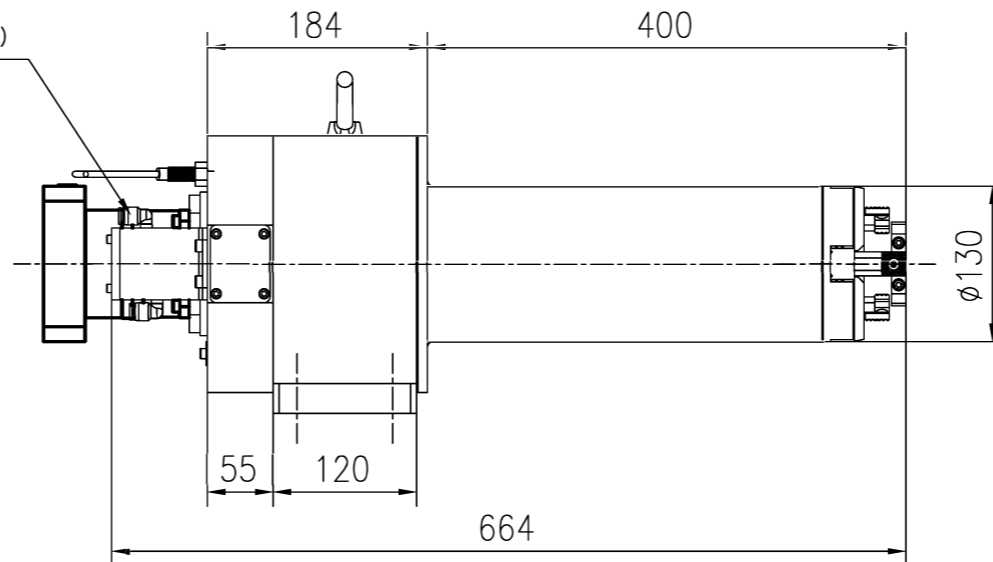
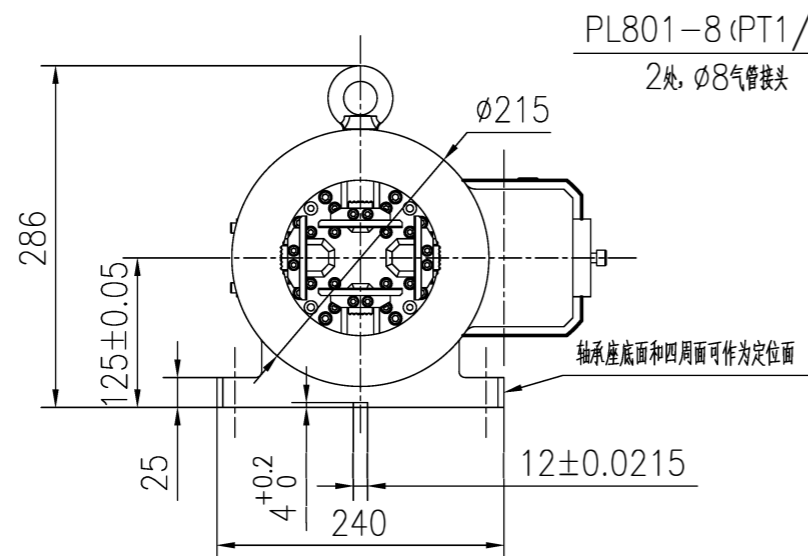


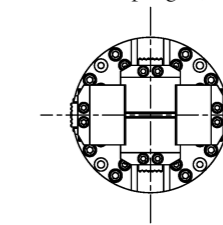
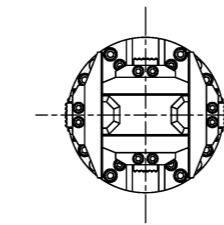
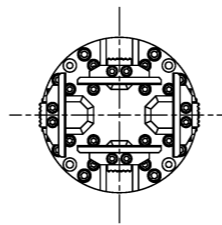
RY130-13-0010



Pad 1 Support
Supports internal and external clamping of round tubes, square tubes, and rectangular tubes
Internal clamping: $\phi 55$ - $\phi 85$ mm
External clamping: $\phi 100$ - $\phi 130$ mm

Pad 2 Support
Supports internal and external clamping of round tubes, square tubes, and rectangular tubes
Internal clamping: $\phi 35$ - $\phi 65$ mm

Pad 3 Support
Supports internal and external clamping of round tubes, square tubes, and rectangular tubes
Internal clamping: $\phi 5$ - $\phi 35$ mm
External clamping: $\phi 100$ - $\phi 130$ mm



Technical Requirements

- The chuck can hold round tubes with a diameter of $\phi 5$ - $\phi 130$ mm and can support tubes with an outer diameter of less than $\phi 130$ mm.
- The theoretical value: Under an air pressure of 0.7 MPa, the maximum clamping force of a single jaw is $0.75 \pm 10\%$ kN ($75 \pm 10\%$ kgf); the minimum driving air pressure of the chuck is 0.3 MPa, and the single jaw stroke is 20 mm.
- The internal clamping range is $\phi 5$ - $\phi 85$ mm (requires interchangeable pads), and supports rectangular tubes with Pad 1, Pad 2, and Pad 3 combinations.
- External clamping range: $\phi 100$ - $\phi 130$ mm.
- The chuck's return stroke accuracy is ≤ 0.10 mm, and the repeat positioning accuracy is ≤ 0.10 mm.
- Specified rotation speed is 150 r/min; rotational inertia is 1500 Kg · cm ; gear reduction ratio is 1:3.

借通用件登记

描图

校描

旧底图总号

签字

日期

外形图										常州市润洲精密机械科技有限公司	
										130中实后卡	
										RY130-13-0010	
标记	处数	更改文件号	签字	日期	阶段标记	版本	数量	重量	比例		
设计			标准化		S	A	1	60	1:6		
审核					共 1 页		第 1 页				
工艺			日期								