

Platisil™ HPLC Columns

Features of Platisil™ Columns

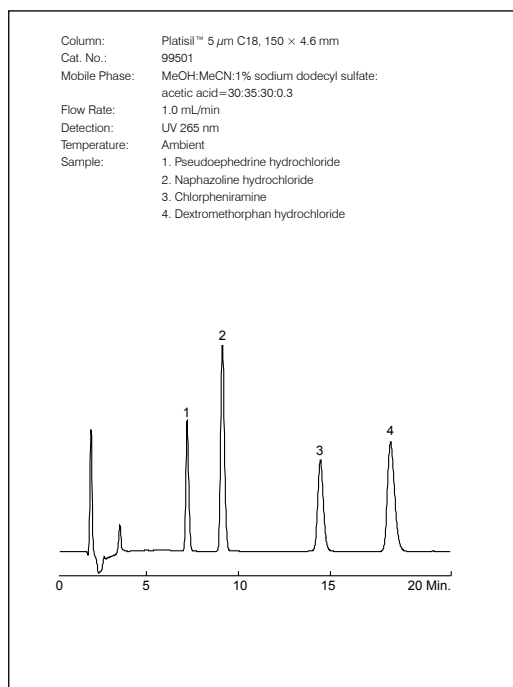
- Universal and cost-effective columns
- Unique selectivity, excellent peak shape
- Useful in normal or reversed phase applications
- High loadability



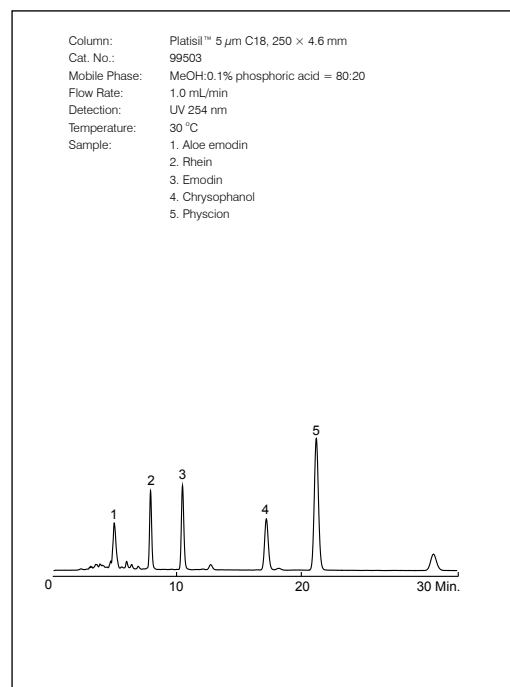
Platisil™ Material Characteristics

Bonded phase	Particle size (µm)	Pore size (Å)	Surface area (m ² /g)	Purity (%)	Phase density (µmol/m ²)	Carbon loading (%)	pH range	Endcapping
C18	5	100	440	> 99.999	1.8	15	1-11	Yes
NH ₂ NEW	5	100	440	> 99.999	3.2	7	2-7.5	No
CN NEW	5	100	440	> 99.999	4.8	12	1.5-7.5	Yes
Silica NEW	5	100	440	> 99.999	-	-	1.5-7.5	No
PH NEW	5	100	440	> 99.999	4.1	14	1.5-7.5	Yes

Cold Medicine



The Active Ingredients of Rhubarb



Platisil™ Ordering Information

5 µm Analytical Columns

Phases	150 x 4.6	250 x 4.6
Platisil™ C18	99501	99503
Platisil™ NH ₂	99504	99505
Platisil™ CN	99506	99507
Platisil™ Silica	99508	99509
Platisil™ PH	99510	99511