

MC-24 Centrifuge

Optional rotor

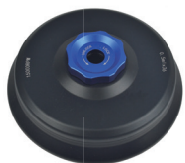
13. One machine for multiple purposes, suitable for 0.2, 0.5, 1.5, 2.0, 5.0ml centrifuge tubes and PCR centrifuge tubes, four rotors are available.



MC-A: 5ml×18
Maximum speed:15000rpm
Max. RCF:20867×g



MC-B: 0.2ml×32/8-tube strips×4
Maximum speed:15000rpm
Max. RCF:17624×g



MC-C: 0.5ml×36
Maximum speed:15000rpm
Max. RCF:20846×g



MC-D: 0.2ml/0.5ml/1.5ml/2ml×24
Maximum speed:15000rpm
Max. RCF:20519×g



MC-1: 2ml tube adaptor to 0.2ml
MC-2: 2ml tube adapter to 0.5ml

Features

- High-speed and stable operation, the rotor and the motor shaft are matched with high-precision cones, high concentricity, and low operating noise.
- Both the upper cover and the lower shell adopt high-strength metal protective rings, which have high structural safety and ensure the safe operation of the rotor at high speed.
- The invention patent of the upper cover safety lock ensures the safety during operation. It automatically pops up after the operation is completed, and has one-key open cover function.
- Adopting the three-dimensional air inlet circulation cooling method, the cooling effect is good, and the temperature rise of the rotor is low.
- After the centrifugation is finished, the sound prompts and the cover will automatically opened, which is convenient for the sample to cool down; the brake is soft to protect the special sensitive samples.
- Powerful DC brushless motor, maintenance-free, fast drive, ultra-quiet operation, low noise level.
- The speed up/down speed is adjustable, suitable for different experimental requirements.
- It adopts 4.3-inch color LCD screen, which can display the speed, centrifugal force and time at the same time.
- The buzzer prompts after the operation is completed, with the function of displaying the running status and prompting the error code.
- With PROG key, you can call the built-in 10 groups of programs with one key, which is convenient and quick to use.
- Equipped with a momentary centrifugal button, which can be centrifuged quickly to meet more experimental needs.
- High-strength aluminum alloy rotor has no service life limit and can be sterilized by high temperature and high pressure.

Parameters

Model	MC-24	Safety performance	High-strength metal protection ring, safety door lock, overspeed, status diagnosis
Speed Range	500~15000rpm(increment:100rpm)	Voltage	AC220V, 50Hz
Rotor capacity	0.2ml/0.5ml/1.5ml/2ml×24; 0.5ml×36; 5ml×18; PCR strips×4	Other functions	Speed/acceleration display function, instantaneous centrifugal function, running progress display, voice prompt function
Max. RCF(×g)	20867×g	Max. power	500W
Timing range	1s~99min59s	Fuse	250V, 10A, φ5×20
Speed up/down time range	25 ~ 45s(Can be set in the program)	Dimensions	W.238x D.335 x H.208mm
Noise(dB)	≤62dB	Net weight	13kg