

# NK200-1B Sample Concentrator (visible)

## Concentrator Series

### Introduction

Sample Concentrator (visible) is mainly used for concentrating or preparing sample in batch. Such as drug screening, hormone analysis, liquid phase and mass spectrometry in the analysis of sample preparation. It works by blowing nitrogen in the surface of sample which is being heated to accelerate evaporating and separating the solvent in the samples without oxygen.

### Feature

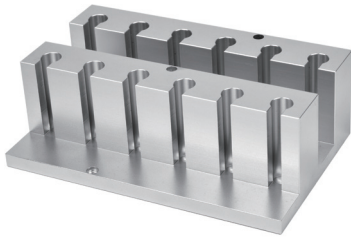
1. Synchronously working with heating by dry bath in the bottom and nitrogen blowing on the surface accelerates liquid evaporation and sample concentration.
2. The length of a standard gas needle is 150mm.
3. The height of the air chamber plate can be adjusted. The unique characteristics: Sample surface in the tube can be observed while concentrating.
4. Gas needle is controlled independently. Separately blow of each needle and flow regulating of each needle are available to avoid gas waste.
5. The entire equipment can be put into ventilation cabinet when the concentration sample in toxic solvents.
6. Built in overheat protection, automatic fault detection and fault beep alarm devices.
7. LED displays immediate temperature and diminishing time. Operation is simple and convenient.
8. Standard configured air cavity and adjustable bracket.

### Parameter

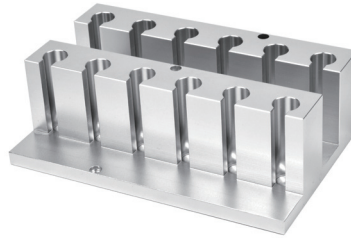
Model	NK200-1B
Temp. Control Range	R.T.+5°C~150°C
Temp. Setting Range	5°C~150°C
Temp. Stability@40~100°C	±0.5 °C
Temp. Stability@100~150°C	±1°C
Block Temp. Uniformity@100°C	±0.5 °C
Block Temp. Uniformity@150°C	±1 °C
Temp. Display Accuracy	0.1 °C
Heating Speed	≤30min (40°C to 150°C)
Time Range	1min~99h59min
Needle Plate Max. Lift Stroke	285mm
Gas-in Joint Outer Diameter	Φ7mm
Nitrogen Pressure	≤0.1MPa
Nitrogen Flow Rate	0~10L/min
Needle Length	150mm
Sample Capacity	1 Standard Visible Block
Voltage	AC 220V/AC 110V, 50/60Hz
Power	400W
Fuse Protector	250V, 3A/6A, Φ5×20
Dimension (WxDxH)	W.220xD.260xH.525mm
Net Weight	5.8kgs



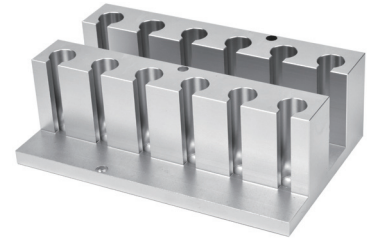
## Accessories



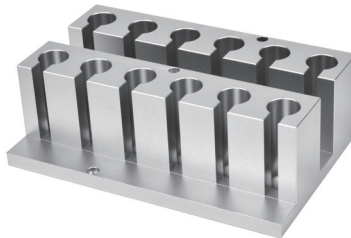
NK01



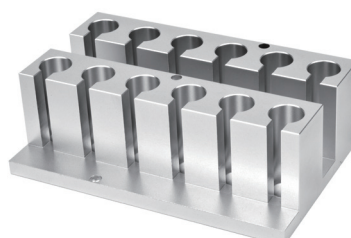
NK02



NK03



NK04



NK05



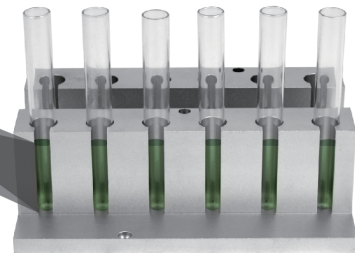
NK06



NK07



Visible Blocks Picture:



## Notice

Optional blocks from NK01—NK07. Blocks can be interchanged easily. Commonly used configuration NK05 block.

## Accessories Parameter

Cat#	Spec	Dia. of hole	Hole bottom shape	Block dimension
NK01	10 mm x 12	10.5 mm	Round bottom	153.5 x 95.5 x 50 mm
NK02	12 mm x 12	12.5 mm	Round bottom	153.5 x 95.5 x 50 mm
NK03	13 mm x 12	13.5 mm	Round bottom	153.5 x 95.5 x 50 mm
NK04	15 mm x 12(7ml tube)	15.5 mm	Round bottom	153.5 x 95.5 x 50 mm
NK05	16 mm x 12(10ml/15ml tube)	16.5 mm	Round bottom	153.5 x 95.5 x 50 mm
NK06	19 mm x 12	19.5 mm	Round bottom	153.5 x 95.5 x 50 mm
NK07	20 mm x 12	20.5 mm	Round bottom	153.5 x 95.5 x 50 mm