

DTC-100H/DTH-100H Dry Bath Incubator with Heated Lid

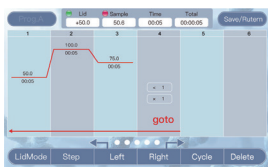
Dry bath series

INTRODUCTION

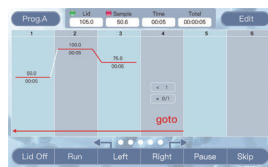
The Dry Bath Incubator with Heated Lid can be widely used in LAMP, NASBA, RPA, sample preservation and reaction and electrophoresis pre-denaturation, serum coagulation, nucleic acid and protein denaturation treatment.

FEATURE

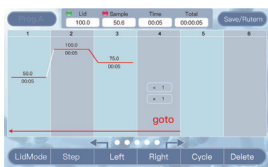
1. Novel and unique appearance, simple interface operation, small size.
2. Using 5-inch TFT high-definition full-touch color screen, can quickly edit the required documents, temperature curve visual display, the setting is convenient and fast, real-time accurate display temperature curve and instrument operation process status.
3. Refrigeration type is based on semiconductor heating and cooling technology, and PID temperature control technology design, the rate of heating and cooling is excellent.
4. Ingenious elastic hot cover structure design, adaptive to different heights of the test tube, to ensure the consistency of the experiment, to achieve the best conditions of the experiment.
5. The hot cover temperature setting has two modes: independent setting mode, block temperature plus setting value.
6. Built-in 10 groups of programs, each group of programs can add or delete temperature steps or cycle steps.
7. Various types of blocks can be selected at need, easy to install and disassemble.



Editing Interface



Standby interface



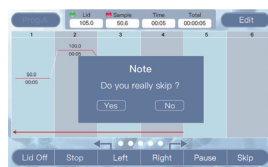
Hot lid mode 1



Hot lid mode 2



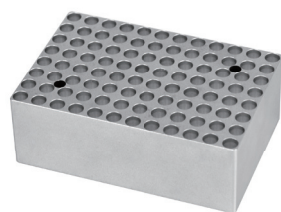
Input Interface



Pause interface



Optional Block



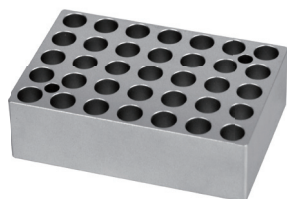
DT-A



DT-B



DT-C



DT-D



Block Parameter

Cat#	Spec	Dia. of hole	Hole bottom shape	Block dimension
DT-A	0.2ml×96	6.7mm	Cone bottom	107×71×38mm
DT-B	0.5ml×54	8mm	Cone bottom	107×71×35mm
DT-C	1.5ml×35	10.8mm	Cone bottom	107×71×27mm
DT-D	2.0ml×35	10.8mm	Round bottom	107×71×27mm

Technical Parameters

Model	DTC-100H(Cooling)	DTH-100H(Heating)
Block temp. setting range	- 10°C~100°C	0°C~100°C
Block temp. control range	(R.T.-25°C)~100°C	(R.T.+5°C)~100°C
Temp. Max. Decrease	R.T. decreases 25°C@R.T. 26°C	/
Hot lid temp. setting range(≤105°C)	0~105°C / Block+(0~105°C)	0~105°C / Block+(0~105°C)
Hot lid temp. control range	R.T.+5°C~105°C	R.T.+5°C~105°C
Time range	1s ~99m59S / 0 is ∞	1s ~99m59S / 0 is ∞
Max. number of steps	10	10
Max. number of cycles	99	99
Block temp. control accuracy	±0.5°C	±0.5°C
Hot lid temp. accuracy	±1.0°C	±1.0°C
Block temp. uniformity	±0.5°C	± 0.5°C
Display accuracy	0.1°C	0.1°C
Heating time (R.T.25°C)	Heating rate (37°C~100°C) ≥7°C/min	Heating rate (37°C~100°C) ≥7°C/min
Cooling time	Cooling rate (100°C~37°C) ≥8°C/min	Fan cooling
Dimension	W.185xD.280xH.160mm	W.185xD.280xH.160mm
Net weight	3.2Kgs	2.7Kgs