

## Unit Information

### WCT800

19 Amps • 2200 Watts • 60 Hz

### WCT800RC

15 Amps • 1800 Watts • 60 Hz

### WCT810

17 Amps • 2025 Watts • 60 Hz

### WCT820 - WCT8206

12.5 Amps • 1500 Watts • 60 Hz

# WARING COMMERCIAL

4 Slice Heavy Duty Toasters

## WCT800

Four 1 1/8" Toast Slots

## WCT800RC

Four 1 1/8" Toast Slots

*No Longer Available*

## WCT810

Two 1 1/8" Toast Slots

Two 1 5/8" Extra Wide Slots

## WCT820

Four Bagel Slots

## WCT8206

Four Bagel Slots with 6' Cord

## Plug Configuration

WCT800 • WCT810

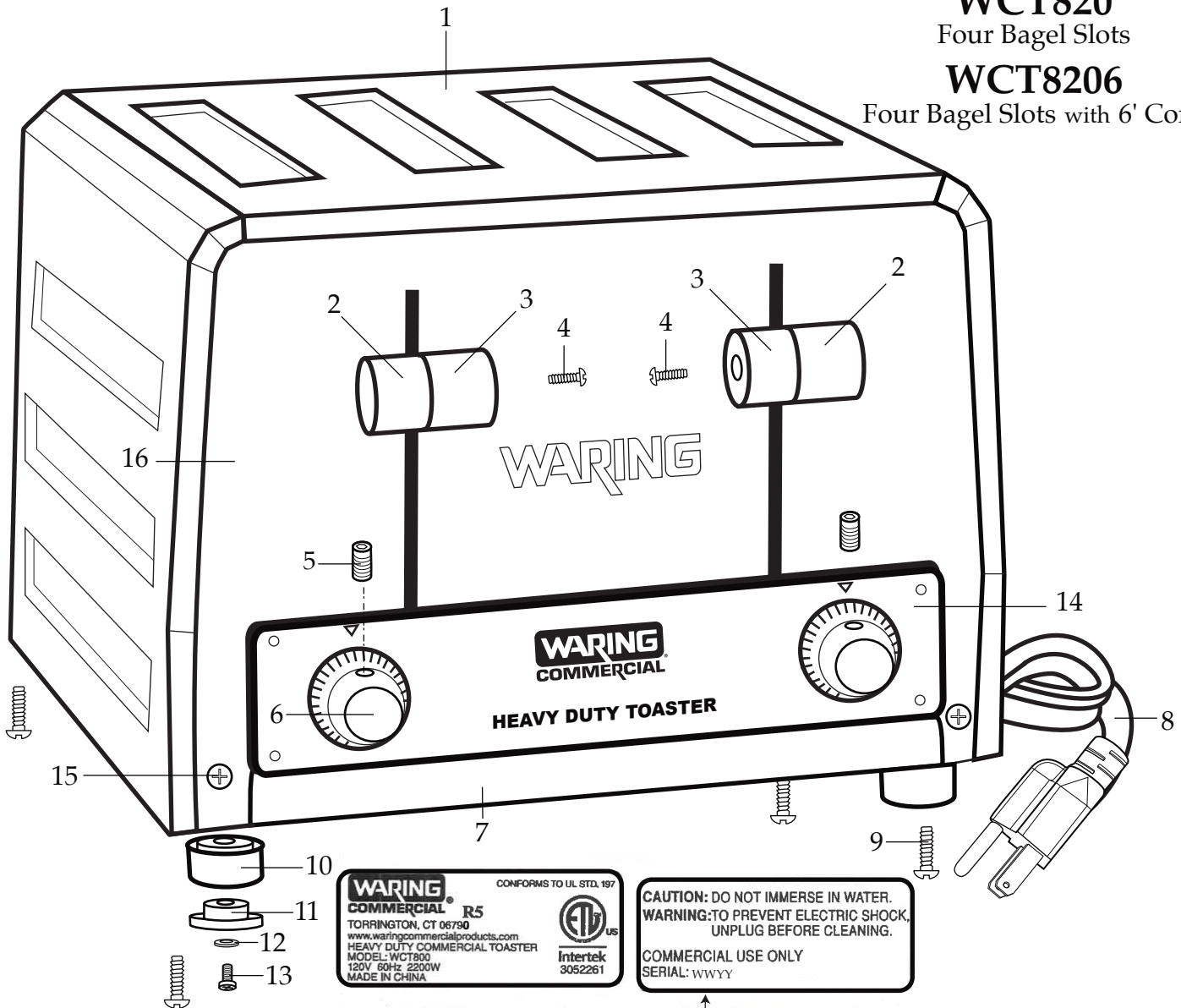


NEMA 5-20

WCT800RC • WCT820  
• WCT8206



NEMA 5-15



WARING  
COMMERCIAL R5  
TORRINGTON, CT 06790  
www.waringcommercialproducts.com  
HEAVY DUTY COMMERCIAL TOASTER  
MODEL: WCT800  
120V 60Hz 2200W  
MADE IN CHINA

CONFORMS TO UL STD. 197

ETL US  
Intertek  
3052261

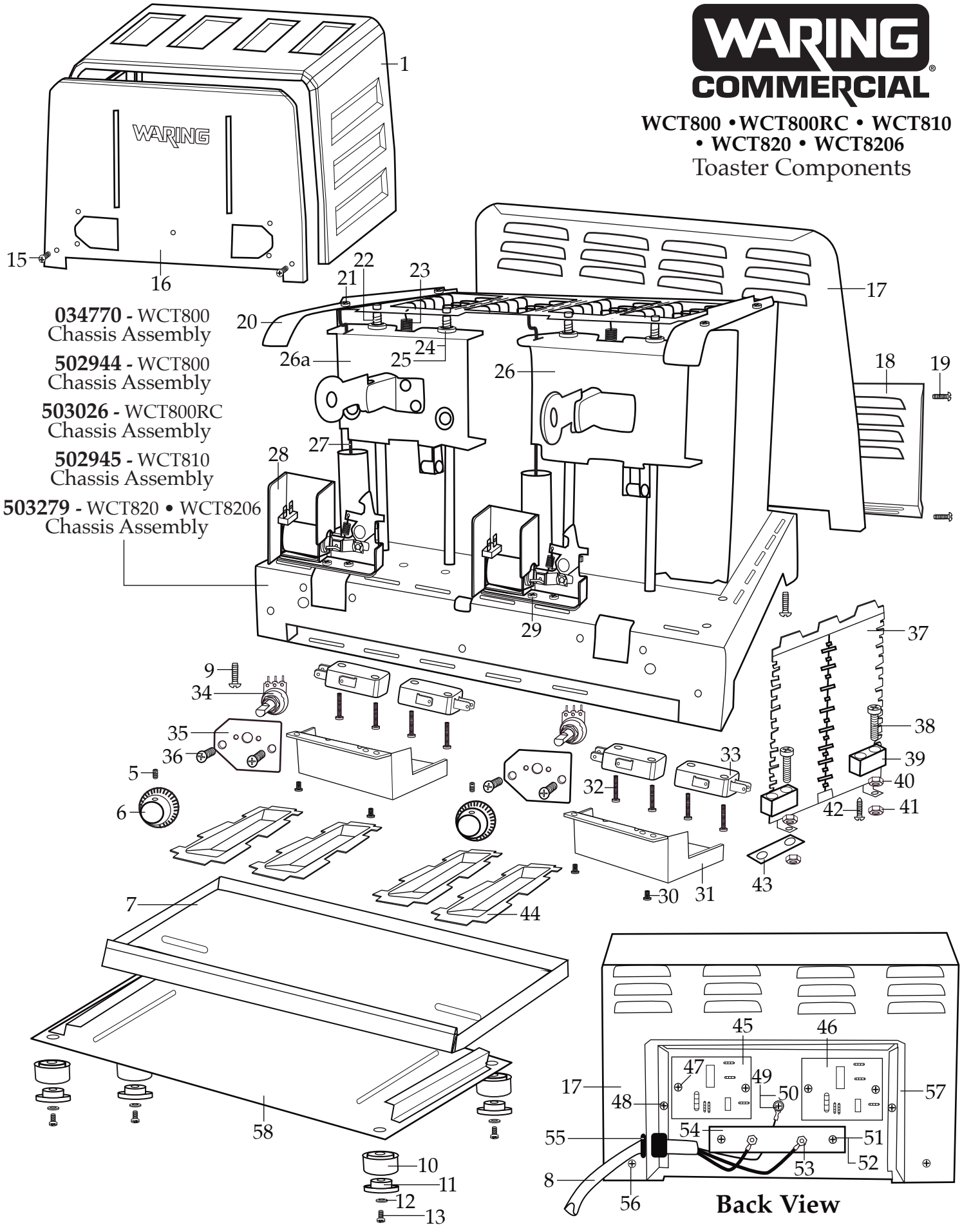
CAUTION: DO NOT IMMERSE IN WATER.  
WARNING: TO PREVENT ELECTRIC SHOCK,  
UNPLUG BEFORE CLEANING.

COMMERCIAL USE ONLY  
SERIAL: WWYY

Date Code Location  
WWYY  
week week | year year



WCT800 • WCT800RC • WCT810  
• WCT820 • WCT8206  
Toaster Components



- 034770 - WCT800 Chassis Assembly
- 502944 - WCT800 Chassis Assembly
- 503026 - WCT800RC Chassis Assembly
- 502945 - WCT810 Chassis Assembly
- 503279 - WCT820 • WCT8206 Chassis Assembly

Back View

## Catalog/Model

WCT800  
WCT800RC  
WCT810  
WCT820  
WCT8206

**WARING**  
**COMMERCIAL**  
314 Ella T. Grasso Ave.  
Torrington, CT 06790  
Tele. 1-800-269-6640  
Fax 860-496-9017  
[www.waringcommercialproducts.com](http://www.waringcommercialproducts.com)

<b>Illustration #</b>	<b>Part #</b>	<b>Description</b>
1	027219 027169 029825	WCT800-WCT800RC Top Cover Plate WCT810 Top Cover Plate WCT820-WCT8206 Top Cover Plate
2	027170	Push Knob (2 required)
3	027171	Push Knob (2 required)
4	027172	Screw (2 required)
5	027173	Set Screw (2 required)
6	027174	Browning Control Knob
7	027175	Crumb Tray
8	027176 027941 029799	WCT800-WCT810 Cord Set WCT800RC-WCT820 Cord Set WCT8206 Cord Set
9	027177	Screw (4 required)
10	027178	Foot (4 required)
11	027179	Rubber Foot (4 required)
12	027180	Washer (4 required)
13	027181	Screw (4 required)
14	502939	Front Panel Assembly
15	027177	Screw (2 required)
16	027182	Front Cover Plate
17	027183	Back Cover Plate
18	027184	Power Box Cover
19	027177	Screw (4 required)
20	027185	Housing Support (2 required)
21	027186	Screw (4 required)
22	027187	Compression Wire Spring (4 required)
23	027188	Moving Bracket Spring (2 required)
24	027189	Bracket Bushing (8 required)
25	027190	C Ring (4 required)
26	502940 502940	WCT800-WCT800RC Moving Bracket Assembly (2 required) WCT810 Moving Bracket Assembly (1 required)
26a	502941 502941	WCT810 Moving Bracket Assembly (1 required) WCT820-WCT8206 Moving Bracket Assembly (2 required)
27	027191	Damper Cylinder Rod (2 required)

## Catalog/Model

WCT800  
WCT800RC  
WCT810  
WCT820  
WCT8206

**WARING**  
**COMMERCIAL**  
314 Ella T. Grasso Ave.  
Torrington, CT 06790  
Tele. 1-800-269-6640  
Fax 860-496-9017  
[www.waringcommercialproducts.com](http://www.waringcommercialproducts.com)

<b>Illustration #</b>	<b>Part #</b>	<b>Description</b>
28	027192	Locking Mechanism
29	027193	Screw (4 required)
30	034768	Screw (4 required)
31	034767	Switch Cover (2 required)
32	034769	Screw (8 required)
33	033456	Micro Switch (4 required)
34	027198	Rheostat (2 required)
35	027199	Insulated Bracket Plate (2 required)
36	027200	Screw (4 required)
37	027201	WCT800 Elements - 17-7268 (8 required)
	027901	WCT800RC Elements - 17-7271 (8 required)
	027221	WCT810 Elements - 17-7269 (6 required)
	029826	WCT820-WCT8206 Elements - 17-7634 (2 required)
38	027202	Screw (16 required)
39	027203	Ceramic Insulator Bracket (16 required)
40	027204	Hex Nut (16 required)
41	027205	Hex Nut (16 required)
42	027206	Screw (16 required)
43	027207	Jumper Bracket
44	027947	Standard Baffle
	027946	Wide Slot Baffle
45	027208	WCT800 Older Units PC Board (2 required)
	027942	WCT800RC PC Board (2 required)
	027291	WCT810 Older Units Toast Side PC Board
46	027290	WCT810 Older Units Bagel PC Board
	027290	WCT820-WCT8206 PC Board (2 required)
47	027209	Screw (4 required)
48	027210	Screw (2 required)
49	027211	Ground Lock Washer
50	027212	Green Ground Screw
51	027213	Screw (2 required)
52	027214	Power PCB Holder (2 required)
53	027215	Hex Nut (4 required)
54	027216	Power Terminal Board

## Catalog/Model

WCT800  
 WCT800RC  
 WCT810  
 WCT820  
 WCT8206

# WARING COMMERCIAL

314 Ella T. Grasso Ave.  
 Torrington, CT 06790  
 Tele. 1-800-269-6640  
 Fax 860-496-9017

www.waringcommercialproducts.com

Illustration #	Part #	Description
55	027217	Strain Relief
56	027177	Screw (2 required)
57	027218	Power Box Body
58	027225	Bottom Cover

## Items Not Shown

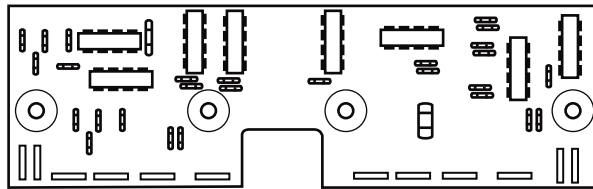
**027214**

Main PCB Holder (4 required)

**027222**

Front Panel Assembly Screw (5 required)

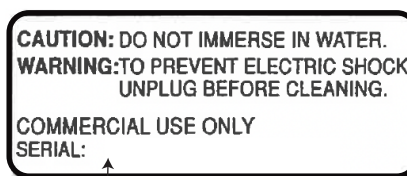
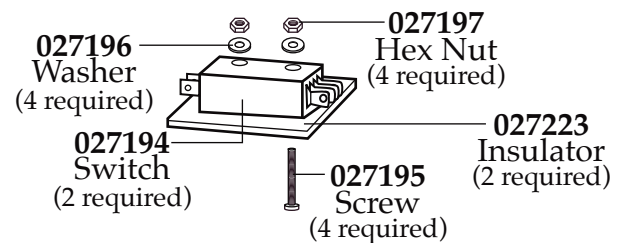
## Current Production WCT800-WCT810 PC Board



**030240**  
 WCT800

**030239**  
 WCT810

## Parts No Longer Used



Date Code Location  
 YY|MM|DD  
 year|year|month|month|day|day