

## AFTERSALE SERVICE

Dear customer,

Thank you so much for purchasing the product from us, we really appreciate your support.

We are aimed to provide the best shopping experience to our customers. We also want to build a mutually beneficial relationship with our customers, and step further to make our brand both reliable, responsible and recommendable.

We hope that our products could meet your needs and expectations, please consider us again if you need more products for your home and kitchen.

The package would be out of our control during shipping, please contact us through your purchasing channel directly if there is anything wrong with the box or contents. We are always here offering you our service.

We will reply your messages within 24 hours, please kindly wait for the response from our professional service team.

Your comfort and contentment are of utmost importance.

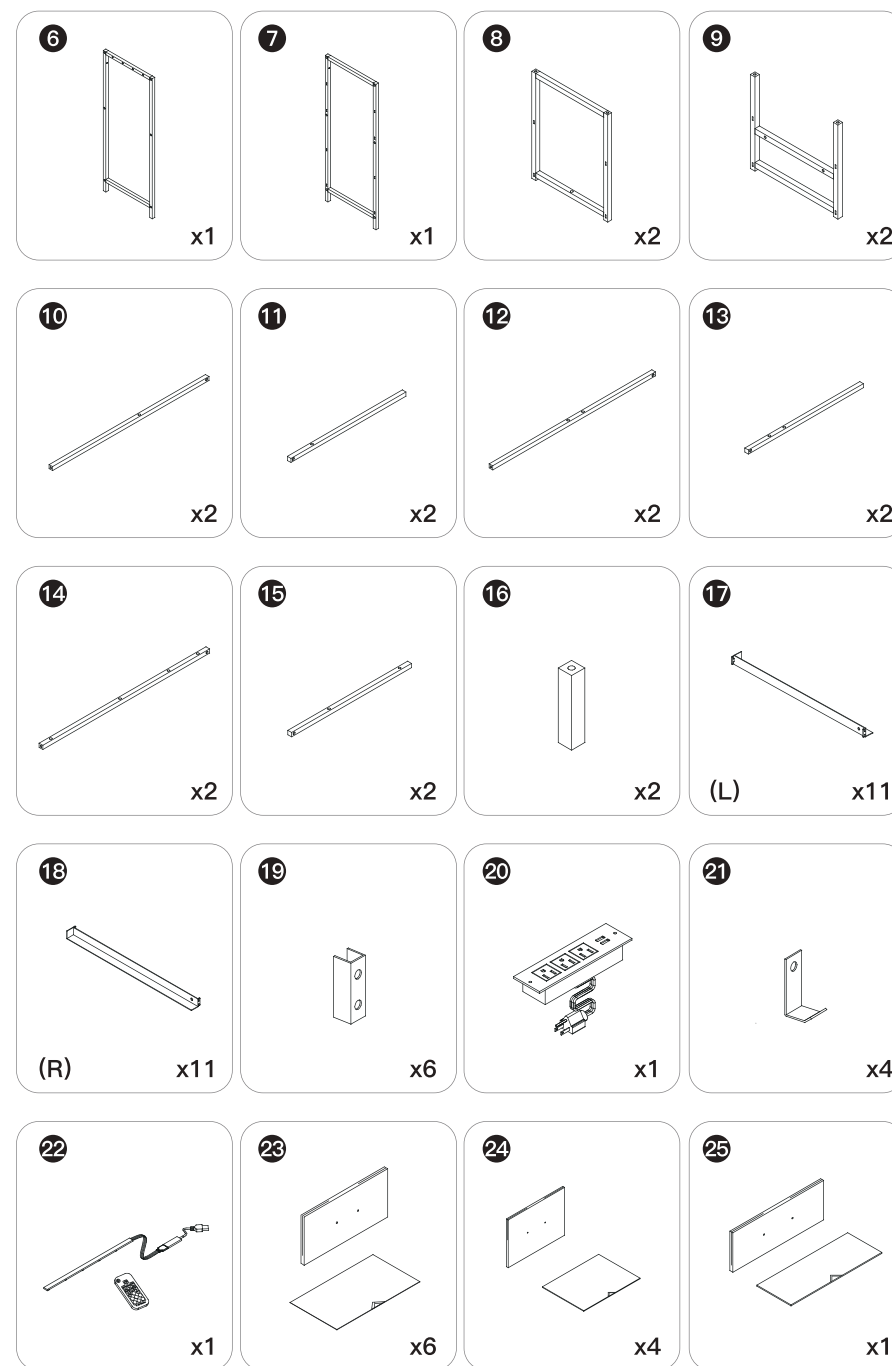
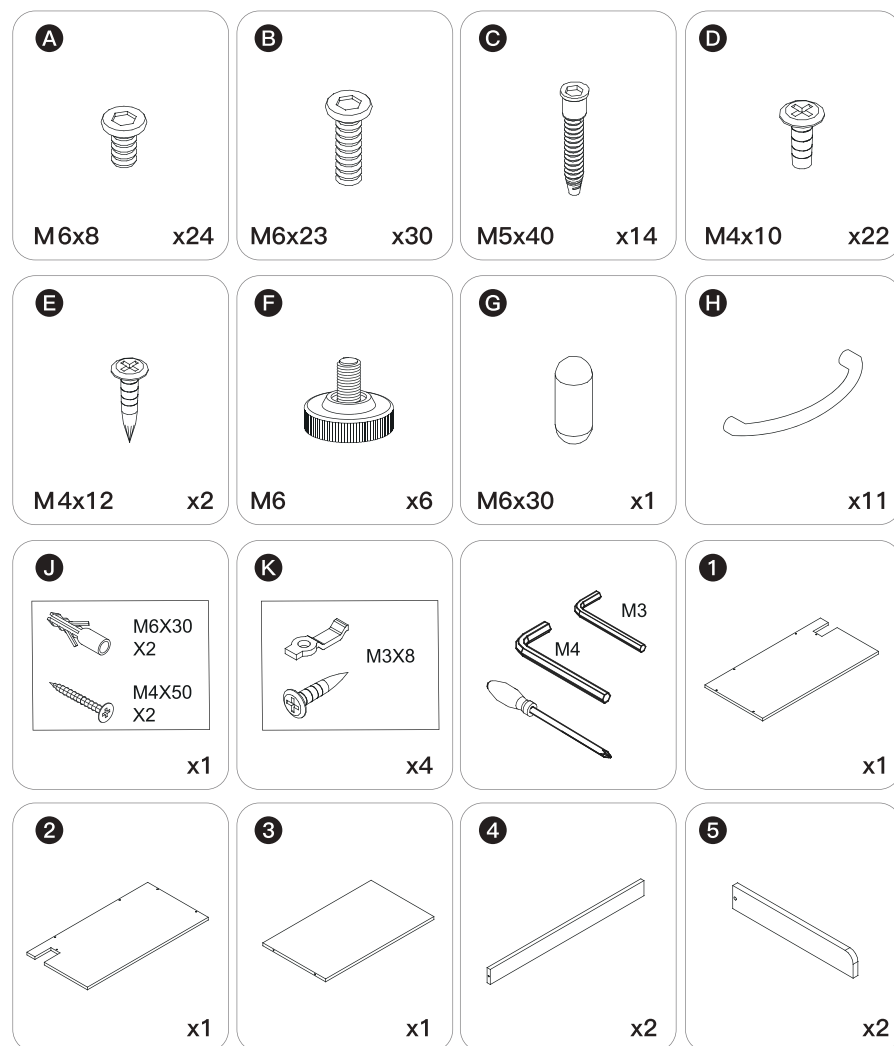
Best Regards,  
Customer Care Specialist

## ASSEMBLY INSTRUCTION



Please check all parts and accessories according to the parts list before assembling, make sure all contents are sufficient and in good condition. If there is any parts missing or defective, please contact us immediately with purchase platform message to get replacement parts.

## PARTS:

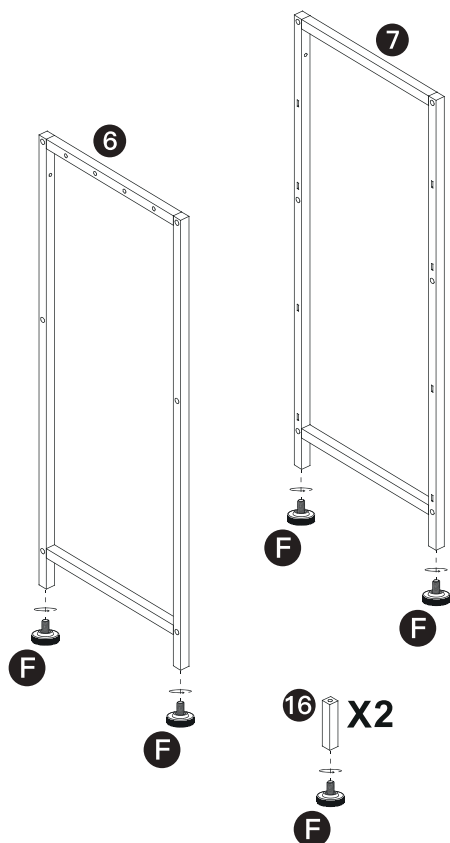
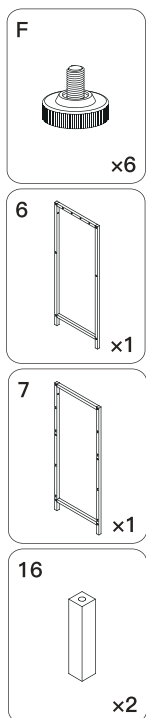


# HOW TO INSTALL

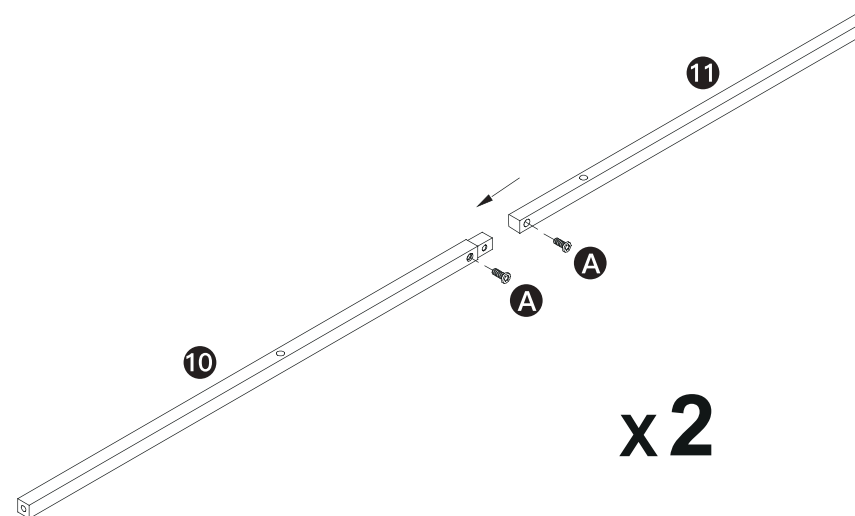
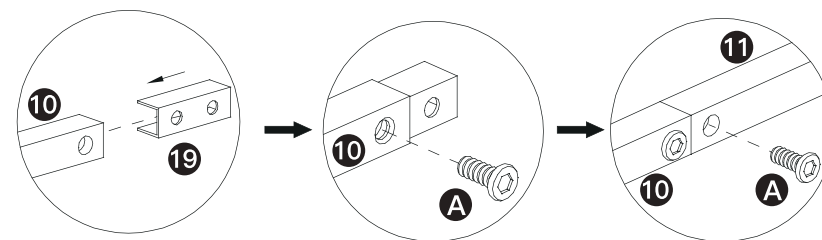
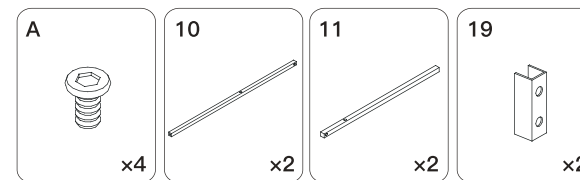


Do not tighten the screws until all of them are in right position.

**Step 1** Install part **F** on part **6** & **7** & **16** .

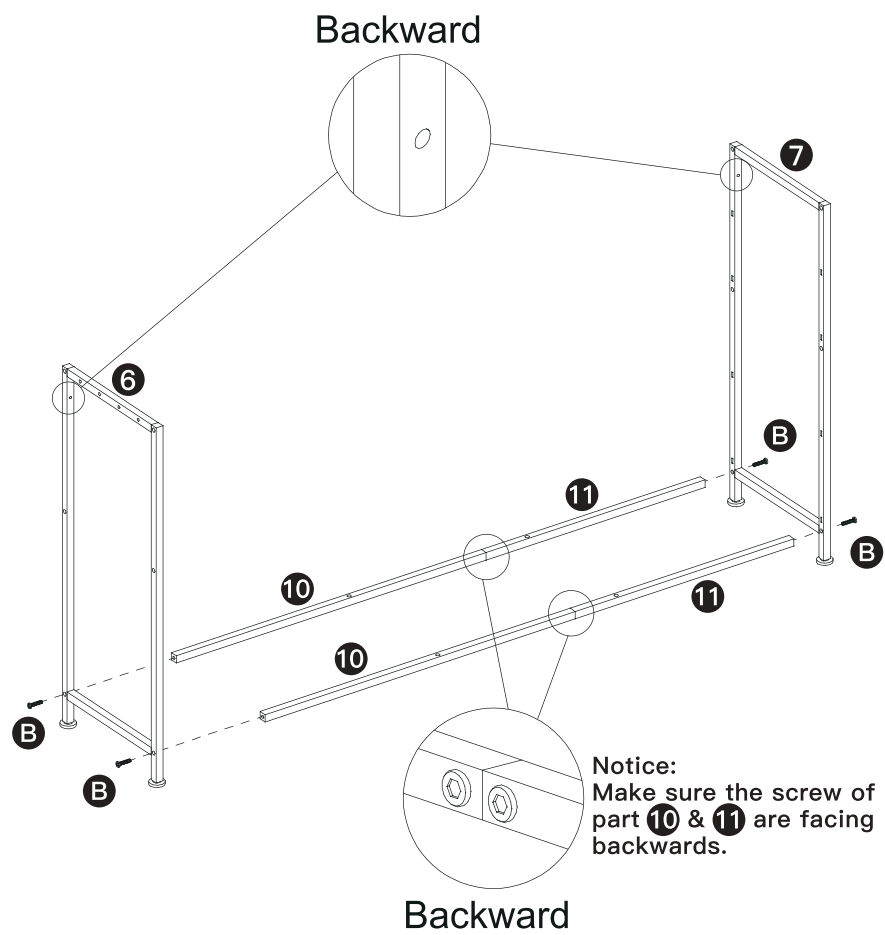
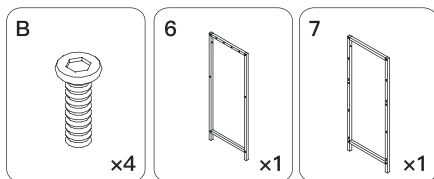


**Step 2** Install part **19** on part **10** , use part **A** to screw them. Then install part **11** on part **19** , use part **A** to connect them.



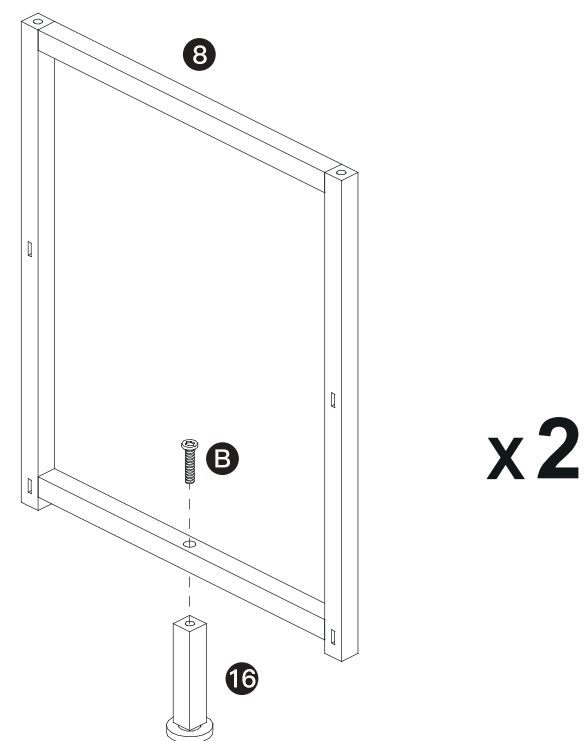
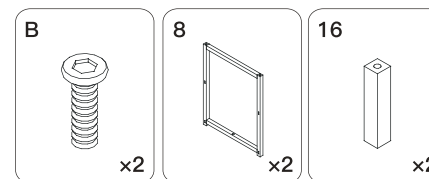
### Step 3

Connect part ⑥ and ⑦ with part ⑩ and ⑪, use part ② to screw them.

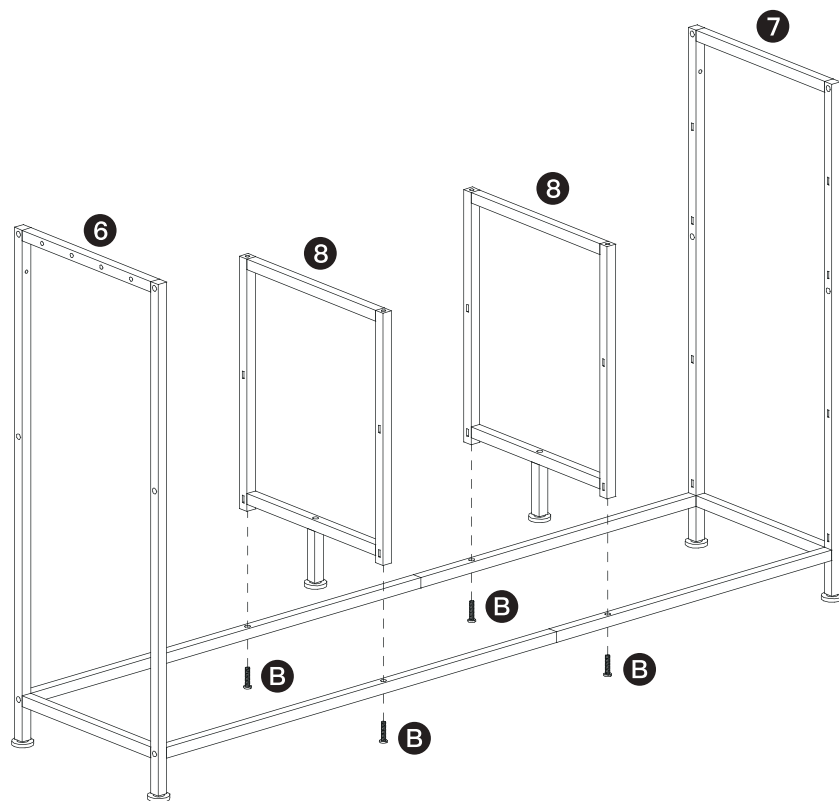
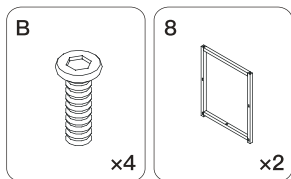


### Step 4

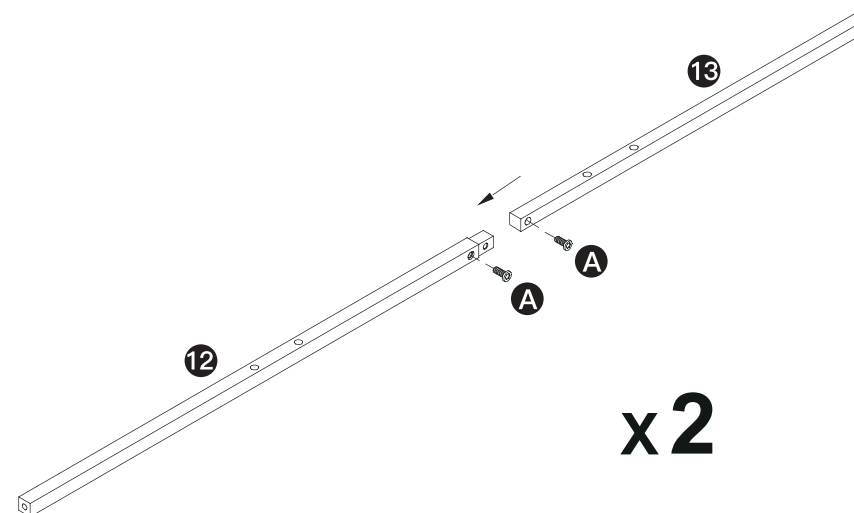
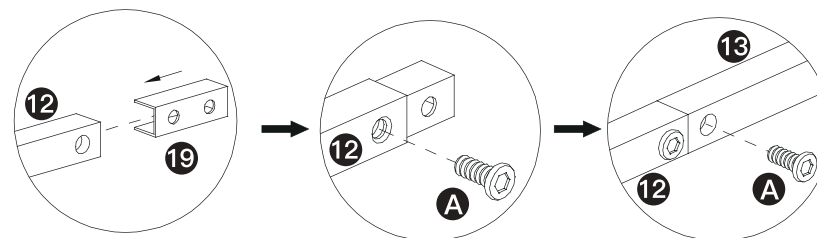
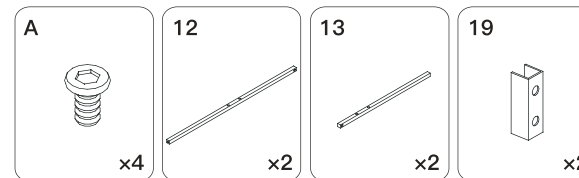
Install part ⑮ on part ⑧, use part ② to screw them.



**Step 5** Install part **8** on part **10** & **11**, use part **B** to screw them.

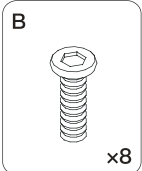


**Step 6** Install part **19** on part **12**, use part **A** to screw them. Then install part **13** on part **19**, use part **A** to connect them.

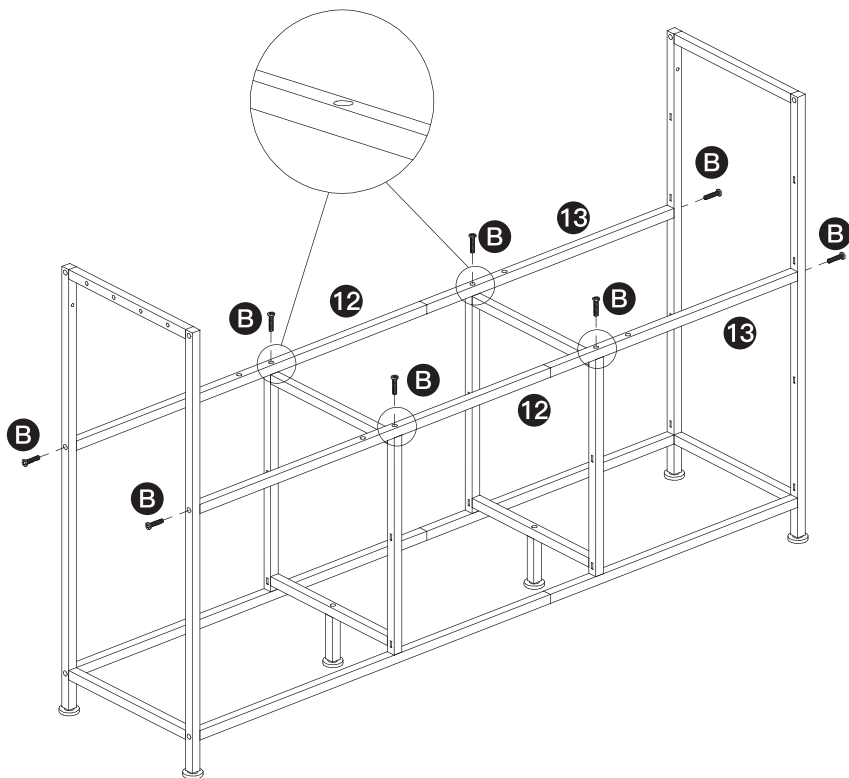


## Step 7

Connect part ⑥ and ⑦ with part ⑫ and ⑬, use part ⑧ to screw them.

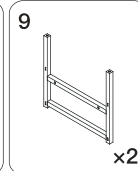
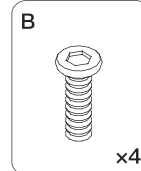


Notice:  
Make sure the larger hole  
of part ⑫ & ⑬ are facing  
upwards.

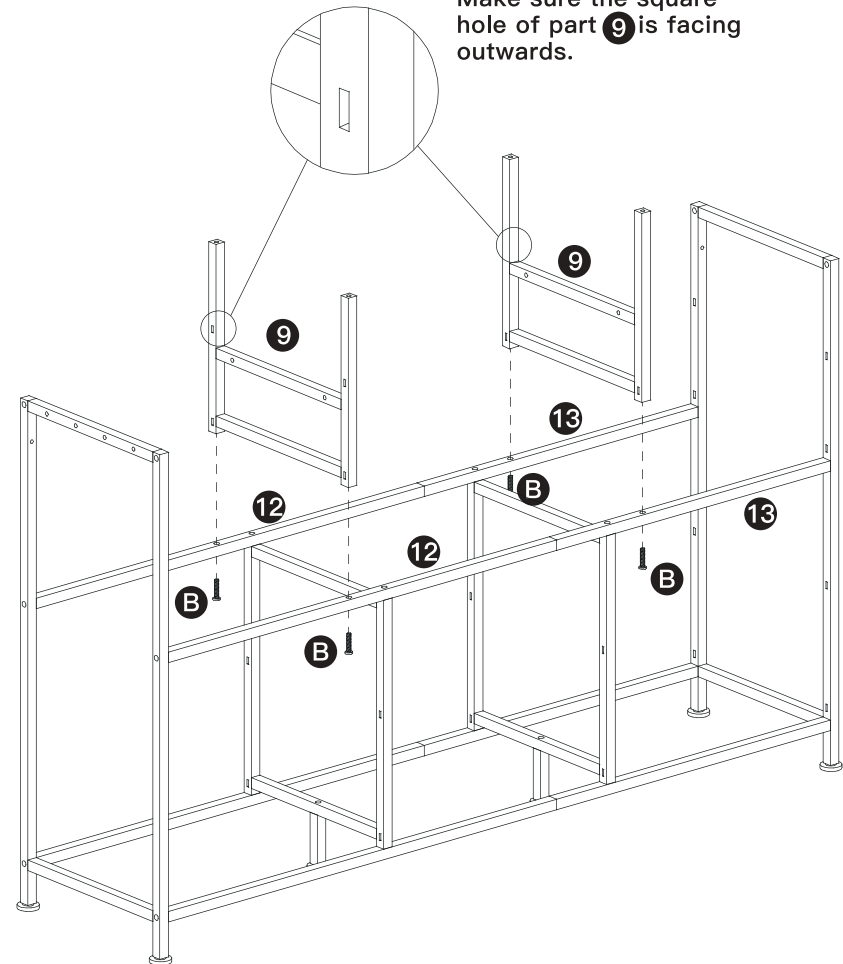


## Step 8

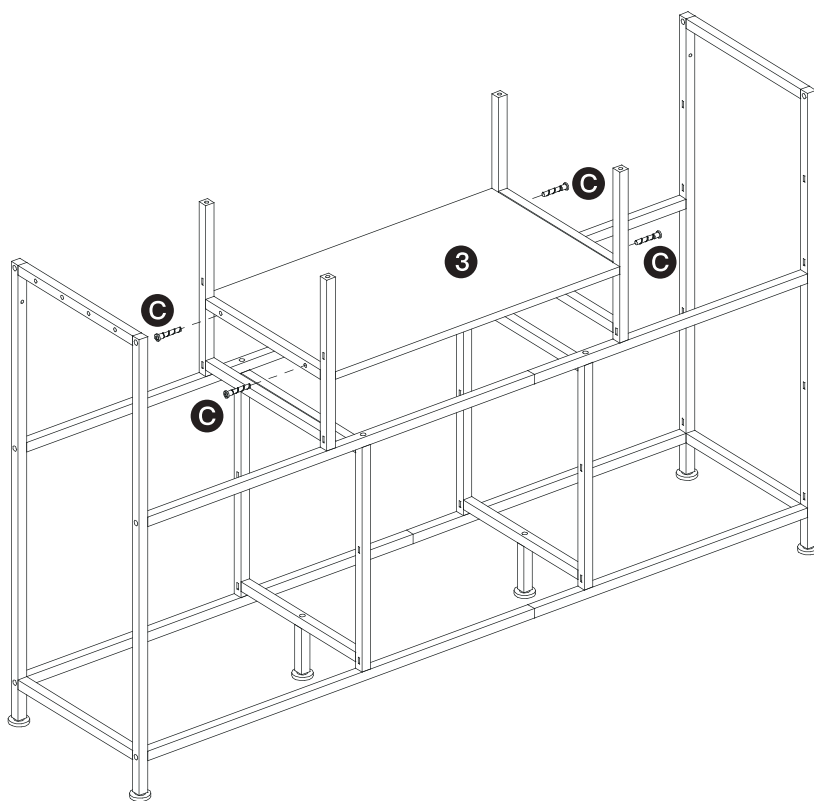
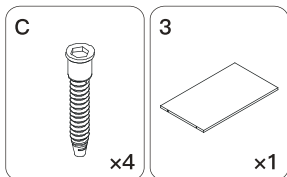
Install part ⑨ on part ⑫ and ⑬, use part ⑧ to screw them.



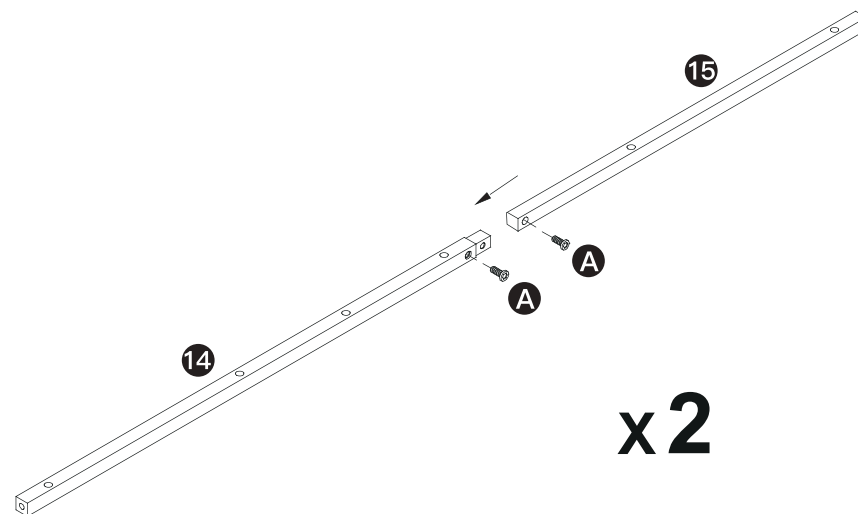
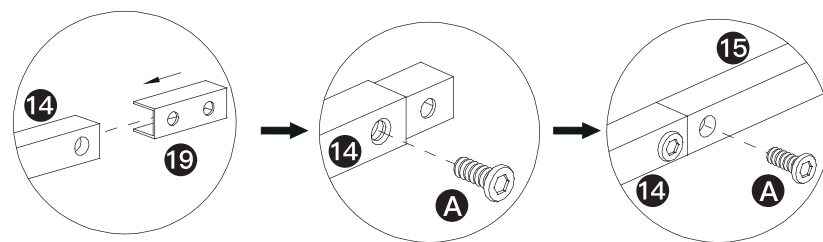
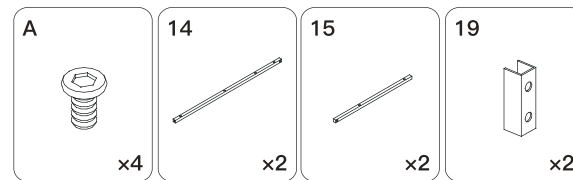
Notice:  
Make sure the square  
hole of part ⑨ is facing  
outwards.



**Step 9** Connect part 9 with part 3, use part C to screw them.

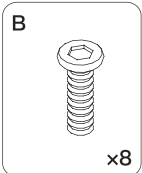


**Step 10** Install part 19 on part 14, use part A to screw them. Then install part 15 on part 19, use part A to connect them.

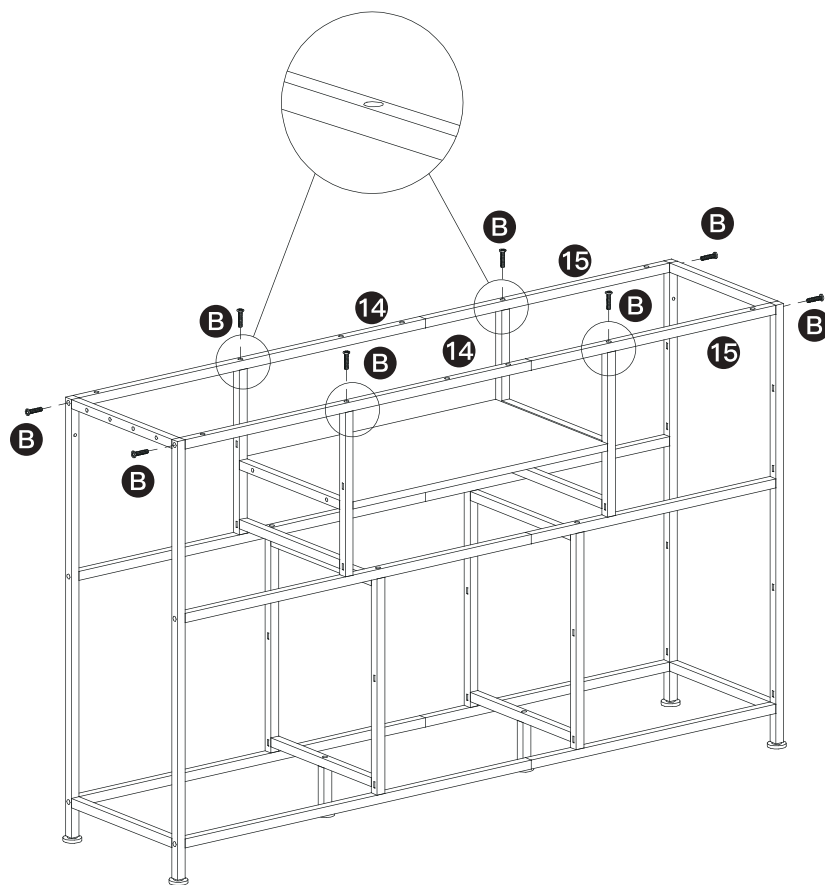


## Step 11

Connect part **6** and **7** with part **14** and **15**, use part **B** to screw them.

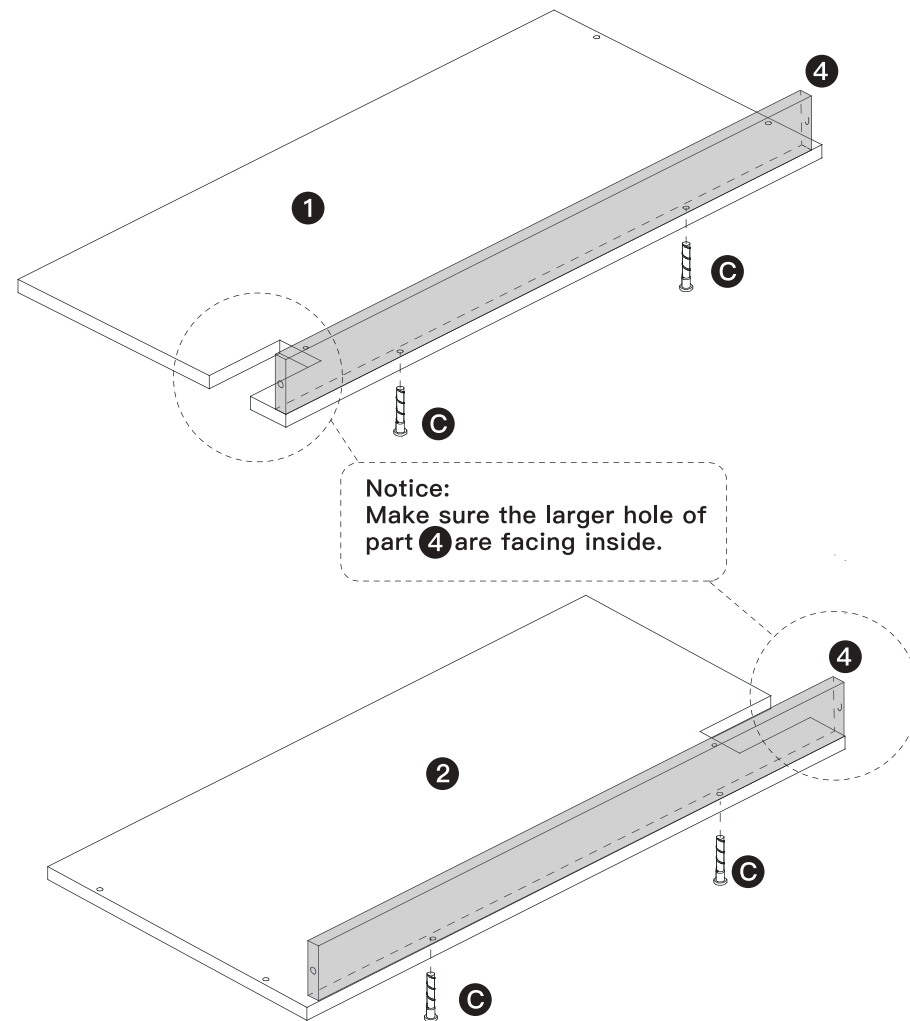
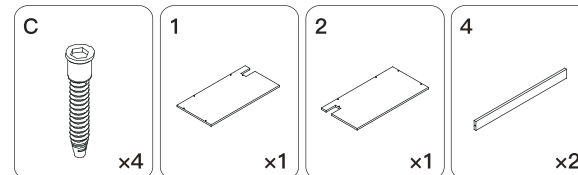


Notice:  
Make sure the larger hole  
of part **14** & **15** are facing  
upwards.



## Step 12

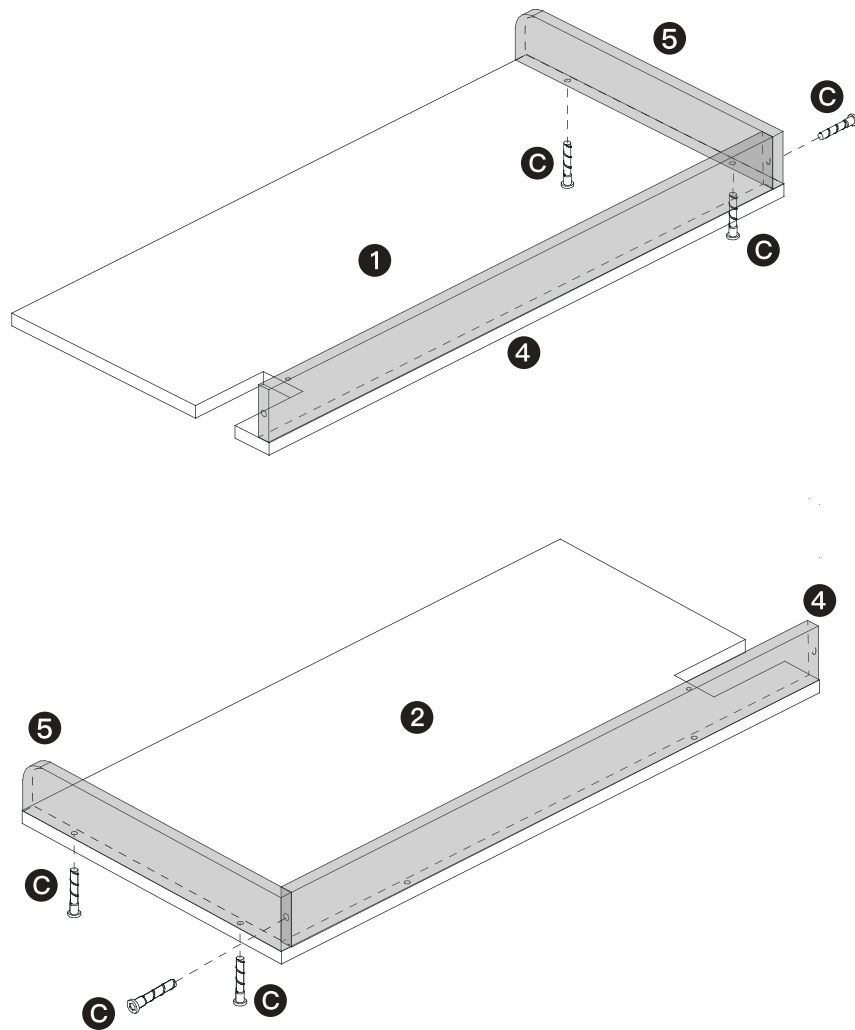
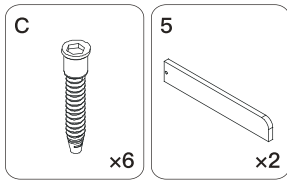
Install part **4** on part **1** & **2**, use part **C** to screw them.





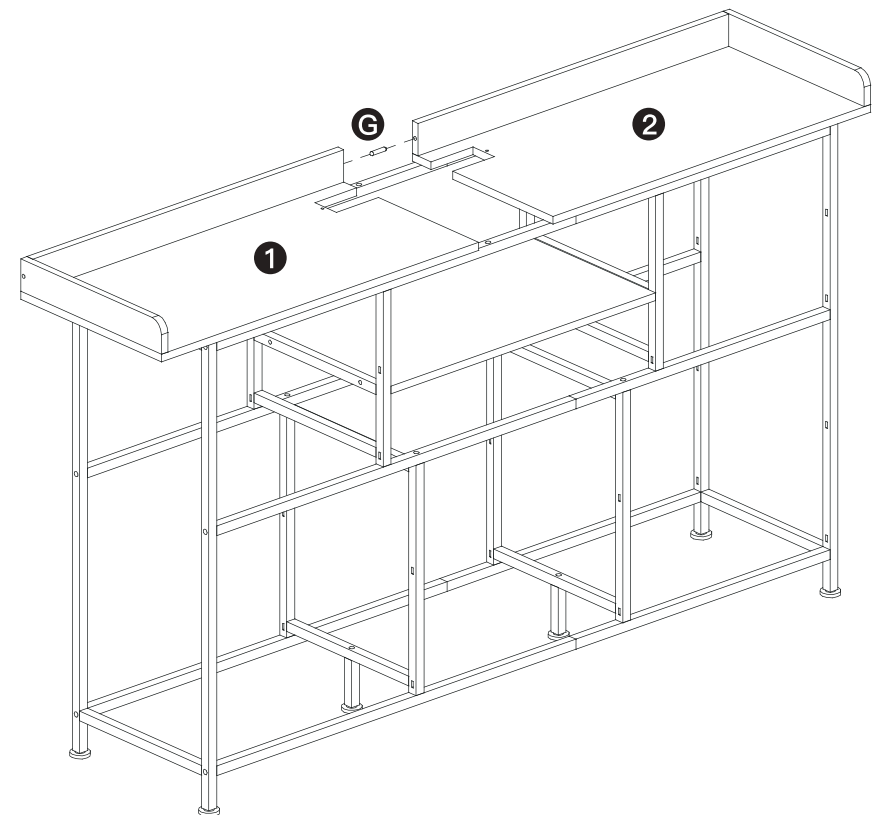
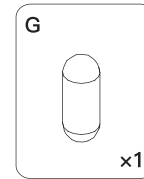
### Step 13

Install part ⑤ on part ① & ②, connect part ⑤ with part ④, use part ③ to screw them.

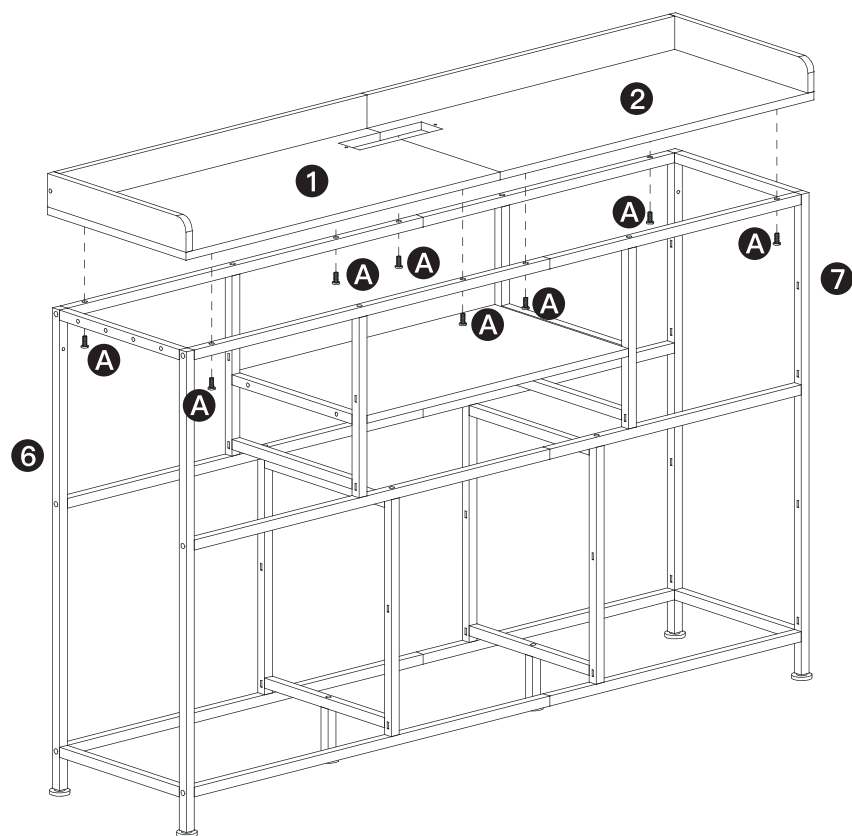
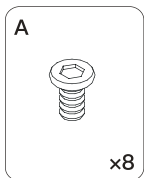


### Step 14

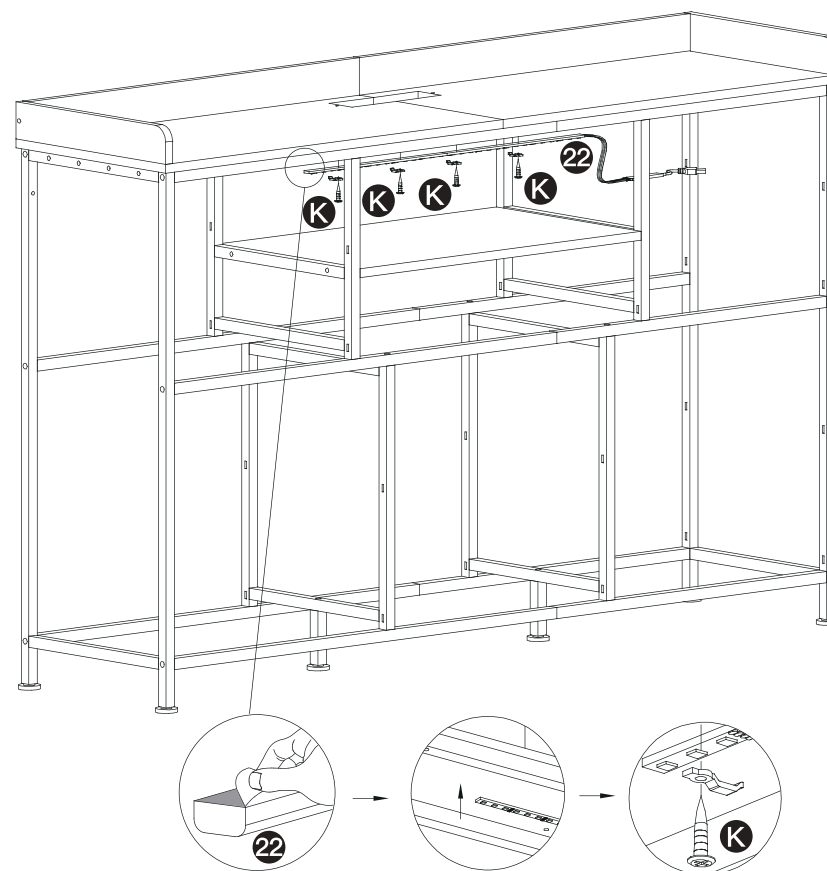
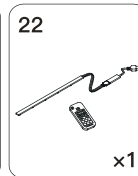
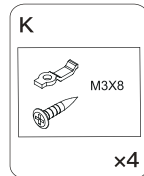
Connect part ① and ② with part ⑥.



**Step 15** Install part ① & ② on the top, use part A to screw them.

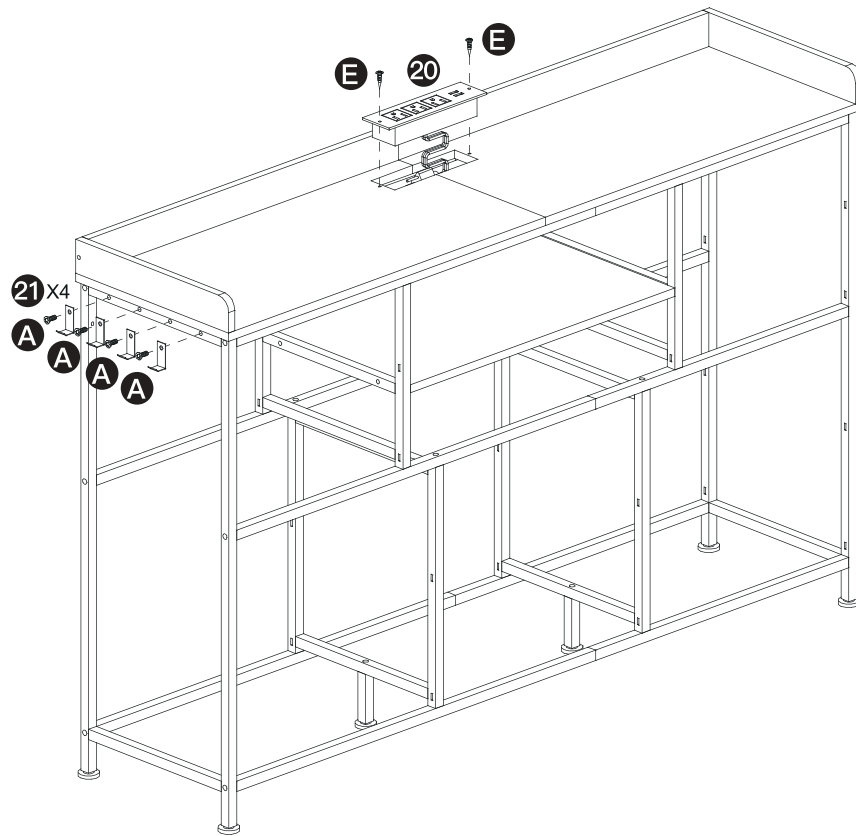
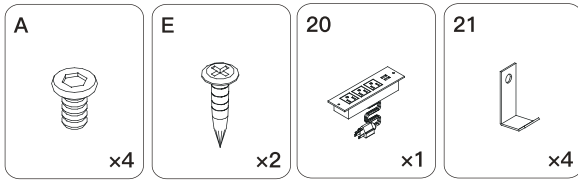


**Step 16** Install part ②② on part ① & ②, use part K to screw them.



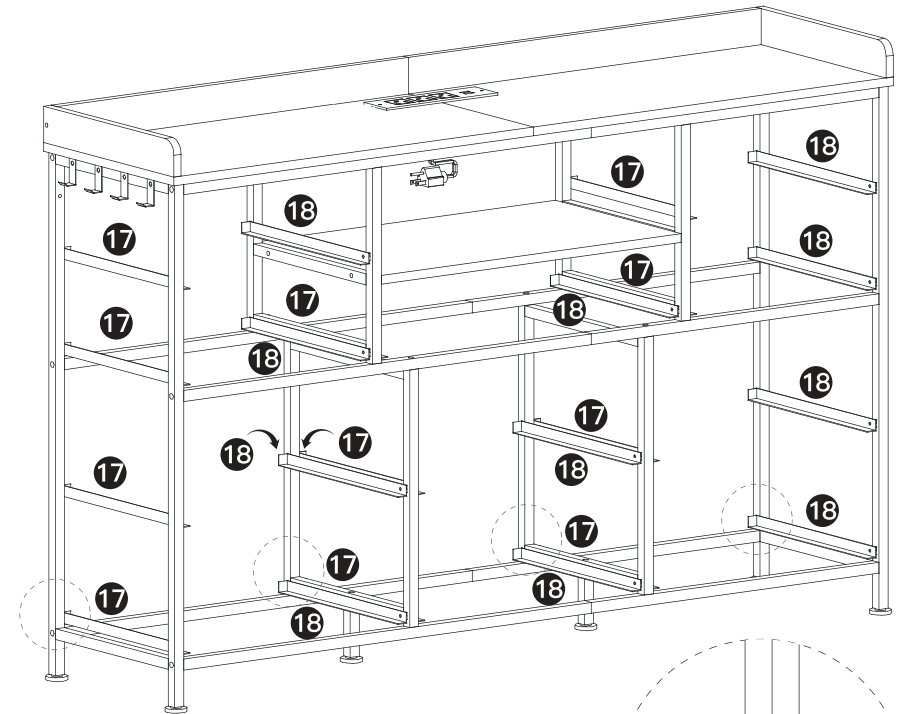
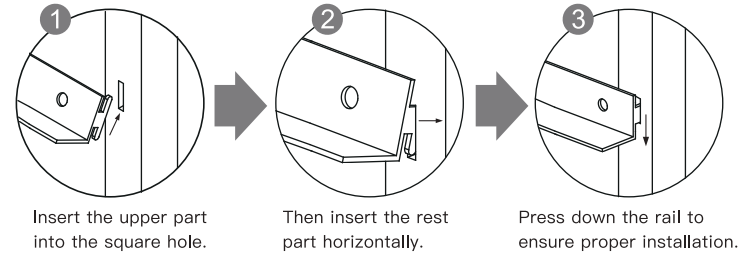
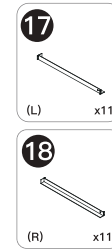
## Step 17

Install part **20**, use part **E** to screw them.  
Install part **21** on part **6**, use part **A** to screw them.

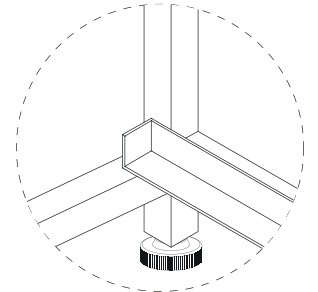


## Step 18

Flip over and install part **17** and part **18** on the frame.

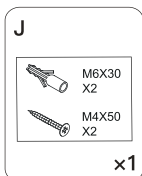


**Notice:** Make sure all the baffles of part **17** & **18** are facing the same direction.



## Step 19

(Optional) Drill two holes on a solid wall and insert wall anchors of part **J** inside the holes, then lock the rack with screws of part **J**.



### NOTICE:

Electric drill does not included in the box.

1

Place the rack against the wall, locate and mark out two holes.

WALL

2

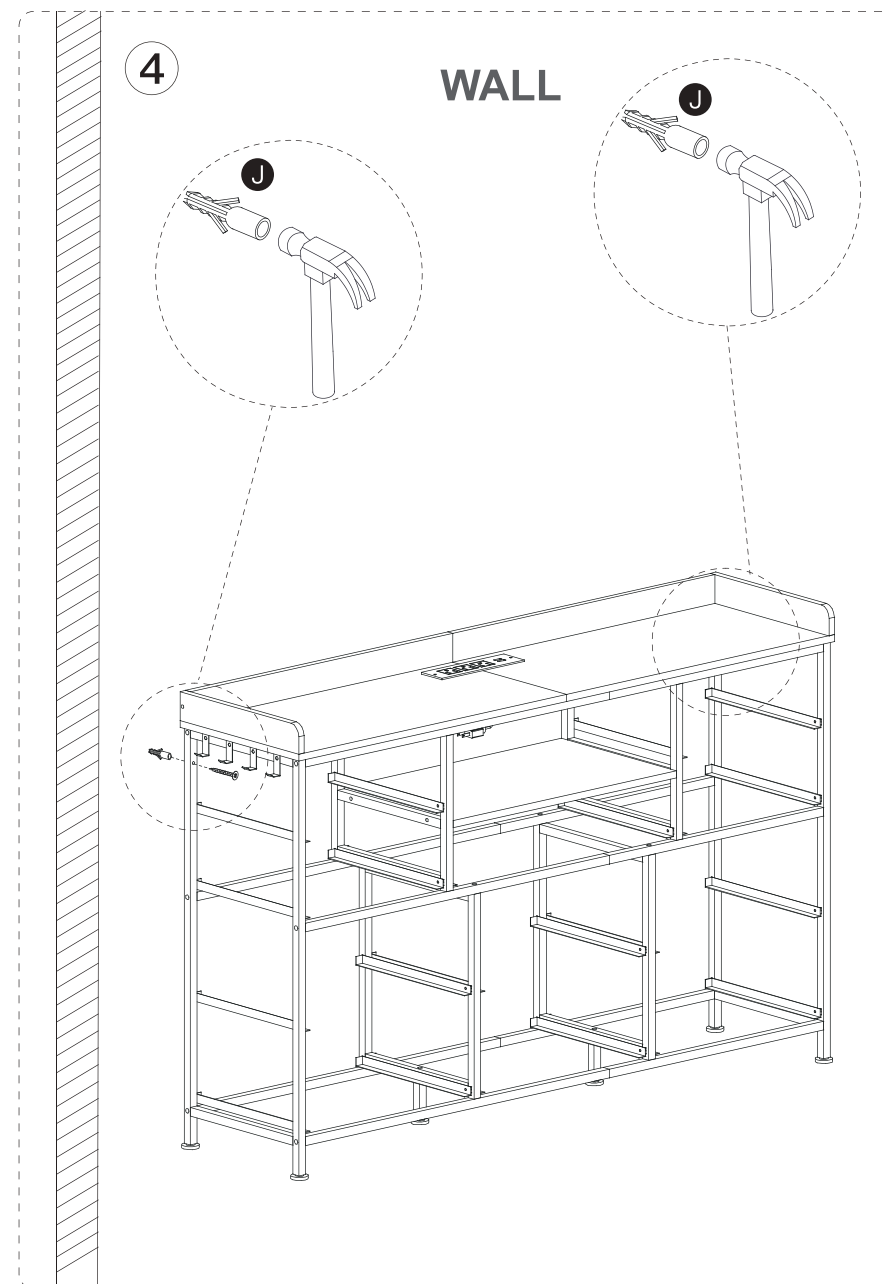
WALL

3

WALL

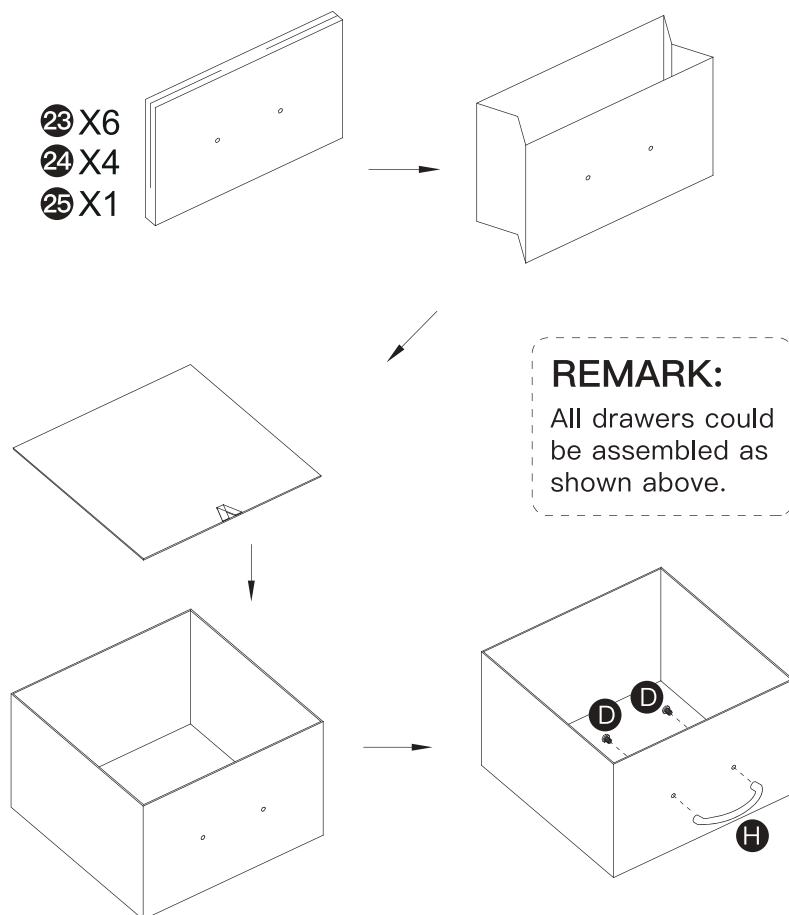
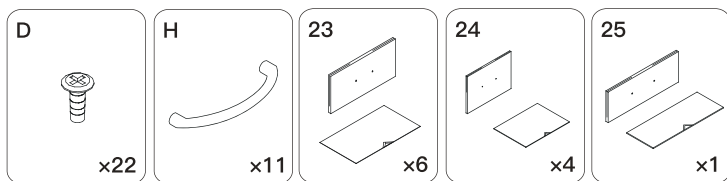
4

WALL



## Step 20

Open the drawers and put support board inside, then install part **H** on the drawer with part **D**.



## Step 21

Put all drawers into the frame. Tighten all screws.

