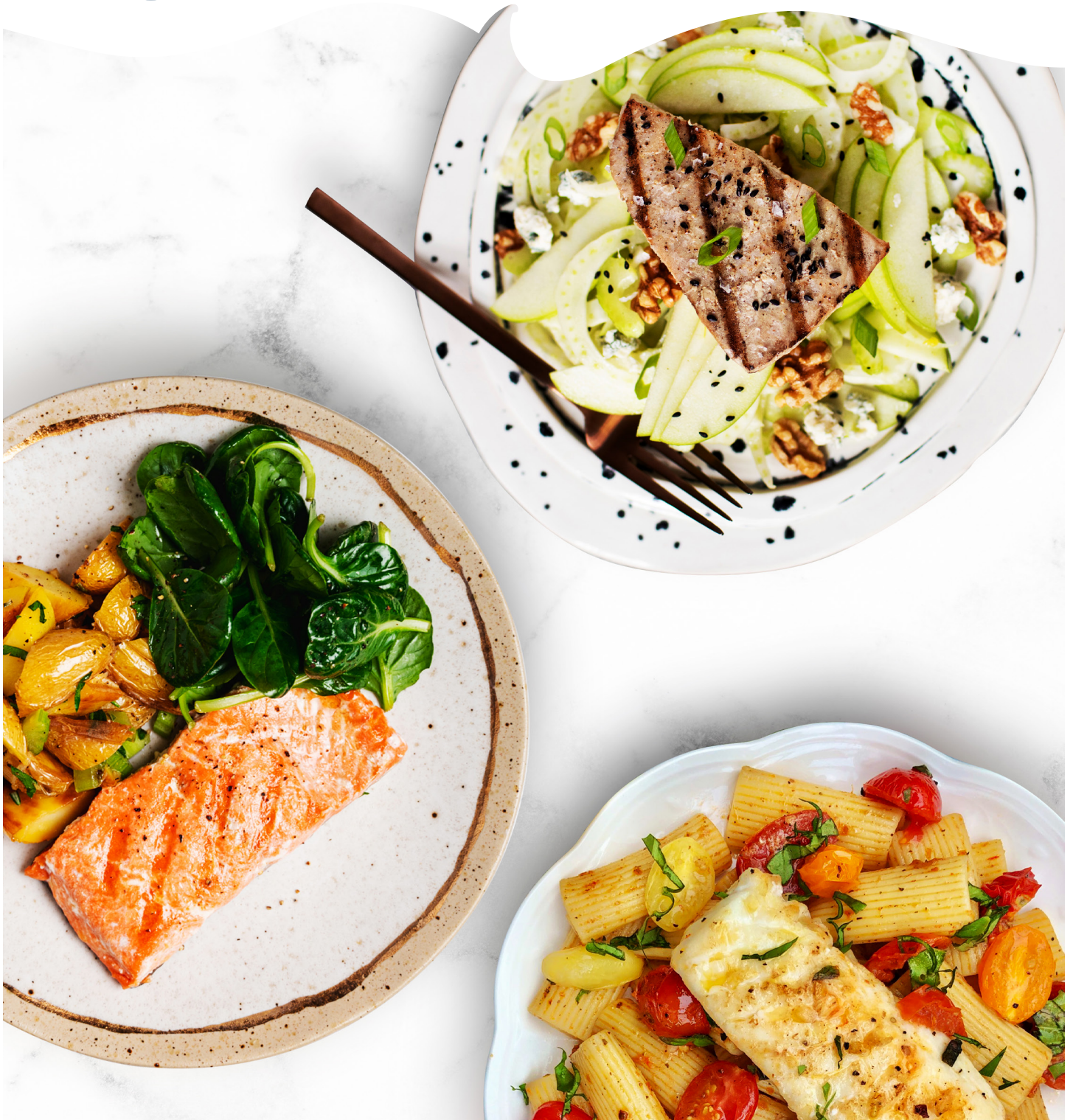




Frozen Portions

WILD-CAUGHT SEAFOOD



Fully traceable • Processed from fresh • No added preservatives or chemicals



100% traceable wild-caught seafood from our trusted network of fishermen.

HANDLINE CAUGHT MALDIVES YELLOWFIN TUNA



INGREDIENTS:
Wild-caught Yellowfin Tuna.



Nutrition Facts	
5 Servings Per Container	
Serving size	4oz (113g)
Amount per serving	120
Calories	
% Daily Value*	
Total Fat 0.5g	1%
Saturated Fat 0g	0%
Trans Fat 0g	
Cholesterol 45mg	15%
Sodium 50mg	2%
Total Carbohydrate 0g	0%
Dietary Fiber 0g	0%
Total Sugars 0g	
Includes 0g Added Sugars	0%
Protein 27g	
Vitamin D 2mcg	10%
Calcium 5mg	0%
Potassium 500mg	10%
Iron 0.87mg	4%

* The % Daily Value (DV) tells you how much a nutrient in a serving of food contributes to a daily diet. 2,000 calories a day is used for general nutrition advice.

MSC ICELANDIC ATLANTIC COD



INGREDIENTS:
Wild-caught Atlantic Cod.



Nutrition Facts	
5 Servings Per Container	
Serving size	4oz (113g)
Amount per serving	90
Calories	
% Daily Value*	
Total Fat 1g	2%
Saturated Fat 0g	0%
Trans Fat 0g	
Cholesterol 50mg	17%
Sodium 60mg	3%
Total Carbohydrate 0g	0%
Dietary Fiber 0g	0%
Total Sugars 0g	
Includes 0g Added Sugars	0%
Protein 20g	
Vitamin D 1mcg	5%
Calcium 20mg	1%
Iron 1mg	2%
Potassium 470mg	10%

* The % Daily Value (DV) tells you how much a nutrient in a serving of food contributes to a daily diet. 2,000 calories a day is used for general nutrition advice.

MSC ALASKAN SOCKEYE SALMON



INGREDIENTS:
Wild-caught Sockeye Salmon.



Nutrition Facts	
4 Servings Per Container	
Serving size	4oz (113g)
Amount per serving	150
Calories	
% Daily Value*	
Total Fat 5g	7%
Saturated Fat 1g	
Trans Fat 0g	
Cholesterol 60mg	2%
Sodium 90mg	4%
Total Carbohydrate 0g	0%
Dietary Fiber 0g	0%
Total Sugars 0g	
Includes 0g Added Sugars	0%
Protein 25g	
Vitamin D 15mcg	75%
Calcium 10mg	0%
Iron 0.49mg	2%
Potassium 416mg	8%

* The % Daily Value (DV) tells you how much a nutrient in a serving of food contributes to a daily diet. 2,000 calories a day is used for general nutrition advice.

FOR SALES & INFORMATION:

sales@bluecirclefoods.com
www.bluecirclefoods.com

SPECS

	Unit Dimensions (w x d x h)	Case Dimensions (w x d x h)	Case Pack	Case Weight	Pallet (ti x hi & cases)
YELLOWFIN TUNA	6.3" x 2.5" x 10.6"	18.9" x 15.7" x 14"	16	20 lbs	6 x 8, 40 cases
SOCKEYE SALMON	6.3" x 2.5" x 10.6"	22.75" x 15.25" x 5"	16	16 lbs	5 x 8, 40 cases
ATLANTIC COD	6.3" x 2.5" x 10.6"	15.5" x 12.5" x 7.4"	20	25 lbs	5 x 14, 40 cases