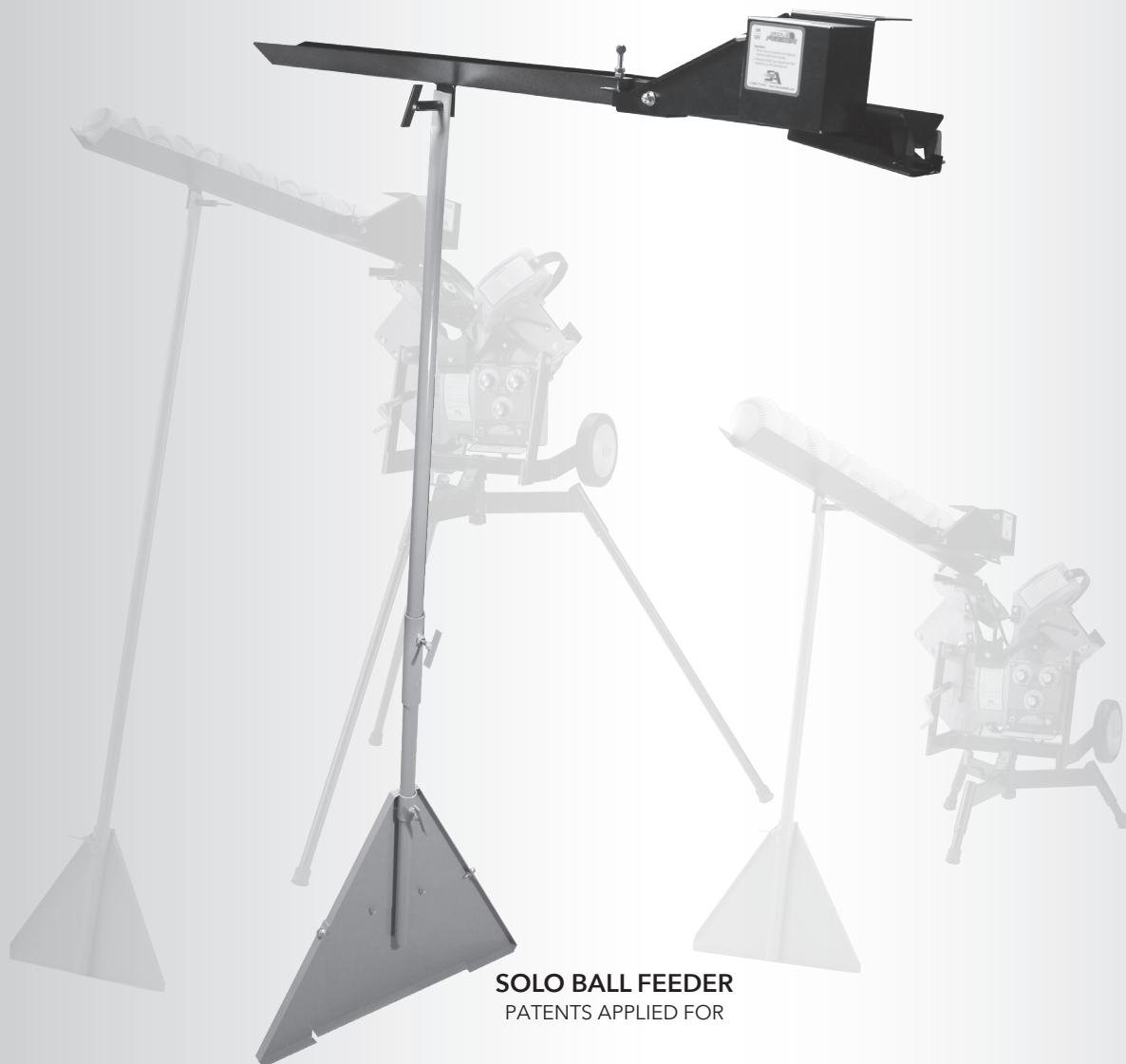




SOLO BALL FEEDER FOR BASEBALL AND SOFTBALL



SOLO BALL FEEDER  
PATENTS APPLIED FOR

## INSTRUCTION MANUAL

OPERATION · SETUP · USE & CARE · SERVICE



SPORTS ATTACK LLC. | 800.717.4251 | [www.sportsattack.com](http://www.sportsattack.com)

## WARRANTY STATEMENT

What is most important to Sports Attack is that your machine meets your expectations and represents our high standards of quality and performance. No matter the circumstances, if this is not the case, we encourage you to call our customer service department at 800.717.4251.

### Warranty:

#### Residential & Institutional

We stand behind the material and workmanship of our machines as well as all wear components (i.e., throwing wheels, controllers, and motors) for a period of two (2) years from the date of original purchase based on the serial number and date codes on the unit.

#### Commercial

We stand behind the material and workmanship of our machines as well as all wear components (i.e., throwing wheels, controllers, and motors) for a period of one (1) year from the date of original purchase based on the serial number and date codes on the unit.

#### Requirements of the Warranty

- Warranty wear components such as motors, controllers and wheels may now require a picture or live video when submitting your request.
- The serial number that represents the date of original shipment must be legible on the Product, it cannot be removed or altered in any way.
- All date codes on unit components must be legible, not removed or altered in any way.
- If warranty components have previously been provided by Sports Attack for the unit, video evidence of their use on the machine must be provided when submitting your request.

#### Not Included in this Warranty:

- Normal wear and tear;
- Cosmetic damage (i.e., minor scratches, surface deformations, or discolorations) including natural fading of colors;
- Damage caused by misuse, abuse, accident or negligence including prolonged exposure to inclement weather;
- Damage caused by fire, flood or any other Act of God;
- Unauthorized modification or alteration of a machine including the use of non-authorized, after market components; and
- Any damage or failure arising after the warranty period.

### The Warranty Process

If you encounter any issues during the warranty period, Sports Attack will quickly get your machine back in working order. To submit a warranty request, you must call our customer service department at 800.717.4251. If the warranty repair involves a replacement part, we will make sure you get both the part and easy instructions for replacement at no cost to you.

### Returns

Sports Attack manufactures the highest quality sports training equipment in the world. If for any reason you are not satisfied, a machine can be returned within 30 days of receipt, for any reason, for a full refund less a 15% restocking fee. Cost of shipping the unit back to Sports Attack will also be the responsibility of the purchaser. Please note that the refund amount may be reduced by any non-cosmetic damage to the machine.

**Please call customer service department at 800.717.4251 for returns.**

## SHIPPING DAMAGE CLAIMS PROCEDURE

**NOTE:** For your protection, please note that equipment in this shipment was carefully inspected and packaged by skilled personnel before leaving the factory.

Upon acceptance of this shipment, the transportation company assumes full responsibility for its safe delivery.

#### IF SHIPMENT ARRIVES DAMAGED:

1. **VISIBLE LOSS OR DAMAGE:** Be certain that any visible loss or damage is noted on the freight bill or express receipt, and that the note of loss or damage is signed by the delivery person.
- (cont. on page 1)

**To register the Warranty, please return the Warranty Registration Card to:**

Sports Attack LLC.  
P.O. Box 1529  
Verdi, NV 89439

**For repairs and service after the Warranty period, please call:**

Sports Attack  
Customer Service Dept.  
Ph 800.717.4251  
Fx (775) 345.2883

## RETURNS

**To return an item, please contact our Customer Service Department at 800.717.4251.**

A 15% restocking fee will be charged for any items accepted for return. It is the customer's responsibility to handle the repacking and shipment (as well as all associated fees) back to Sports Attack.

No returns will be accepted after 30 days of receiving this product.

2. FILE CLAIM FOR DAMAGE IMMEDIATELY: Regardless of the extent of the damage.
3. CONCEALED LOSS OR DAMAGE: If damage is unnoticed until the merchandise is unpacked, notify the transportation company or carrier immediately, and file "CONCEALED DAMAGE" claim with them. This must be done within fifteen (15) days from the date the delivery was made to you. Be sure to retain the container for inspection.

Sports Attack LLC. cannot assume liability for damage or loss incurred in transit. We will, however, at your request, supply you with the necessary documents to support your claim.

## TABLE OF CONTENTS

Warranty Statement .....	i
Safety Instructions .....	2
SOLO FEEDER OPERATION	
Component View & Packing List .....	3
Assembly for Baseball .....	4
Assembly for Softball .....	5
Operation .....	6-7
PARTS	
Parts List .....	8
Exploded View .....	9

## INTRODUCTION

Thank you for purchasing this Sports Attack LLC. equipment. Proper assembly, careful operation and consistent maintenance of this equipment will ensure that it gives you the very best performance and a long, economical service life. This manual contains the information needed to properly set up the Solo Feeder, and to use, care for and maintain the Solo Feeder in a manner which will ensure its optimum performance.

If you have any questions regarding operation, maintenance or service, please call our Customer Service Department at 800-717-4251 or 775-345-2882.

## RECEIVING THE PRODUCT

Please check the contents of your boxes to ensure you have received all parts for the feeder. If anything is missing or damaged, call Sports Attack Customer Service at 800-717-4251. If the product or package has been damaged in shipping, note on shipping tag, save all evidence of damage along with related documents and contact the shipper immediately.

## SAFETY INSTRUCTIONS

### ELECTRICAL SAFETY

Use a 115 volt single phase 3-wire (2 wire with ground) grounded power source.

Up to 200 ft. from power source, use a minimum #14/3 grounded 3-wire 15 amp minimum rating extension cord. Over 200 ft. from power source, consult a licensed electrician for required power cord size.

### OPERATING SAFETY

**CAUTION:** Carefully check Solo Feeder for completeness and condition before connecting to electrical power. Use protective screen in front of the pitching machine. Test pitches before allowing a hitter to enter the batter's box.

### WARNING

#### PERSONAL INJURY HAZARD

Carefully read all instructions in this manual, and all labels and warnings on the Solo Feeder before using this machine.

Use machine only under adult supervision. Failure to operate Solo Feeder as described in this manual can result in severe personal injury or death.

#### ELECTRICAL SHOCK HAZARD

Solo Feeder must be connected to a properly grounded electrical receptacle.

Do not operate on wet ground.

This equipment is intended for noncommercial use only.

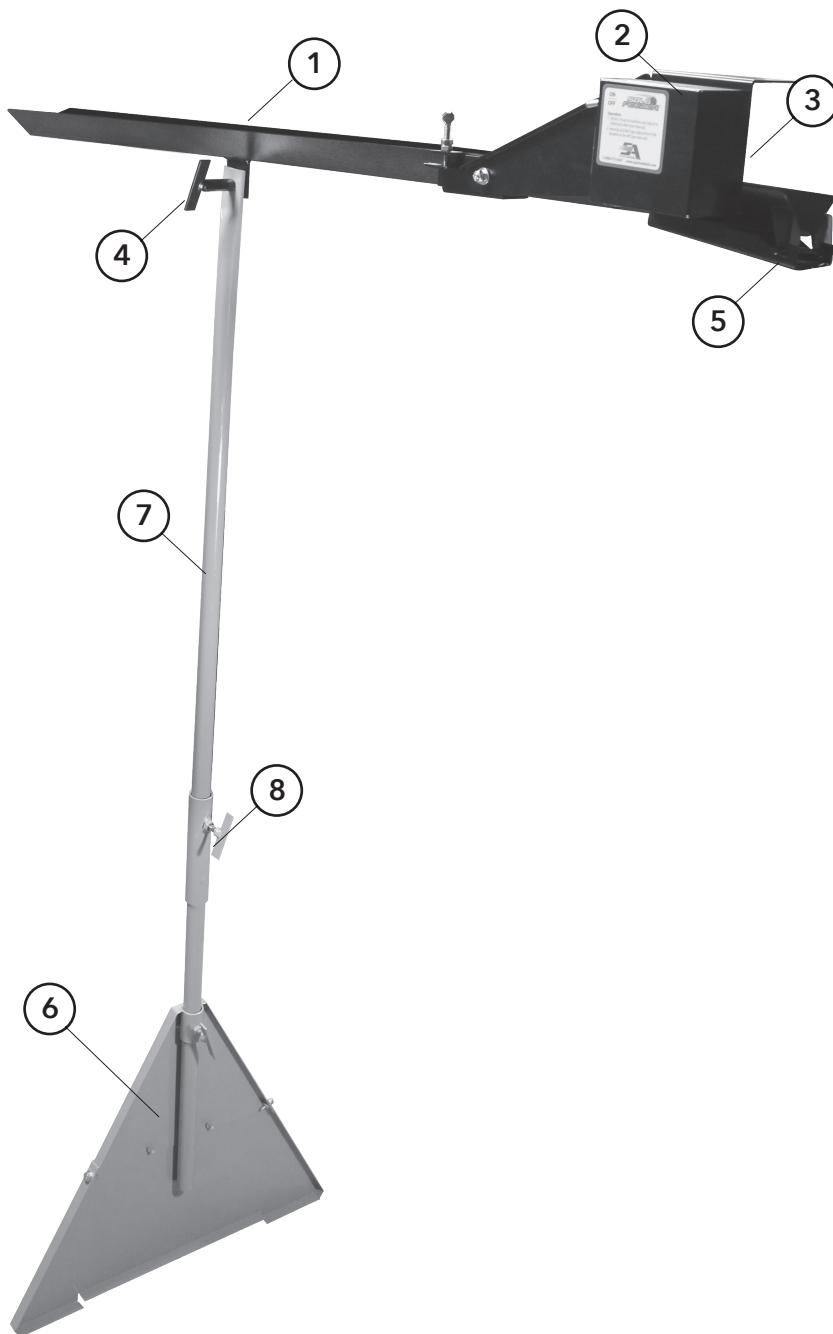
### CAUTION

#### PERSONAL INJURY HAZARD

Keep hands away from throwing wheels anytime the machine is connected to a power source.

DO NOT plug in or energize Solo Feeder until all Assembly Instructions and Operation Instructions are read and followed.

## COMPONENT VIEW



## PACKING LIST

### STANDARD (with all feeders)

1. Ball Chute
2. Motor
3. Motor Roller
4. Handle
5. Hack Attack Attachment
6. Stand Top and Bottom

### SOFTBALL SOLO FEEDERS

7. Softball Leg

### BASEBALL SOLO FEEDERS

7. Softball Leg
8. Baseball Leg Extension



## ASSEMBLY FOR BASEBALL HACK ATTACK AND JUNIOR HACK ATTACK

### STEP ONE:

Attach Softball leg onto ball chute as Show at "A" Fig. 1.

### STEP TWO:

For a Solo Feeder that is going to be used with a BASEBALL Hack Attack, Junior Hack Attack or Track Attack, attach baseball extension leg (show at "B" Fig. 1).

### STEP THREE:

Attach to stand as show at "C" Fig. 1.

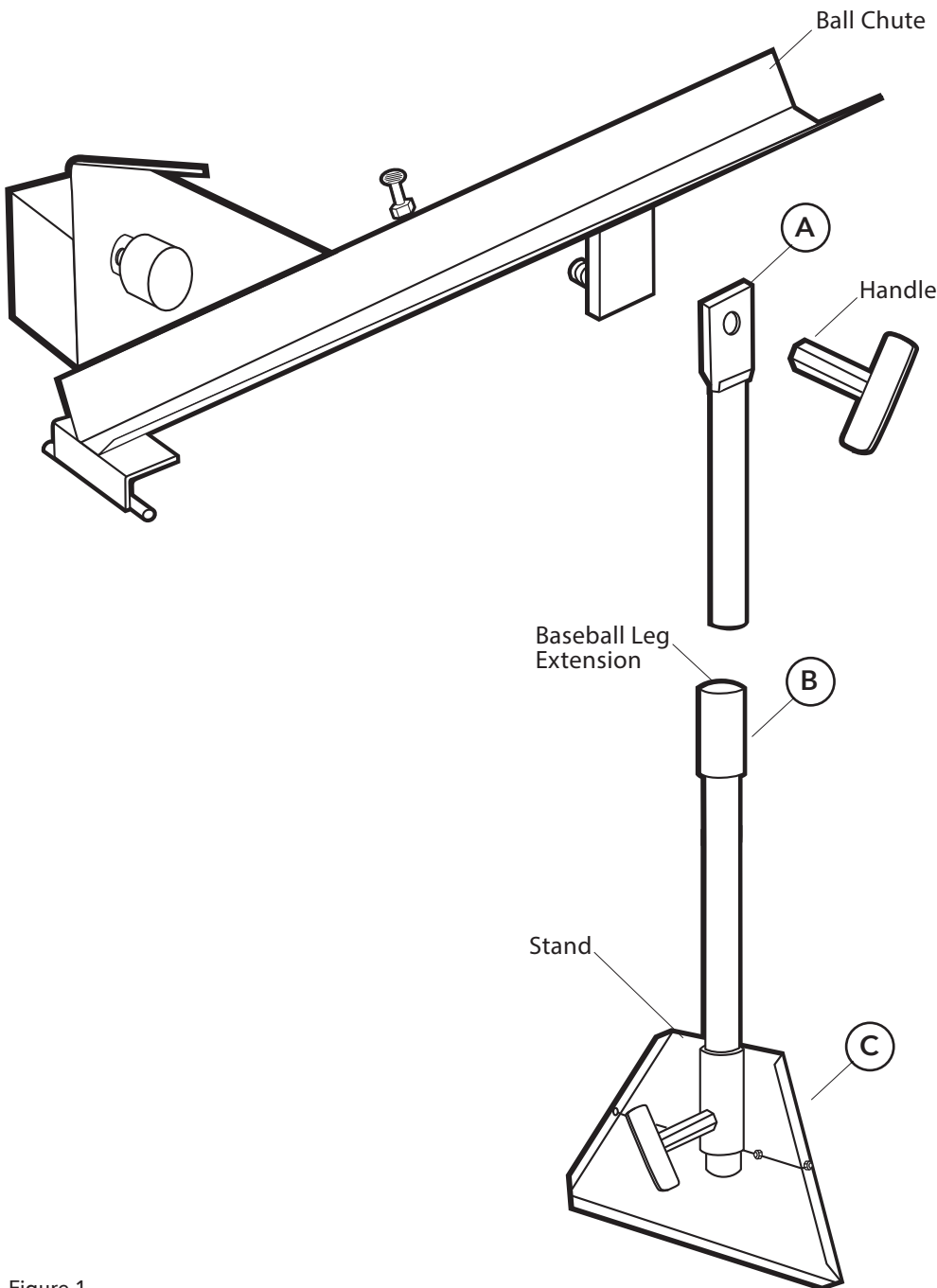


Figure 1

**NOTE:** The Solo Feeder interval control also comes assembled for use with the Track Attack Eye Ball (smaller ball) Pitching Machine. See page 7 for interval adjustment.

## ASSEMBLY FOR SOFTBALL HACK ATTACK AND JUNIOR HACK ATTACK

### STEP ONE:

Attach Softball leg onto ball chute as Show at "A" Fig. 2.

### STEP TWO:

For a Solo Feeder that is going to be used with a SOFTBALL Hack Attack, Junior or Track Attack machine, attach stand as show at "C" Fig. 2 .

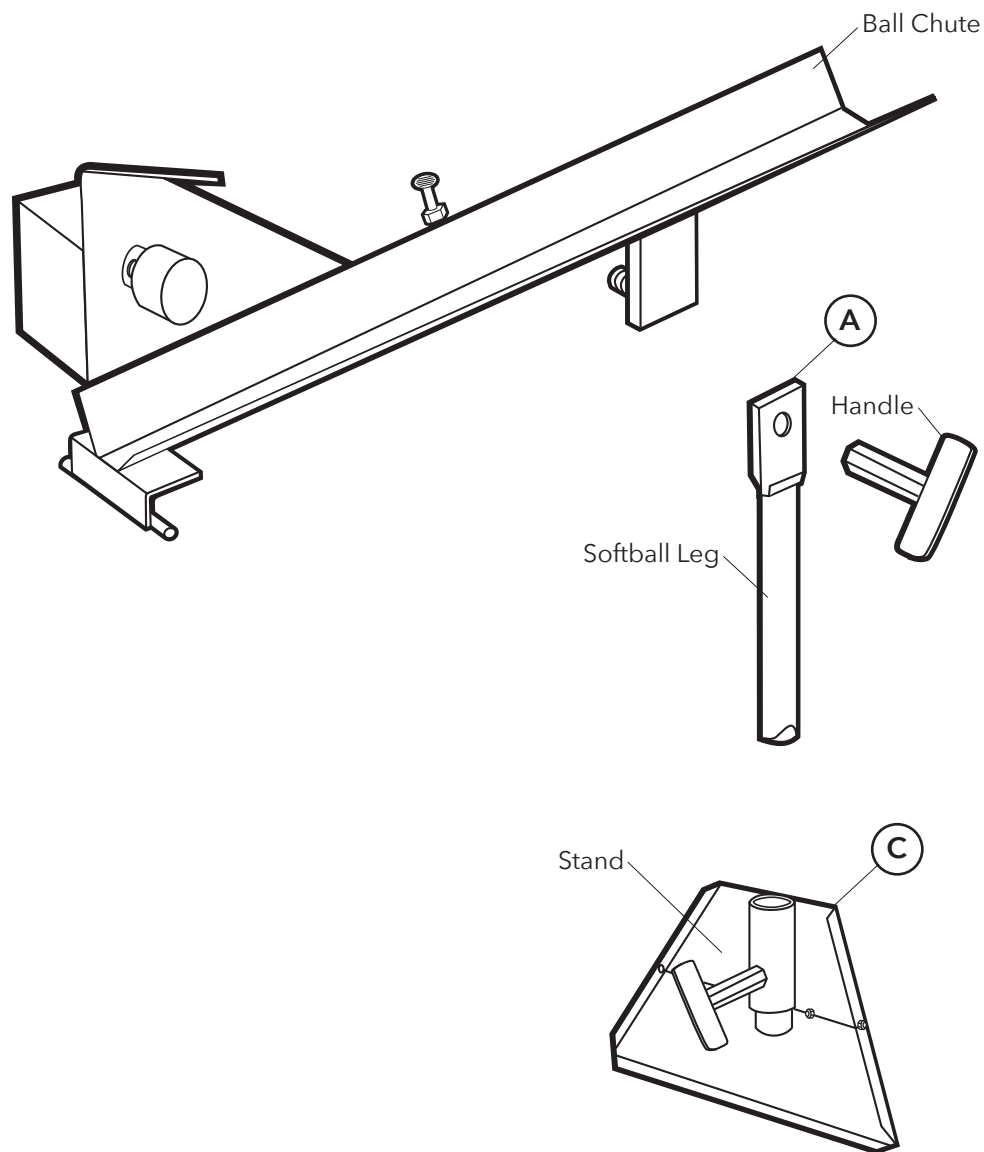


Figure 2

**NOTE:** The Solo Feeder interval control also comes assembled for use with the Track Attack Eye Ball (smaller ball) Pitching Machine. See page 7 for interval adjustment.

## FOR USE WITH HACK ATTACK & JUNIOR HACK ATTACK BASEBALL OR SOFTBALL

1. Assemble feed attachment piece to Hack Attack ball chute handle as shown.

Figure 3

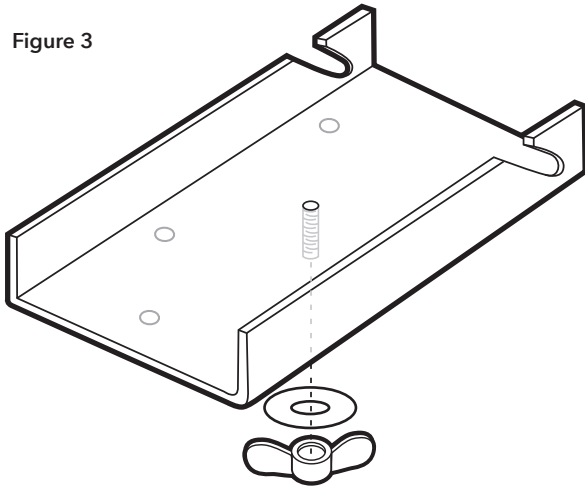
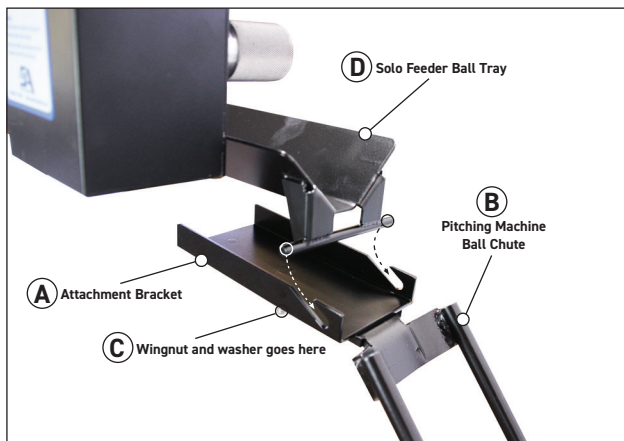


Figure 4



1. Install Attachment Bracket (A) to Ball Chute (B) using wingnut and washer provided (C).

2. Slide Solo Feeder Ball Tray (D) into grooves on Attachment Bracket (A) as shown with arrows. The weight of the feeder will keep it locked in place.

## FOR USE WITH THE I-HACK ATTACK BASEBALL OR SOFTBALL

1. Remove existing handle/ball chute on I-Hack before installing Solo Feeder ball chute. See Fig. 6-7.



Figure 5 Existing Ball Chute



Figure 6 I-Hack with Solo Feeder Ball Chute.

## OPERATION

### ADJUSTMENT FOR TIME BETWEEN PITCHES

To shorten the interval between pitches, loosen jam nut at "A" Fig. 7. Turn the adjustment bolt "B" Fig. 8, clockwise. After adjustment, tighten jam nut "A."

To lengthen the interval between pitches, loosen jam nut "A" Fig. 7. Turn the adjustment bolts "B" counterclockwise. After adjustment, tighten jam nut "A."

**NOTE:** The raising and lowering of the roller, as shown at "C," will change the feeding interval.

**NOTE:** Notice how changing the space at "C" Fig. 7 will change the distance that the roller must turn to release the ball. This changes the time between pitches.

### ON/OFF SWITCH

1. This switch starts and stops the feeder.
2. Have pitching machine turned on first with wheels turning fast enough so that first test ball from feeder does not jam.

### GENERAL OPERATION

1. Do not mix different types of balls.
2. The location of the roller controls the interval (or time between pitches) at which the ball is pitched.

**POSITION 1** - Allows the ball to pitch faster

**POSITION 2** - Allows the ball to pitch slower

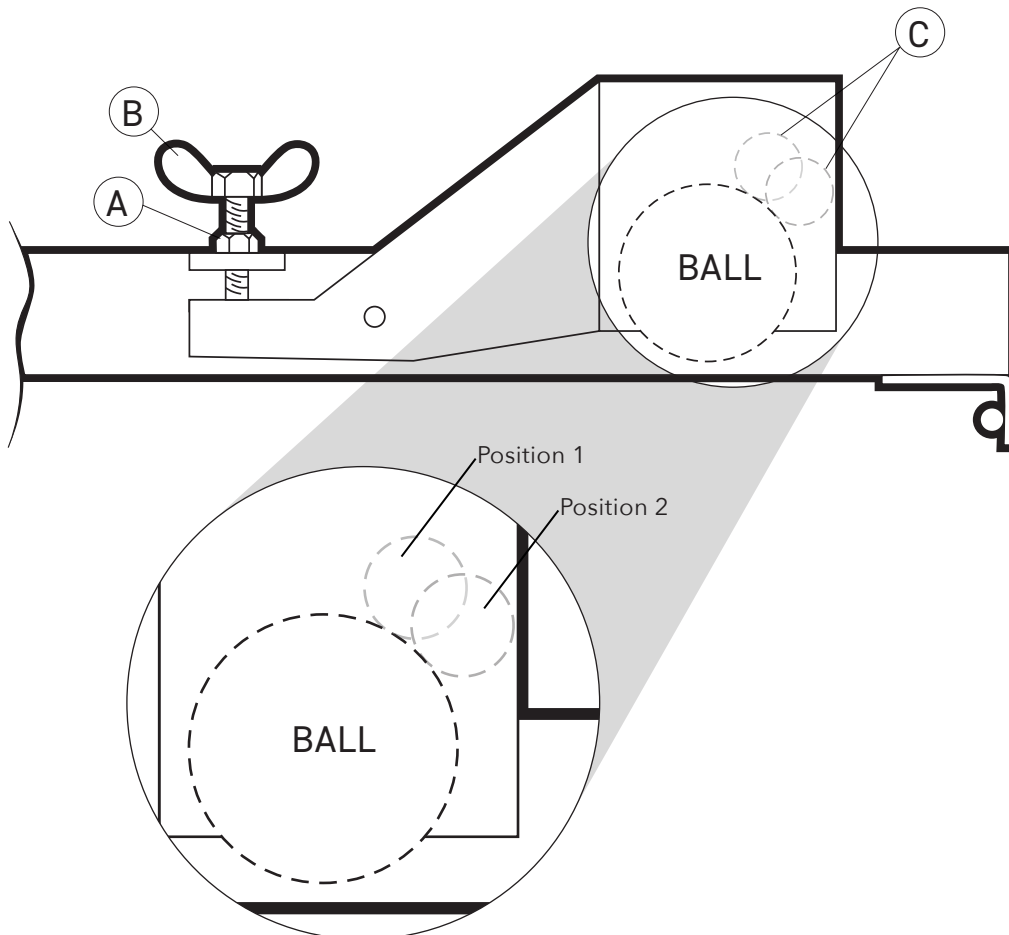


Figure 7

## WARNING PERSONAL INJURY HAZARD

Feeder should be used under adult supervision only! The on/off switch is located out of the reach of children.



## SOLO FEEDER PARTS LIST

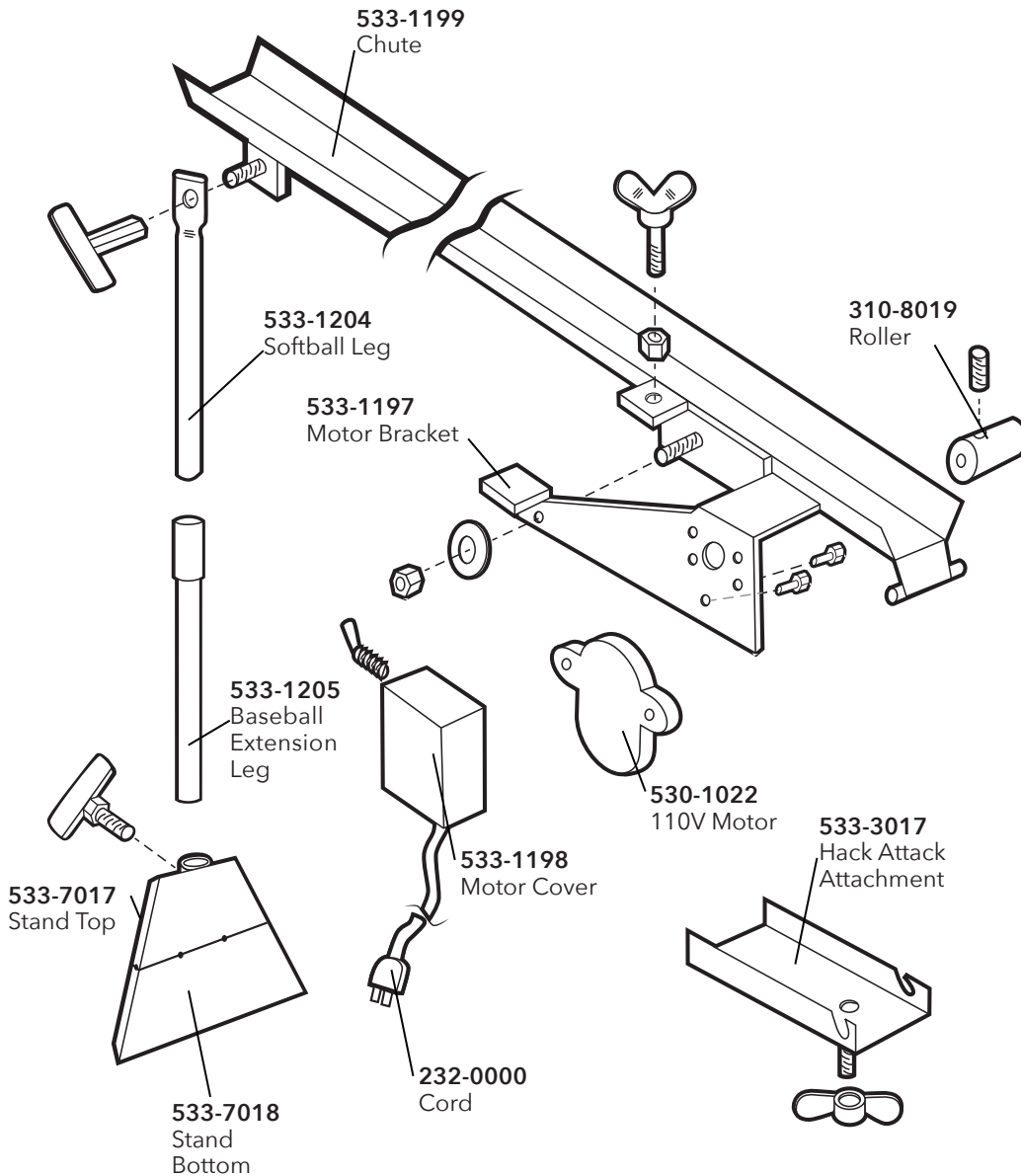
PART NO.	DESCRIPTION	QTY
533-7017	Stand Top	1
533-7018	Stand Bottom	1
533-1194	Handle for Chute	1
533-1193	Handle for Stand	1
533-1205	Baseball Extension Leg	1
533-1204	Softball Leg	1
533-1199	Chute	1
533-1197	Motor Bracket	1
310-8019	Roller	1
533-1198	Motor Cover	1
530-1022	110V Motor	1
530-1021	240V Motor	1
232-0000	Cord	1
223-0002	Switxh	1
533-3017	Hack Attack Attachment	1
533-1107	I-Hack Softball Attachment	1
533-1106	I-Hack Baseball Attachment	1
533-1538	Blast Attachment	1

**To order additional parts,  
please call:**

Sports Attack Customer  
Service Department  
Ph 800.717.4251  
Fx 775.345.2883

Solo Feeder Parts List

## EXPLODED VIEW



**To order additional parts,  
please call:**

Sports Attack Customer  
Service Department  
Ph 800-717-4251  
Fx 775-345-2883

Solo Feeder Exploded View