



GWI-MN / MN Roots

Elk River, MN

Sample 313-041023-079

D8 Flower - Bubba Kush

Batch/Lot # 0201284

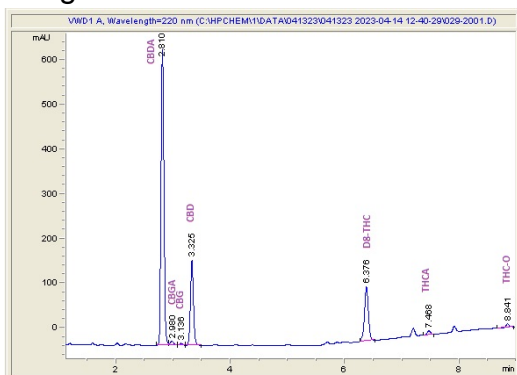
Sample Submitted: 04-10-2023; Report Date: 04-19-2023

D8 Flower - Bubba Kush

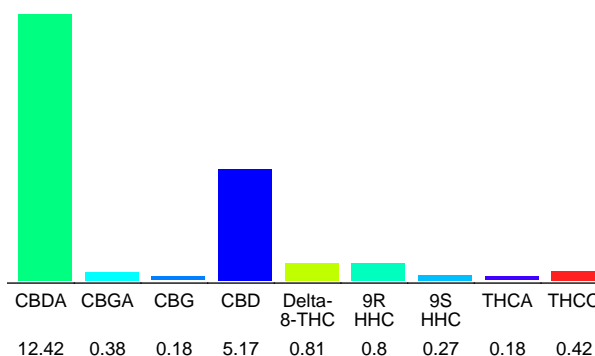
Plant Material: Flower

Batch/Lot # 0201284

Chromatogram



Cannabinoid Profile



Cannabinoid Profile by HPLC

0.00%
Delta-9-THC

5.17%
CBD

20.63%
Total Cannabinoids

Cannabinoid	% wt	mg/g
CBDA	12.42	124.2
CBGA	0.38	3.8
CBG	0.18	1.8
CBD	5.17	51.7
Delta-8-THC	0.81	8.1
9R HHC	0.8	8.0
9S HHC	0.27	2.7
THCA	0.18	1.8
THCO	0.42	4.2
Total Cannabinoids	20.63	206.3
Calculated Delta-9-THC Yield	0.16	1.58
Calculated CBD Yield	16.06	160.62
Calculated Maximum Delta-9-THC Yield = Delta-9-THC + 0.877 * THCA		
Calculated Maximum CBD Yield = CBD + 0.877 * CBDA		

Marin Analytics, LLC
250 Bel Marin Keys Blvd, Suite D4
Novato, CA 94949
415-936-6477 / sarabiancalana1@gmail.com

Sara Biancalana
Sara Biancalana
Chief Scientist

This sample has been tested by Marin Analytics, LLC using valid testing methodologies and a quality system. Values reported relate only to the sample tested. Marin Analytics, LLC makes no claims as to the efficacy, safety or other risks associated with any detected or non-detected levels of any compounds reported herein. This Certificate shall not be reproduced except in full, without the written approval of Marin Analytics, LLC. Copyright 2022 Marin Analytics, LLC All Rights Reserved.