



**GWI-MN / MN Roots**

Elk River, MN

**Sample 313-041023-082**

**D8 Crumble**

Batch/Lot # 03162682

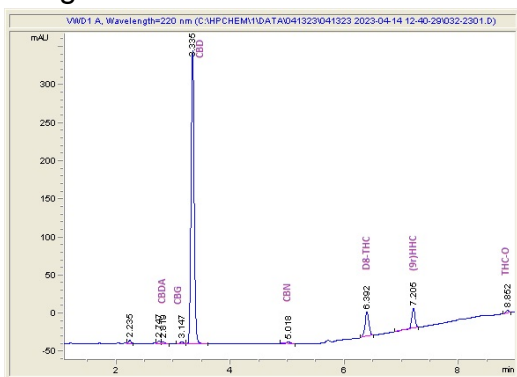
Sample Submitted: 04-10-2023; Report Date: 04-19-2023

**D8 Crumble**

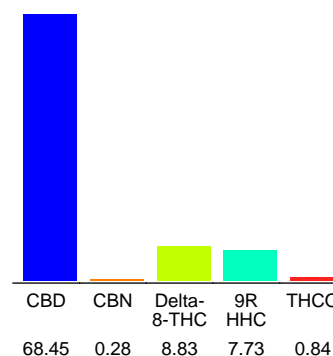
Extract: Other Separation

**Batch/Lot # 03162682**

### Chromatogram



### Cannabinoid Profile



### Cannabinoid Profile by HPLC

**0.00%**  
Delta-9-THC

**68.45%**  
CBD

**86.13%**  
Total Cannabinoids

Cannabinoid	% wt	mg/g
CBD	68.45	684.5
CBN	0.28	2.8
Delta-8-THC	8.83	88.3
9R HHC	7.73	77.3
THCO	0.84	8.4
<b>Total Cannabinoids</b>	<b>86.13</b>	<b>861.3</b>
<b>Calculated Delta-9-THC Yield</b>	<b>0.00</b>	<b>0.00</b>
<b>Calculated CBD Yield</b>	<b>68.45</b>	<b>684.50</b>

Calculated Maximum Delta-9-THC Yield = Delta-9-THC + 0.877 \* THCA  
 Calculated Maximum CBD Yield = CBD + 0.877 \* CBDA

**Marin Analytics, LLC**  
 250 Bel Marin Keys Blvd, Suite D4  
 Novato, CA 94949  
 415-936-6477 / sarabiancalana1@gmail.com

*Sara Biancalana*  
**Sara Biancalana**  
 Chief Scientist

This sample has been tested by Marin Analytics, LLC using valid testing methodologies and a quality system. Values reported relate only to the sample tested. Marin Analytics, LLC makes no claims as to the efficacy, safety or other risks associated with any detected or non-detected levels of any compounds reported herein. This Certificate shall not be reproduced except in full, without the written approval of Marin Analytics, LLC. Copyright 2022 Marin Analytics, LLC All Rights Reserved.