

low tide

by suzanne middlebrooks



finished dimensions

17.5" wide x 80" long, after finishing & excluding fringe.

yarn

Ritual Dyes Undine

(60% Organic Cotton, 40% Linen; 382 yds / 100 g)

1 skein each of 3 colors, shown in:

Prarie Flax (Color A)

Lambs Ear (Color B)

Natural (Color C)

equipment

rigid heddle loom 20" or wider

10 dent heddle

3 stick shuttles

sett

10 epi x 10 ppi

notions

tapestry needle for hemstitching, waste yarn, crochet hook for edge finishing

directions

Warping

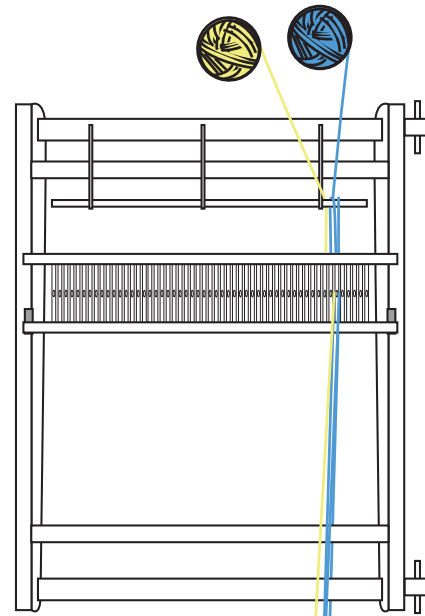
Direct warp your loom 100" long as follows:

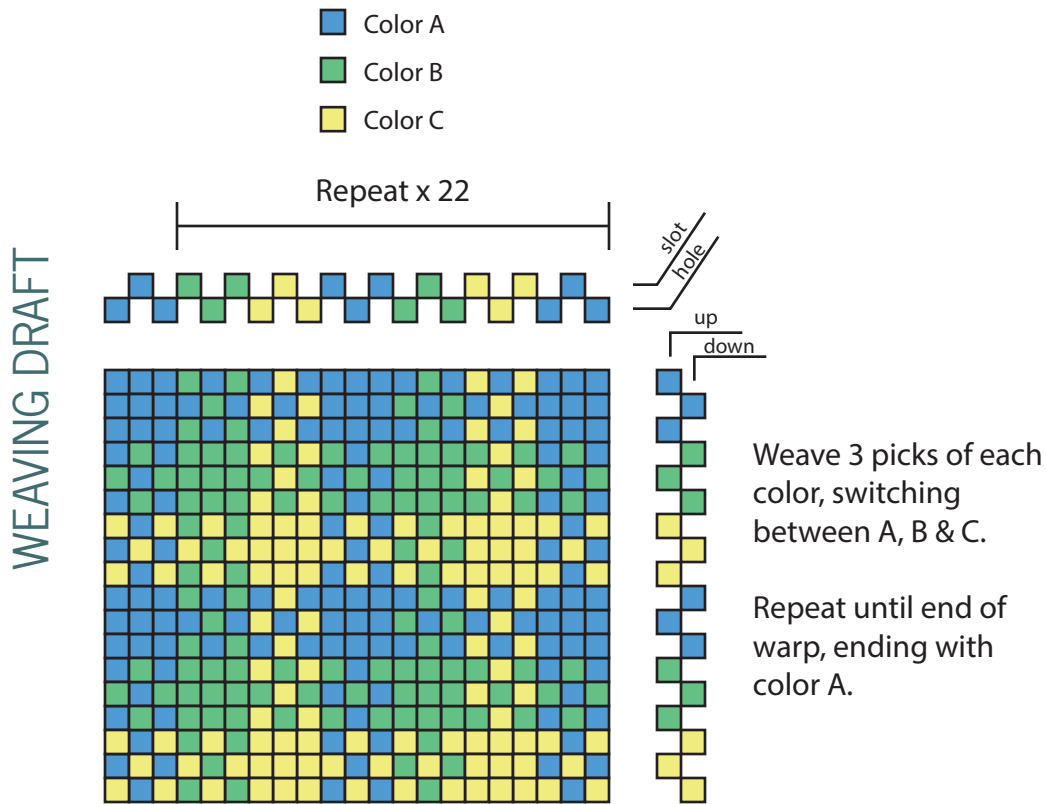
Pull through one loop of color A through a slot, pull through a second loop of color A but cut it at the warping peg, dropping the second half of this loop off the back of the loom (wind back onto your ball of yarn). Pull a single end of color B through the same slot as the remaining single strand of color A and knot these two strands together at the warping peg.

Continue in this way, switching between colors A, B, & C as you work.

You will have 3 ends of each color, with a total of 22 sets of 9 ends (3 in each color). Warp one additional set of 3 ends of color A to finish.

Note: see the weaving draft on the next page for a visual representation of the warping pattern.





Weaving

Notes: you will be alternating between 3 stick shuttles. you can avoid cutting and rejoining the yarns by carrying the unused yarn up the sides of the work. With the long strands of unused colors left on your selvages you may want to neaten them up using the optional crochet edging.

Weave 1-2" of waste yarn before continuing.

Wind one shuttle each with colors A, B & C.

Beginning with color A, work in plain weave as follows:

Weave 3 picks of color A
Weave 3 picks of color B
Weave 3 picks of color C

Repeat this sequence until you reach the end of the warp, approximately 80", ending with 3 picks of color A.

Weave 1-2" of waste yarn and cut fabric from the loom.

hemstitching

Optional: if desired you can work your hemstitching on the loom instead.

Using a strand of color A, work a single hemstitch along both edges of the weaving, working over 4 ends and 3 picks. Tuck the beginning and end of this strand in with the fringe.

finishing

Handwash finished piece and blot with a towel. Once just damp, run through the dryer on low. Press with an iron and trim fringe even.

optional crochet edging:

To work an applied crochet edge along your selvage, use the color(s) of your choice and work a row of single crochet 2 ends in, inserting your hook to pick up a stitch every 2-3 picks.

Check out our youtube channel for a video tutorial on how to apply this edging!

<https://youtu.be/LMH3QZYL4dE>