

Installation shall be made entirely at your own risk. DevSport is **not** responsible for any and all damages caused by the improper installation of any product. Professional installation is **recommended**.

Note: This is a general outline for installation. Actual application will vary slightly.



Hardware

Hex Bolts
Washers
Lock Nuts

Tools Required

13mm Wrench
13mm Socket
3/8" Drill Bit
Power Drill

OEM/Aftermarket Front Lip - Refer to **Page 5** Before Installing.
Support Rod Installation - Page 6

- 1:** Front Splitters can generate forces of up to 100 pounds or more across the Splitters surface. Vehicle speeds and these forces must be considered before any Splitter installation.
- 2:** With the forces exerted on the Splitter, improperly installation may cause it to un-mount, and pull chunks or even tear the entire front bumper away from the vehicle.
- 3:** Splitter Support Rods are optional, but highly recommended. Splitter Support Rods will aid in adding strength and minimize overall flex.
- 4:** Using a thread locker is highly recommended. Due to vibrations hardware can loosen over time. This is why we provide nylon lock nuts and recommend thread lock.

STEP 1



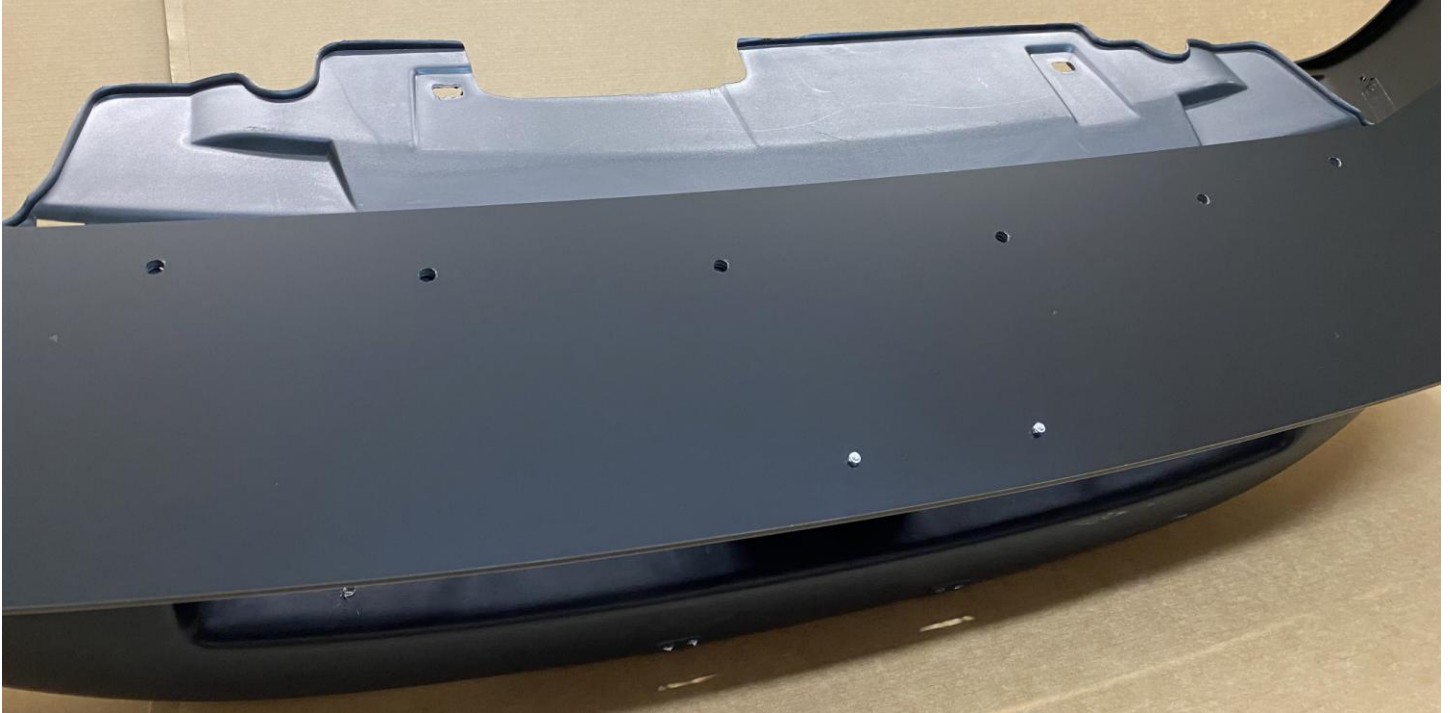
All Splitters and badges will come with a protect mask on. We recommend keeping this on while you mock up the Splitter. Once ready for final installation, peel the mask off at an angle just like a sticker.

STEP 2



Remove the front bumper and align the Splitter to the bumper. Clamp down each side.

STEP 3



Mark the holes position on the bumper through the Splitter's pre-drilled holes.

STEP 4



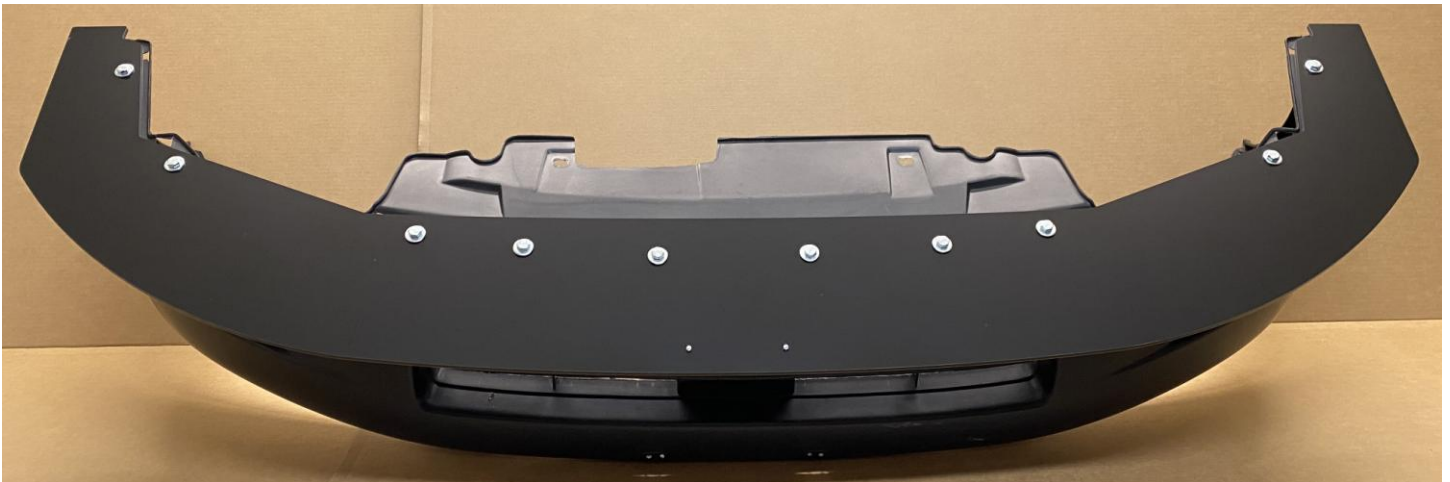
Drill bolt holes into the bumper using a 3/8" drill bit.

STEP 5



Once all holes are drilled into the bumper, re-align the Splitter to the bumper. Insert the bolts through each hole and tighten the nuts. (Thread lock highly recommended)

STEP 6



Once all hardware is installed, double check and retighten all nuts.

INSTALLING A SPLITTER WITH A FRONT LIP



Those with a front lip, there may be a gap between the Splitter and bumper.
The best way to secure the Splitter is shown above.

- Customer will need longer bolts depending on the gap, 2 nuts and 2 washers per bolt.
- Bolts and Nuts used are 8mm-1.25mm.
- Customer will reuse the washers and nylon lock nuts provided.
- Lock nuts provided are used as the top nut against the bumper.

SUPPORT ROD INSTALLATION

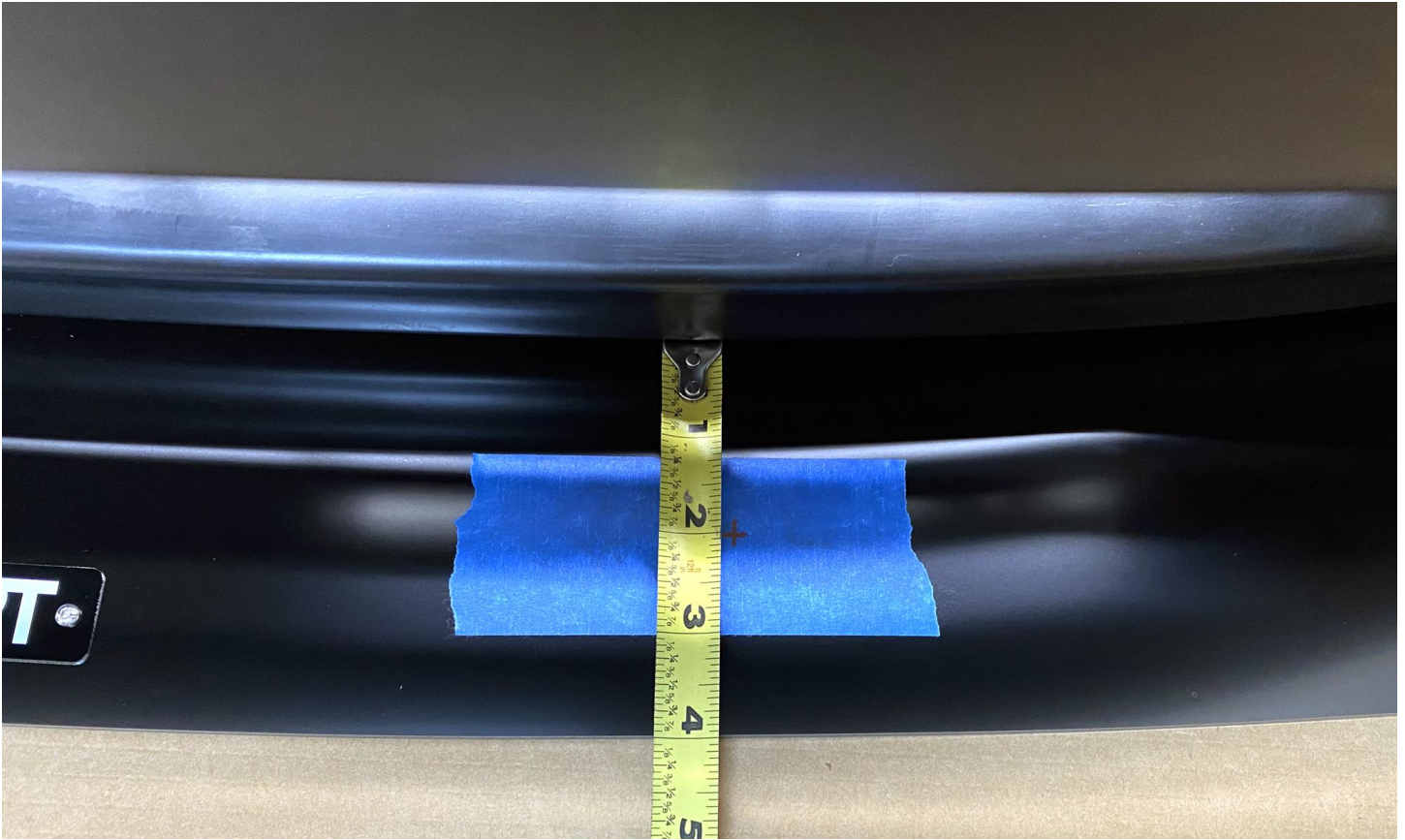
When adjusting Support Rod length, each side has a maximum extension length of $\frac{3}{4}$ ". Adjust each side to equal length. This keeps strength within the barrel and prevents failure.

STEP 1



When spacing the Support Rods, the standard distance is 5-7" from the badge on each side.

STEP 2



- Support Rods should be installed a tad more than the middle point of the Splitters extension.
- In this example, the Splitter extends about 4". Thus the Support Rod should be installed a tad more than 2" from the bumper/lip.
- Support Rod must be installed at least 1" from the outer edge of the Splitter.
- Following these steps will provide proper strength and support for the Splitter.

STEP 3



Install Support Rods in a vertical position. Tighten all nuts once Support Rod in finally position.

- Use thread locker on all treads -

Note: Installing the Rods on the side of the grill will not properly strengthen and support the Splitter.